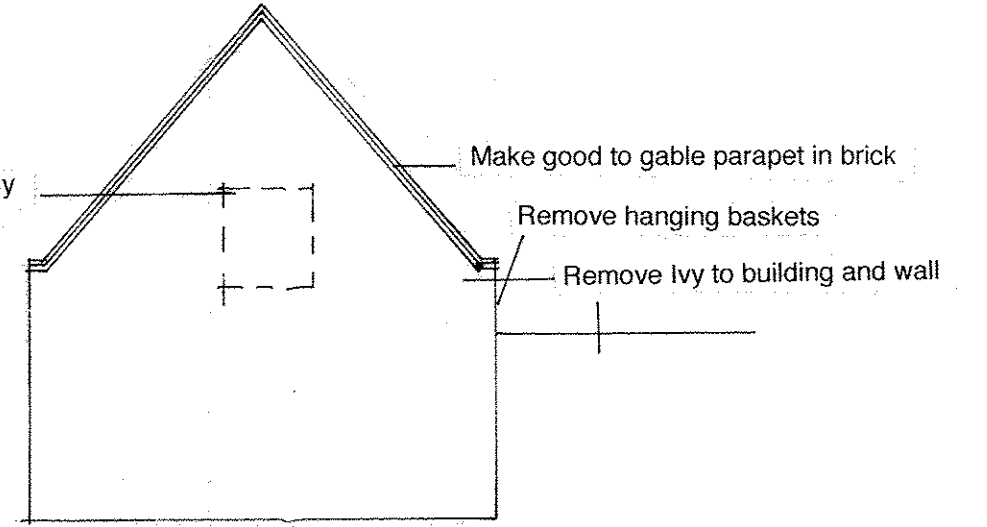
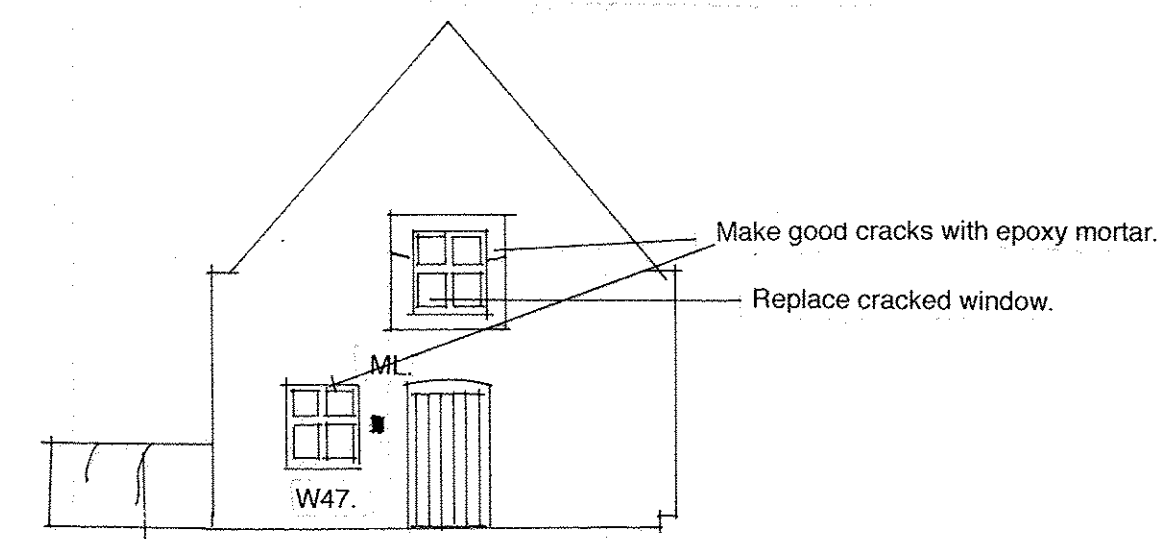


MAIN BUILDING WEST ELEVATION.

Kos surface mounted downlight mounted in porch
 Extend underground drain and rebuild the existing soil waste internally
 Remove existing soil vent pipework
 Waste downpipes disconnected and relocated internally
 Make good to flint and brickwork as necessary

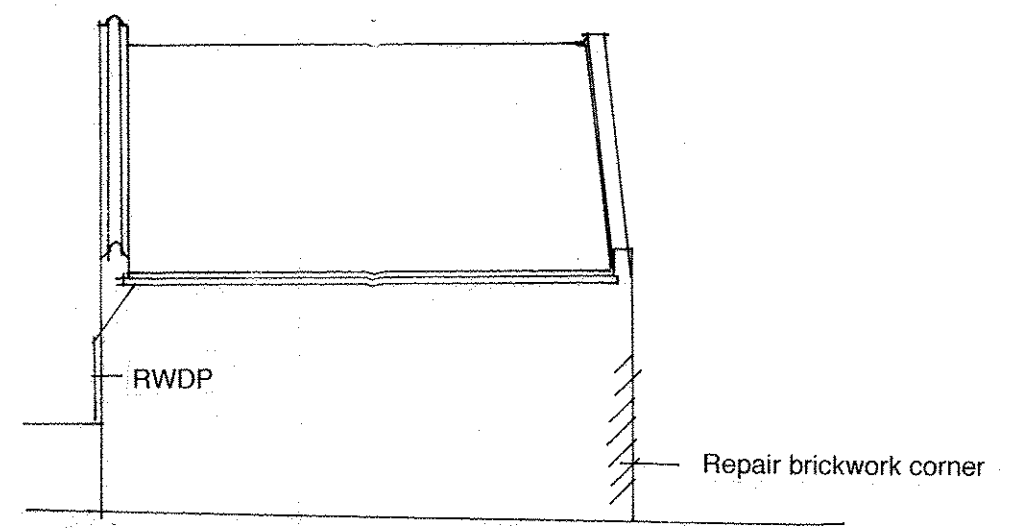


PUMP HOUSE REAR ELEVATION.



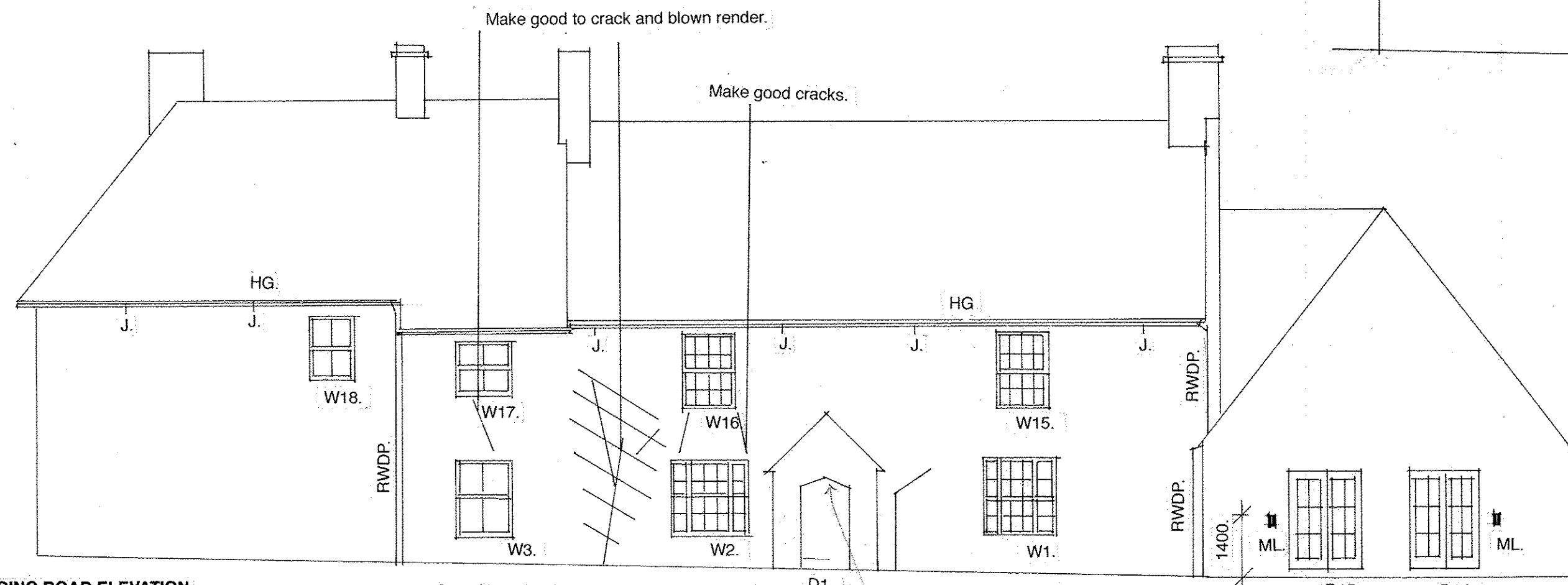
PUMP HOUSE FRONT ELEVATION.

Make good cracks with epoxy mortar.



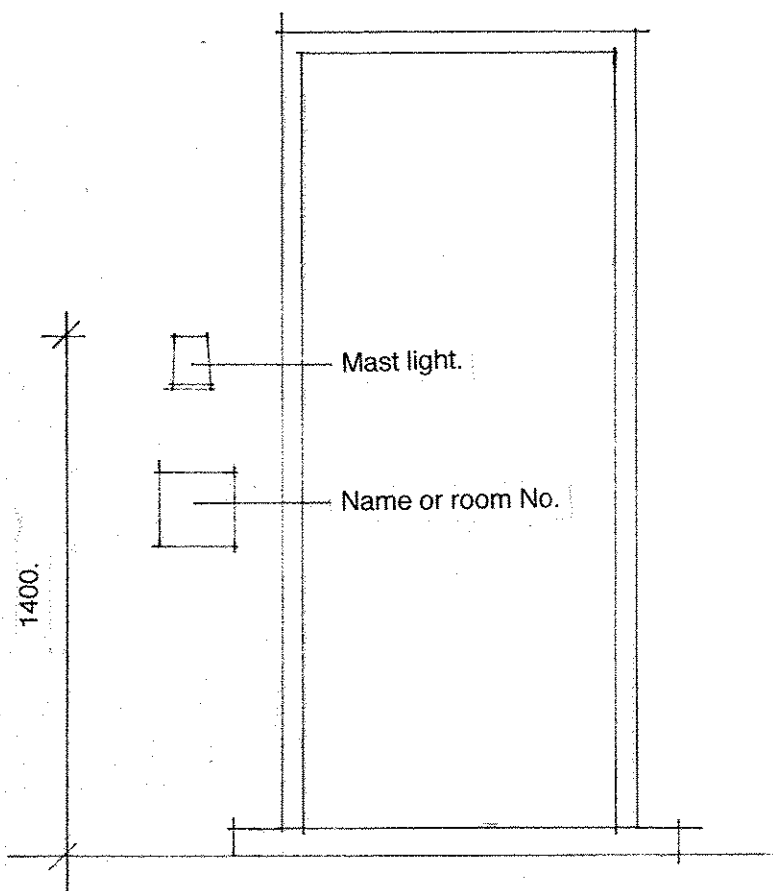
PUMP HOUSE ROAD ELEVATION

- LIGHTING**
- ML Mast light in Antique Brass, code 7962 by Astro Lighting
 - ML(e) Mast light with remote battery to make a suitable emergency light fitting
 - KOS Kos downlight in black code 7495 by Astro Lighting
 - J(e) Jura wall mounted down light code 7806 by Astro Lighting with emergency battery back up
 - B(e) Bulkhead light fitting in black code 7124 by Astro Lighting



MAIN BUILDING ROAD ELEVATION

Remove planter.
 Remove planter
 D1
 Remove planter.
 Kos surface mounted downlight mounted in porch



Generic bedroom entrance door.

- Notes**
1. All lighting supplied complete with lamps and any drivers, transformers and or accessories as necessary
 2. All external lighting controlled with daylight detectors and timers
- Gutters**
 All guttering and down pipes look-alike cast effect plastic guttering by Brett Martin or similar approved
 HG High capacity 100mm dia gutter
 SG Standard 100mm dia. gutter

All guttering generally fixed on steel holders and brackets
 Check condition and replace as necessary

Project: THE MALTINGS, WEYBOURNE, NORFOLK NR25 7SY.				
Subject: EXTERNAL ELEVATION				
Scale: 1 : 100	Date: May, 22.	Project Ref: TM.	Drwg. No.: 234.	Rev.:
Architects: Big Brown Dog Limited		The Old Post Office, Brookside, Dalham, Suffolk CB8 8TG		
T: 01638 500234		F: 01638 500343		E: bigbrowndog@keme.co.uk
Original size: A2				© BIG BROWN DOG LIMITED