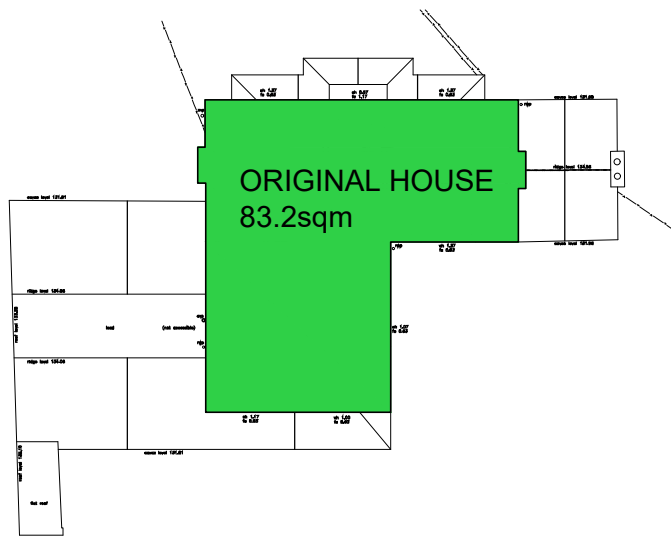
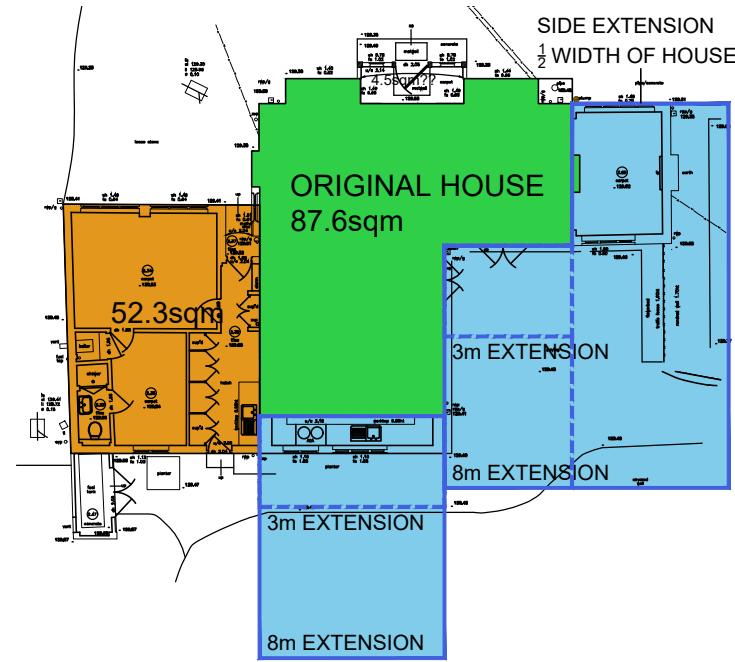
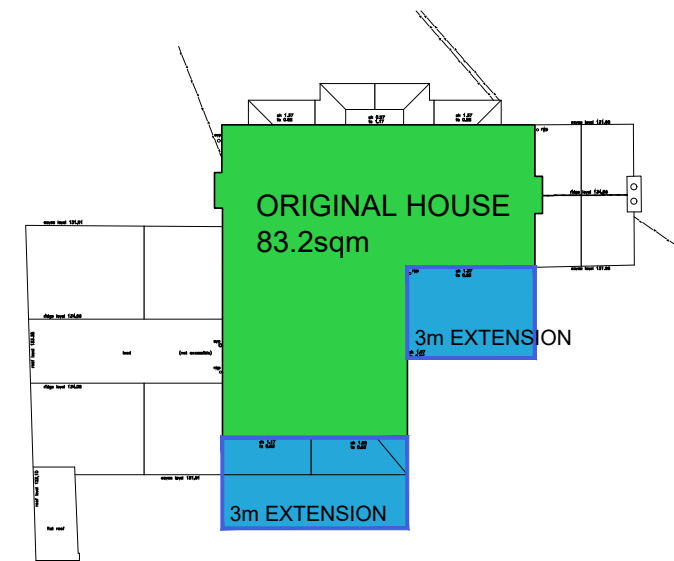


ORIGINAL = 175.2sqm GEA
 40% x 175.2 = 70.8sqm
 'EXTENSIONS' = 52.1sqm GEA
 UNUSED AREA = 18.7sqm



EXISTING PLAN AND DEMOLITION



PERMITTED DEVELOPMENT EXTENSIONS AT GROUND AND FIRST FLOOR

GROUND FLOOR

MAXIMUM PD AREA (8m EXTENSION) = 148.3sqm

FIRST FLOOR

PD AREA WITH 3m EXTENSION = 30.9sqm

PD AREA TOTALS (* including 40% balance of 18.7sqm)

8m GROUND FLOOR EXTENSIONS + 3m FIRST FLOOR = 179.2sqm (* 197.9sqm)

DEVELOPMENT POTENTIAL = 197.9sqm

**SOUTH FEN HOUSE
 PD STRATEGY
 AREAS CALCULATIONS
 1563-CALC-11**