

LANDSCAPE IMPLEMENTATION

Soil

General:

- Remove detritus (for example but not limited to; sticks, weeds, pieces of brick, concrete, glass, wire, canes, ties, prunings, wrapping materials, rubbish, stones >25mm)
- Protect soil from migration, compaction, and contamination

- Any imported topsoil bought to site is to be in 1 ton bags offloaded by crane/hiab under the direction of a banksman to avoid damage to retained tree canopies. Bags to be placed on ground protection. Distribute topsoil within 24 hours of delivery to ensure quality of topsoil is retained
- Do not mix topsoil and subsoil
- Grading of soils to be done in dry conditions

Topsoil in root protection areas (RPAs) and elsewhere:

- Compliance with British Standard is required. Any imported topsoil must be weed free, aerobic, and natural (not screened / man-made) with good crumb structure
- Topsoil shall be kept weed free by hand
- Carefully break up hard/compacted ground (hand tools only) to maximum depth of 50mm
- Where required loosen, aerate, and break up topsoil to fine tilth (hand tools only) to a maximum depth of 50mm
- If imported topsoil is required, to achieve ideal 350mm topsoil depth*, then do not exceed 100mm above ground build up of imported topsoil. *Seeded areas are to have ideal topsoil depth of 150mm; Low fertility topsoil for wildflower areas. Refer to British Standard 3882 for specification of imported soils and compliance requirements for testing, etc.
- Incorporate PAS100 certified organic matter (OM) as required (except in wildflower areas); organic fertiliser to be incorporated as required. Hedge requires abundant application of organic matter 1 part OM to 5 parts topsoil and slow release fertiliser (to manufacturers recommended application rate)

Planting

General:

- If water supply is or is likely to be restricted, do not carry out planting until instructed. If planting has been carried out, obtain instructions on watering
- Keep plants watered and in shade until planted
- Timing of planting works: if soil and climatic conditions are suitable then: deciduous trees and shrubs - Late October to late March; conifers and evergreens - September/October or April/May; herbaceous plants (including marginals) - September/October or April/May; dried bulbs, corms, and tubers -

September/October; green bulbs - after flowering in spring; wildflower plugs - Late August to mid November or March/April - aquatic plants: May/June or September/October; grass seed - March to October; wildflower seed - September/October or March/April; container plant stock - at any time if soil and climatic conditions are suitable

- Regarding plant stock, ensure consideration is given for the relevant British Standards
- 150mm otherwise directed, planting areas to be mulched with 50mm settled depth medium grade bark mulch
- Do not use peat or products containing peat
- After planting, ensure stock is lightly firmed in around plants without damaging roots to same level as surrounding ground with gentle cambers and no hollows; water thoroughly (full depth of topsoil) and without damaging or displacing plants or soil

Shrubs, herbaceous plants and hedges:

- All excavation to be done by hand unless otherwise agreed in writing
- 150mm wider than full spread of roots and 75mm deeper than root system depth. Except bareroot stock where slot planting is acceptable.

Grass and wildflower seeding:

- Grass seed to be Blue label certified varieties to EC purity and germination regulations, wildflower seed to be in accordance with Flora Locale's 'Code of practice for collectors, growers and suppliers of native flora'
- Seed to be cast seed by hand (or machine if appropriate) at density in schedule; firm in with a roll to give good seed-soil contact; do not incorporate or cover seed with topsoil
- First cut to 50mm once growth reaches 75mm in height; see proceeding section for further information

LANDSCAPE MAINTENANCE AND MANAGEMENT

General:

- Generally speaking, the landscape should be maintained to the standard required for its use/application
- Keep records of maintenance visits inclusive of: date, time and duration of visit, operations carried out, equipment used, number of staff, issues encountered
- Reinstate damage or disturbance to soil structure, planting, plant protection, grass, fencing, hard landscaping, structure or buildings to their original condition
- Control pests and invasive species
- Avoid disturbance to wildlife during maintenance
- Water plants (including trees), grass, and wildflower to full depth of topsoil as required upon inspection of topsoil moisture
- Appropriately dispose of arisings from maintenance
- Replace plants that fail with the approved species
- Prune plants (and trees) in accordance with good horticultural and arboricultural practice. Ensure relevant permissions are obtained for such works (particularly trees)

- prior to proceeding
- Ensure footways, signs, etc. are not obscured
- Planted and mulched areas are to be hand weeded as necessary
- Maintain mulch to a settled depth of 50mm

Fertilising:

- Fertilise trees and plants annually in spring, as required, using a suitable slow release fertiliser
- Fertilise 'amenity' grass areas annually in spring, as required, with a suitable organic fertiliser
- Do not apply fertiliser to wildflower areas

Mowing:

- Avoid damage to trees during mowing and general maintenance operations
- After the first cut, mow 'amenity' grass areas to a height of 25mm. Maximum height should typically not exceed 50mm.
- After the first cut, mow wildflower areas every 6-8 weeks in the first year until November; then mow once a year in autumn after seeds have dropped. Additional mowing may be undertaken in early spring and throughout summer depending on species
- Do not cut wildflower/grass when it is wet
- Remove all arisings

Hedges:

- Follow species specific guidance. Only cut/trim out of bird nesting season.
- Trim established hedges carefully and neatly to regular line and shape, with the width at the top less than that at the base

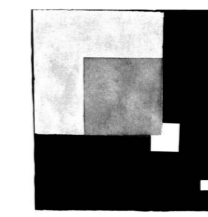
ECOLOGICAL INTERVENTIONS

Install at anytime of year. Beyond ensuring structures are safe and stable maintenance to be minimal to avoid disturbance. 2 no. log piles/small dead hedges; 1 no. invertebrate habitat.



Log piles/small dead hedges to be constructed using untreated soft or hard wood timber no higher than 600mm (~knee high). Leaves, twigs, and other organic detritus to be loosely packed into some of the apertures between logs. As above, minimal maintenance required other than to ensure structure is safe and secure. As the wood (and other organic matter) breaks down over time (3-5 years) it will be necessary to incorporate new timber into the structure.

Invertebrate habitat (Vivara Pro Insect Hotel XXL) to be placed on level ground. If it is necessary to secure below ground then only do so by hand digging and do not dig deeper than 100mm to avoid tree roots in RPA. To be dry packed.



NEW ENCLOSURE
LANDSCAPE-LED-DESIGN

specialist in the creation of spaces for **people + nature**

T 07868603026 E richard@newenclosure.com W newenclosure.com
A 1 Cecil Terrace, Salisbury, Wiltshire, SP2 9ND

EXISTING TREES TO BE RETAINED

PROPOSED HEDGEROW / HEDGE PLANTING

PROPOSED PERENNIAL & SHRUB PLANTING

PROPOSED AMENITY GRASS TURFED OR SEEDED

PROPOSED WILDFLOWER & GRASS

PROPOSED ECOLOGICAL INTERVENTIONS
LP DENOTES - LOG PILE; IH DENOTES - INVERTEBRATE HABITAT (VIVARA PRO INSECT HOTEL XXL, or similar approved)

NATIVE HEDGEROW MIXES

Number	Species	Specification	Height
15	Acer campestre	BR	60-80cm
15	Corylus avellana	BR	60-80cm
33	Cornus sanguinea	BR	60-80cm
62	Crataegus monogyna	BR	60-80cm
5	Euonymus europaeus	BR	60-80cm
28	Ilex aquifolium	C; 5L	60-80cm
15	Prunus spinosa	BR	60-80cm
10	Rosa canina	BR	60-80cm
10	Viburnum opulus	BR	60-80cm

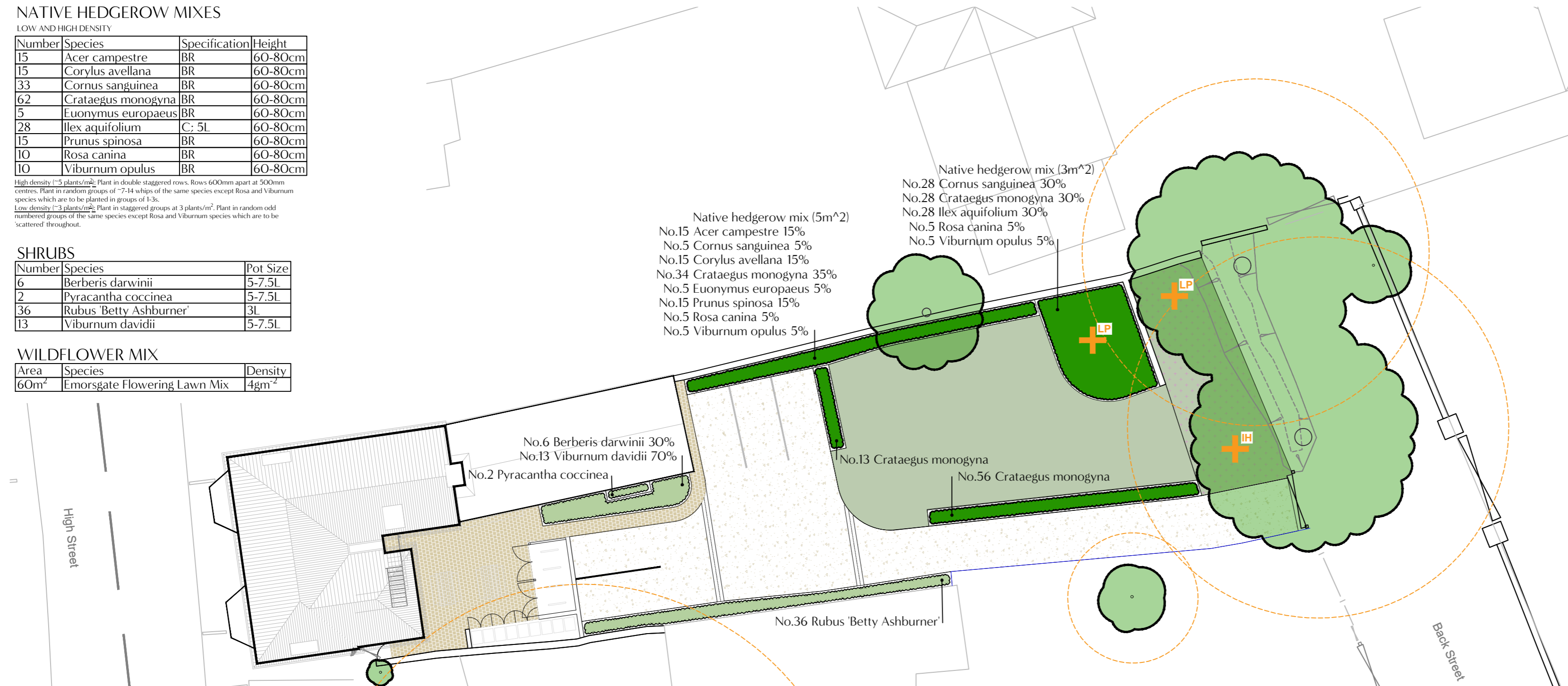
High density (~5 plants/m²). Plant in double staggered rows. Rows 600mm apart at 500mm centres. Plant in random groups of ~7-14 whips of the same species except Rosa and Viburnum species which are to be planted in groups of 1-3.
Low density (~3 plants/m²). Plant in staggered groups at 3 plants/m². Plant in random odd numbered groups of the same species except Rosa and Viburnum species which are to be 'scattered' throughout.

SHRUBS

Number	Species	Pot Size
6	Berberis darwinii	5-7.5L
2	Pyracantha coccinea	5-7.5L
36	Rubus 'Betty Ashburner'	3L
13	Viburnum davidii	5-7.5L

WILDFLOWER MIX

Area	Species	Density
60m ²	Emorsgate Flowering Lawn Mix	4gm ⁻²



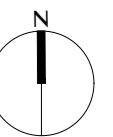
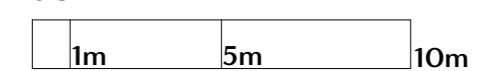
CODES OF PRACTICE, RECOMMENDATIONS, AND SPECIFICATIONS

Further to the output provided by New Enclosure, consideration is to be given to the output of other project team consultants (e.g. architect, ecologist, arboriculturalist, etc.), the Local Planning Authority, and relevant statutory and non-statutory guidance, including the British Standards noted below. Discrepancies (or similar) are to be reported to New Enclosure (and where relevant the client, project team, and Local Planning Authority) in writing to seek clarification and/or resolution before proceeding. See title block for contact details for New Enclosure.

British Standards:

- Works to be carried out with consideration for the current version of 'BS4428 - Code of practice for general landscape operations (excluding hard surfaces)'
- Plants (including trees) to be compatible with current versions of the 'BS3936 - Nursery Stock ...' series; turf to be compatible with current version of 'BS3969 - Recommendations for Turf for general purposes'
- Transplanting of trees to be undertaken with consideration for the current version of 'BS8545 - Trees: from nursery to independence in the landscape'
- Operations involving topsoil to be compliant with the current version of 'BS3882 - Specification for topsoil'
- Operations involving subsoil to be compliant with the current version of 'BS8601 - Specification for subsoil and requirements for use'
- Operations involving existing trees are to be undertaken with consideration for the current versions of 'BS5837 - Trees in relation to design, demolition and construction', and 'BS3998 - Tree work'
- Maintenance to be carried out with consideration for the current versions of the 'BS7370 - Grounds maintenance ...' series

SCALE BAR



REV	DESC	DATE	RC BY	RC CHK
-	First Issue	2022-11-01	RC	RC

PROJECT

High Street, Lakenheath

CLIENT

Bird Construction & Maintenance

DRAWING TITLE

Landscape / Biodiversity Enhancement Plan

DRAWING NO.	REV	STATUS	SCALE
363_PN_01	-	PLANNING	1:200@A2