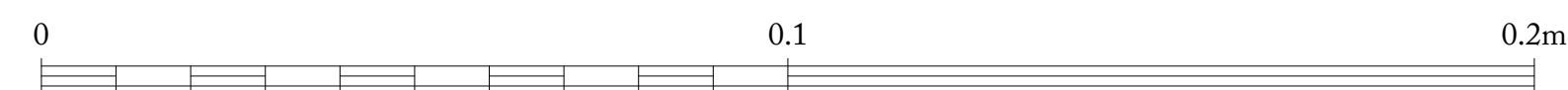


1 FRAME DETAIL  
1:1 @ A1

2 MULLION DETAIL  
1:1 @ A1

Detailing of window conversion to exactly match existing window door to north-east elevation



**Materials**  
Painted timber with frame and mullions reused.  
Glazing - Original glass retained

REV. NO	AMENDMENT	DATE
P1	Issued for Planning	08.11.22

<b>Ben Pentreath</b>		3 Lamp Office Court Lamb Conduit Street London WC1N 3NF T +44 (0) 20 7430 2424 benpentreath.com	
PROJECT:	HELMINGHAM HALL		
TITLE:	PROPOSED KITCHEN WINDOW DOOR DETAILS 1		
DRAWING NO:	A-101.5	REV. NO:	P1
SCALE:	1:1@A1 1:2@A3	DRAWN BY:	PWD
DATE:	08.11.22	CHECKED BY:	RJC

All dimensions to be checked on site.  
All designs © Ben Pentreath Ltd 2020. Not to be reproduced without permission