

7.4 Aerial Photography

List of aerial photographs held by Historic England identified within the Study Area.

Sortie	Frame Number	Centred	Date
Verticals			
RAF/106G/UK/1489	4340	TF 494 121	09 MAY 1946
RAF/106G/UK/1489	4341	TF 501 121	09 MAY 1946
RAF/106G/UK/1489	4342	TF 507 121	09 MAY 1946
RAF/106G/UK/1489	4478	TF 516 098	09 MAY 1946
RAF/106G/UK/1489	4479	TF 509 097	09 MAY 1946
RAF/106G/UK/1489	4480	TF 502 096	09 MAY 1946
RAF/106G/UK/1489	4481	TF 495 095	09 MAY 1946
RAF/106G/UK/1606	3388	TF 514 101	27 JUN 1946
RAF/106G/UK/1606	3389	TF 509 099	27 JUN 1946
RAF/106G/UK/1606	3390	TF 503 098	27 JUN 1946
RAF/106G/UK/1606	3391	TF 498 096	27 JUN 1946
RAF/106G/UK/1606	6385	TF 501 120	27 JUN 1946
RAF/106G/UK/1606	6386	TF 497 118	27 JUN 1946
RAF/106G/UK/1606	6387	TF 492 116	27 JUN 1946
RAF/58/655	3049	TF 498 102	25 APR 1951
RAF/58/655	3050	TF 495 101	25 APR 1951
RAF/58/655	3051	TF 493 101	25 APR 1951
RAF/58/655	3052	TF 490 100	25 APR 1951
RAF/58/655	3071	TF 493 113	25 APR 1951
RAF/58/655	3072	TF 490 113	25 APR 1951
RAF/58/655	3073	TF 488 112	25 APR 1951
RAF/58/655	4049	TF 497 111	25 APR 1951
RAF/58/655	4050	TF 494 111	25 APR 1951
RAF/58/655	4051	TF 492 110	25 APR 1951
RAF/58/655	4052	TF 489 110	25 APR 1951
RAF/58/1337	238	TF 514 090	11 JAN 1954
RAF/58/1337	239	TF 514 096	11 JAN 1954
RAF/58/1337	240	TF 506 098	11 JAN 1954
RAF/58/1337	288	TF 504 110	11 JAN 1954
RAF/58/1337	289	TF 504 103	11 JAN 1954
RAF/58/1337	290	TF 504 096	11 JAN 1954
RAF/58/1337	288	TF 485 112	11 JAN 1954
RAF/58/1337	289	TF 485 105	11 JAN 1954
MAL/65071	19	TF 489 104	09 AUG 1965
MAL/65071	20	TF 491 106	09 AUG 1965
MAL/65071	21	TF 493 109	09 AUG 1965
MAL/65071	22	TF 494 112	09 AUG 1965
MAL/65071	23	TF 496 114	09 AUG 1965
MAL/65071	62	TF 489 114	09 AUG 1965
MAL/65071	63	TF 490 111	09 AUG 1965
MAL/65071	64	TF 492 109	09 AUG 1965
MAL/65071	65	TF 493 106	09 AUG 1965
MAL/65071	66	TF 494 103	09 AUG 1965
MAL/68019	29	TF 492 118	08 APR 1968
MAL/68019	30	TF 501 118	08 APR 1968
MAL/68019	33	TF 509 101	08 APR 1968
MAL/68019	34	TF 501 101	08 APR 1968

MEERDYKE SOLAR FARM, NORFOLK: HERITAGE IMPACT ASSESSMENT

MAL/68019	35	TF 493 102	08 APR 1968
MAL/68019	57	TF 512 085	08 APR 1968
MAL/69058	124	TF 489 112	10 JUN 1969
OS/70002	14	TF 515 102	03 MAR 1970
OS/70002	15	TF 509 102	03 MAR 1970
OS/70002	16	TF 503 102	03 MAR 1970
OS/70002	17	TF 496 102	03 MAR 1970
OS/70002	49	TF 517 094	03 MAR 1970
OS/70002	50	TF 510 094	03 MAR 1970
OS/70002	51	TF 504 094	03 MAR 1970
OS/85177	10	TF 489 103	07 JUL 1985
OS/85177	11	TF 494 108	07 JUL 1985
OS/85177	12	TF 499 113	07 JUL 1985
OS/66134	91	TF 495 114	04 JUN 1966
OS/66134	92	TF 495 107	04 JUN 1966
OS/66134	93	TF 495 100	04 JUN 1966
OS/66134	94	TF 495 093	04 JUN 1966
OS/68140	51	TF 499 116	30 MAY 1968
OS/68140	52	TF 501 110	30 MAY 1968
OS/68140	53	TF 500 104	30 MAY 1968
OS/68140	54	TF 502 097	30 MAY 1968
OS/68140	66	TF 510 090	30 MAY 1968
OS/68140	67	TF 511 096	30 MAY 1968
OS/68140	68	TF 512 102	30 MAY 1968
OS/89052	267	TF 505 092	27 MAR 1989
OS/89052	268	TF 504 100	27 MAR 1989
OS/89052	269	TF 505 105	27 MAR 1989
OS/89052	270	TF 504 112	27 MAR 1989
OS/89052	319	TF 516 107	27 MAR 1989
OS/89052	320	TF 517 100	27 MAR 1989
OS/89052	321	TF 517 093	27 MAR 1989
OS/95561	20	TF 495 095	19 JUN 1995
OS/95561	21	TF 502 095	19 JUN 1995
OS/95561	22	TF 509 095	19 JUN 1995
OS/95561	23	TF 515 095	19 JUN 1995
RAF/58/6572	361	TF 502 094	01 JAN 1965
OS/00903	1120	TF 519 094	09 FEB 2000
OS/00903	1121	TF 515 094	09 FEB 2000
OS/00903	1122	TF 510 094	09 FEB 2000
OS/00903	1123	TF 505 094	09 FEB 2000
OS/00903	1124	TF 500 094	09 FEB 2000
OS/00903	1125	TF 495 094	09 FEB 2000
OS/96114	8	TF 486 110	03 JUN 1996
OS/96114	9	TF 491 115	03 JUN 1996
OS/96114	10	TF 496 120	03 JUN 1996
OS/96332	15	TF 517 106	13 OCT 1996
OS/96332	16	TF 510 106	13 OCT 1996
OS/96332	17	TF 503 106	13 OCT 1996
OS/96332	18	TF 496 106	13 OCT 1996
OS/96332	19	TF 489 106	13 OCT 1996
OS/96332	77	TF 503 118	13 OCT 1996
OS/96332	78	TF 497 118	13 OCT 1996
MAL/61466	89676	TF 506 116	05 MAR 1961

MEERDYKE SOLAR FARM, NORFOLK: HERITAGE IMPACT ASSESSMENT

MAL/61466	89677	TF 511 107	05 MAR 1961
MAL/61466	89678	TF 515 099	05 MAR 1961
OS/03912	847	TF 514 099	17 APR 2003
OS/03912	848	TF 504 099	17 APR 2003
OS/03912	849	TF 495 099	17 APR 2003
OS/03912	872	TF 495 116	17 APR 2003
OS/03912	873	TF 504 116	17 APR 2003
OS/04111	149	TF 491 092	01 SEP 2004
OS/04111	150	TF 492 106	01 SEP 2004
OS/05902(Z)	2247	TF 494 098	23 AUG 2005
OS/05902(Z)	2248	TF 503 098	23 AUG 2005
OS/05902(Z)	2249	TF 513 098	23 AUG 2005
OS/05915(Z)	8224	TF 496 101	09 OCT 2005
OS/05915(Z)	8225	TF 504 101	09 OCT 2005
OS/05915(Z)	8226	TF 514 101	09 OCT 2005
OS/05915(Z)	8250	TF 505 117	09 OCT 2005
OS/05915(Z)	8251	TF 495 117	09 OCT 2005
OS/05921(Z)	6810	TF 492 098	14 JUL 2005
OS/05921(Z)	6811	TF 502 098	14 JUL 2005
OS/05921(Z)	6812	TF 511 098	14 JUL 2005
OS/AF/05C/597	6816	TF 494 101	12 JUL 2005
OS/AF/05C/597	6817	TF 503 101	12 JUL 2005
OS/AF/05C/597	6818	TF 512 101	12 JUL 2005
OS/AF/05C/597	6888	TF 502 118	12 JUL 2005
OS/AF/05C/597	6889	TF 492 118	12 JUL 2005
ADA/047	15	TF 499 110	22 JUN 1981
ADA/047	16	TF 499 100	22 JUN 1981
ADA/058	589	TF 500 099	11 AUG 1981
ADA/058	590	TF 501 106	11 AUG 1981
ADA/130	248	TF 501 088	06 JUN 1983
ADA/130	249	TF 500 107	06 JUN 1983
ADA/212	166	TF 501 091	24 JUL 1984
ADA/212	167	TF 500 101	24 JUL 1984
ADA/212	168	TF 500 109	24 JUL 1984
ADA/586	54	TF 515 092	31 JUL 1993
ADA/586	55	TF 513 097	31 JUL 1993
ADA/586	56	TF 511 101	31 JUL 1993
ADA/586	57	TF 509 106	31 JUL 1993
ADA/586	58	TF 508 109	31 JUL 1993
ADA/586	59	TF 506 113	31 JUL 1993
ADA/586	60	TF 504 118	31 JUL 1993
Obliques			
CCC 5201	/ E2491	TF 488 102	10 MAY 1934
CCC 5201	/ E2524	TF 496 096	10 MAY 1934
CCC 5201	/ E2493	TF 501 102	10 MAY 1934
CCC 5201	/ E2549	TF 516 085	10 MAY 1934
CCC 5201	/ E2526	TF 514 097	10 MAY 1934
NLA 10091	/ TF5110A	TF 518 102	28 JUL 1983
NLA 10091	/ TF5110B	TF 518 102	28 JUL 1983
CCC 5201	/ E2495	TF 510 102	10 MAY 1934
CCC 11757	/ 7536	TF 523 099	Unknown
CCC 5201	/ E2497	TF 521 101	10 MAY 1934



Figures

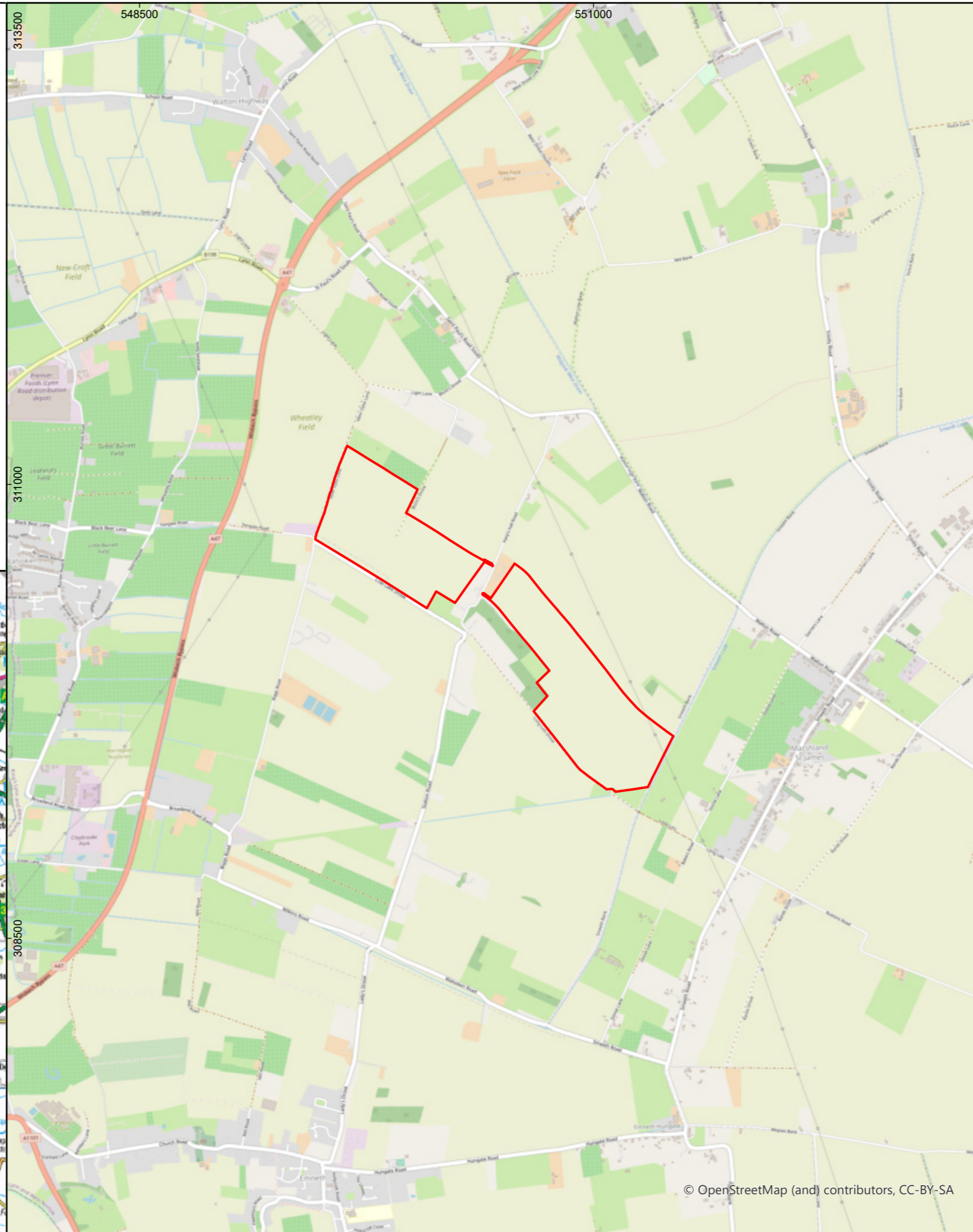
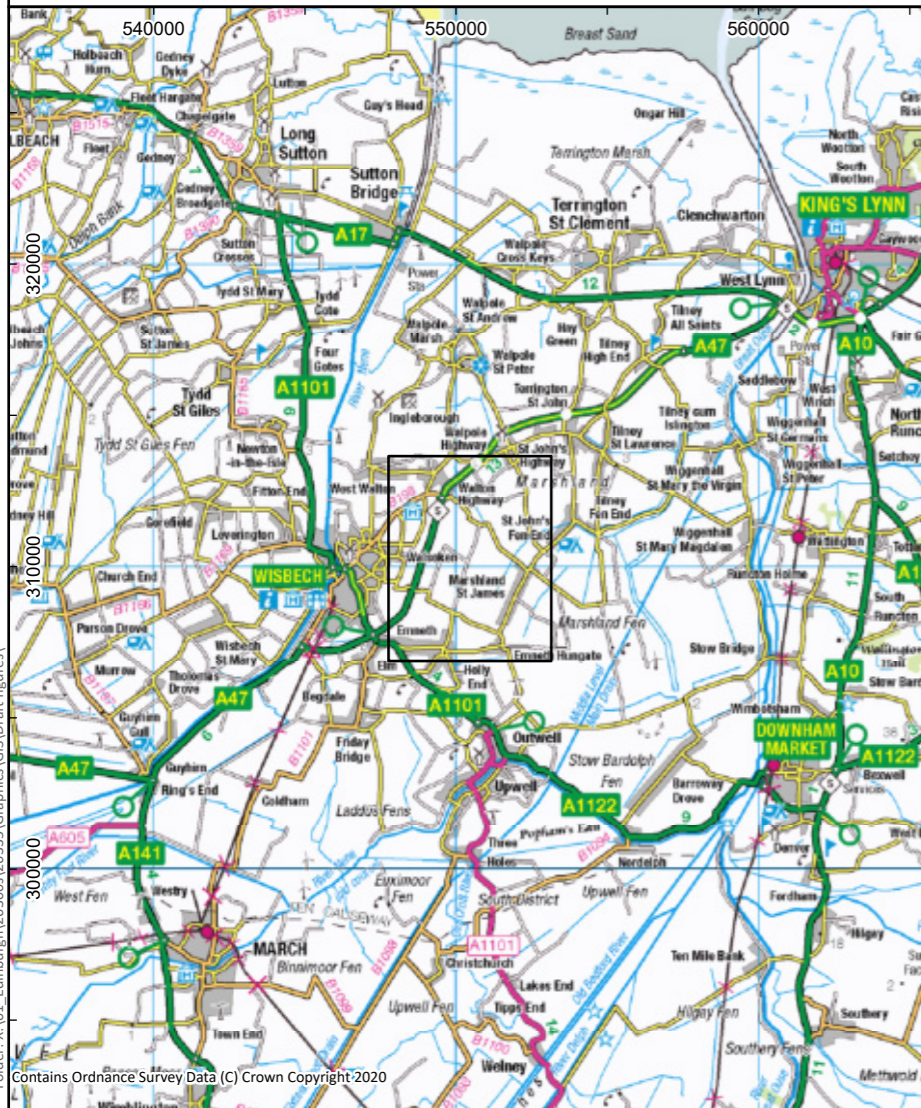
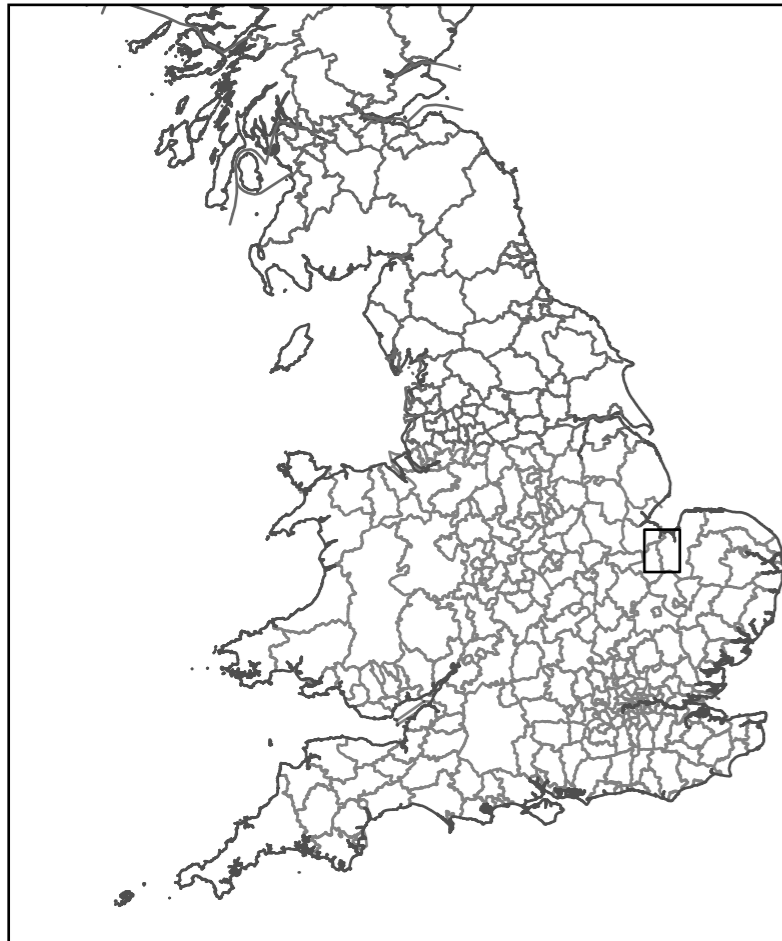


Figure 1

Site Location Plan

Legend

- Site boundary

FOR

Ramboll UK Ltd
240 Blackfriars Road
London
SE1 8NW

Drawn/checked: YR/SO

DWG no: 01/26335/CHA/01/01

AOC Project No: 26335



© AOC Archaeology Group 2022



SYSTEM

Coordinate System: British National Grid
Projection: Transverse Mercator
Datum: OSGB 1936

SCALE

1:25,000 @ A3

SCALE



© OpenStreetMap (and) contributors, CC-BY-SA

Designated Heritage Assets and the 2km Study Area

Legend

- Site Boundary
- 2km Study Area
- ▲ Listed Building: Grade I
- ▲ Listed Building: Grade II

FOR
Ramboll UK Ltd
80 George Street
Edinburgh
EH2 3BU

Drawn/checked: GM/SO

DWG no: 01/26335/HIA/02/01

AOC Project No.: 26335

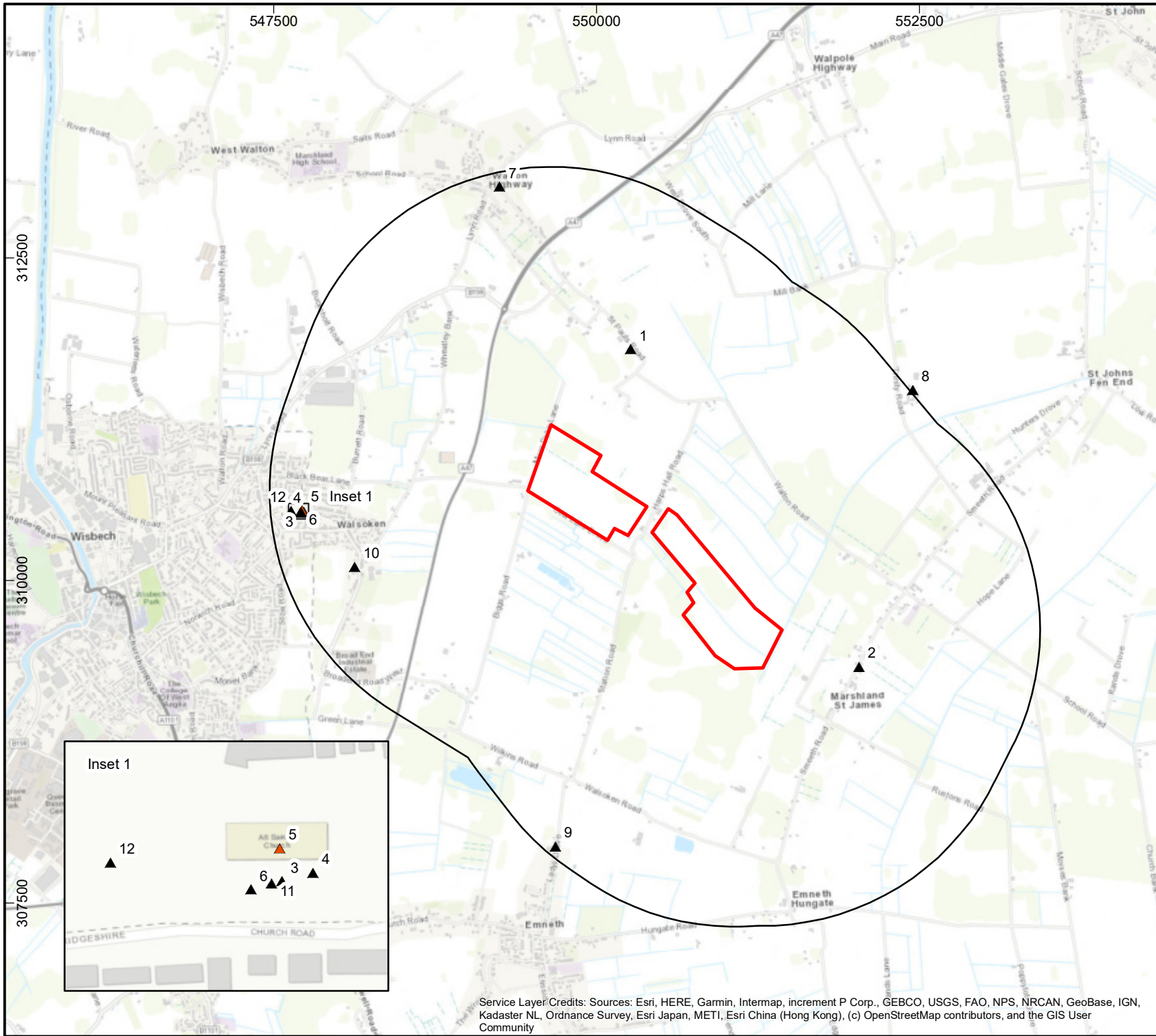
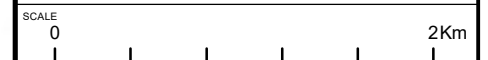


(C) AOC Archaeology Group 2022



SYSTEM
Coordinate System: British National Grid
Projection: Transverse Mercator
Datum: OSGB 1936

SCALE
1:40,000 @ A4



Non-designated Heritage Assets and the 1km Study Area

Legend

- Site Boundary
- 1km Study Area
- Non-designated Asset
- Event
- HER Monument Polygon
- HER Monument Polyline
- HER Event Polygon

FOR

Ramboll UK Ltd
80 George Street
Edinburgh
EH2 3BU

Drawn/checked:

GM/SO

DWG no.:

01/26335/HIA/03/01

AOC Project No.:

26335



(C) AOC Archaeology Group 2022



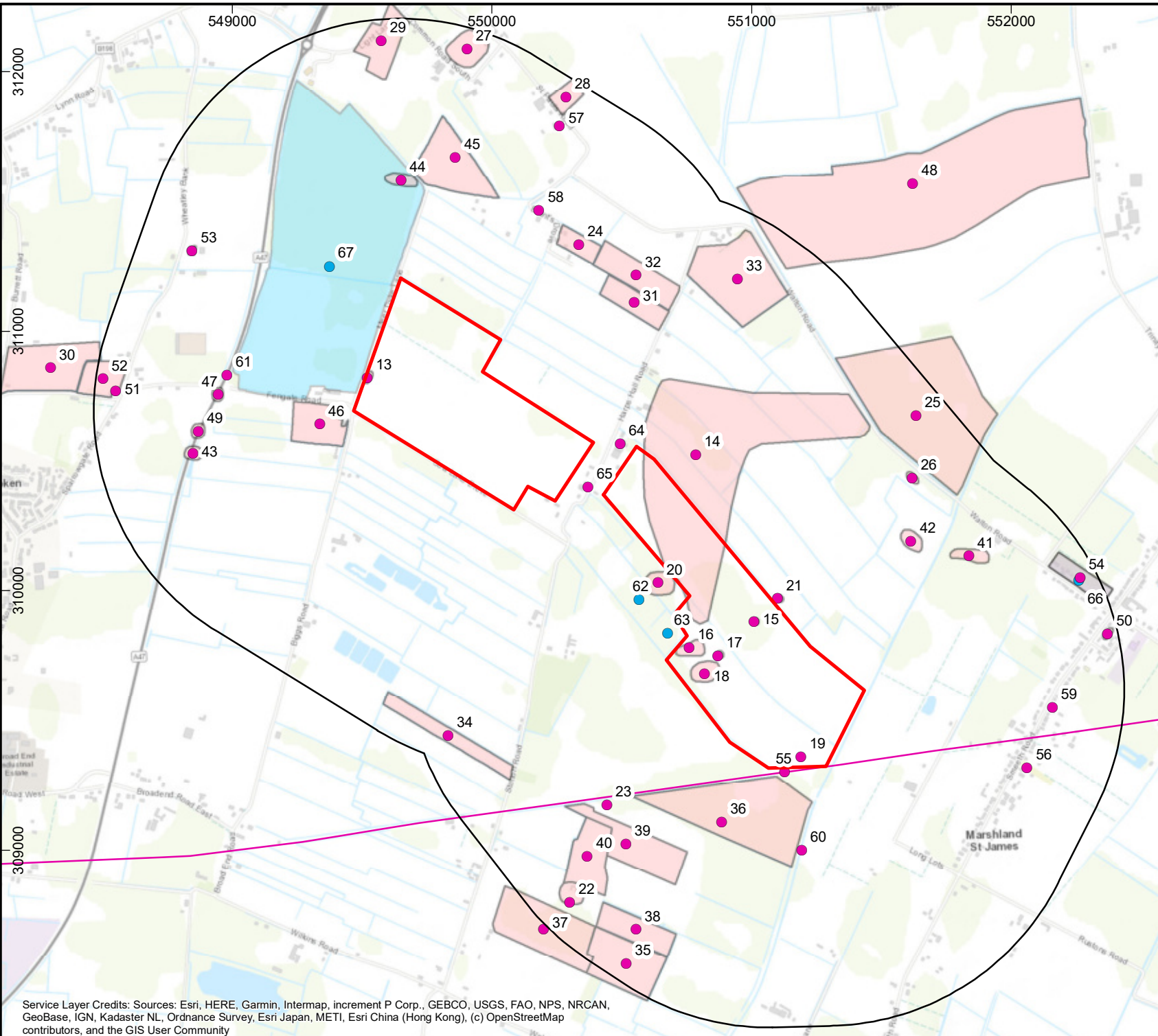
SYSTEM

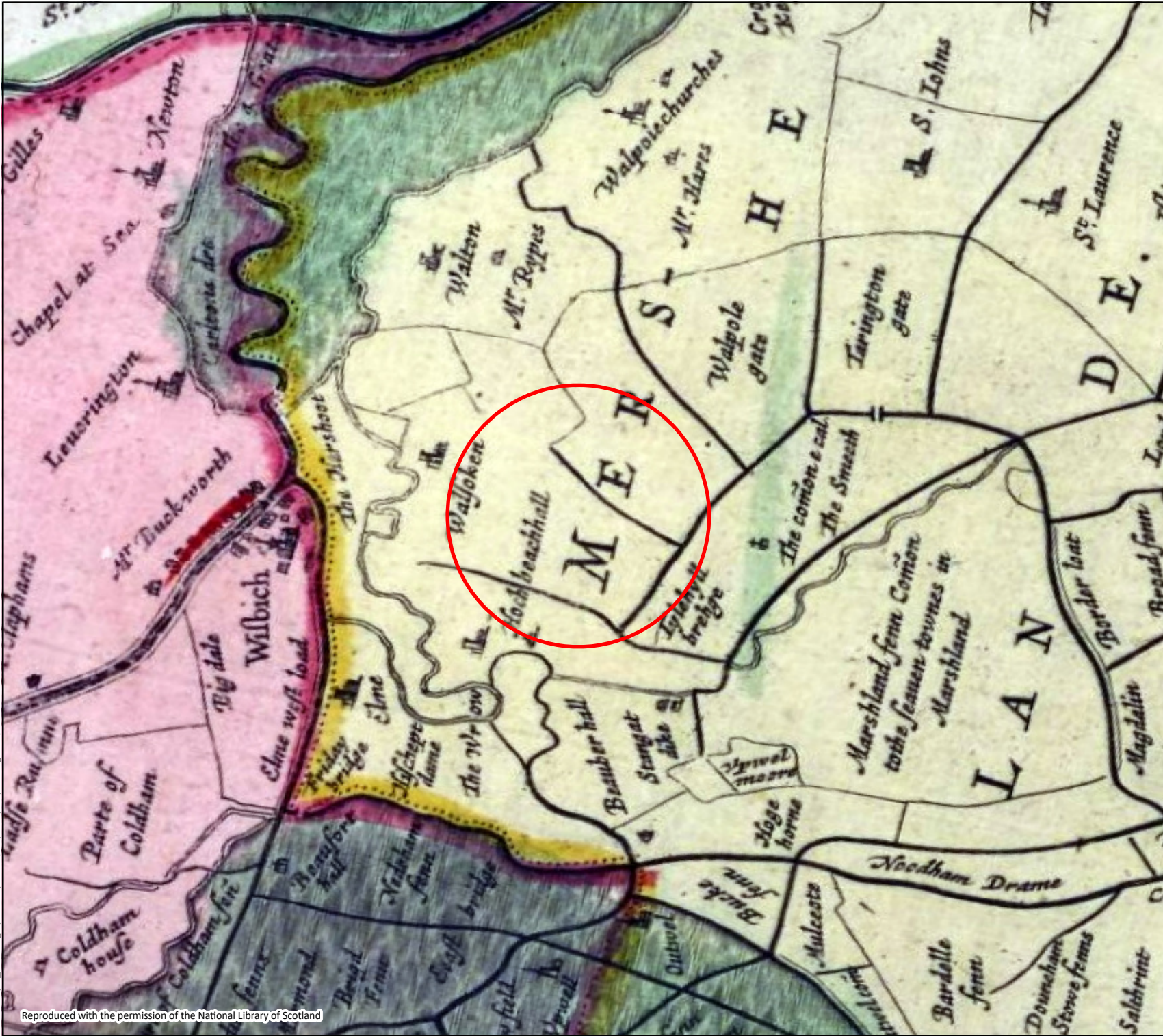
Coordinate System: British National Grid
Projection: Transverse Mercator
Datum: OSGB 1936

SCALE

1:20,000 @ A4

SCALE






Figure

Extract from Blaeu map, 1662

Legend

 Approximate Site Location

FOR
 Ramboll UK Ltd
 240 Blackfriars Road
 London
 SE1 8NW

Drawn/checked:	YR/SO
DWG no:	01/26335/CHA/04/01
AOC Project No:	26335



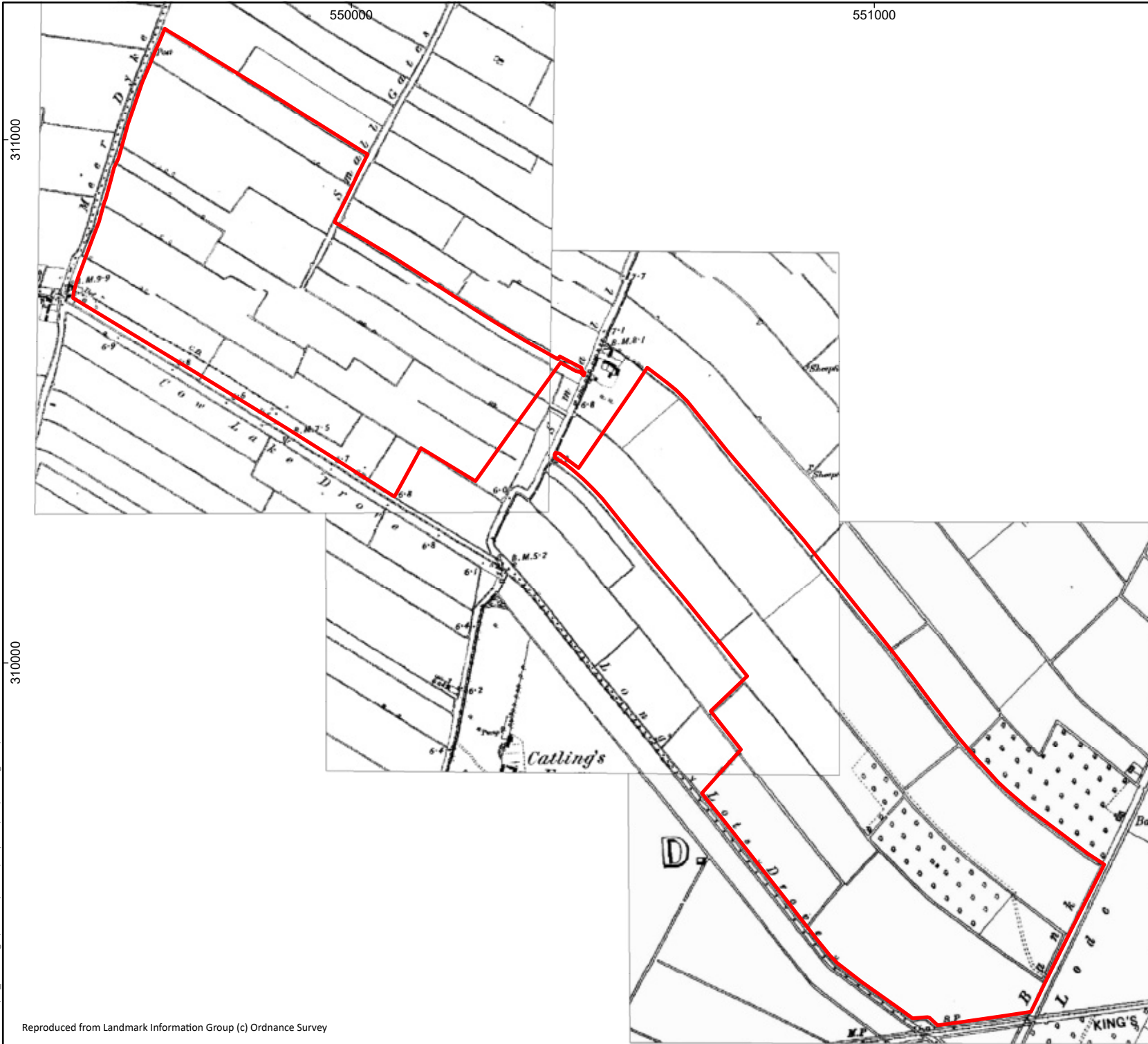
© AOC Archaeology Group 2022



SYSTEM
 Coordinate System: British National Grid
 Projection: Transverse Mercator
 Datum: OSGB 1936

SCALE
 Not to scale

SCALE
 Not to scale




Figure

5

Extract from Ordnance Survey Map, 1866

Legend

 Site boundary

FOR

Ramboll UK Ltd
240 Blackfriars Road
London
SE1 8NW

Drawn/checked:	YR/SO
DWG no:	01/26335/CHA/05/01
AOC Project No:	26335



© AOC Archaeology Group 2022



SYSTEM
Coordinate System: British National Grid
Projection: Transverse Mercator
Datum: OSGB 1936

SCALE
1:10,000 @ A4



Folder: X:\01_Edminburgh\263005\26335\Graphics\GIS\Draft figures\

311000

310000

550000

551000




Figure

6

Extract from Ordnance Survey Map, 1927

Legend

 Site boundary

FOR

Ramboll UK Ltd
240 Blackfriars Road
London
SE1 8NW

Drawn/checked:	YR/SO
DWG no:	01/26335/CHA/06/01
AOC Project No:	26335



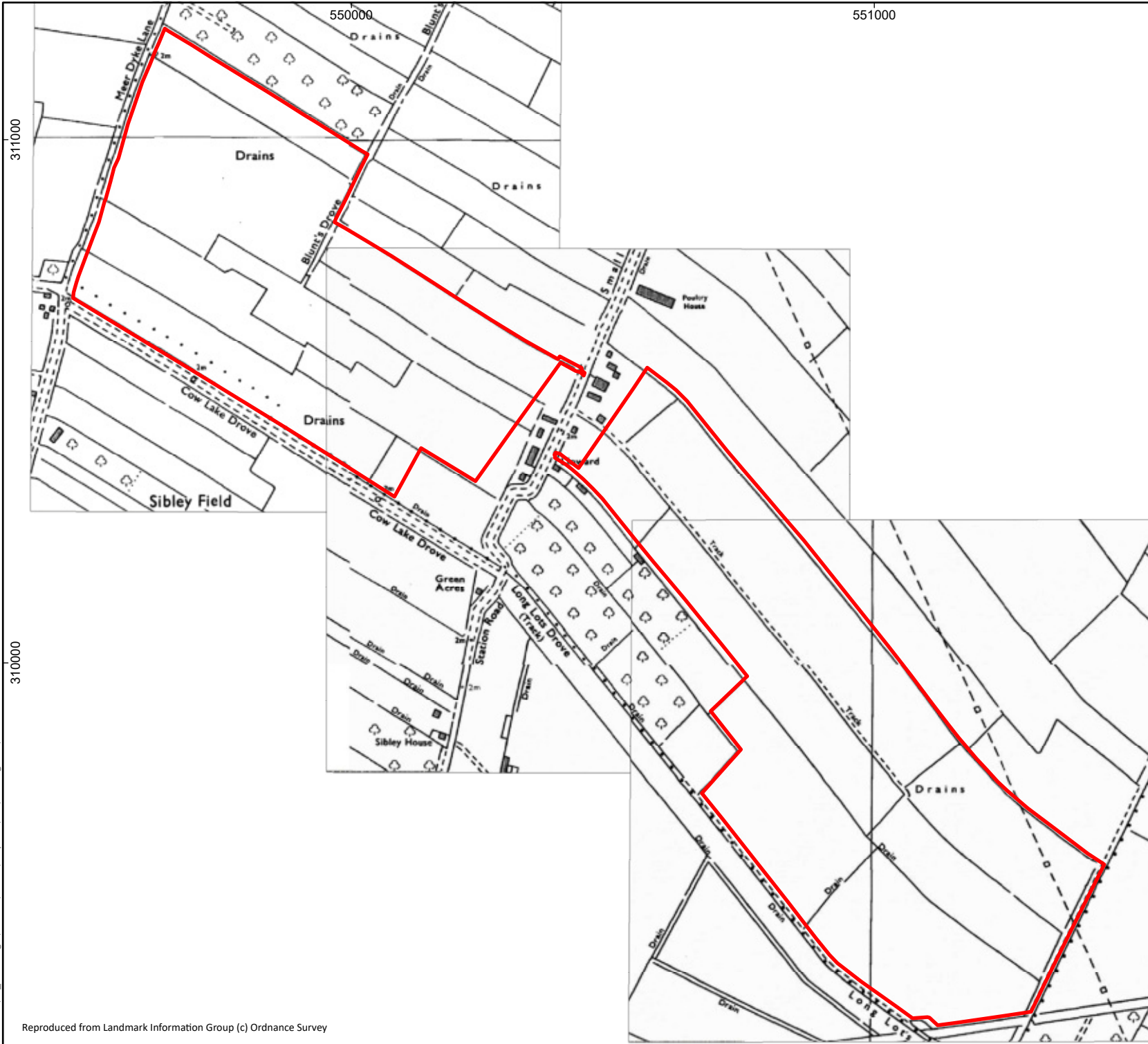
© AOC Archaeology Group 2022



SYSTEM
 Coordinate System: British National Grid
 Projection: Transverse Mercator
 Datum: OSGB 1936

SCALE 1:10,000 @ A4






Figure

7

Extract from Ordnance Survey Map, 1972-1979

Legend

 Site boundary

FOR

Ramboll UK Ltd
240 Blackfriars Road
London
SE1 8NW

Drawn/checked:	YR/SO
DWG no:	01/26335/CHA/07/01
AOC Project No:	26335



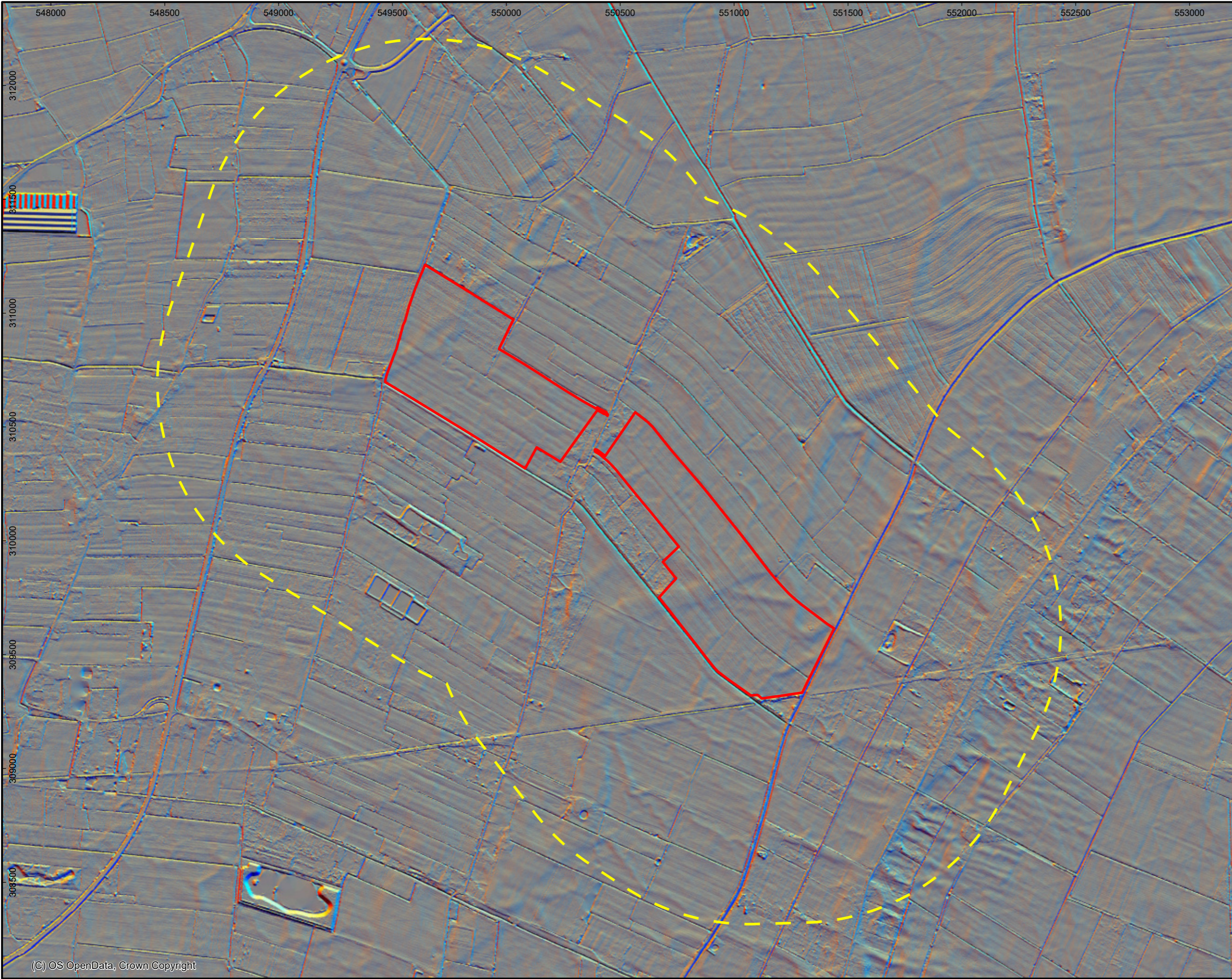
© AOC Archaeology Group 2022



SYSTEM
Coordinate System: British National Grid
Projection: Transverse Mercator
Datum: OSGB 1936

SCALE
1:10,000 @ A4





26335 Meerdyke Solar Farm

LiDAR Analysis
Analytical Hillshade from
16 directions

- Legend**
- Site boundary
 - - - Study Area, 1km buffer

FOR	
Drawn/checked:	RSR
DWG no:	02/26335/LIDAR/22/05
AOC Project No.:	26335



SYSTEM
Coordinate System: British National Grid
Projection: Transverse Mercator
Datum: OSGB 1936

SCALE
1:16,000 @ A3

