

Figure

9

26335 Meerdyke Solar Farm

LiDAR Analysis
Analytical Hillshade from
16 directions

Legend

■ Site boundary

FOR

Drawn/checked: RSR

DWG no: 02/26335/LIDAR/22/05

AOC Project No.: 26335



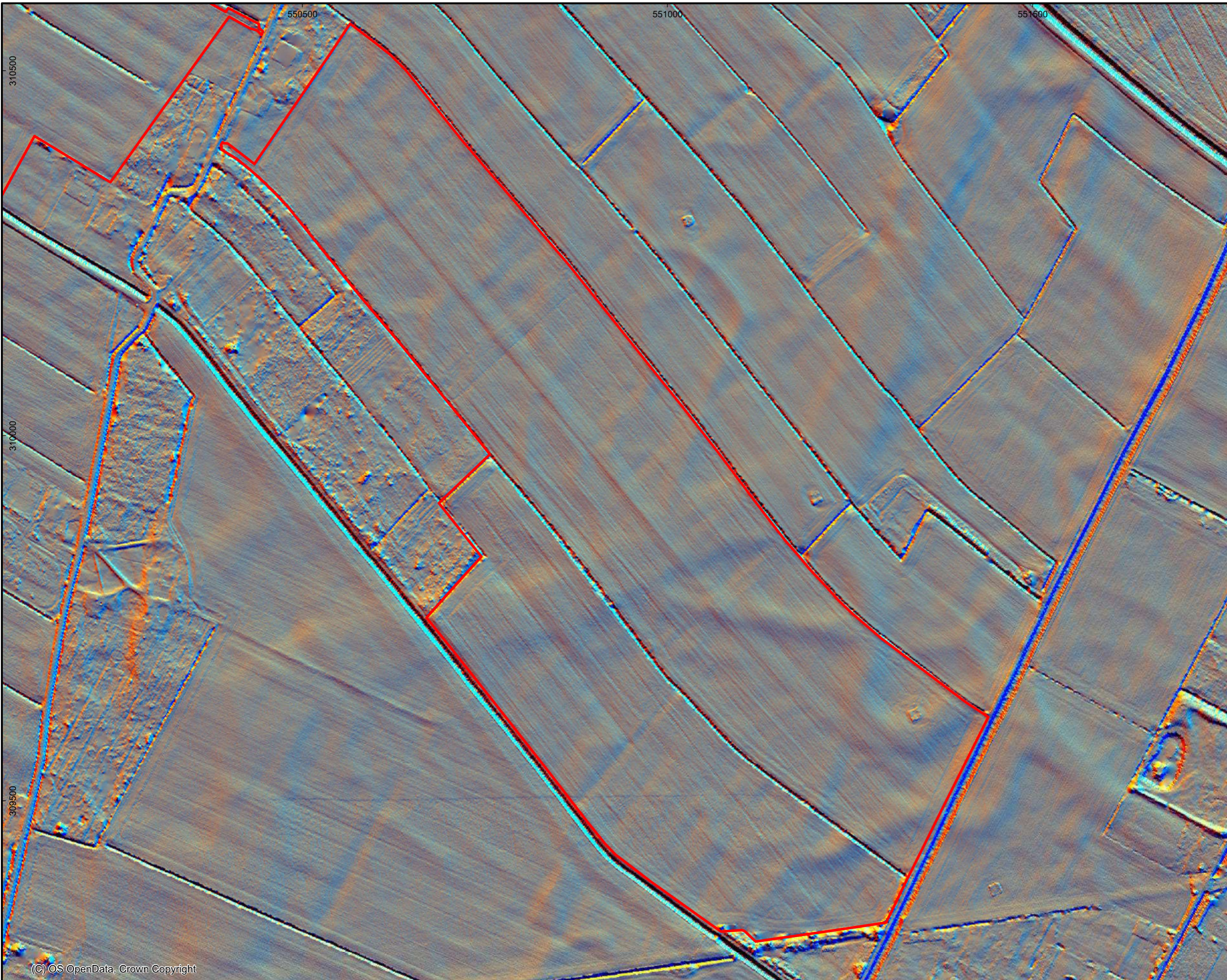
(C) AOC Archaeology Group 2022



SYSTEM
Coordinate System: British National Grid
Projection: Transverse Mercator
Datum: OSGB 1936

SCALE 1:5,000 @ A3





Figure

10

26335 Meerdyke Solar Farm

LiDAR Analysis
Analytical Hillshade from
16 directions

Legend

■ Site boundary

FOR

Drawn/checked: RSR

DWG no: 02/26335/LiDAR/22/05

AOC Project No.: 26335



(C) AOC Archaeology Group 2022



SYSTEM
Coordinate System: British National Grid
Projection: Transverse Mercator
Datum: OSGB 1936

SCALE
1:5,000 @ A3





Figure

11

26335 Meerdyke Solar Farm

LIDAR Analysis
 Visualisation of Archaeological
 Topography (VAT) & Multi-Hillshade from
 16 directions

Legend

- Site boundary
- - - Study Area, 1km buffer

FOR

Drawn/checked: RSR

DWG no: 06/26335/LIDAR/22/05

AOC Project No.: 26335



(C) AOC Archaeology Group 2022



SYSTEM
 Coordinate System: British National Grid
 Projection: Transverse Mercator
 Datum: OSGB 1936

SCALE
 1:16,000 @ A3





Figure

12

26335 Meerdyke Solar Farm

LIDAR Analysis
 Visualisation of Archaeological
 Topography (VAT) & Multi-Hillshade from
 16 directions

Legend

■ Site boundary

FOR

Drawn/checked: RSR

DWG no: 06/26335/LIDAR/22/05

AOC Project No.: 26335



(C) AOC Archaeology Group 2022



SYSTEM

Coordinate System: British National Grid
 Projection: Transverse Mercator
 Datum: OSGB 1936

SCALE

1:5,000 @ A3

SCALE





26335 Meerdyke Solar Farm
 LiDAR Analysis
 Visualisation of Archaeological
 Topography (VAT) & Multi-Hillshade from
 16 directions

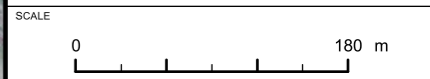
Legend
■ Site boundary

FOR	
Drawn/checked:	RSR
DWG no:	06/26335/LIDAR/22/05
AOC Project No.:	26335



SYSTEM
 Coordinate System: British National Grid
 Projection: Transverse Mercator
 Datum: OSGB 1936

SCALE 1:5,000 @ A3





Plates



Plate 1: Field numbers in the western part of the Site



Plate 2: Field numbers in the eastern part of the Site



Plate 3: View of Field 1 and its northeastern boundary, from the east



Plate 4: View of Field 1 and its southeastern boundary, from the northeast



Plate 5: View of Field 1 and its northwestern boundary, from the northeast



Plate 6: View along the boundary between Fields 1 and 2, from the northwest



Plate 7: View of the L-shaped section of the boundary between Fields 2 and 3, from the southwest



Plate 8: View of the straight section of the boundary between Fields 2 and 3, from the southeast



Plate 9: View of Field 2 and part of its southeastern boundary, from the northeast



Plate 10: View beyond part of the southeastern boundary of Field 2 the from the northwest