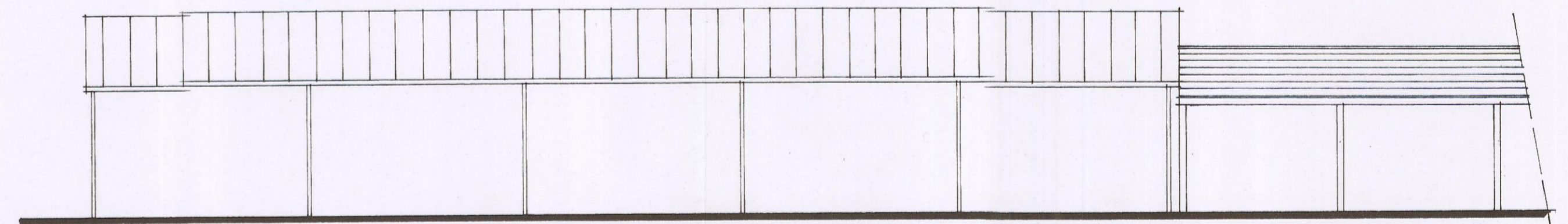


east elevation (to Puxton Lane)



west elevation

EXTERNAL FINISHES

CANOPY EXTENSION

ROOF: Polycarbonate sheeting within aluminium frames

WALLS: Polycarbonate sheeting within aluminium frames to apex gables
"Cambridge" type aluminium post/frame structure

Canopy enclosed (north elevation) with timber paling plinth and lattice topped fence panels as existing

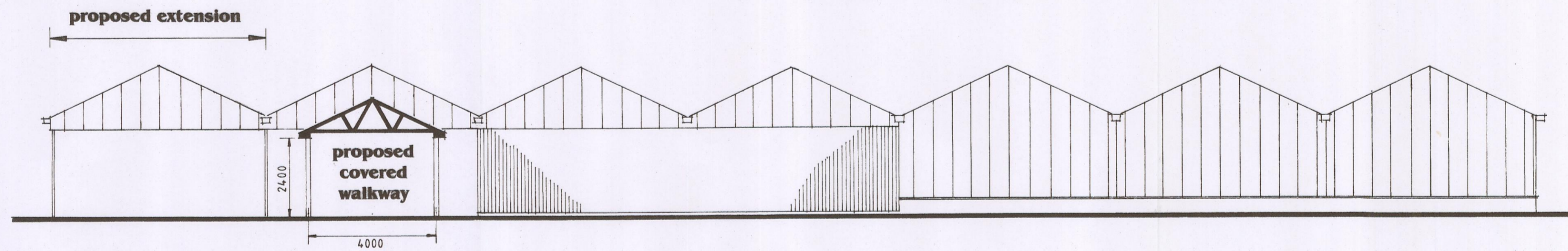
COVERED WALKWAY

ROOF: Pitched gable ended roof with brown mineral felt shingles, preservative stained finish to exposed woodwork

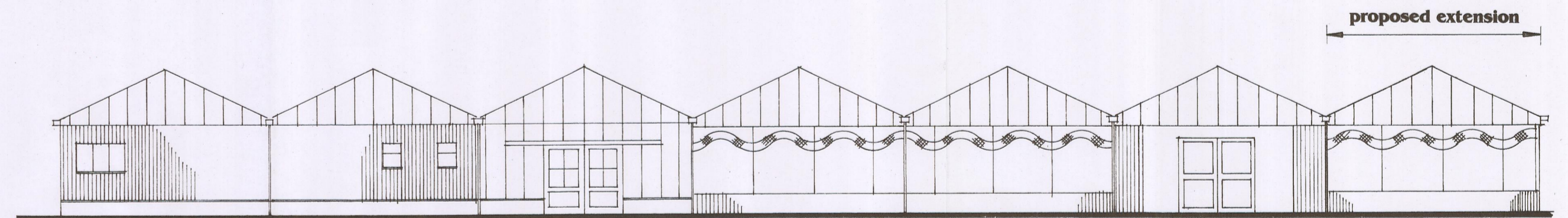
SUPPORT: Timber posts with preservative stained finish

POSTS:

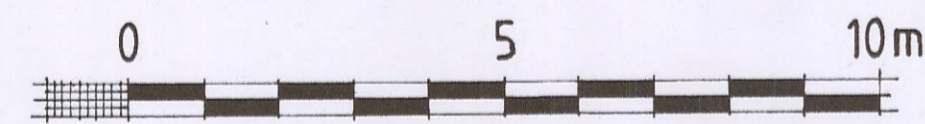
NB: Structure erected in accordance with Structural Engineers design details including wind bracing between posts as required



south elevation

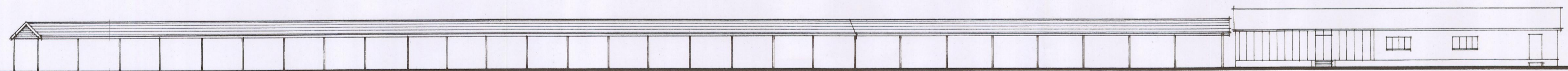


north elevation (to Bristol Road)

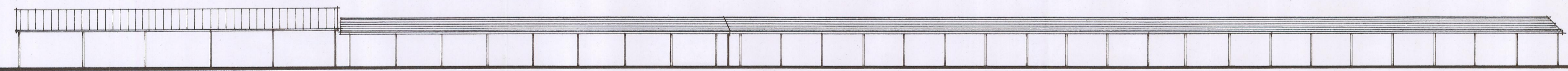


scale bar

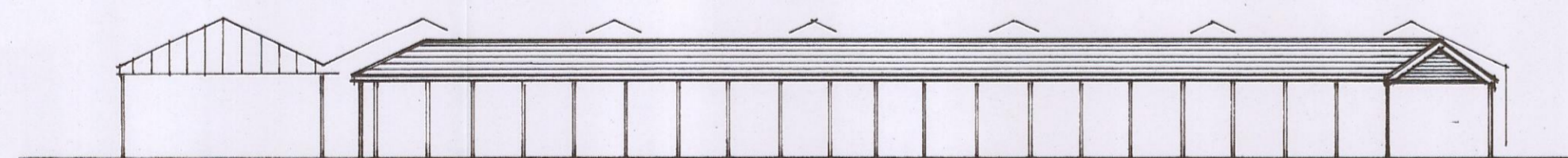
1/100



east elevation (to Puxton Lane)



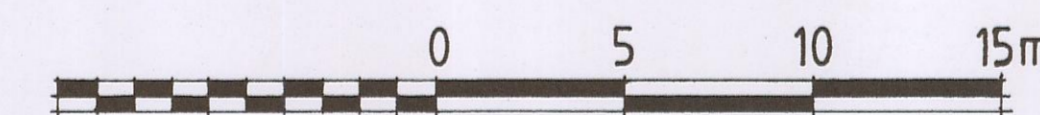
west elevation



south elevation

Proposed elevations showing covered walkway

scale : 1/200



scale bar

1/200

GARDEN PARK

(AVON PLANTS)

Puxton Lane, HEWISH
Weston super Mare BS24 6TA

Proposed single bay retail canopy extension, roofing over of walkway, and provision of new disabled parking area

Proposed ELEVATIONS

Scale : 1/100 & 1/200

Dwg No : 2309/17