

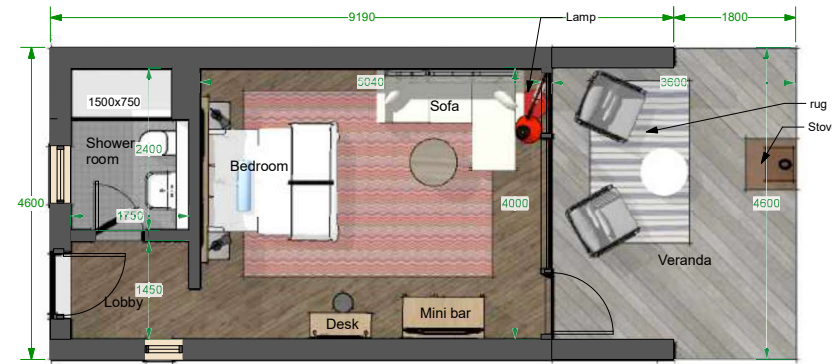
5.0 PROPOSED SCHEME

5.10 PODS

In order to provide a variety of accommodation types, it is proposed to install 6 No accommodation pods that are positioned to offer south facing views over the Water Meadows and Flood Dyke.

The pods will be fabricated off site and positioned to sit within the landscape. These provide Bedroom accommodation along with a small living area and external terrace area.

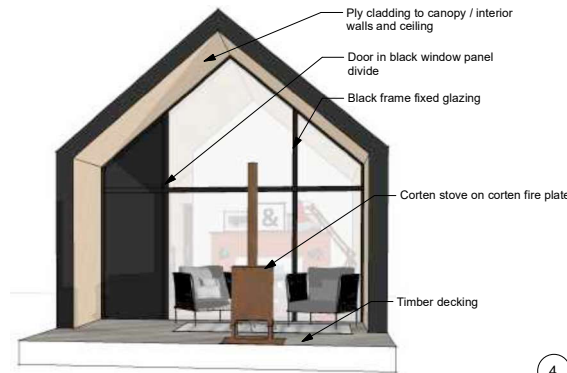
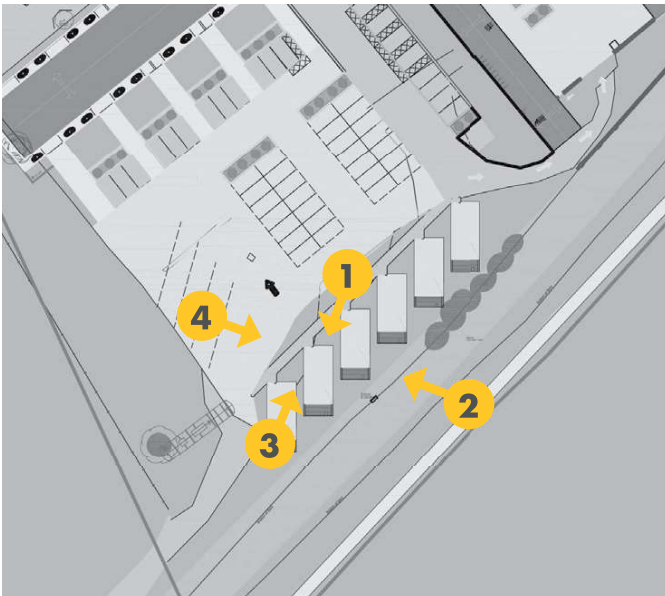
BIKE AND BOOT - ACCOMMODATION PODS, OPTION A



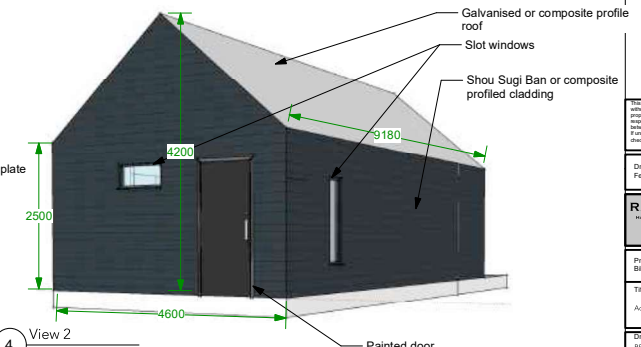
1 Proposed Plan
Scale: 1:50



2 Option A - 3D Interior
NTS



3 View 1
NTS



4 View 2
NTS

PURPOSE OF DRAWING IS 'DESIGN INTENT' FOR INFORMATION ONLY.
PLEASE CONTACT RML TEAM IF UNSURE AND LAISE WITH SITE TEAM TO WORK COLLABORATIVELY.

REVISION	DESCRIPTION	DATE
A	General Amendment	21/12/21
B	General Amendment	11/01/22

The drawing must not be copied, used or relied on for any purpose without the prior written consent of Rachel McLane. It is the responsibility of the user to ensure that the drawing is used in accordance with the terms of the drawing and to ensure that the drawing is used in accordance with the terms of the drawing and to ensure that the drawing is used in accordance with the terms of the drawing.

Drawing status:
Feasibility

RACHEL MCLANE LTD
RACHEL MCLANE ARCHITECTS
RACHEL MCLANE ARCHITECTS
RACHEL MCLANE ARCHITECTS
RACHEL MCLANE ARCHITECTS

Project:
Bike and Boot
Title:
Accommodation Pods, Option A

Drawn by:	Checked:	File name/No:
RS		416
Drawing Number:	Rev:	Scale:
BBMF_3_77_001	B	1:50/BA3
	Date:	
	09/12/21	

5.0 PROPOSED SCHEME

5.11 ACCESSIBILITY

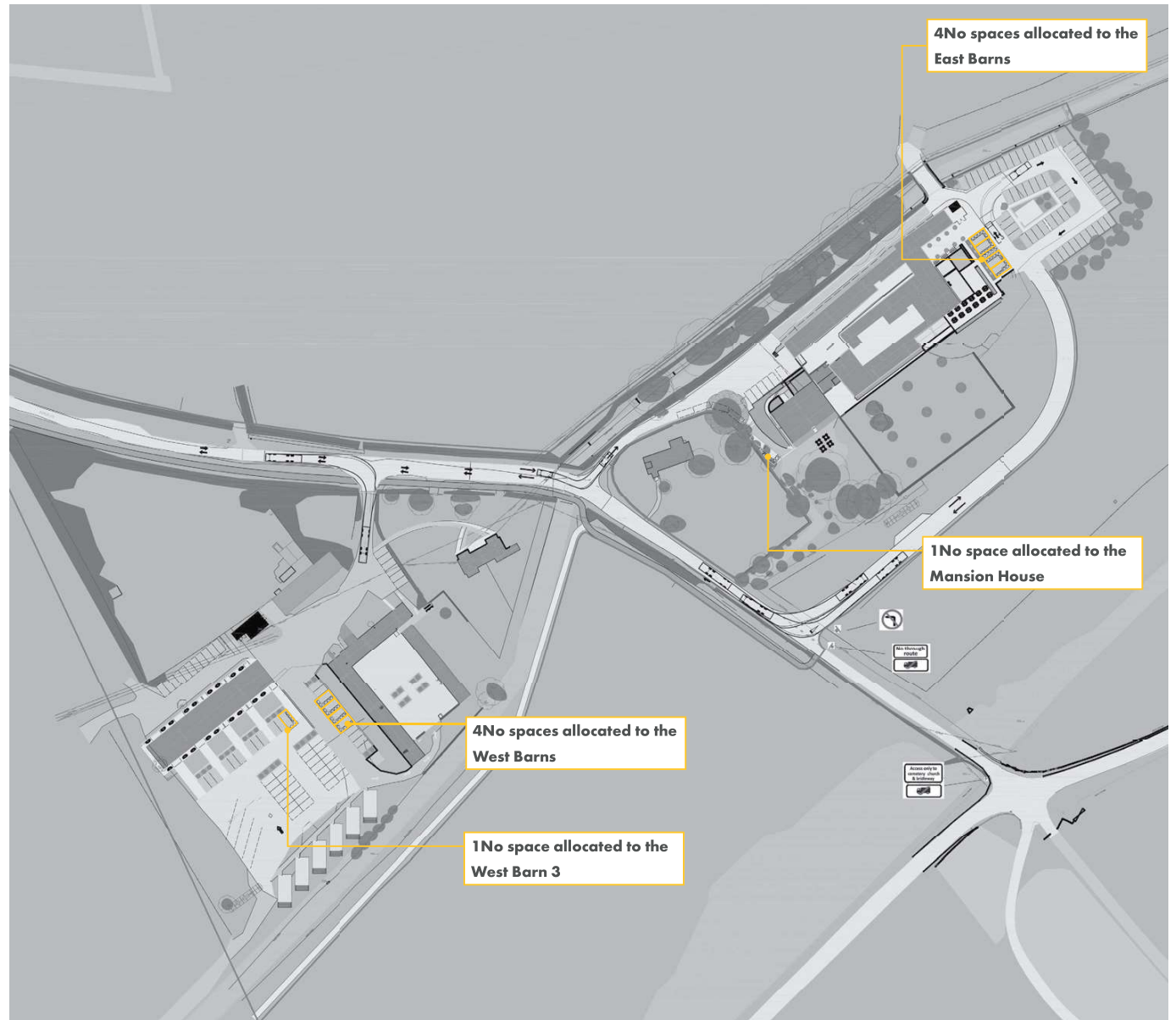
PROPOSED SITE PLAN

The site plan has developed to provide a distribution of accessible parking bays across the site to ensure that guests have various options available for the type of accommodation on offer.

To the East Barns, 4 spaces are allocated directly adjacent to the main reception area and Bareca.

An accessible space is located directly adjacent to the Mansion House to serve the accessible room and the Retreat.

To the West Barns, 5 spaces have been allocated directly adjacent to the West Barns buildings to serve the accessible rooms within the West Barns, the new build west barn and the cottages.



Seven Harrogate
Clarendon House
Victoria Avenue
Harrogate
North Yorkshire
HG1 1JD

Tel: 01423 709 807

Seven London
24 Greville Street
London
EC1N 8SS

Tel: 0203 036 0691

Seven Manchester
Unit 1.3 Waulk Mill
51 Bengal Street
Ancoats
Manchester
M4 6LN

Tel: 0161 236 5655

Seven Wales
Y Neuadd Lwyd
Church Street
Dolwyddelan
Conwy
LL25 0SJ

Tel: 07772 819 425

seven.

Company Registration No. 5804088
Website: www.sevenarchitecture.co.uk

RIBA 
Chartered Practice