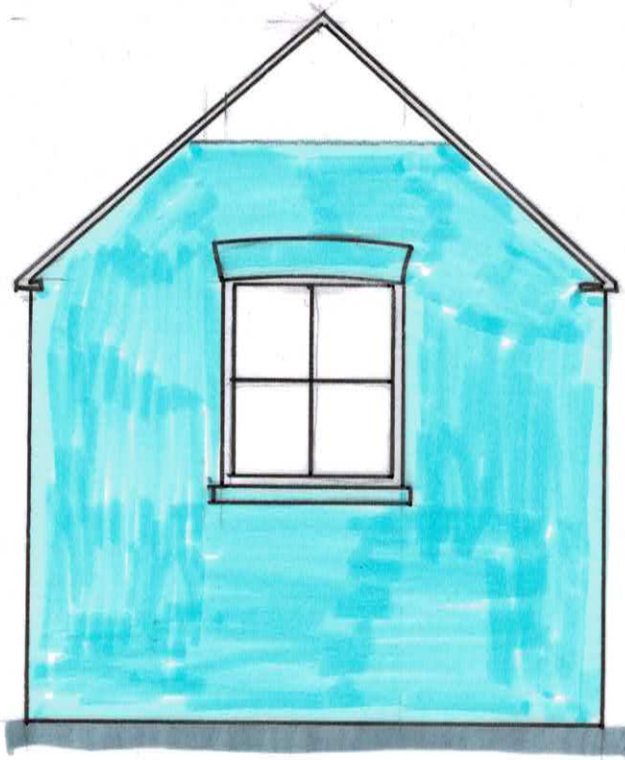


SCHOOL HOUSE, HILL RIDWARE

IT IS PROPOSED TO INSTALL INSULATED DRY LINING
TO THE INTERNAL SURFACES OF THE AREAS COLOURED BLUE.
SEE WRITTEN STATEMENT FOR FURTHER DETAILS.



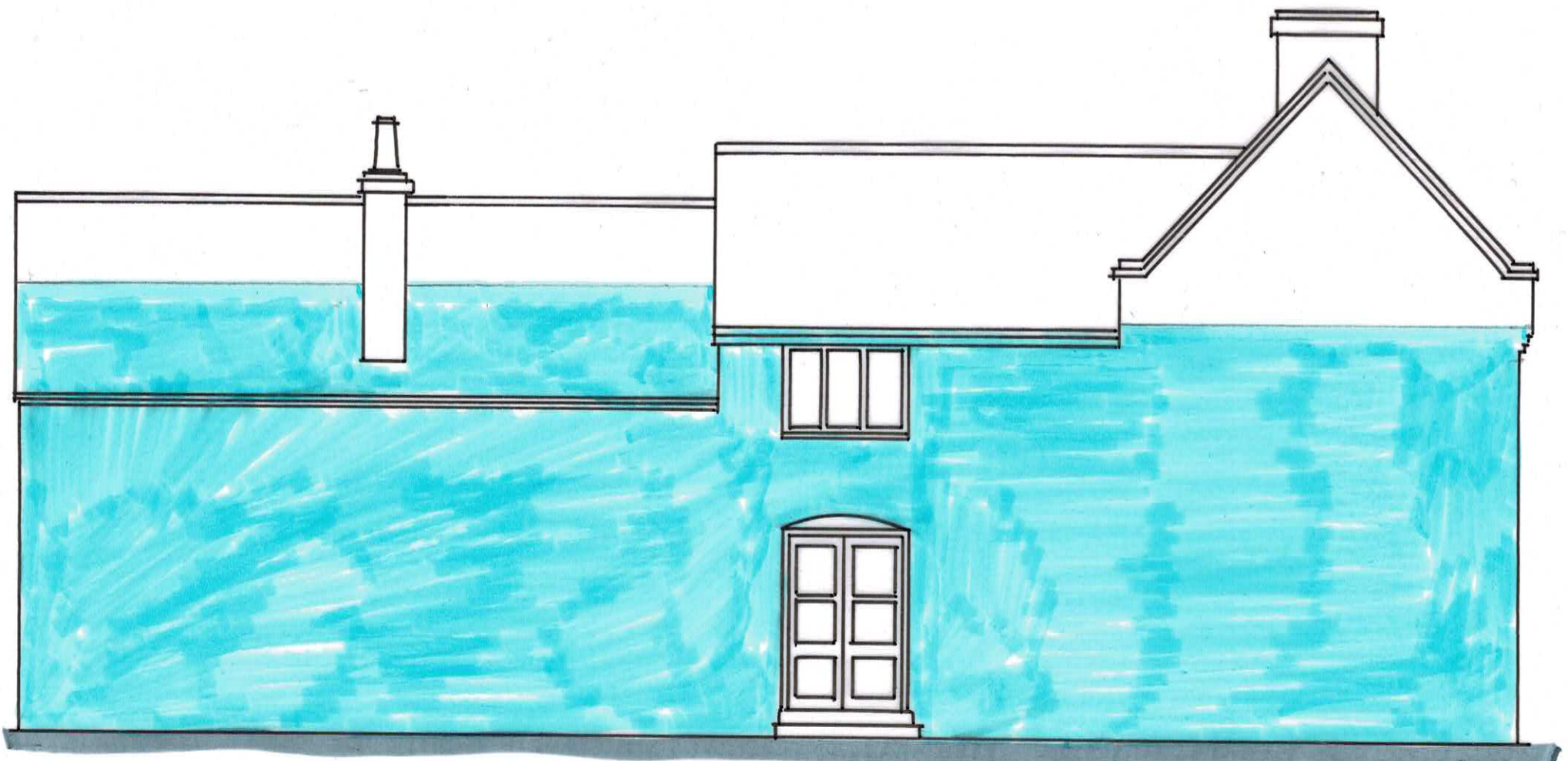
SOUTH ELEVATION 1:50



EAST ELEVATION 1:50



WEST ELEVATION 1:50



NORTH ELEVATION 1:50