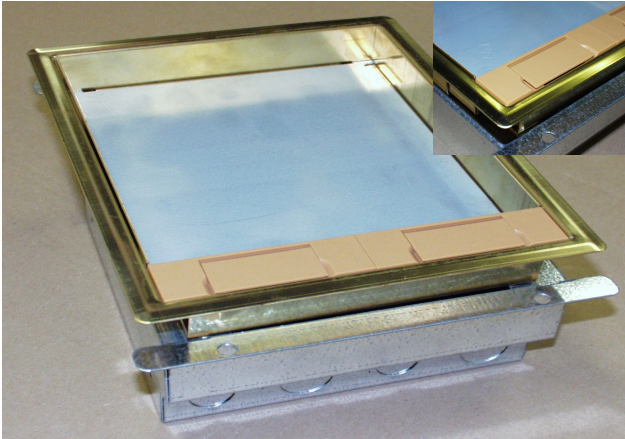


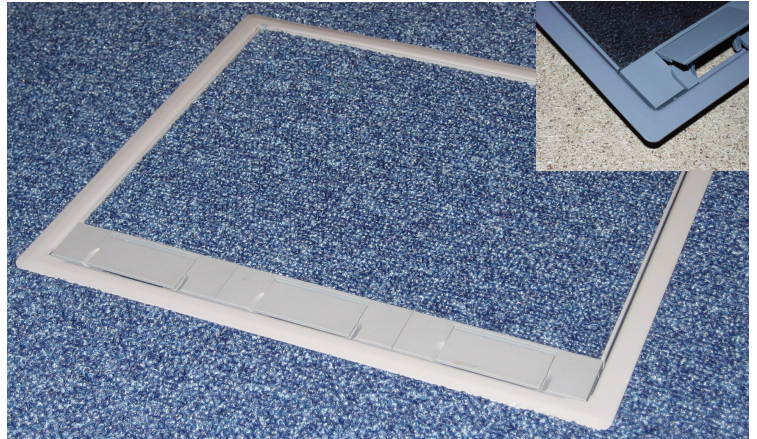
Typical Assemblies & Arrangements

CMS produce a standard range of Trap & Trim arrangements a typical selection of which are shown below.

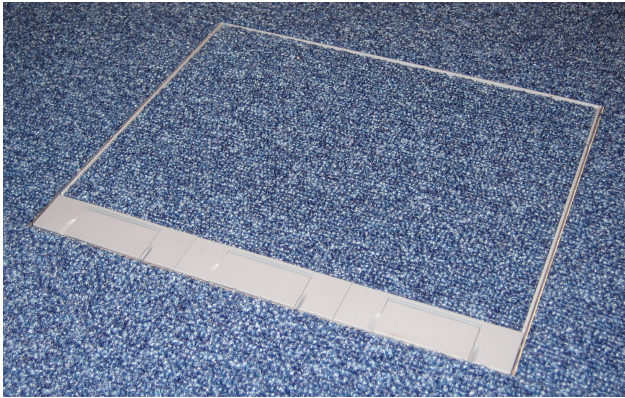
For further detailed information please refer to our Technical Product Manual.



2c Full Box assembly shown, with Surround Trim [mill finished brass type], 20mm recess Trap and light brown moulded nylon cable entry/lifting handle flaps.



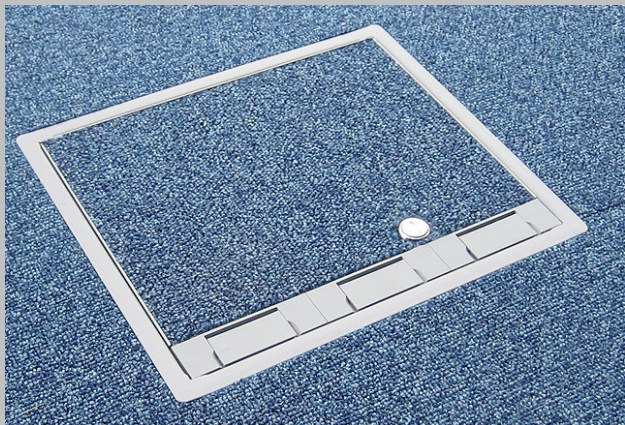
3c Full Box assembly shown, with Surround Trim [moulded plastic moulded type], 6mm recess Trap and grey moulded nylon cable entry/lifting handle flaps.



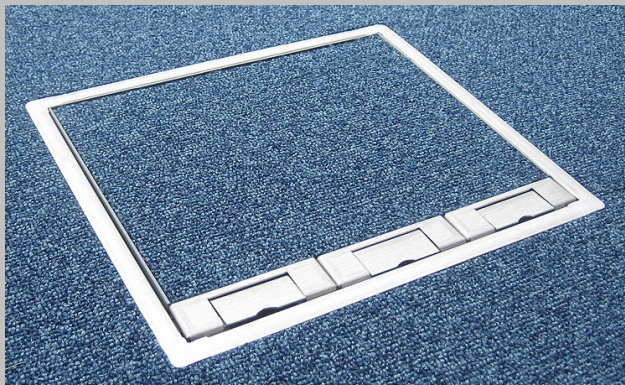
3c Full Box assembly shown, with Edge Trim [stainless steel type], 6mm recess Trap and grey moulded nylon cable entry/lifting handle flaps.



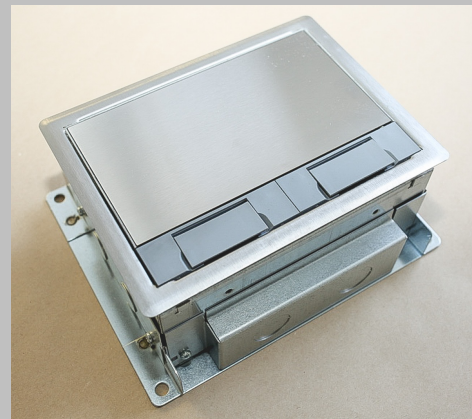
1/2c Mini Box assembly shown, with Edge Trim [stainless steel type], 6mm recess Trap and grey moulded nylon cable entry/lifting handle flap.



3c Full Box assembly shown, with Surround Trim [coated steel type], 6mm recess Trap, grey moulded nylon cable entry/lifting handle flaps and a keyed barrel lock [lock option only available when a 6mm recess or flush-plate type Trap is utilised].



3c Full Box assembly shown, with Surround Trim [brushed stainless steel type], 6mm recess Trap with brushed stainless steel cable entry/lifting handle flaps.



1/2/3c Mini Box assembly shown, with Surround Trim [brushed stainless steel type], heavy-duty stainless steel flush-plate Trap and grey moulded nylon cable entry/lifting handle flaps.



1/2c Mini Box assembly shown, with Edge Trim [stainless steel type], 6mm recess Trap and brushed stainless steel type cable entry/lifting handle flap.