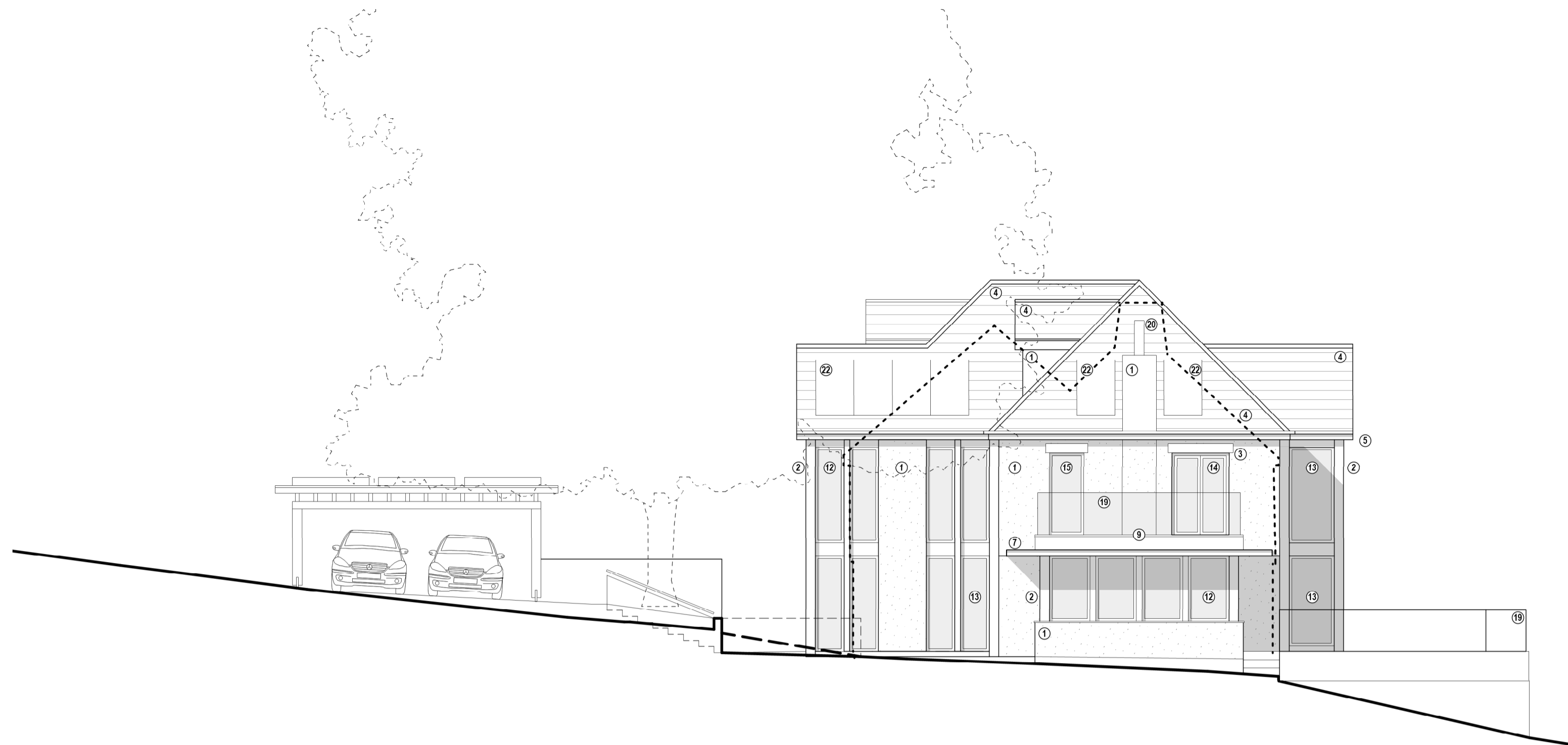
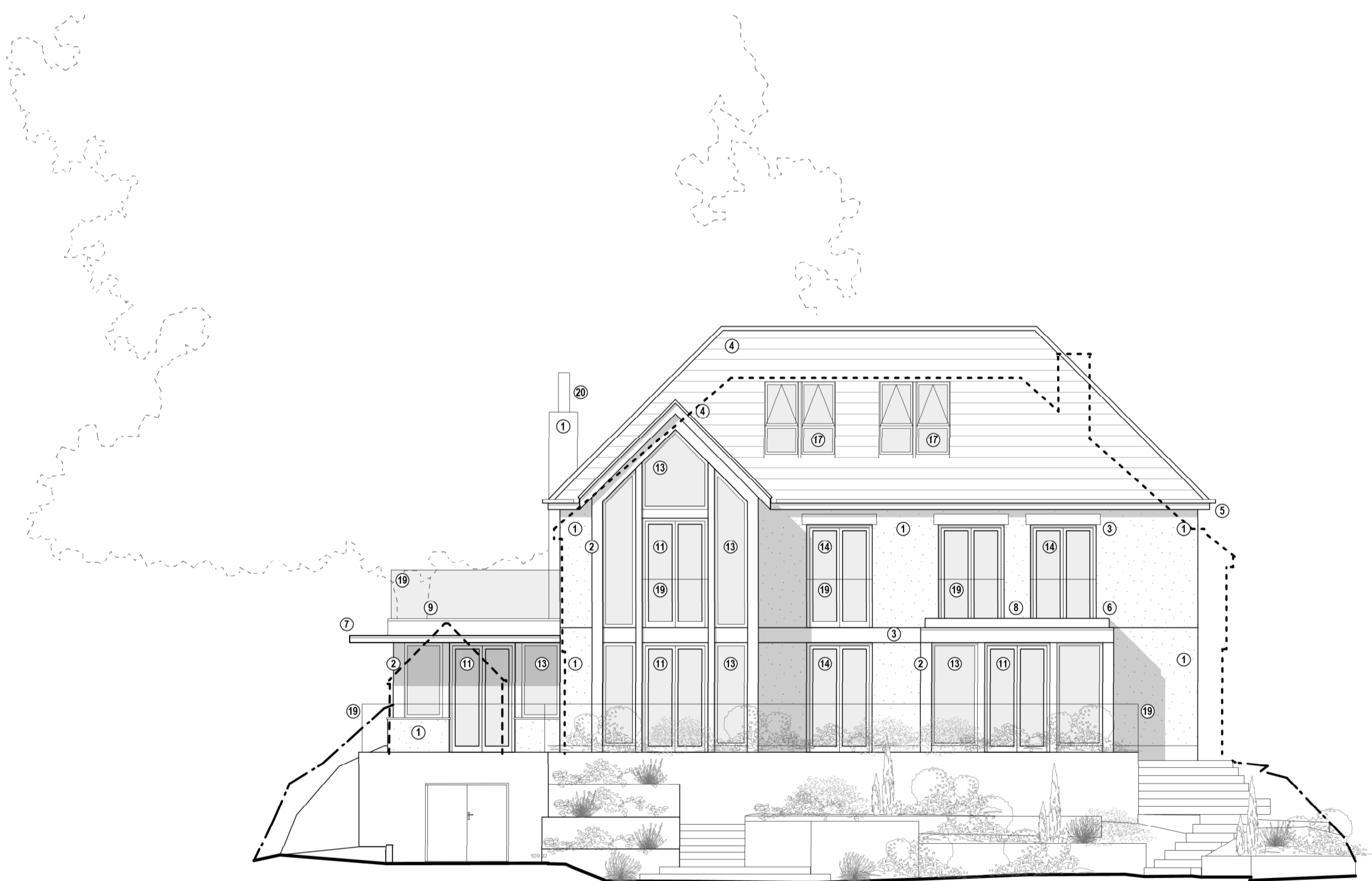




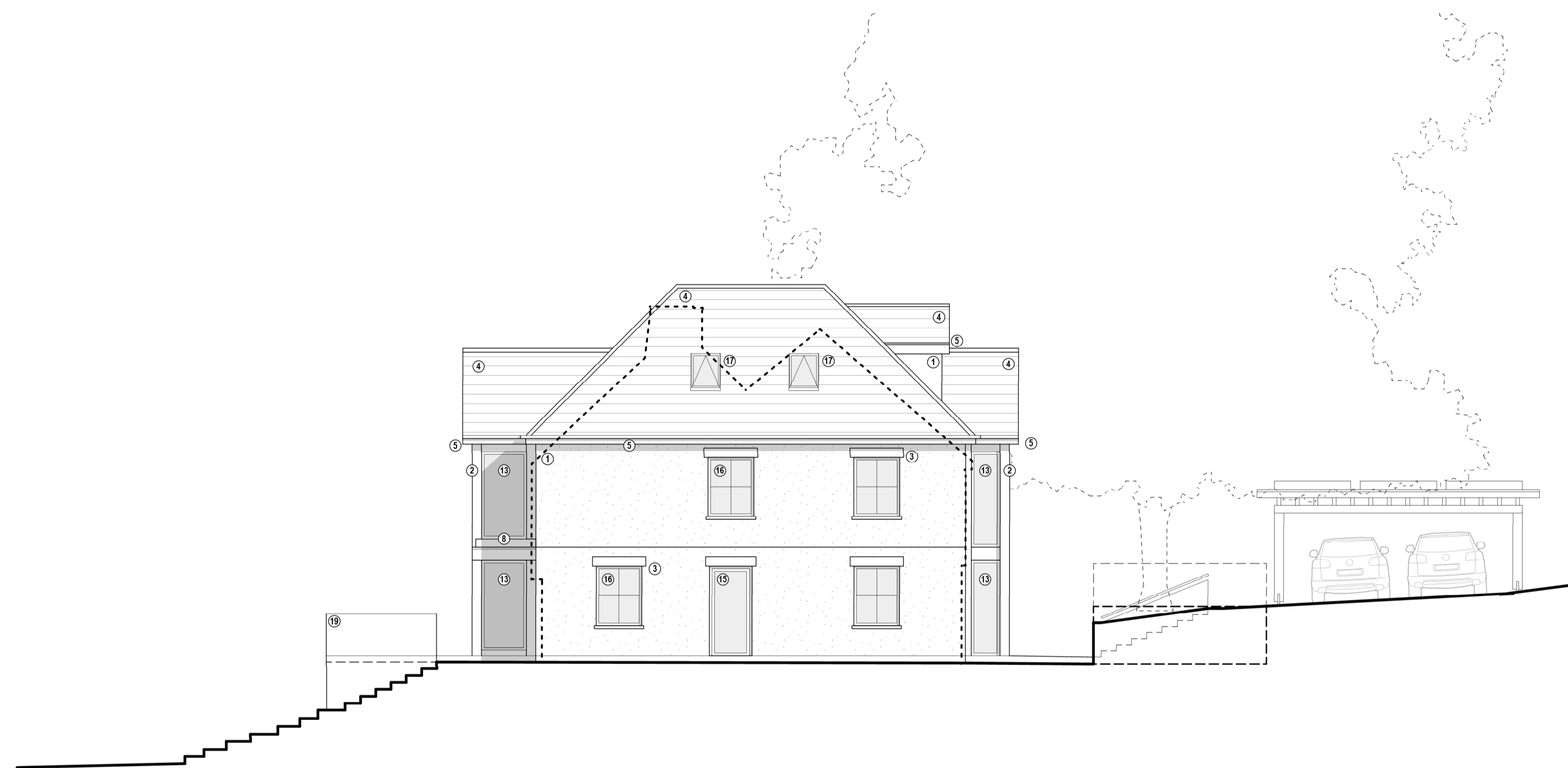
1 Proposed Front Elevation (West)
Scale 1:100



2 Proposed Side Elevation (South)
Scale 1:100



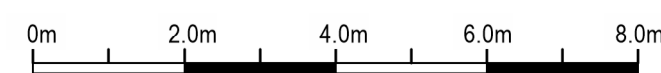
3 Proposed Rear Elevation (East)
Scale 1:100



4 Proposed Side Elevation (North)
Scale 1:100

Material Legend

- 1. Render
- 2. Oak frame
- 3. Oak lintel
- 4. Clay plain roof tiles
- 5. Painted fascias/soffits & aluminium rainwater goods
- 6. Metal flashings
- 7. Rendered canopy with zinc flashings
- 8. Single ply membrane flat roof with pebble covering
- 9. Single ply membrane flat roof with decking to form roof terrace
- 10. Timber clad front door
- 11. Timber framed double/triple glazed french doors
- 12. Timber framed double/triple glazed windows
- 13. Timber framed/frameless double/triple glazed fixed window
- 14. Aluminium framed double/triple glazed french doors
- 15. Aluminium framed double/triple glazed door
- 16. Aluminium framed double/triple glazed casement windows
- 17. Aluminium framed double/triple glazed recessed pitched rooflight
- 18. Electric operated openable double/triple glazed flat rooflight
- 19. Framless glass balustrade
- 20. Metal chimney flue
- 21. Oak frame carport
- 22. Photovoltaic panels set flush within pitched roof
- 23. Photovoltaic panels to carport flat roof
- 24. Replacement and new retaining wall and planters
- 25. Stone terrace
- 26. Permeable resin bound gravel driveway



Rev:	Date:	Description:	Project:	Great Oaks, Newtown Common
A	15.11.2022	Issued for Information	Client:	Newbury
	22.11.2022	Issued for Planning	Dwg no:	2203 / PL.04
			Drawing:	Proposed Elevations
			Date:	November 2022
			Scale:	1:100 @ A1
			C:	LH
			D:	PSLH
			Rev:	A
			T +44 (0)20 8332 99 -66 F -91 W www.3s-ad.com E info@3s-ad.com	
			Parishot House, 3 Kew Road, Richmond upon Thames, Surrey, TW9 2PR	