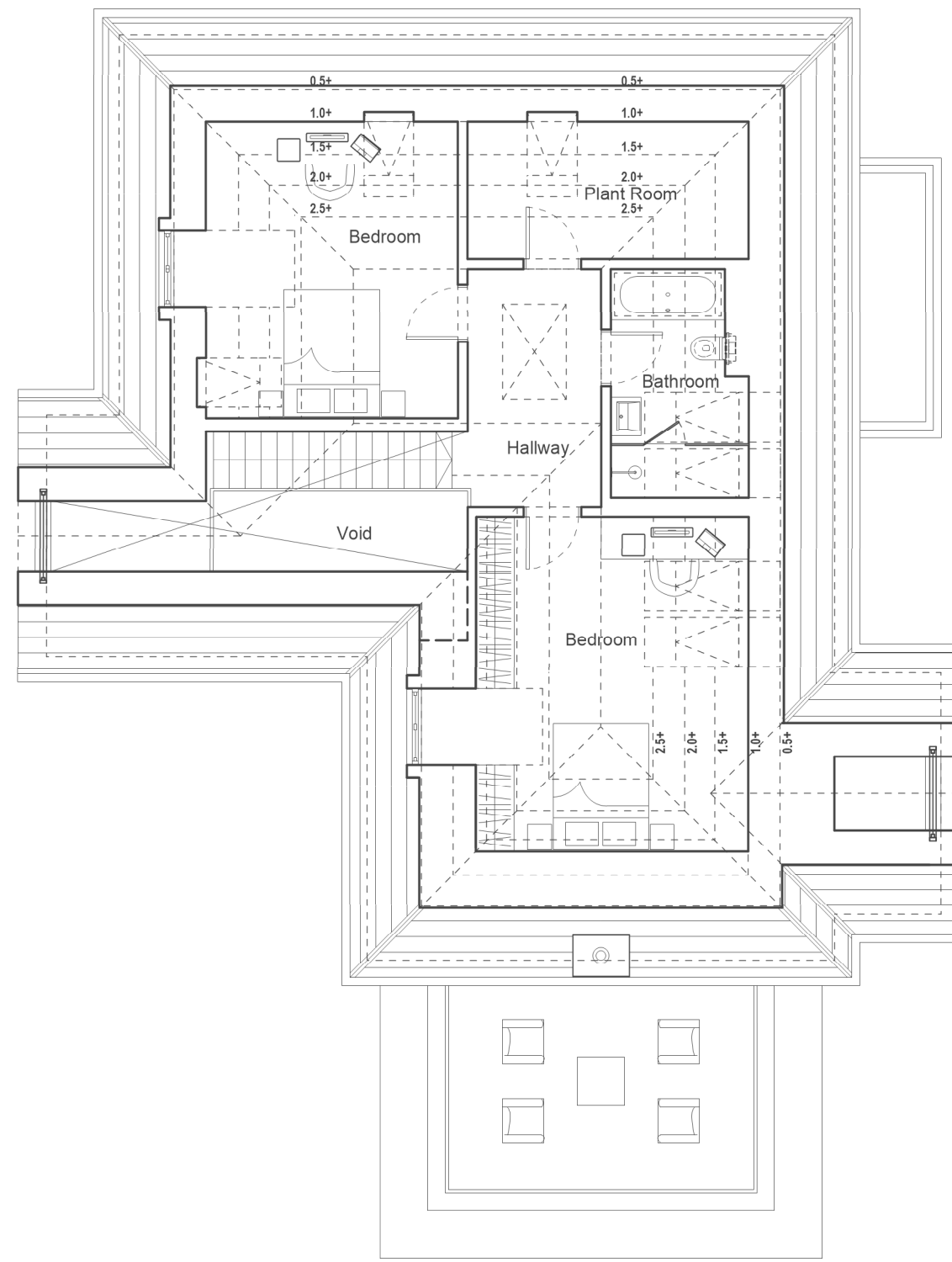
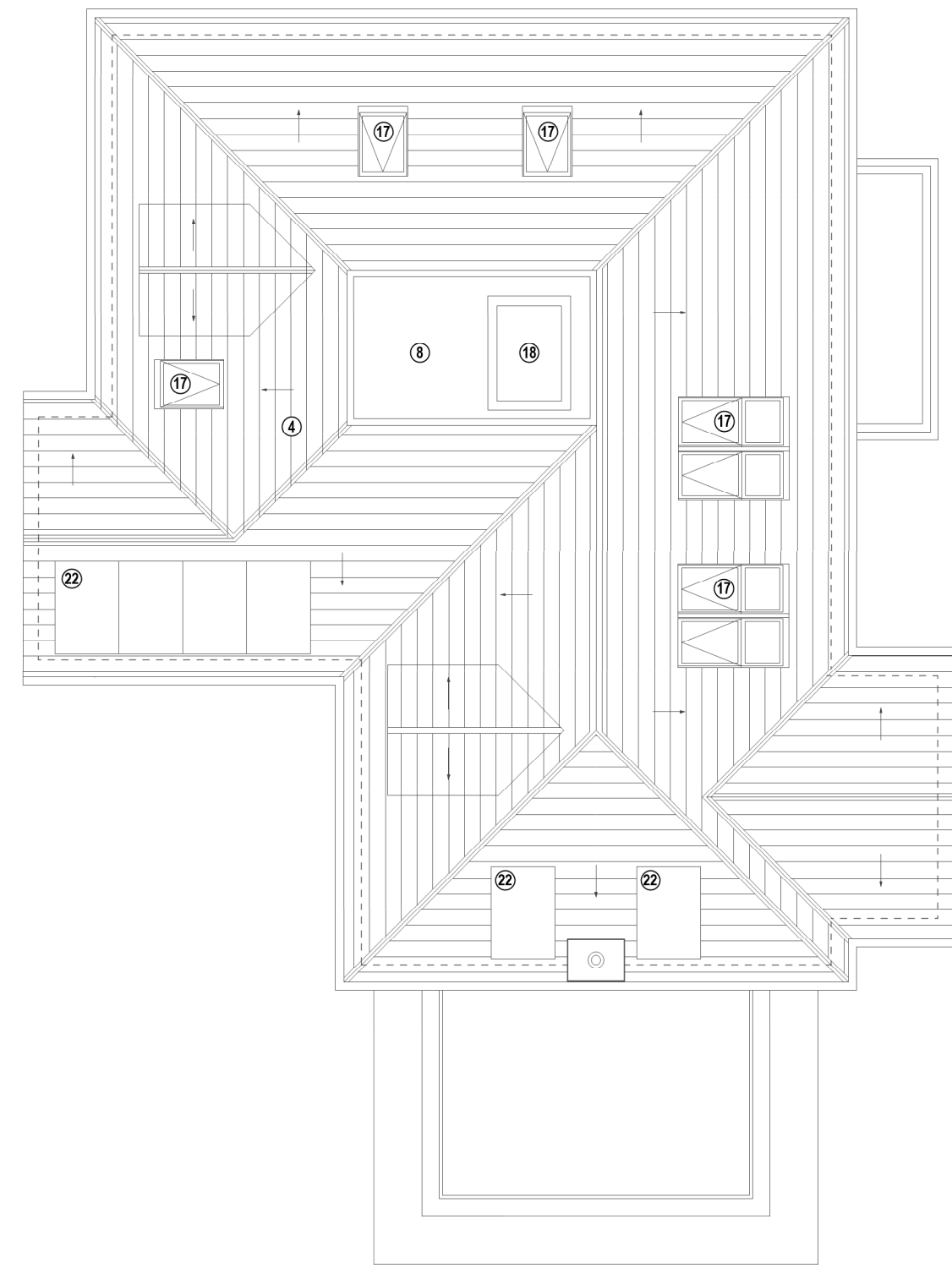


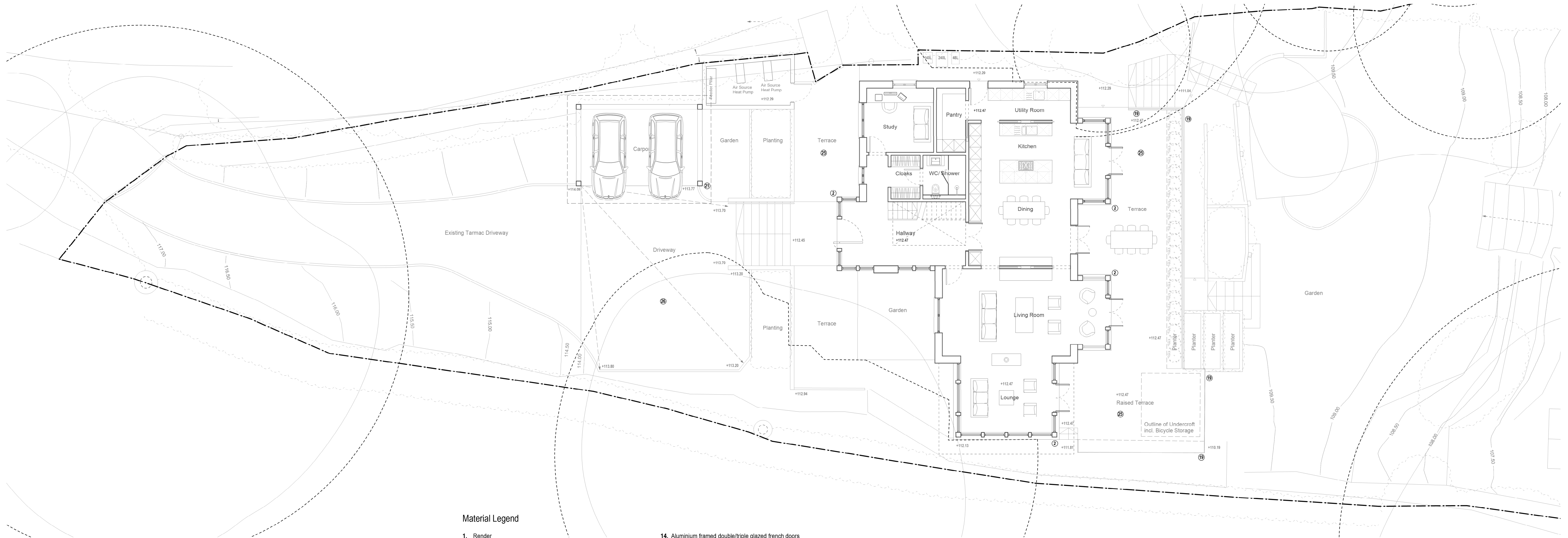
2 Proposed First Floor Plan
Scale 1:100



3 Proposed Second Loft Floor Plan
Scale 1:100



4 Proposed Roof Plan
Scale 1:100

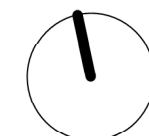


Material Legend

1. Render
2. Oak frame
3. Oak lintel
4. Clay plain roof tiles
5. Painted fascias/soffits & aluminium rainwater goods
6. Metal flashings
7. Rendered canopy with zinc flashings
8. Single ply membrane flat roof with pebble covering
9. Single ply membrane flat roof with decking to form roof terrace
10. Timber clad front door
11. Timber framed double/triple glazed french doors
12. Timber framed double/triple glazed windows
13. Timber framed/frameless double/triple glazed fixed window

14. Aluminium framed double/triple glazed french doors
15. Aluminium framed double/triple glazed door
16. Aluminium framed double/triple glazed casement windows
17. Aluminium framed double/triple glazed recessed pitched rooflight
18. Electric operated openable double/triple glazed flat rooflight
19. Framless glass balustrade
20. Metal chimney flue
21. Oak frame carport
22. Photovoltaic panels set flush within pitched roof
23. Photovoltaic panels to carport flat roof
24. Replacement and new retaining wall and planters
25. Stone terrace
26. Permeable resin bound gravel driveway

0m 2.0m 4.0m 6.0m 8.0m



1 Proposed Ground Floor Plan
Scale 1:100

PLANNING

Rev:	Date:	Description:	Project:	Great Oaks, Newtown Common Newbury	Dwg no:	2203 / PL.03	Drawing:	Proposed Plans	Date:	November 2022	Scale:	1:100@A1	C	D	PS/LH	Rev:	A	T +44 (0)20 8332 99 -66 F -91 W www.3s-ad.com E info@3s-ad.com Parlshot House, 5 Kew Road, Richmond upon Thames, Surrey, TW9 2PR
	15.11.2022	Issued for Information																

3s architects
interiors
commercial