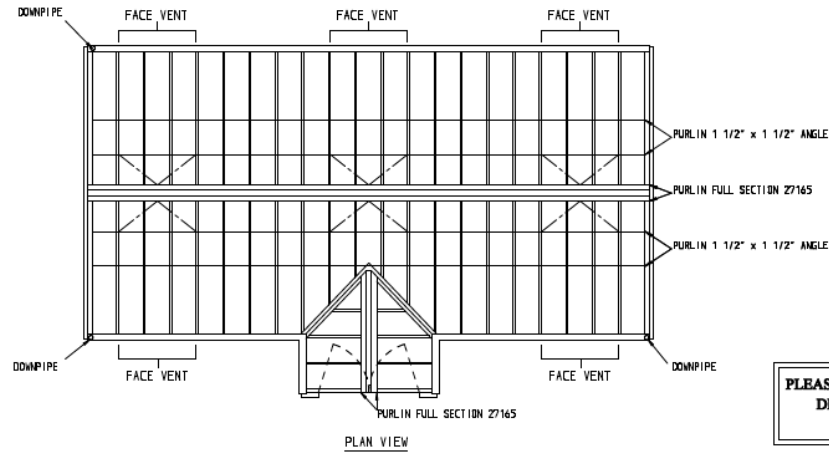
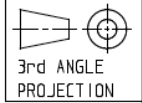


GREENHOUSE - PROPOSED

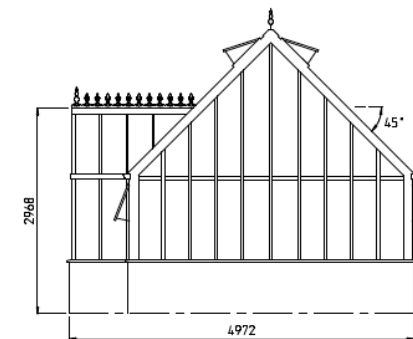
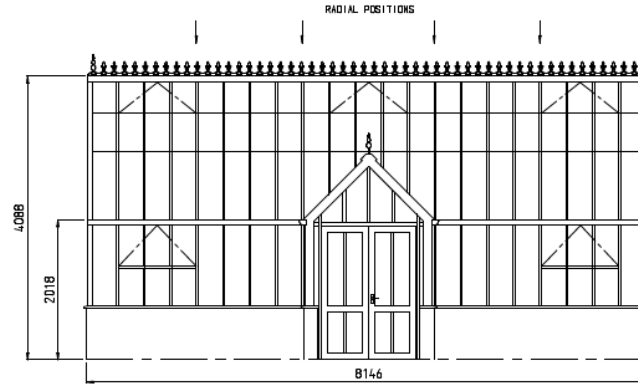
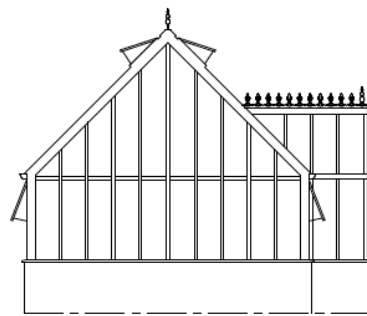
Erection of greenhouse and other associated works

Melville Cottage, Great Rissington



PLEASE NOTE: THIS IS A PROVISIONAL
DRAWING - DO NOT BUILD TO
THIS DRAWING

PLEASE NOTE: THIS IS A PROVISIONAL
DRAWING - DO NOT BUILD TO
THIS DRAWING



PLEASE NOTE: THIS IS A PROVISIONAL DRAWING AND IS NOT TO BE USED FOR CONSTRUCTION PURPOSES

GENERAL NOTES:
 STRUCTURE BUILT IN ALUMINIUM ALLOY
 POLYESTER POWDER COATED
 ROOF VENTS OPERATED BY Nk 7 AUTOVENTS
 VERTICAL FACE VENTS OPERATED BY MANUALLY
 GLAZED IN TOUGHENED SAFETY GLASS
 ALUMINIUM SWING DOORS COMPLETE WITH LOCKS
 G808 ALUMINIUM GUTTERS
 COMPLETE WITH CAST CRESTING AND FINIALS

DESCRIPTION:
 PROVISIONAL
 GENERAL ARRANGEMENT DRAWING
 VICTORIAN MANOR GLASSHOUSE

DRAWN: DPB		MODIFICATION: DPB		CHECKED: DPB	
DATE: 18.10.19		SCALE: 1:50			

HARTLEY BOTANIC LIMITED
 Greenfield, Dishes, Lancashire, OL3 7AG.
 Tel: 01457 821958 Fax: 01457 821967