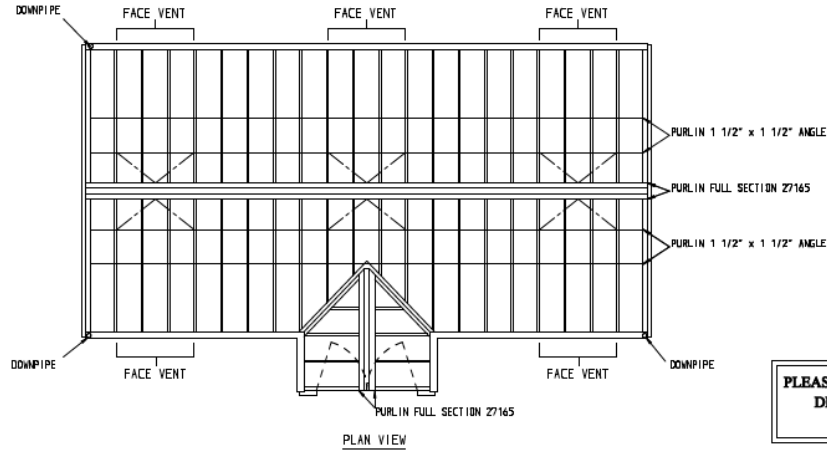
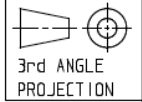


GREENHOUSE - PROPOSED

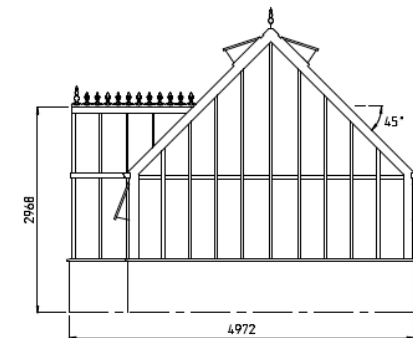
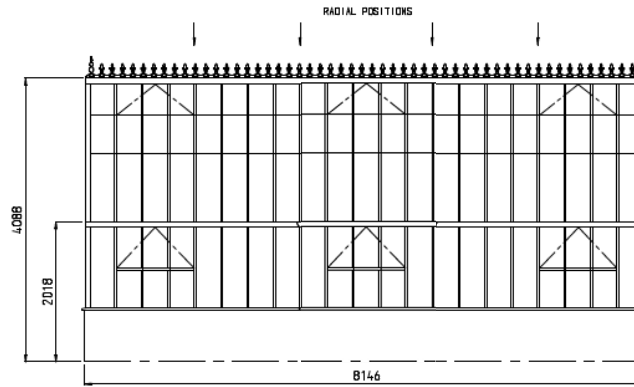
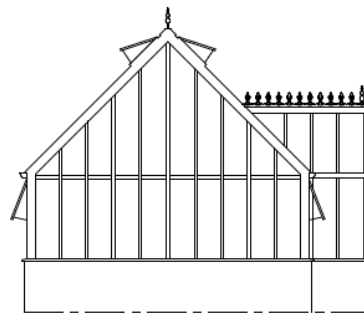
Erection of greenhouse and other associated works

Melville Cottage, Great Rissington



PLEASE NOTE: THIS IS A PROVISIONAL
DRAWING - DO NOT BUILD TO
THIS DRAWING

PLEASE NOTE: THIS IS A PROVISIONAL
DRAWING - DO NOT BUILD TO
THIS DRAWING



PLEASE NOTE: THIS IS A PROVISIONAL DRAWING AND IS NOT TO BE USED FOR CONSTRUCTION PURPOSES

GENERAL NOTES:
 STRUCTURE BUILT IN ALUMINIUM ALLOY
 POLYESTER POWDER COATED
 ROOF VENTS OPERATED BY Mk 7 AUTOVENTS
 VERTICAL FACE VENTS OPERATED BY MANUALLY
 GLAZED IN TENUIGENED SAFETY GLASS
 ALUMINIUM SWING DOORS COMPLETE WITH LOCKS
 DECE ALUMINIUM GUTTERS
 COMPLETE WITH CAST CRESTING AND FINIALS

DESCRIPTION:
 PROVISIONAL
 GENERAL ARRANGEMENT DRAWING
 VICTORIAN MANOR GLASSHOUSE

HARTLEY BOTANIC LIMITED
 Greatfield, Oldham, Lancashire, OL3 7AG.
 Tel: 01457 821958 Fax: 01457 821967

DATE	SCALE	DRAWN	MODIFICATION	CHECKED
18.10.19	1:50	DPB		DPB