

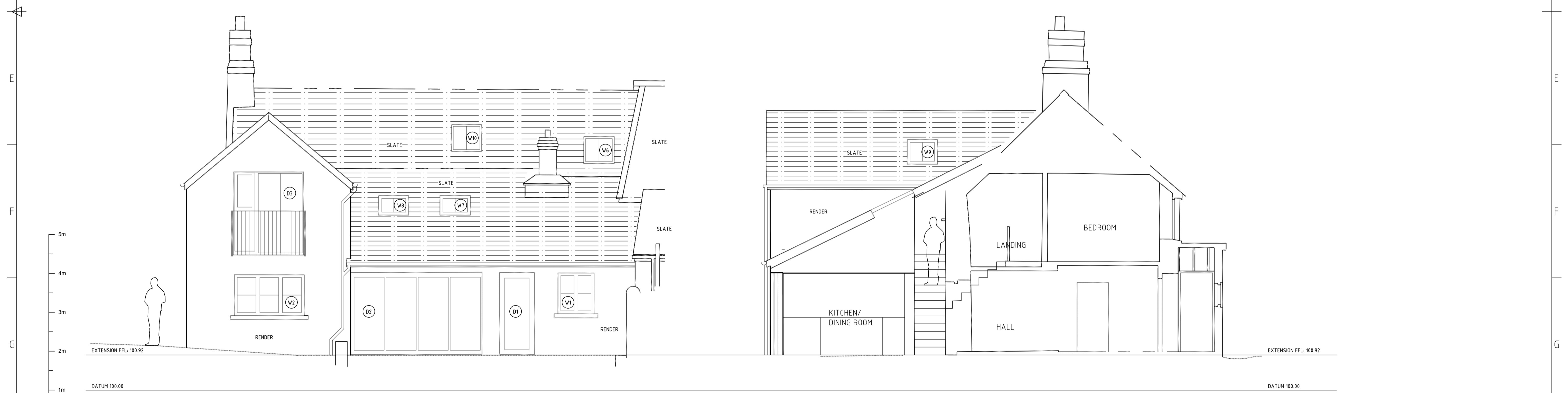
RevNo	Revision note	Date	Signature	Checked
01	Non-Material Alteration to approved plans.	18/12/22	TB	

Notes:
Existing approved plan Document Number 1226/02D



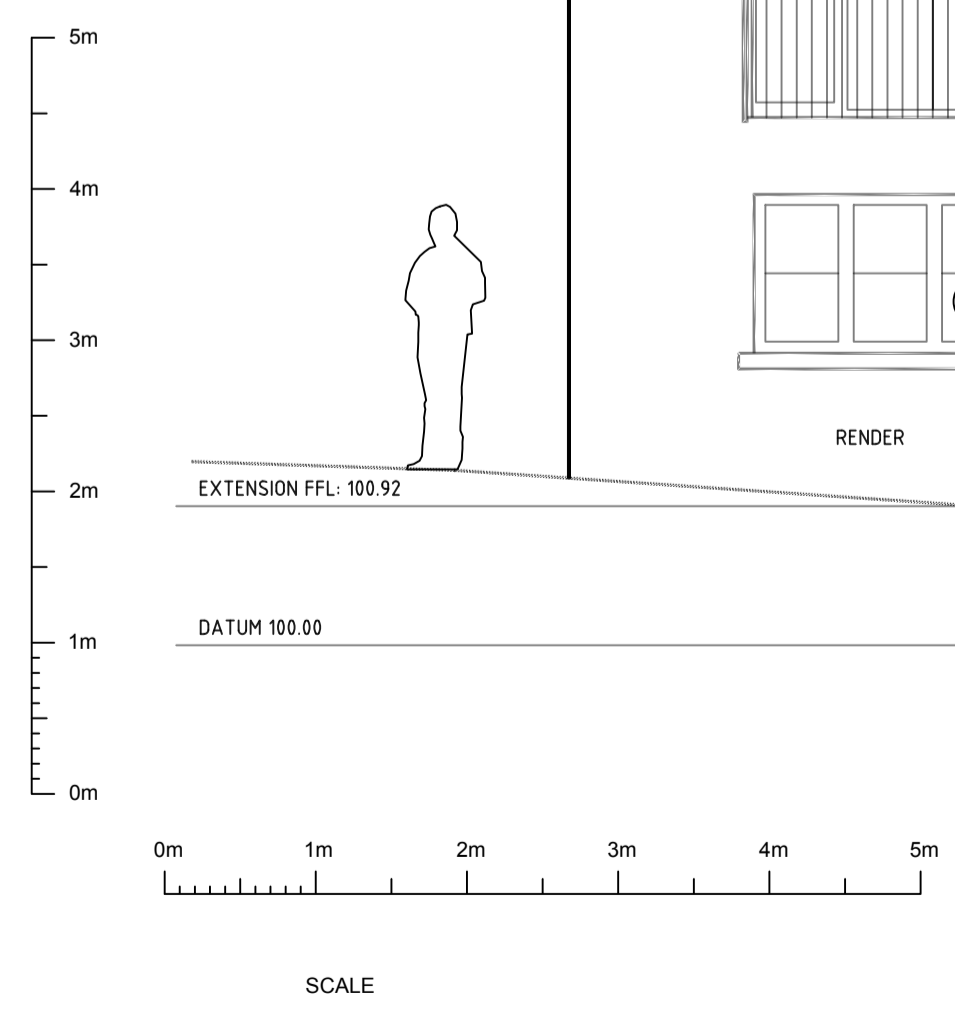
PROPOSED SOUTH ELEVATION

PROPOSED EAST ELEVATION



PROPOSED NORTH ELEVATION

PROPOSED WEST ELEVATION/SECTION



Azimuth Engineering and Consultancy T Biggs EngTech AMMR&ST IMET Holly Cottage, Monkleigh, Bideford, EX39 6JT T. +44 (0)1796920835; E. tbiggs.ace@outlook.com					
Drawn by TB	Checked by	Approved by	Filename 2022HCEX	Date 18/12/22	Scale 1:50 @A1
Proposed Elevations & Section View		Holly Cottage Extension 2022HCEX_Proposed Elev			
		Revision 01	Sheet 3 of 3		