

Inset plan showing location of LAP:



Proposed LAP Equipment:



- 1. Supplier: Wicksteed  
Product: Balance Logs (Half Round)  
Dimensions: Width - min.300mm / max.400mm  
Length - 2000mm  
Installation: Logs to be set flush with the ground
- 2. Supplier: Wicksteed  
Product: 10x Stepping Logs (Cross Hatched)  
Dimensions: Width - min.150mm / max.200mm  
Height - min.150mm / max.400mm with approx.150mm buried in the ground  
\*Logs to be installed over a total length of 3000mm



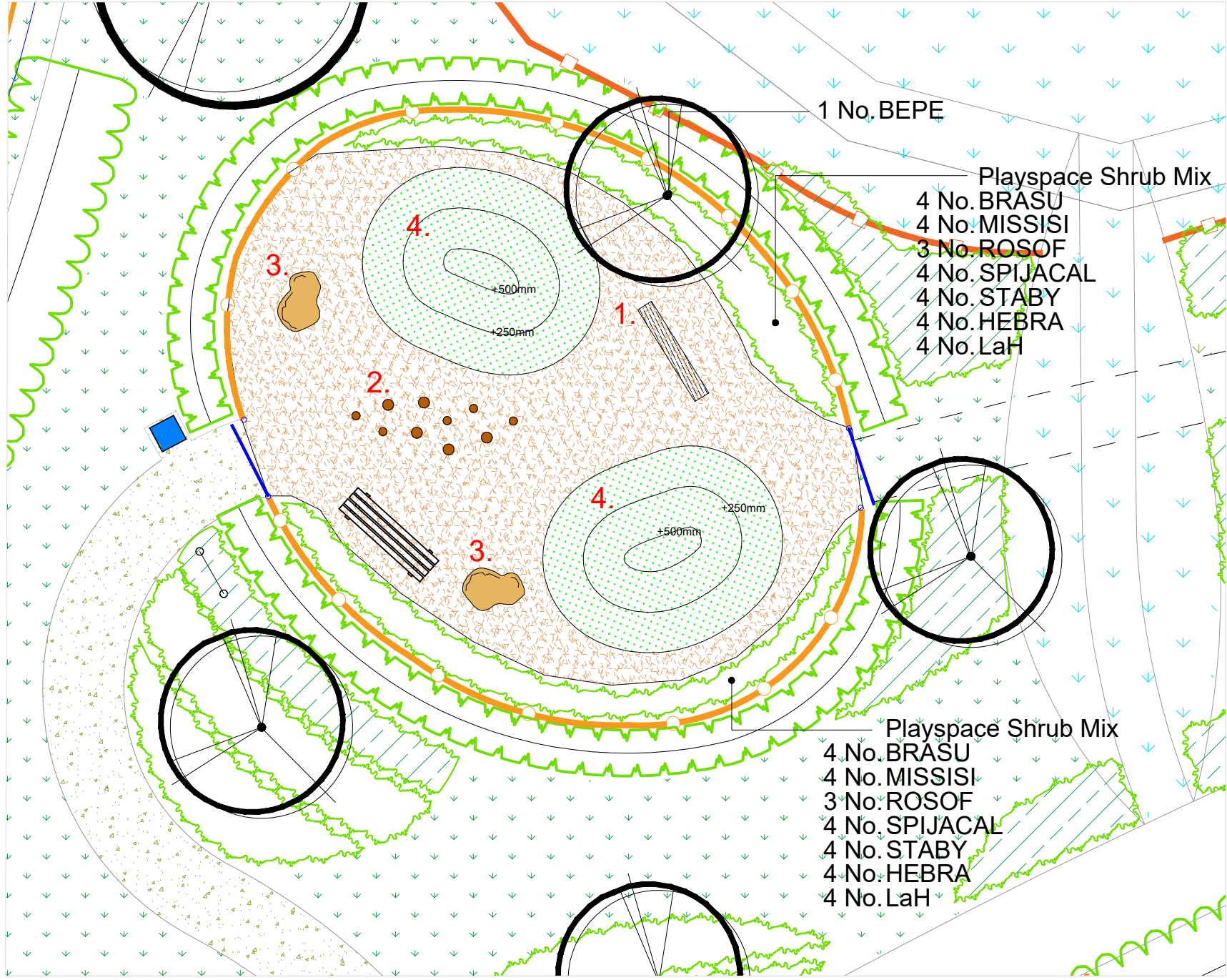
- 3. Supplier: Wicksteed (Bespoke Item)  
Product: 2x Natural Boulders, smooth finish  
Dimensions: Approx. L1200mm x W800mm x H800mm  
Weight: Approx 1200kg  
Installation: Embedded 1/3 into ground



- 4. Supplier: Bespoke Item  
Product: Grass Play Mound  
500mm high with 600mm flat top  
Covered in synthetic grass  
Gradient: 1 in 3



Examples of planting style within play area using grasses as a sensory device for play and allowing children to run between the planting blocks.



NOTES:  
Based upon the Ordnance Survey map with permission of The Controller of Her Majesty's Stationery Office, © Crown Copyright.  
Aspect Landscape Planning Ltd, West Court, Hardwick Business Park, Noral Way, Banbury OX16 2AF.  
Licence 100045345

Copyright reserved

Scale: 0m 1m 2m 4m

1:100 @ A3

KEY:

- Proposed Trees
- Proposed Play Area Shrubs
- Proposed Amenity Grass - Emorsgate EL1 Flowering Lawn Mixture
- Timber-edged Softwood Play Grade Bark Specification: 10-30mm Screened Depth: 300mm
- Timber-edged Hoggin Footpath Width: 1500mm  
\*For hoggin footpath detail please refer to Aspect drawing: 6703.PP.1.0
- Proposed Grass Mown Path Width: 1200mm
- Wooden Playground Fence, 1090mm High with Gravel Board (150x38mm). Natural Colour, Pressure Treated, Posts: L1800 x 125 x 125mm at 3000mm Centres, allow 750mm in ground. Rails: L900 x W100 x D38mm Pales: L900 x W100 x D38mm Supplier: Jacksons Fencing Total Length: Approx. 33m
- 2x Self-Closing, Outward Opening Gate Finish: Single Leaf, Green Posts Timber Finish: Natural Jakcure Finish as Standard Size: H1090mm, W1500mm Post Dimensions: 100 x 100mm Pales: 95 x 35mm Supplier: Jacksons Fencing
- Okehampton Redwood Litter Bin Supplier: Broxap Size: D500mm W500mm H950mm Finish: Redwood Timber Slats Fixing: Set of 4 Shield Anchor Bolts for Installation Fixed onto Hoggin Surface Capacity: 120 Litres Code: BX17 4030
- Hatton Rustic 4 Slat Seat Supplier: Broxap Finish: Treated Softwood Timber Size: L2000mm W580mm H770mm Root Fix Length: 300mm Code: BX17 4055
- Play Area Signage Supplier: Wicksteed Size: 900 x 600mm Shape: Rectangular Fitting: 2x Aluminium Posts 1800 mm (1500mm above ground) Set in Concrete Code: SIGN9060/P

Play Space Planting

Number	Abbreviation	Species	Specification	Girth	Height
1 -	BEPE	Betula pendula	Heavy Standard :Clear Stem min. 200 :RB	12-14cm	3.5-4.0m
Total : 1 -					

Playspace Mix

Number	Abbreviation	Species	Specification	Height	Pot Size	Density	%
8 -	BRASU	Brachyglottis 'Sunshine'	Bushy :3 brks	30-40cm	5L	3/m <sup>2</sup>	15%
8 -	HEBRA	Hebe rakaiensis	Bushy :3 brks	30-40cm	5L	3/m <sup>2</sup>	15%
8 -	LaH	Lavandula angustifolia 'Hidcote'	Bushy :3 brks	30-40cm	5L	3/m <sup>2</sup>	15%
8 -	MISSISI	Miscanthus sinensis 'Silberturm'	Full Pot	5L	5L	3/m <sup>2</sup>	15%
6 -	ROSOFF	Rosmarinus officinalis	Bushy :3 brks	30-40cm	5L	3/m <sup>2</sup>	10%
8 -	SPIJACAL	Spiraea japonica 'Candle Light'	Bushy :3 brks	30-40cm	5L	3/m <sup>2</sup>	15%
8 -	STABY	Stachys byzantina 'Big Ears'	Full Pot	5L	5L	3/m <sup>2</sup>	15%
Total :54 -							

\* For detailed planting plans of surrounding areas, please refer to Aspect drawing: 6703.PP.1.0



TITLE  
Church Road, Otham, Maidstone  
Play Space Detail - LAP 1 (North)

CLIENT  
Bellway Homes Ltd (Kent)

SCALE	DATE	DRAWN	CHK'D
1:100 @ A3	MAR 2021	BS	CJ
DRAWING NUMBER	REVISION		
6703.PS.2.0	C		

REV	DATE	NOTE	Drawn	CHK'd
C	02.09.22	Updated planting to officer site wide comments	CW	CW
B	17.12.21	Updated plans to revised layout	IC	CJ
A	03.06.21	Updated plans to revised layout	IC	CJ