

Pond Planting Proposals

Number	Abbreviation	Species	Specification	Height	Pot Size	Density
8	CORSA	Cornus sanguinea	Branched :3/5 brks	60-80cm	10L	Counted
33	CORSA	Cornus sanguinea	Branched :3/5 brks	60-80cm	10L	3/m ²

Number	Abbreviation	Species	Specification	Density	%
60	CALPA	Caltha palustris	Supplied in 11cm mesh containers	9/m ²	20%
31	FILUL	Filipendula ulmaria	Supplied in 11cm mesh containers	9/m ²	10%
46	IRIPS	Iris pseudacorus	Supplied in 11cm mesh containers	9/m ²	15%
46	JUNEF	Juncus effusus	Supplied in 11cm mesh containers	9/m ²	15%
46	LYTSA	Lythrum salicaria	Supplied in 11cm mesh containers	9/m ²	15%
31	POTPA	Potentilla palustris	Supplied in 11cm mesh containers	9/m ²	10%
46	SAGSA	Sagittaria sagittifolia	Supplied in 11cm mesh containers	9/m ²	15%

Number	Abbreviation	Species	Specification	Pot Size	Density
123	CARPE	Carex pendula	Full Pot	5L	5/m ²
15	FONAN	Fontinalis antipyretica	Local or British: Bunched and Weighted		Counted
3	NYMPHA	Nymphaea alba	Well Rooted: Supplied in 2L Planting basket		Counted
1	POTNAT	Potamogeton natans	Well Rooted: Supplied in 2L Planting basket		Counted

Number	Abbreviation	Species	Specification	Density
15	MYRSP	Myriophyllum spicatum	Local or British: Bunched and Weighted	Counted

Number	Abbreviation	Species	Specification	Density	%
36	ACOCA	Acorus calamus	Supplied in 11cm mesh containers	9/m ²	30%
30	BUTUM	Butomus umbellatus	Supplied in 11cm mesh containers	9/m ²	25%
30	PERAM	Persicaria amphibia	Supplied in 11cm mesh containers	9/m ²	25%
24	SAGSA	Sagittaria sagittifolia	Supplied in 11cm mesh containers	9/m ²	20%

Number	Abbreviation	Species	Specification	Pot Size	Density	%
21	BLESP	Blechnum spicant	Full Pot	3L	9/m ²	15%
34	CARRIV	Carex riparia 'Variegata'	Full Pot :5 Buds	3L	9/m ²	25%
21	DRYAT	Dryopteris atrata	Full Pot	3L	9/m ²	15%
21	IRILB	Iris louisiana 'Bilgola'	Full Pot :5 Buds	3-3.5L	9/m ²	15%
14	IRIPSV	Iris pseudacorus 'Variegata'	Full Pot :5 Buds	3-3.5L	9/m ²	10%
28	JUNEF	Juncus effusus	Full Pot :5 Buds	3-3.5L	9/m ²	20%

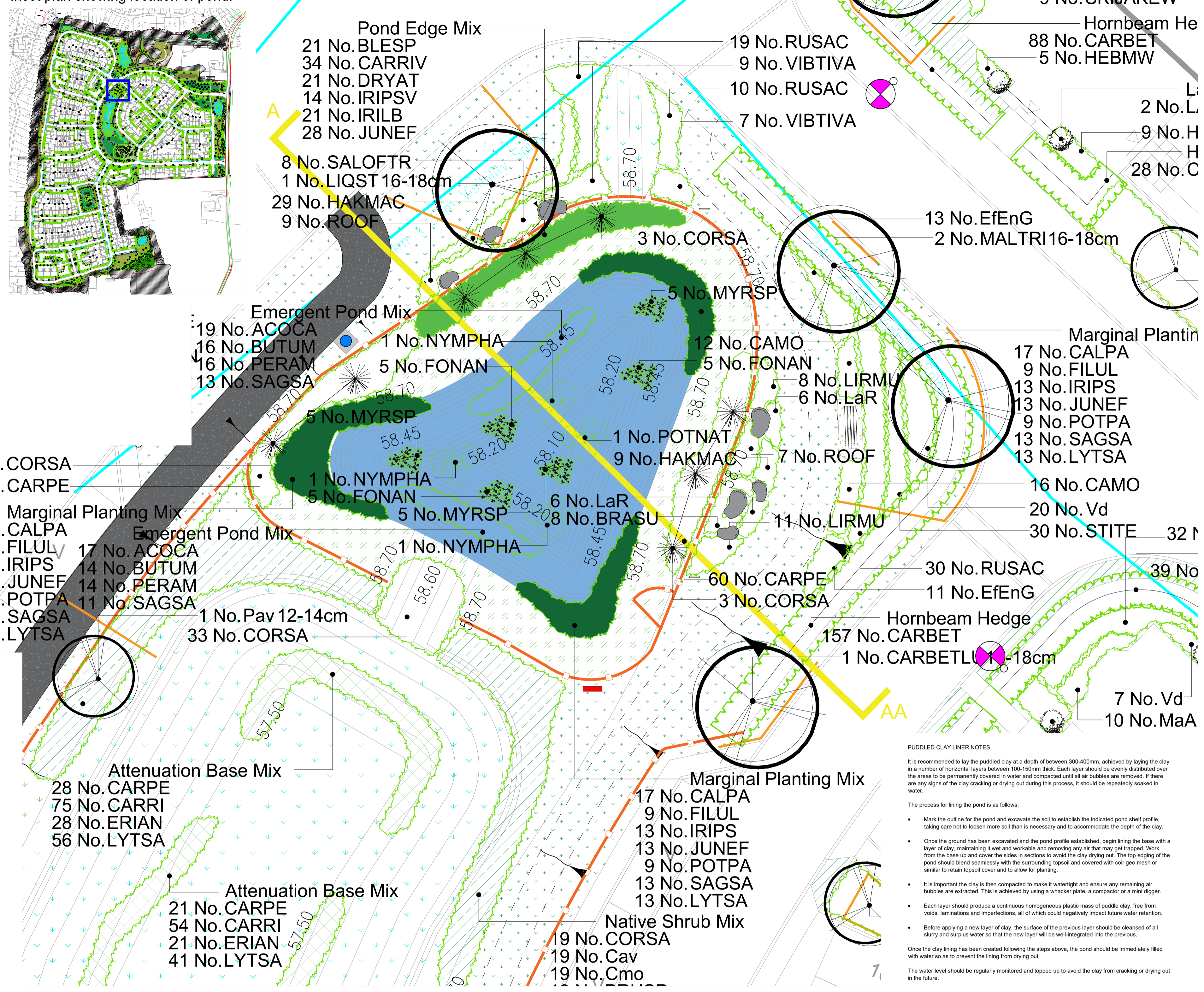
Number	Abbreviation	Species	Specification
26	CALPA	Caltha palustris	Full Pot

Pond planting schedule also included within the full planting schedule on Aspect detailed planting plans (Drawing reference: 6703.PP.1.0).

NB: Pond to include a geo mesh product coir or similar to be installed around the top of the pond banks to hold soils in place.

Cross Section - Proposed Pond along with indicative profiling:

Inset plan showing location of pond:



KEY:

- Proposed Trees
- Proposed Ornamental Hedgerow
- Proposed Feature Shrub
- Proposed Native Shrubs
- Proposed Ornamental Shrubs
- Proposed Attenuation Base Mix
- Proposed Marginal Planting
- Proposed Pond Edge Planting Mix
- Proposed Emergent Pond Mix
- Proposed Aquatic Planting / Oxygenators
- Proposed Amenity Turf to Plot Frontages - Rotawin Medallion Turf Rolls or similar
- Proposed Amenity Grass - Emorsgate EL1 Flowering Lawn Mixture
- Proposed Wet Grass Mix - Emorsgate EM8 Meadow Mixture for Wetlands
- Proposed Pond Edge Mix - Emorsgate EP1 Pond Edge Mixture
- Proposed Glacial Boulders Supplier: CED Stone Size: 900mm - 1250mm
- Proposed Grass Mown Path - 1200mm Wide
- Proposed Post and Rail Fencing with Lockable Gate Height: 1000mm
- Proposed Timber Knee Rail Height: 450mm
- Hatton Rustic 4 Slat Seat Supplier: Broxap Finish: Treated Softwood Timber Size: (L) 2000 x (W) 580mm x (H) 770mm Roof Fix Length: 300mm Code: BX17 4055
- Timber-edged Hoggan Pad for Bench Dims: (L) 2500 x (W) 1000mm For hoggan steel plate refer to Aspect drawing 6703.PP.1.0
- Group Derby Round Litter Bin Finish: Stainless Steel Standard 240 Grit Dull Polish Fixing: Set of 4 Shield Anchor Bolts for installation Fixed onto 200mm deep concrete pad Height: 1110mm Width: 580mm Capacity: 150 litres Code: BX50S 2554
- Life Buoy and Open Housing Cabinet Set Supplier: Lifebuoys Direct or similar approved Finish: 24" Life Buoy with SOLAS tape and 20m encapsulated throw line, with a 1.5m galvanneal base mounting post Fixing: Baseplated onto 200mm deep concrete pad Code: LBSET24
- 2x Safety Warning Sign with Channeling Kit and Posts Supplier: Viking Signs or similar approved Finish: Danger Deep Water Aluminium Composite 30mm sign - 400mm x 300mm; 2x 2m high metal posts (50mm dia.) with 2x 400mm channeling and 4 clips Fixing: Free Standing - Set 500mm into ground Codes: WV7175-ASL-AC, PPO102-50mm-400mm
- Tarmac Footpath - 2000mm Wide

POND PLANTING NOTES

All plants to be supplied in accordance with the HTA 'National Plant Specification' and from a HTA certified nursery. All plants to be supplied in accordance with BS3505: Delivery and handling of all plant material to be in accordance with BS4428/JCL/CPSE Code of Practice for 'Handling and Establishing Landscape Plants' Parts 1, 11 and II.

All pond plants are to be British-grown natives and shall be obtained from hygiene-certified sources and confirmed to be free of contamination by invasive alien species. Care should be taken to ensure plants do not dry out in the transfer process.

Topsoil to planted pond margins to be applied if required to a maximum depth of 150mm. In small pockets located on shelves, and topsoil to be BS3880-General purpose grade. All soiled areas to be cleared of rocks and rubble larger than 50mm diameter and any other debris that may interfere with the establishment of plants.

The pond shall be profiled to create gently sloping or stepped sides to a depth of 700mm at its deepest point.

The profile is as follows:

- Submerged oxygenators.** Supplied in weighted bundles. Water depth to 700mm.
- Deep water plants.** Supplied in 2 litre planting baskets. On shelves at depth of 500mm.
- Marginals and Emergents.** Supplied in 11cm mesh containers. On shelves at depth of 250mm and on pond edge as shown.
- Pond Edge wildflower grassland.** Emorsgate EP1 as shown.

All submerged oxygenators to be placed randomly within 700mm water depth.

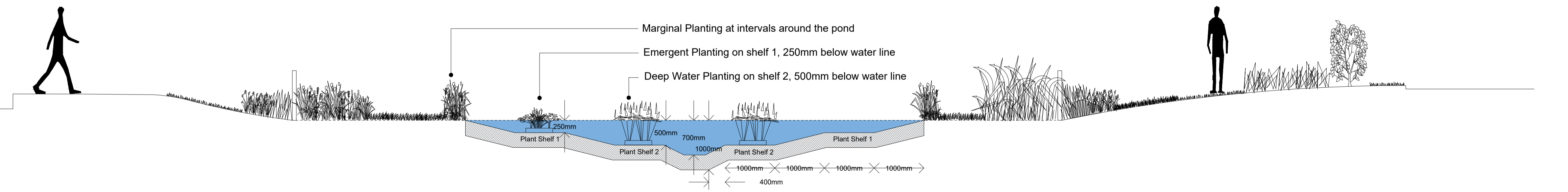
All deep water plants to be placed on a profiled shelf so that the leaves float on the water surface and the basket is supported.

All marginal plants to be planted in groups of 3 and 5s in a random fashion avoiding formal regimented lines at ornamentals indicated in the schedule.

Planting and associated operations shall comply with BS4043, BS4428 and BS5837. Unless otherwise stated, pond planting shall be ideally carried out during Spring/Summer or as indicated by the ecological consultant.

Pond Edge wildflower grassland seeding to be in accordance with Emorsgate recommendations. All areas to be seeded are to be weed free sub soil that has been cultivated, harrowed and rolled to finished levels that are free from stones or other debris. Seeds to be sown at rates specified (4gms per square metre) at timings of either August to September or March to April. In year one, cut back annual weed growth and mow to ensure establishment to a height of 40-50mm and removing arisings. Year 2 and onwards undertake a 'hay cut', drying in situ and removing once seed has set.

Scale 1:50



Primary Road Through Site | Pavement | Grass and Planting Strip with Post and Rail Fencing | Pond Edge Planting | Pond - Lined with Puddled Clay. Pond Bank supported with Geo mesh. Pond Edge Grass Mix around Perimeter of Pond. Marginal and Aquatic Planting in and around Pond. | Pond Edge Planting | Post and Rail Fencing with Ornamental Shrubs and boulders | Amenity Grass | 1200mm Mown Grass Path | Wild Flower Grass | Hedge Grass Verge | Secondary Road

aspect landscape planning

TITLE
Church Road, Otham, Maidstone
Pond - Planting Proposals

CLIENT
Bellway Homes Ltd (Kent)

SCALE	DATE	DRAWN	CHK'D
1:100@A1	MAY 2021	IC	CW

DRAWING NUMBER	REVISION
6703.P_PP.3.2	C