

**Inset plan showing location of LAP:**

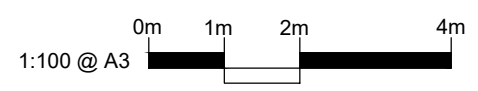


**Play Space Planting**

| Herbaceous |              |                                  |                  |          |                  |
|------------|--------------|----------------------------------|------------------|----------|------------------|
| Number     | Abbreviation | Species                          | Specification    | Pot Size | Density          |
| 16 -       | MISSISI      | Miscanthus sinensis 'Silberturm' | 7 Buds :Full Pot | 10L      | 3/m <sup>2</sup> |

**Playspace Mix**

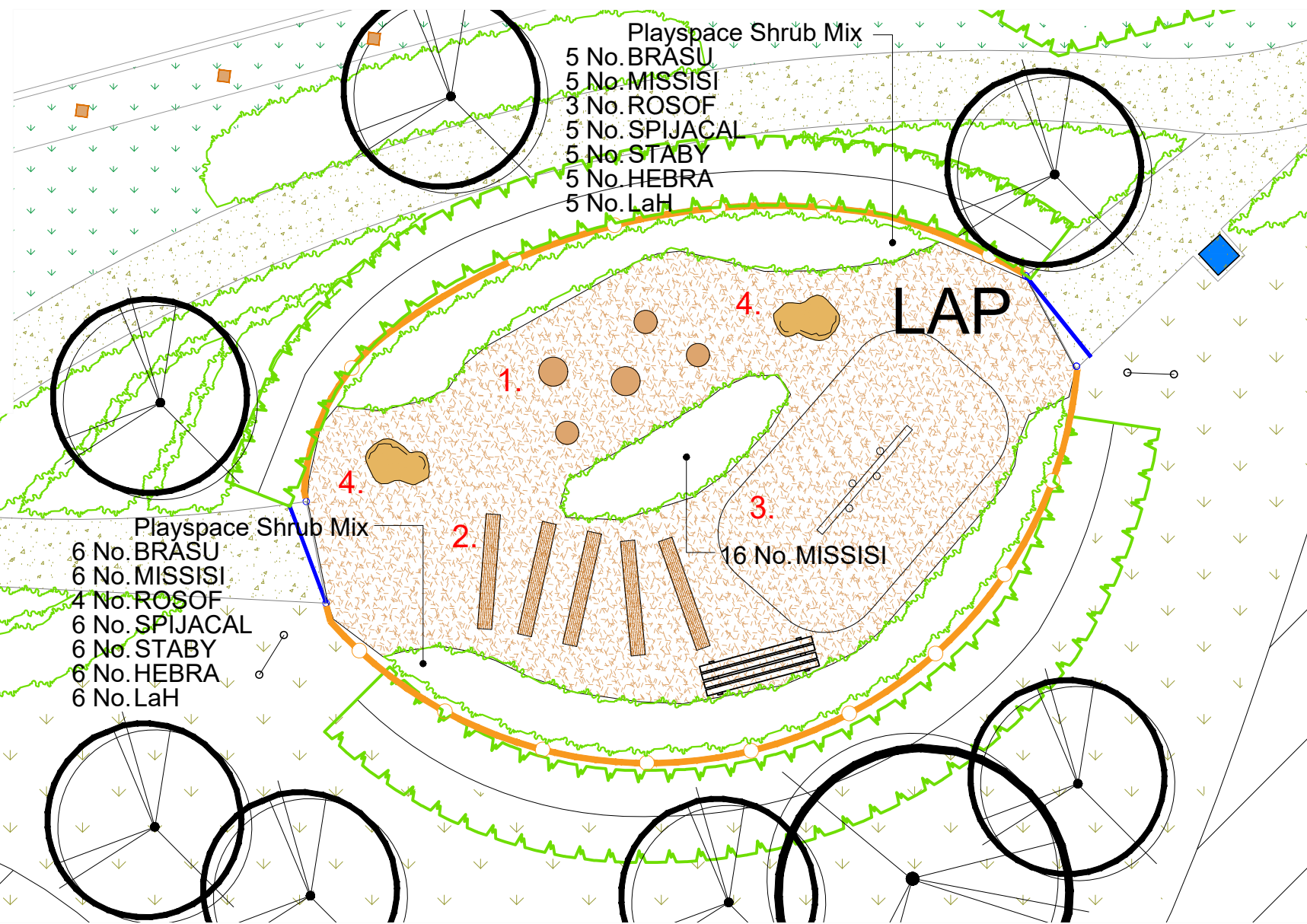
| Number      | Abbreviation | Species                          | Specification | Height  | Pot Size | Density          | %   |
|-------------|--------------|----------------------------------|---------------|---------|----------|------------------|-----|
| 11 -        | BRASU        | Brachyglottis 'Sunshine'         | Bushy :3 brks | 30-40cm | 5L       | 3/m <sup>2</sup> | 15% |
| 11 -        | HEBRA        | Hebe rakaiensis                  | Bushy :3 brks | 30-40cm | 5L       | 3/m <sup>2</sup> | 15% |
| 11 -        | LaH          | Lavandula angustifolia 'Hidcote' | Bushy :3 brks | 30-40cm | 5L       | 3/m <sup>2</sup> | 15% |
| 11 -        | MISSISI      | Miscanthus sinensis 'Silberturm' | Full Pot      |         | 5L       | 3/m <sup>2</sup> | 15% |
| 7 -         | ROSOFF       | Rosmarinus officinalis           | Bushy :3 brks | 30-40cm | 5L       | 3/m <sup>2</sup> | 10% |
| 11 -        | SPIJACAL     | Spiraea japonica 'Candle Light'  | Bushy :3 brks | 30-40cm | 5L       | 3/m <sup>2</sup> | 15% |
| 11 -        | STABY        | Stachys byzantina 'Big Ears'     | Full Pot      |         | 5L       | 3/m <sup>2</sup> | 15% |
| Total :73 - |              |                                  |               |         |          |                  |     |



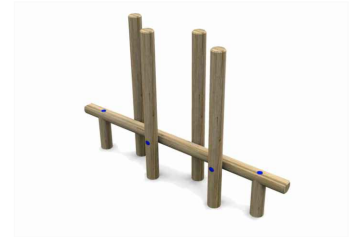
NOTES:  
Based upon the Ordnance Survey map with permission of The Controller of Her Majesty's Stationery Office. © Crown Copyright.  
Aspect Landscape Planning Ltd, West Court, Hardwick Business Park, Noral Way, Banbury OX16 2AF.  
Licence 100045345  
Copyright reserved

**KEY:**

- Proposed Trees
- Proposed Play Area Shrubs
- Timber-edged Softwood Play Grade Bark  
Specification: 10-30mm Screened  
Depth: 300mm
- Timber-edged Hoggin Footpath  
Width: 1500mm at Play Space Entrance reducing to 1200mm at Footpath  
\*For hoggin footpath detail please refer to Aspect drawing: 6703.PP.1.0
- Wooden Playground Fence, 1090mm High with Gravel Board (150x38mm).  
Natural Colour, Pressure Treated,  
Posts: L1800 x 125 x125mm at 3000mm  
Centres, allow 750mm in ground.  
Rails: L900 x W100 x D38mm  
Pales: L900 x W100 x D38mm  
Supplier: Jacksons Fencing  
Total Length: Approx. 33m
- 2x Self-Closing, Outward Opening Gate  
Finish: Single Leaf, Green Posts  
Timber Finish: Natural Jakcure Finish as Standard  
Size: H1090mm, W1500mm  
Post Dimensions: 100 x 100mm  
Pales: 95 x 35mm  
Supplier: Jacksons Fencing
- Okehampton Redwood Litter Bin  
Supplier: Broxap  
Size: D500mm W500mm H950mm  
Finish: Redwood Timber Slats  
Fixing: Set of 4 Shield Anchor Bolts for Installation Fixed onto Hoggin Surface  
Capacity: 120 Litres  
Code: BX17 4030
- Hatton Rustic 4 Slat Seat  
Supplier: Broxap  
Finish: Treated Softwood Timber  
Size: L2000mm W580mm H770mm  
Root Fix Length: 300mm  
Code: BX17 4055
- 2x Play Area Signage  
Supplier: Wicksteed  
Size: 900 x 600mm  
Shape: Rectangular  
Fitting: 2x Aluminium Posts 1800 mm (1500mm above ground)  
Set in Concrete  
Code: SIGN9060/P



**Proposed LAP Equipment:**



1. Supplier: Wicksteed (Bespoke Item)  
Product: 5x Wooden Mushroom  
Dimensions: 3x D400mm x H800mm (400mm above ground);  
2x D500mm x H900mm (500mm above ground)  
Fixing: Set in 200mm concrete pads  
Product Code: n/a
2. Supplier: Bespoke Item  
Product: 5x Treated Hardwood Timber Sleepers set flush in the ground  
Size: L2000 x W250 x H200mm
3. Supplier: Wicksteed  
Product: Balance Weaver  
Product Code: BBW24  
Fixing: Please refer to Manufacturer's information
4. Supplier: Wicksteed (Bespoke Item)  
Product: 2x Natural Boulders, smooth finish  
Dimensions: Approx. L1200mm x W800mm x H800mm  
Weight: Approx 1200kg  
Installation: Embedded 1/3 into ground

Examples of planting style within play area using grasses as a sensory device for play and allowing children to run between the planting blocks.

| REV | DATE     | NOTE   | Drawn | Chk'd |
|-----|----------|--|-------|-------|
| C   | 02.09.22 | Updated planting to officer site wide comments | CW    | CW    |
| B   | 17.12.21 | Updated plans to revised layout                | IC    | CJ    |
| A   | 03.06.21 | Updated plans to revised layout                | IC    | CJ    |



TITLE  
Church Road, Otham, Maidstone  
Play Space Detail - LAP 3 (South)

CLIENT  
Bellway Homes Ltd (Kent)

| SCALE                         | DATE     | DRAWN         | CHK'D |
|-------------------------------|----------|---------------|-------|
| 1:100 @ A3                    | MAR 2021 | BS            | CJ    |
| DRAWING NUMBER<br>6703.PS.2.2 |          | REVISION<br>C |       |