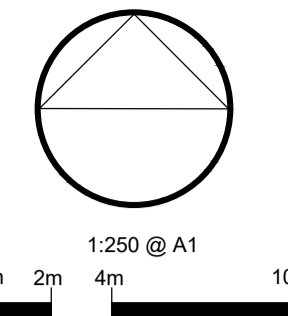
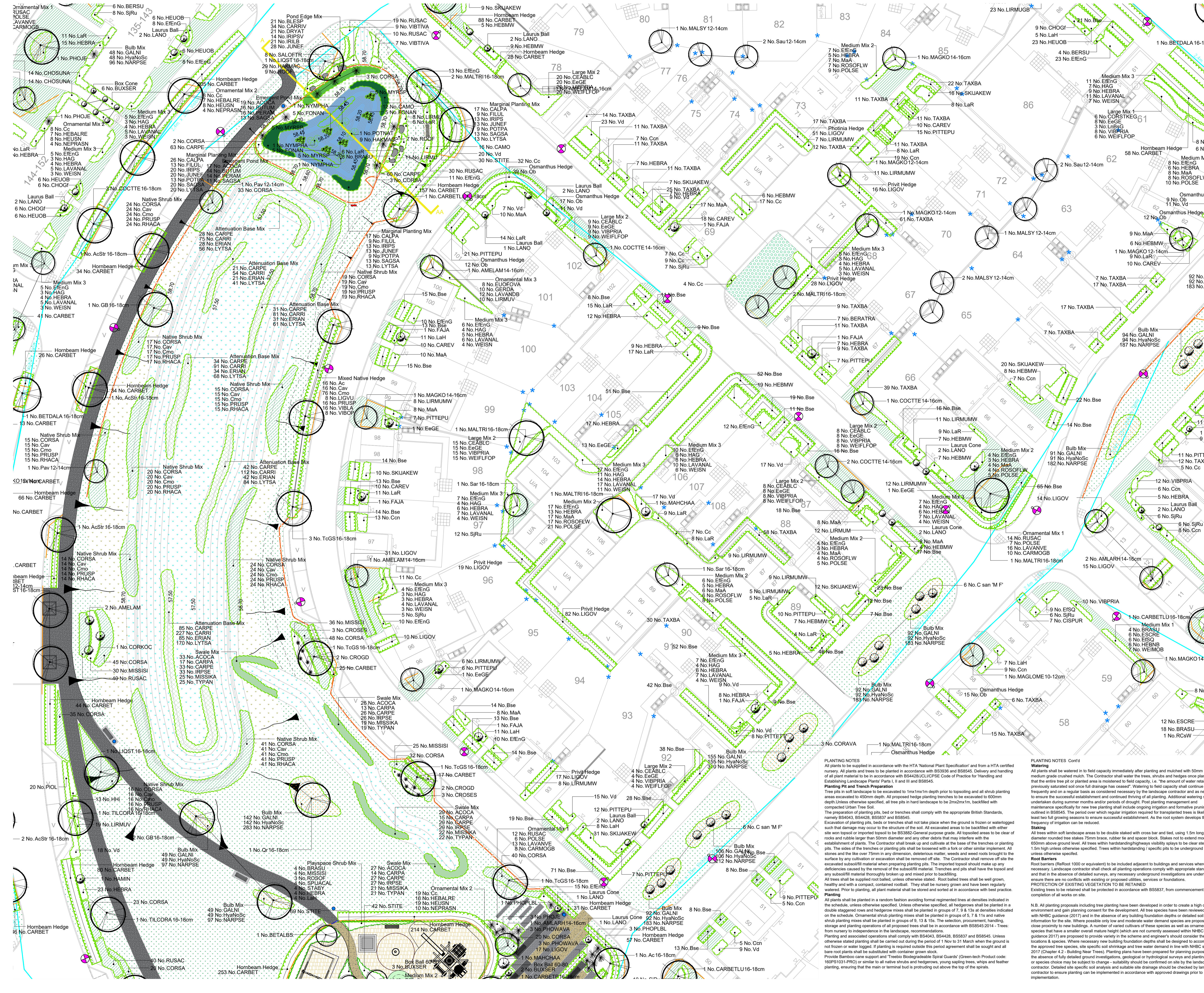


NOTES:  
 Based on the Ordnance Survey map with permission of Her Majesty's Stationery Office. © Crown Copyright.  
 Aspect Landscape Planning Ltd, West Court, Hardwick Business Park, Noral Way, Banbury OX15 2AF.  
 Licence 1005435  
 Copyright reserved



- Site Boundary
- Highway Boundary
- Existing Trees
- Existing Shrubs
- Proposed Trees
- Proposed Orchard Trees
- Proposed Mulberry Trees
- Proposed Large Native Hedgerow / Instant Hedgerow Mix
- Proposed Native Hedgerow - Maintained at a maximum height of 2m
- Proposed Native Hedgerow - Maintained at a maximum height of 1.5m
- Proposed Ornamental Hedgerow - Maintained at a maximum height of 600mm
- Proposed Climbers
- Proposed Feature Shrub
- Proposed Native Woodland Mix
- Proposed Native Shrub Mix
- Proposed Managed Scrub Mix
- Proposed Shrubs
- Proposed Ornamental Bulbs
- Proposed Attenuation Base Mix
- Proposed Marginal Planting
- Proposed Swale Planting
- Proposed Pond Edge Planting Mix
- Proposed Emergent Pond Mix
- Proposed Aquatic Planting / Oxygenators
- Proposed Amenity Turf to Plot Frontages - Roll-in Meadow Turf Rolls or Similar
- Proposed Amenity Grass
- Proposed Emergent Grass
- Proposed Amenity Lawn Mixture
- Proposed Wildflower Mix - Emergent EM3 Special General Purpose Meadow Mixture
- Proposed Native Grass Mix - Emergent EM3 Meadow Mixture for Wetlands
- Proposed Pond Edge Mix
- Proposed Emergent Pond Edge Mixture
- Proposed Grass Mown Path - 1200-1500mm Wide
- Proposed Timber Post and Rail Fence
- Proposed Timber Knee Rail
- Height: 1200mm
- Height: 600mm
- Height: 800mm
- Height: 1000mm
- Height: 1500mm
- Height: 2000mm
- Height: 2500mm
- Height: 3000mm
- Height: 3500mm
- Height: 4000mm
- Height: 4500mm
- Height: 5000mm
- Height: 5500mm
- Height: 6000mm
- Height: 6500mm
- Height: 7000mm
- Height: 7500mm
- Height: 8000mm
- Height: 8500mm
- Height: 9000mm
- Height: 9500mm
- Height: 10000mm
- Height: 10500mm
- Height: 11000mm
- Height: 11500mm
- Height: 12000mm
- Height: 12500mm
- Height: 13000mm
- Height: 13500mm
- Height: 14000mm
- Height: 14500mm
- Height: 15000mm
- Height: 15500mm
- Height: 16000mm
- Height: 16500mm
- Height: 17000mm
- Height: 17500mm
- Height: 18000mm
- Height: 18500mm
- Height: 19000mm
- Height: 19500mm
- Height: 20000mm
- Height: 20500mm
- Height: 21000mm
- Height: 21500mm
- Height: 22000mm
- Height: 22500mm
- Height: 23000mm
- Height: 23500mm
- Height: 24000mm
- Height: 24500mm
- Height: 25000mm
- Height: 25500mm
- Height: 26000mm
- Height: 26500mm
- Height: 27000mm
- Height: 27500mm
- Height: 28000mm
- Height: 28500mm
- Height: 29000mm
- Height: 29500mm
- Height: 30000mm
- Height: 30500mm
- Height: 31000mm
- Height: 31500mm
- Height: 32000mm
- Height: 32500mm
- Height: 33000mm
- Height: 33500mm
- Height: 34000mm
- Height: 34500mm
- Height: 35000mm
- Height: 35500mm
- Height: 36000mm
- Height: 36500mm
- Height: 37000mm
- Height: 37500mm
- Height: 38000mm
- Height: 38500mm
- Height: 39000mm
- Height: 39500mm
- Height: 40000mm
- Height: 40500mm
- Height: 41000mm
- Height: 41500mm
- Height: 42000mm
- Height: 42500mm
- Height: 43000mm
- Height: 43500mm
- Height: 44000mm
- Height: 44500mm
- Height: 45000mm
- Height: 45500mm
- Height: 46000mm
- Height: 46500mm
- Height: 47000mm
- Height: 47500mm
- Height: 48000mm
- Height: 48500mm
- Height: 49000mm
- Height: 49500mm
- Height: 50000mm
- Height: 50500mm
- Height: 51000mm
- Height: 51500mm
- Height: 52000mm
- Height: 52500mm
- Height: 53000mm
- Height: 53500mm
- Height: 54000mm
- Height: 54500mm
- Height: 55000mm
- Height: 55500mm
- Height: 56000mm
- Height: 56500mm
- Height: 57000mm
- Height: 57500mm
- Height: 58000mm
- Height: 58500mm
- Height: 59000mm
- Height: 59500mm
- Height: 60000mm
- Height: 60500mm
- Height: 61000mm
- Height: 61500mm
- Height: 62000mm
- Height: 62500mm
- Height: 63000mm
- Height: 63500mm
- Height: 64000mm
- Height: 64500mm
- Height: 65000mm
- Height: 65500mm
- Height: 66000mm
- Height: 66500mm
- Height: 67000mm
- Height: 67500mm
- Height: 68000mm
- Height: 68500mm
- Height: 69000mm
- Height: 69500mm
- Height: 70000mm
- Height: 70500mm
- Height: 71000mm
- Height: 71500mm
- Height: 72000mm
- Height: 72500mm
- Height: 73000mm
- Height: 73500mm
- Height: 74000mm
- Height: 74500mm
- Height: 75000mm
- Height: 75500mm
- Height: 76000mm
- Height: 76500mm
- Height: 77000mm
- Height: 77500mm
- Height: 78000mm
- Height: 78500mm
- Height: 79000mm
- Height: 79500mm
- Height: 80000mm
- Height: 80500mm
- Height: 81000mm
- Height: 81500mm
- Height: 82000mm
- Height: 82500mm
- Height: 83000mm
- Height: 83500mm
- Height: 84000mm
- Height: 84500mm
- Height: 85000mm
- Height: 85500mm
- Height: 86000mm
- Height: 86500mm
- Height: 87000mm
- Height: 87500mm
- Height: 88000mm
- Height: 88500mm
- Height: 89000mm
- Height: 89500mm
- Height: 90000mm
- Height: 90500mm
- Height: 91000mm
- Height: 91500mm
- Height: 92000mm
- Height: 92500mm
- Height: 93000mm
- Height: 93500mm
- Height: 94000mm
- Height: 94500mm
- Height: 95000mm
- Height: 95500mm
- Height: 96000mm
- Height: 96500mm
- Height: 97000mm
- Height: 97500mm
- Height: 98000mm
- Height: 98500mm
- Height: 99000mm
- Height: 99500mm
- Height: 100000mm
- Height: 100500mm
- Height: 101000mm
- Height: 101500mm
- Height: 102000mm
- Height: 102500mm
- Height: 103000mm
- Height: 103500mm
- Height: 104000mm
- Height: 104500mm
- Height: 105000mm
- Height: 105500mm
- Height: 106000mm
- Height: 106500mm
- Height: 107000mm
- Height: 107500mm
- Height: 108000mm
- Height: 108500mm
- Height: 109000mm
- Height: 109500mm
- Height: 110000mm
- Height: 110500mm
- Height: 111000mm
- Height: 111500mm
- Height: 112000mm
- Height: 112500mm
- Height: 113000mm
- Height: 113500mm
- Height: 114000mm
- Height: 114500mm
- Height: 115000mm
- Height: 115500mm
- Height: 116000mm
- Height: 116500mm
- Height: 117000mm
- Height: 117500mm
- Height: 118000mm
- Height: 118500mm
- Height: 119000mm
- Height: 119500mm
- Height: 120000mm
- Height: 120500mm
- Height: 121000mm
- Height: 121500mm
- Height: 122000mm
- Height: 122500mm
- Height: 123000mm
- Height: 123500mm
- Height: 124000mm
- Height: 124500mm
- Height: 125000mm
- Height: 125500mm
- Height: 126000mm
- Height: 126500mm
- Height: 127000mm
- Height: 127500mm
- Height: 128000mm
- Height: 128500mm
- Height: 129000mm
- Height: 129500mm
- Height: 130000mm
- Height: 130500mm
- Height: 131000mm
- Height: 131500mm
- Height: 132000mm
- Height: 132500mm
- Height: 133000mm
- Height: 133500mm
- Height: 134000mm
- Height: 134500mm
- Height: 135000mm
- Height: 135500mm
- Height: 136000mm
- Height: 136500mm
- Height: 137000mm
- Height: 137500mm
- Height: 138000mm
- Height: 138500mm
- Height: 139000mm
- Height: 139500mm
- Height: 140000mm
- Height: 140500mm
- Height: 141000mm
- Height: 141500mm
- Height: 142000mm
- Height: 142500mm
- Height: 143000mm
- Height: 143500mm
- Height: 144000mm
- Height: 144500mm
- Height: 145000mm
- Height: 145500mm
- Height: 146000mm
- Height: 146500mm
- Height: 147000mm
- Height: 147500mm
- Height: 148000mm
- Height: 148500mm
- Height: 149000mm
- Height: 149500mm
- Height: 150000mm



REV	DATE	NOTE	DRAWN	CHK'D
E	24.10.22	Revised Kneeholes to Landscape to Office comments	CW	CW
C	03.06.22	Revised Landscaping to Office comments	CW	CW
B	11.02.22	Revised tree locations to updated lighting layout	IC	IC
A	17.12.21	Updated plans to latest layout and team comments	IC	CW

**aspect landscape planning**

TITLE  
 Church Road, Otham, Maidstone  
 Planting Plan 5 of 13

CLIENT  
 Bellway Homes Ltd (Kent)

SCALE  
 1:250@A1

DATE  
 JUL 2021

DRAWING NUMBER  
 6703.PP.1.5

DRAWN  
 IC

CHK'D  
 CJ

REVISION  
 E

N.B. All planting proposals including tree planting have been developed in order to create a high quality environment and gain planning consent for the development. All tree species have been reviewed in line with NHC guidance (2017) and in the absence of any building foundation depths or detailed soil analysis information for the site. Where possible only low and moderate water demand species are proposed in close proximity to new buildings. A number of varied cultivars of these species as well as ornamental species that have a smaller overall mature height (which are not currently assessed within NHC guidance 2017) are proposed to provide variety in the scheme and engineer's should consider these locations & species. Where necessary new building foundation depths shall be designed to accommodate the approved tree species, site specific soil shrinkage and tree water demand in line with NHC standards 2017 (Chapter 4.2 - Building Near Trees). Planting plans have been prepared for planting purposes and in the absence of fully detailed ground investigations, geological or hydrological surveys and planting design or species choice may be subject to change - suitability should be confirmed on site by the landscape contractor. Detailed site specific soil analysis and suitable site drainage should be checked by landscape contractor to ensure planting can be implemented in accordance with approved drawings prior to implementation.

**PLANTING NOTES Cont'd**

**Watering**  
 All plants to be watered in accordance with the HVA 'National Plant Specification' and from a HFA certified nursery. All plants and trees to be planted in accordance with BS3938 and BS8545. Delivery and handling of all plant material to be in accordance with BS4428/JC/LIC/PE Code of Practice for Handling and Establishing Landscape Plants Parts 1, 11 and 13 and BS8545.

**Planting Pit and Trench Preparation**  
 Tree pits in soft landscape to be excavated to 1m x 1m x 1m depth prior to topsoiling and all shrub planting areas excavated to 450mm depth. All proposed hedge planting trenches to be excavated to 600mm depth. Unless otherwise specified, all tree pits in hard landscape to be 2m x 2m x 1m, backfilled with compacted Urban Tree Soil.

The preparation of planting pits, beds or trenches shall comply with the appropriate British Standards, namely BS4043, BS4428, BS8537 and BS8545.

Excavation of planting pits, beds or trenches shall not take place when the ground is frozen or waterlogged such that damage may occur to the structure of the soil. All excavated areas to be backfilled with either site won topsoil or imported topsoil to be BS3882-General purpose grade. All topsoiled areas to be clear of rocks and rubble larger than 50mm diameter and any other debris that may interfere with the establishment of plants. The Contractor shall break up and outfall at the base of the trenches or planting pits. The sides of the trenches or planting pits shall be loosened with a fork or other similar implement. All stones and the like over 75mm in any dimension, deleterious matter, weeds and weed roots brought to the surface by any cultivation or excavation shall be removed off site. The Contractor shall remove off site the excavated subsoil material when preparing planting pits. The imported topsoil should make up any deficiencies caused by the removal of the subsoil material. Trenches and pits shall have the topsoil and any subsoil material thoroughly broken up and mixed prior to backfilling.

All trees shall be supplied root balled, unless otherwise stated. Root balled trees shall be well grown, healthy and with a compact, contained rootball. They shall be nursery grown and have been regularly watered. Prior to planting, all plant material shall be stored and sorted in accordance with best practice.

**Planting**  
 All plants shall be planted in a random fashion avoiding formal regimented lines at densities indicated in the schedule, unless otherwise specified. Unless otherwise specified, all hedgerows shall be planted in a double staggered rows and hedgerow rows shall be planted in groups of 7, 8 & 12 at densities indicated on the schedule. Ornamental shrub planting mixes shall be planted in groups of 5, 7 & 11 and native shrub planting mixes shall be planted in groups of 9, 13 & 15. The selection, procurement, handling, storage and planting operations of all proposed trees shall be in accordance with BS5545:2014 - Trees from nursery to independence in the landscape, recommendations.

Planting and associated operations shall comply with BS4043, BS4428, BS8537 and BS8545. Unless otherwise stated planting shall be carried out during the period of 1 Nov to 31 March when the ground is not frozen or water logged. If planting is required outside this period approval shall be sought and all bare root plants shall be substituted with container grown stock.

Provide Bamboo cane supports and 'Treehoop Biodegradable Spiral Guards' (Green-Tech product code: 160P9101-PR) or similar to all native shrubs and hedgerows, young sapling trees, whips and feather planting, ensuring that the main or terminal bud is protruding above the top of the spirals.

**PLANTING NOTES**

All trees within soft landscape areas to be double staked with cross bar and bed, using 1.5m long, 75mm diameter rounded tree stakes 75mm brace, rubber tie and spacer block. Stakes not to extend more than 650mm around tree level. All trees within hardstanding/highways visibility splays to be stem clear to 1.5m high unless otherwise specified. Trees within hardstanding / specific pits to be underground gapped unless otherwise specified.

**Root Barriers**  
 Root barriers (ReRoot 1000 or equivalent) to be included adjacent to buildings and services where necessary. Landscape contractor shall check all planting operations comply with appropriate standards and that in the absence of detailed surveys, any necessary underground investigations are undertaken to ensure there are no conflicts with existing or proposed utilities, services or foundations.

**PROTECTION OF EXISTING VEGETATION TO BE RETAINED**  
 Existing trees to be retained shall be protected in accordance with BS5837, from commencement to completion of all works on site.