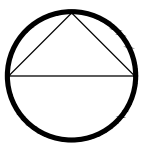
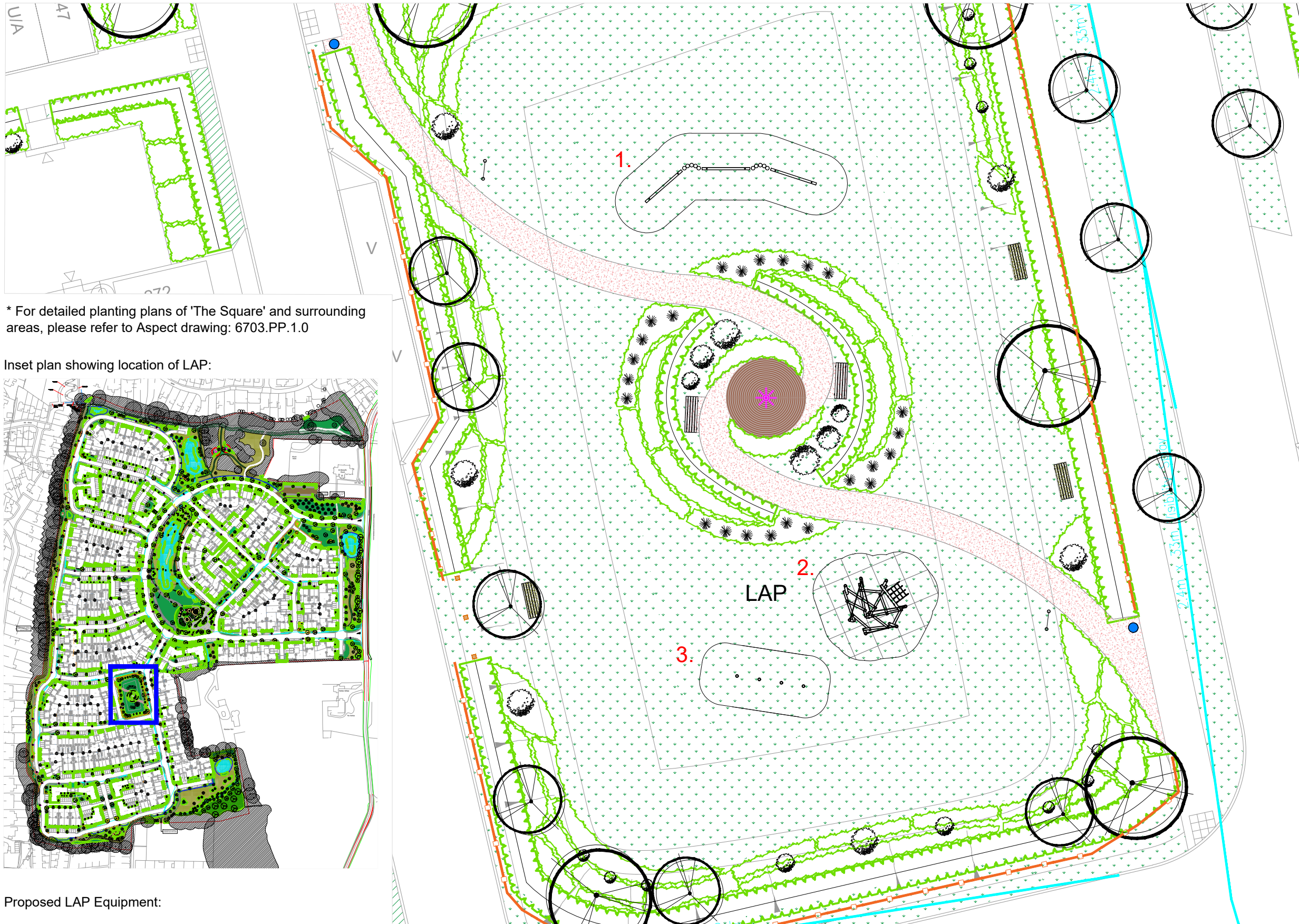


NOTES:
 Based upon the Ordnance Survey map with permission of The Controller of Her Majesty's Stationery Office. © Crown Copyright.
 Aspect Landscape Planning Ltd, West Court, Hardwick Business Park, Noral Way, Banbury OX16 2AF. Licence 100045345



Copyright reserved 0m 2m 4m 8m
 1:200 @ A3

- KEY:**
- Proposed Trees
 - Amenity Grass Mix - Emorsgate EL1 Flowering Lawn Mixture
 - Proposed Ornamental Shrubs
 - Proposed Ornamental Hedge - Maintained at 500mm high
 - Proposed Feature Shrubs
 - Rubber Grass Matting Secured with Pegs and Cable Ties
 Size: 1500 x 1000 mm Recycled Rubber Tiles
 Depth: 23 mm
 See Grass Mats Ltd or similar for further details
 - 5x Broxap Lakeside Seat
 Frame Finish: Cast Iron Black Powder Coated
 Jet Black RAL 9005
 Fixing: Set of 4 Ground Bolts
 Timber: 11 Treated Iroko Slats
 Size: L1800 x W605 x H840mm
 Code: BX 2060
 *2x benches located to central space to be fixed onto resin bound gravel
 - 3x Timber-edged Hoggin Pad for Benches around 'The Square' Perimeter
 Size: L1800 x W650mm minimum.
 *For hoggin detail please refer to Aspect drawing: 6703.PP.1.0
 - 2x Broxap Derby Round Litter Bin
 Finish: Stainless Steel - Standard 240 Grit Dull Polish
 Fixing: Set of 4 Shield Anchor Bolts for installation onto Resin Bound Gravel
 Height: 1110mm
 Width: 580mm
 Capacity: 130 litres
 Code: BX50S 2554
 - 2x Play Area Signage
 Supplier: Wicksteed
 Size: 900 x 600mm
 Shape: Rectangular
 Fitting: 2x Aluminium Posts 1800 mm (1500mm above ground)
 Set in Concrete
 Code: SIGN9060/P
 - Aluminium-edged Daltex Autumn Quartz Resin Bound Gravel
 Size: 2-5mm
 Depth: 15mm
 Width of Footpath: 1500mm
 Also installed under 2x central benches
 - Aluminium Edging
 Product: AluExcel 150mm Edging Flexible (101028)
 Finish: Mill
 Thickness: 4.5mm
 Supplier: Kinley
 - Tegula Setts
 Finish: Heather
 Size: Various x H50mm
 Supplier: Tobermore
 Pattern: Radial
 - Potential Public Arts Feature



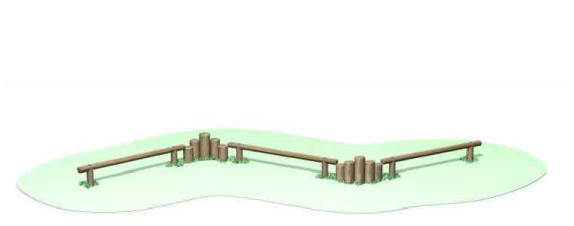
* For detailed planting plans of 'The Square' and surrounding areas, please refer to Aspect drawing: 6703.PP.1.0

Inset plan showing location of LAP:

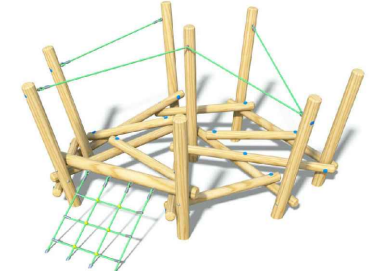


Proposed LAP Equipment:

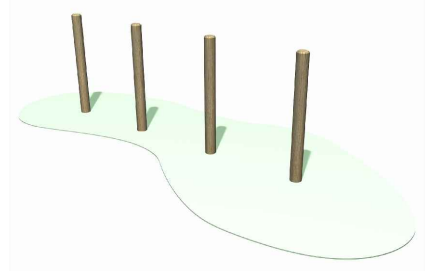
*For equipment installation and fixings please refer to Manufacturer's information



1. Supplier: Wicksteed
 Product: Alpha Trail
 Product Code: LLALP



2. Supplier: Wicksteed
 Product: Pick Up Sticks 1 Climber
 Product Code: PICUS 1



3. Supplier: Wicksteed
 Product: Chicane
 Product Code: CHC04



Examples of planting style within play area using grasses as a sensory device for play and allowing children to run between the planting blocks.

REV	DATE	NOTE	Drawn	Chk'd
D	24.10.22	Updated planting to officer knee rail comments	CW	CW
C	02.09.22	Updated planting to officer site wide comments	CW	CW
B	17.12.21	Updated plans to revised layout	IC	CJ
A	03.06.21	Updated plans to revised layout	IC	CJ



TITLE
 Church Road, Otham, Maidstone
 Play Space Detail - LAP 2 (The Square)

CLIENT
 Bellway Homes Ltd (Kent)

SCALE	DATE	DRAWN	CHK'D
1:200 @ A3	MAR 2021	BS	CJ
DRAWING NUMBER	REVISION		
6703.PS.2.1	D		