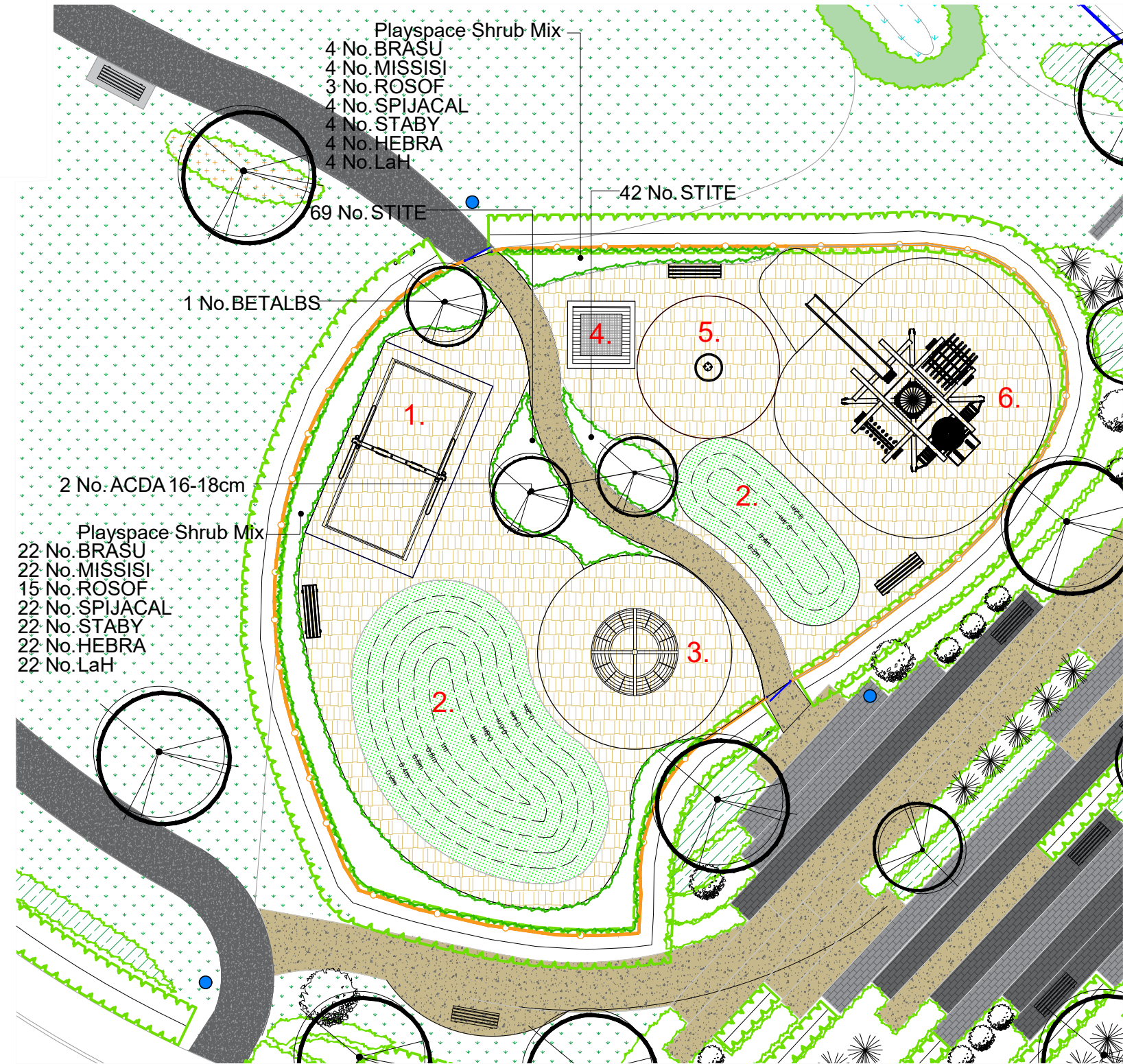


KEY:

- Proposed Trees
- Wicksteed 'SowGreen' Artificial Grass Laid to Manufacturer's Specification
- Proposed Ornamental Shrubs
- Proposed Ornamental Hedge - Maintained at 1000mm high
- Proposed 1.2m High Anti Trap Bow Top Fencing Finished in Black Galvanised Steel. Posts: 60.3mm dia Circular Hollow Section Rails: 50 x 25mm Post centres: 2797mm Pales: 19mm diameter Gate posts: 80 x 80mm Total Length: Approximately 93m Supplier: Jacksons Fencing
- 2x 1.2m High x 1.109m Single Bow Top Self Closing Gate With Posts Finished in Black Galvanised Steel. Gate Fitted 50mm Above Ground For Clearance. Supplier: Jacksons Fencing
- 3x Broxap Lakeside Seat Frame Finish: Cast Iron Black Powder Coated Jet Black RAL 9005 Fixing: Set of 4 Ground Bolts into Wetpour and Sub-base Timber: 11 Treated Iroko Slats Size: L1800 x W605 x H840mm Code: BX 2060
- 2x Broxap Derby Round Litter Bin Finish: Stainless Steel - Standard 240 Grit Dull Polish Fixing: Set of 4 Shield Anchor Bolts for Installation onto hard surface Height: 1110mm Width: 580mm Capacity: 130 litres Code: BX50S 2554
- 2x Play Area Signage Supplier: Wicksteed Size: 900 x 600mm Shape: Rectangular Fitting: 2x Aluminium Posts 1800 mm (1500mm above ground) Set in Concrete Code: SIGN9060/P
- Play Area Surface: Wicksteed Eco-Tumble Colour: Earth Brown Edging: 50 x 150mm Precast Concrete Edging, Located to Edge of Play Area and adjacent Planting Beds. Laid onto the existing grass/soil surfaces without an engineered base. Depth and build up subject to preparation in accordance with Wicksteed's specific recommendations.
- Aluminium-edged Daltex Amber Gold Resin Bound Gravel Size: 1.4mm Depth: 15mm Width of Footpath: 1500mm Also installed under 2x central benches
- Aluminium Edging Product: AluExcel 150mm Edging Flexible (101028) Finish: Mill Thickness: 4.5mm Supplier: Kinley
- Play Mound Gradient and Height to Constructed in Line with Contours Indicated on Plan



- Playspace Shrub Mix
- 22 No. BRASU
 - 22 No. MISSISI
 - 15 No. ROSOF
 - 22 No. SPIJACAL
 - 22 No. STABY
 - 22 No. HEBRA
 - 22 No. LaH

| Trees | | | | | |
|----------|--------------|--|---|---------|----------|
| Number | Abbreviation | Species | Specification | Girth | Height |
| 2 | ACDA | Acer davidii | Advanced Nursery Stock :Clear Stem min. 200 :RB | 16-18cm | 4.0-4.5m |
| 1 | BETALBS | Betula albosinensis var. septentrionalis | Advanced Nursery Stock: Multistem 3 stems :Clear Stem min. 150 :C | | 3.5-4.0m |
| Total :3 | | | | | |

| Grasses | | | | | |
|---------|--------------|------------------|---------------|----------|------------------|
| Number | Abbreviation | Species | Specification | Pot Size | Density |
| 111 | STITE | Stipa tenuissima | Full Pot | 10L | 5/m ² |

| Playspace Mix | | | | | | |
|---------------|--------------|----------------------------------|-----------------------|--------|------------------|-----------|
| Number | Abbreviation | Species | Specification | Height | Pot Size | Density % |
| 26 | BRASU | Brachyglottis 'Sunshine' | Bushy :3 brks 30-40cm | 5L | 3/m ² | 15% |
| 26 | HEBRA | Hebe rakaiensis | Bushy :3 brks 30-40cm | 5L | 3/m ² | 15% |
| 26 | LaH | Lavandula angustifolia 'Hidcote' | Bushy :3 brks 30-40cm | 5L | 3/m ² | 15% |
| 26 | MISSISI | Miscanthus sinensis 'Silberturm' | Full Pot | 5L | 3/m ² | 15% |
| 18 | ROSOFF | Rosmarinus officinalis | Bushy :3 brks 30-40cm | 5L | 3/m ² | 10% |
| 26 | SPIJACAL | Spiraea japonica 'Candle Light' | Bushy :3 brks 30-40cm | 5L | 3/m ² | 15% |
| 26 | STABY | Stachys byzantina 'Big Ears' | Full Pot | 5L | 3/m ² | 15% |
| Total :174 | | | | | | |

* For detailed planting plans of 'The Central Green' and surrounding areas, please refer to Aspect drawing: 6703.PP.1.0

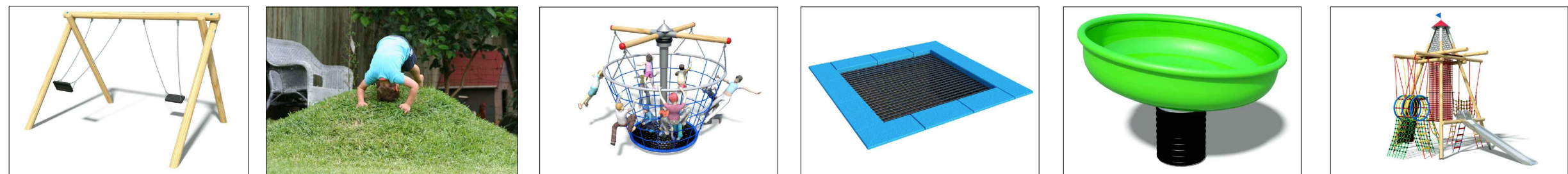
Inset plan showing location of LEAP:



Examples of planting style within play area using grasses as a sensory device for play and allowing children to run between the planting blocks.

Proposed LAP Equipment:

*For equipment installation and fixings please refer to Manufacturer's information



1. Supplier: Wicksteed Product: 2.4m Log Swing, Flat Seats Product Code: LSW24F
2. Supplier: Wicksteed Product: Grass Play Mound x2 500mm & 1000mm high, Gradient: 1 in 3 Surface: Wicksteed 'SowGreen' Artificial Grass
3. Supplier: Wicksteed Product: Basket Spinner Product Code: NET-BASK
4. Supplier: Wicksteed Product: Trampoline 1.5m Product Code: 6030-080
5. Supplier: Wicksteed Product: Rock 'n' Bowl Dual Axis Roundabout Product Code: 6020-071
6. Supplier: Wicksteed Product: Swashbuckler's Climber Product Code: NET-SWAS

| REV | DATE | NOTE | Drawn | Chk'd |
|-----------|----------|--|-------|-------|
| C | 02.09.22 | Updated planting to officer site wide comments | CW | CW |
| B | 17.12.21 | Updated plans to revised layout | IC | CJ |
| A | 03.06.21 | Updated plans to revised layout | IC | CJ |
| REVISIONS | | | Drawn | Chk'd |



TITLE
Church Road, Otham, Maidstone
Play Space Detail - LEAP (The Central Green)

CLIENT
Bellway Homes Ltd (Kent)

| SCALE | DATE | DRAWN | CHK'D |
|----------------|----------|----------|-------|
| 1:200 @ A3 | MAR 2021 | BS | CJ |
| DRAWING NUMBER | | REVISION | |
| 6703.PS.2.4 | | C | |