



EAST ELEVATION



SOUTH ELEVATION



NORTH ELEVATION



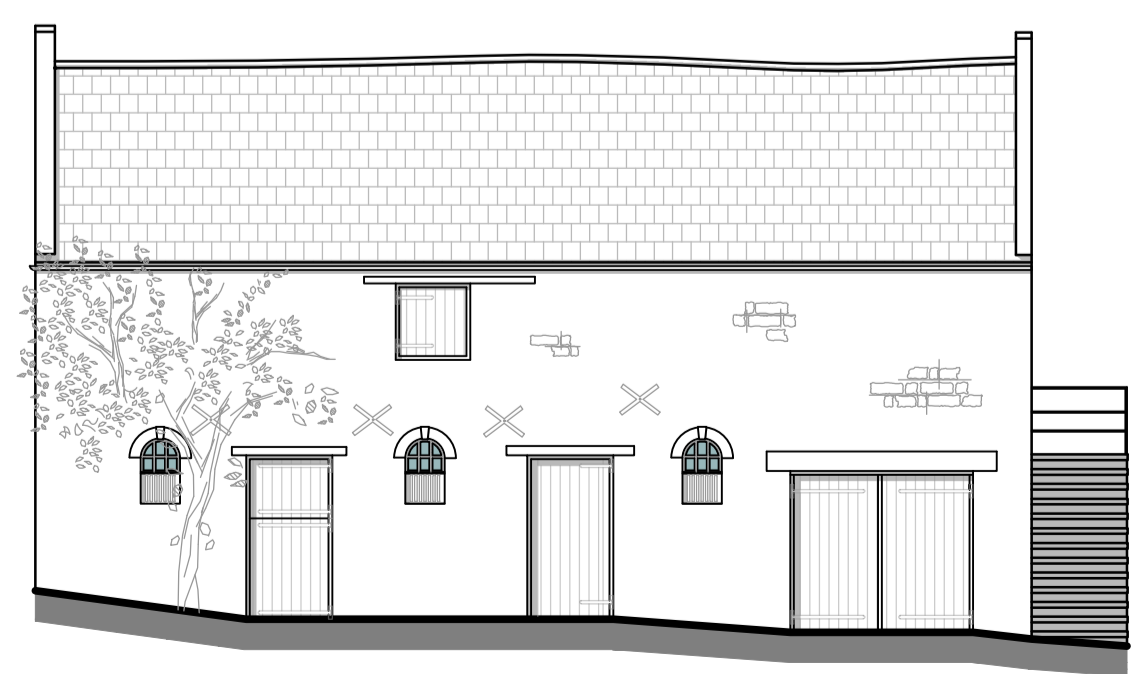
WEST ELEVATION



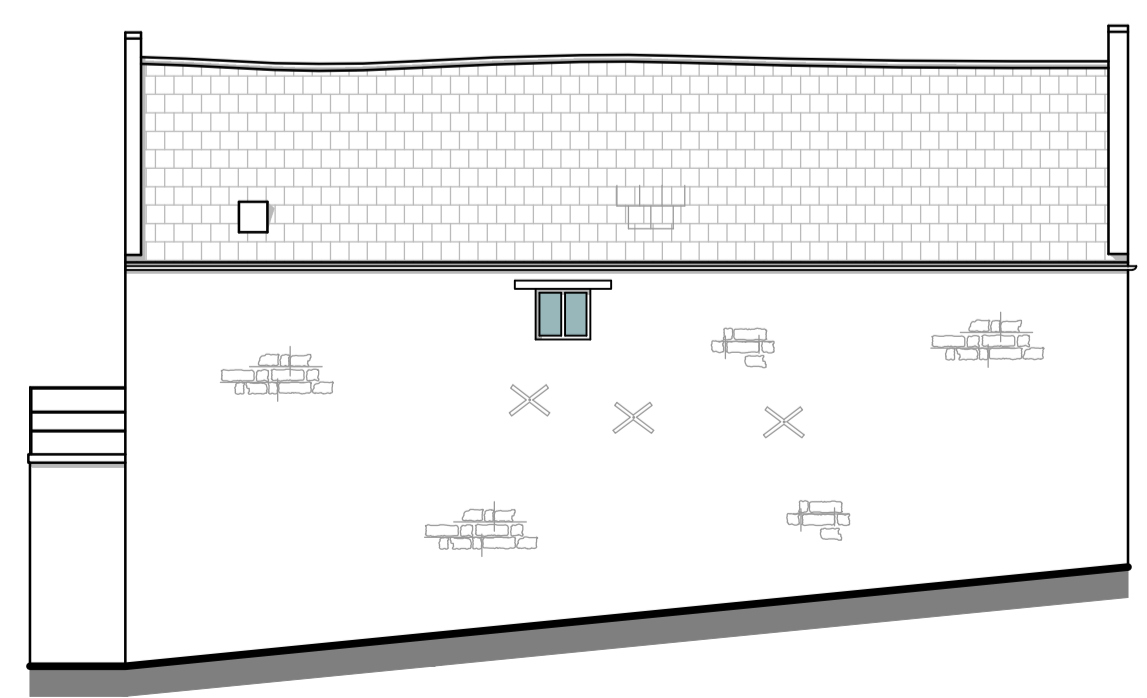
SECTION A-A



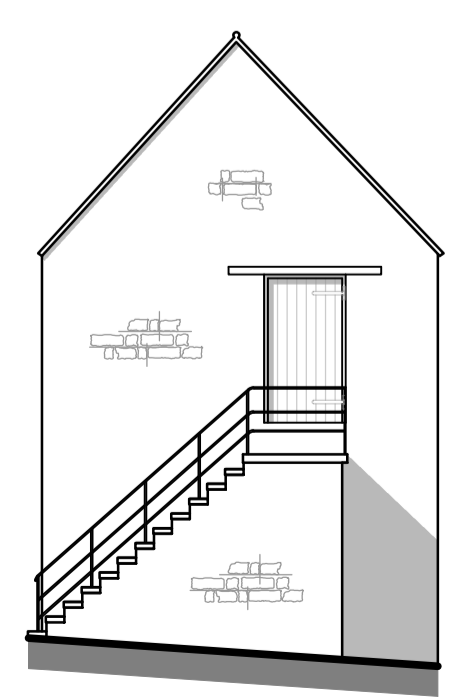
SECTION B-B



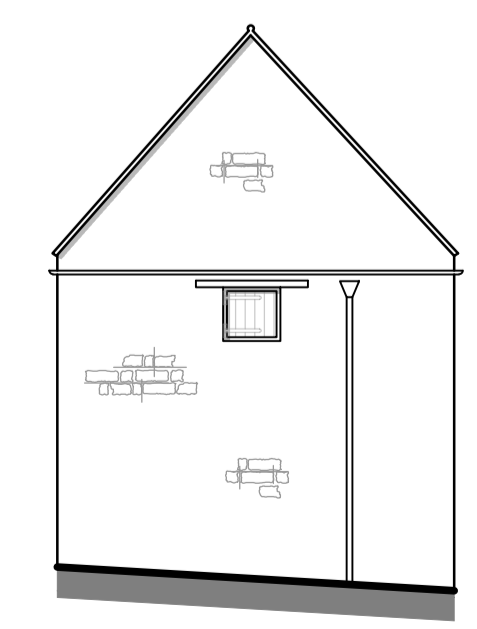
STABLE SOUTH ELEVATION



STABLE NORTH ELEVATION



STABLE EAST ELEVATION



STABLE WEST ELEVATION

Revisions	
Project	WING HOUSE CHURCH STREET WING LE15 8RS
Drawing	EXISTING
ELEVATIONS & SECTIONS	

**Harris
McCormack
Architects**
harrismccormackarchitects.co.uk

ArchHaus Peterborough Road Wansford PE8 6JN
t 01780 433 334 architects@harrismccormack.co.uk

Date	Scale	Drawn
22/12/22	1:100@A1	AF
Job No.	Drawing No.	Revision
20-906	(01)003	-

THIS DRAWING IS THE COPYRIGHT OF HARRIS MCCORMACK ARCHITECTS. If you are in doubt with any of the information on this drawing, ask for it to be verified. COLOURS SHOWN ARE INDICATIVE. This drawing is the copyright of Harris McCormack Architects.