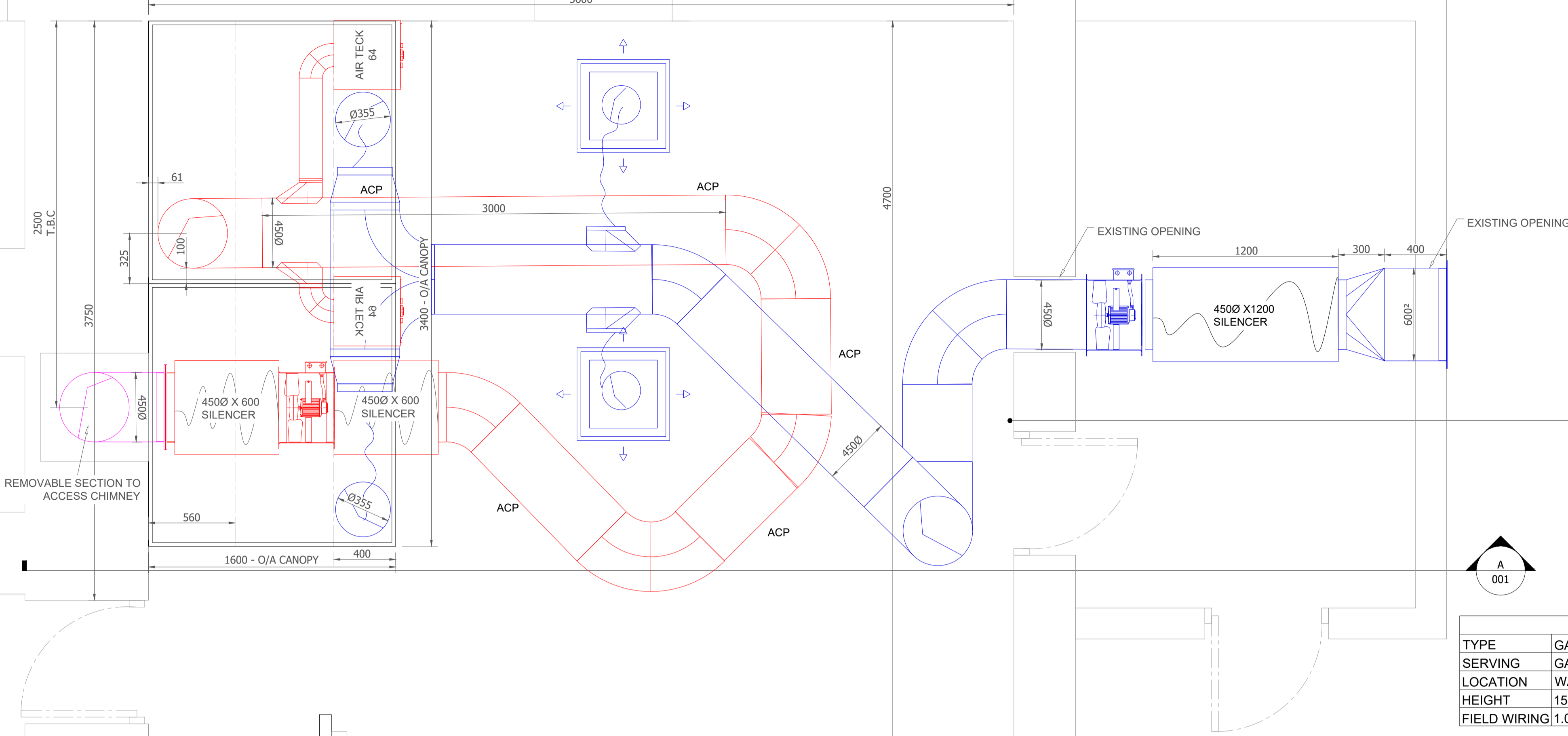


**1 PLAN - INTERNAL VIEW**  
SCALE - 1:20

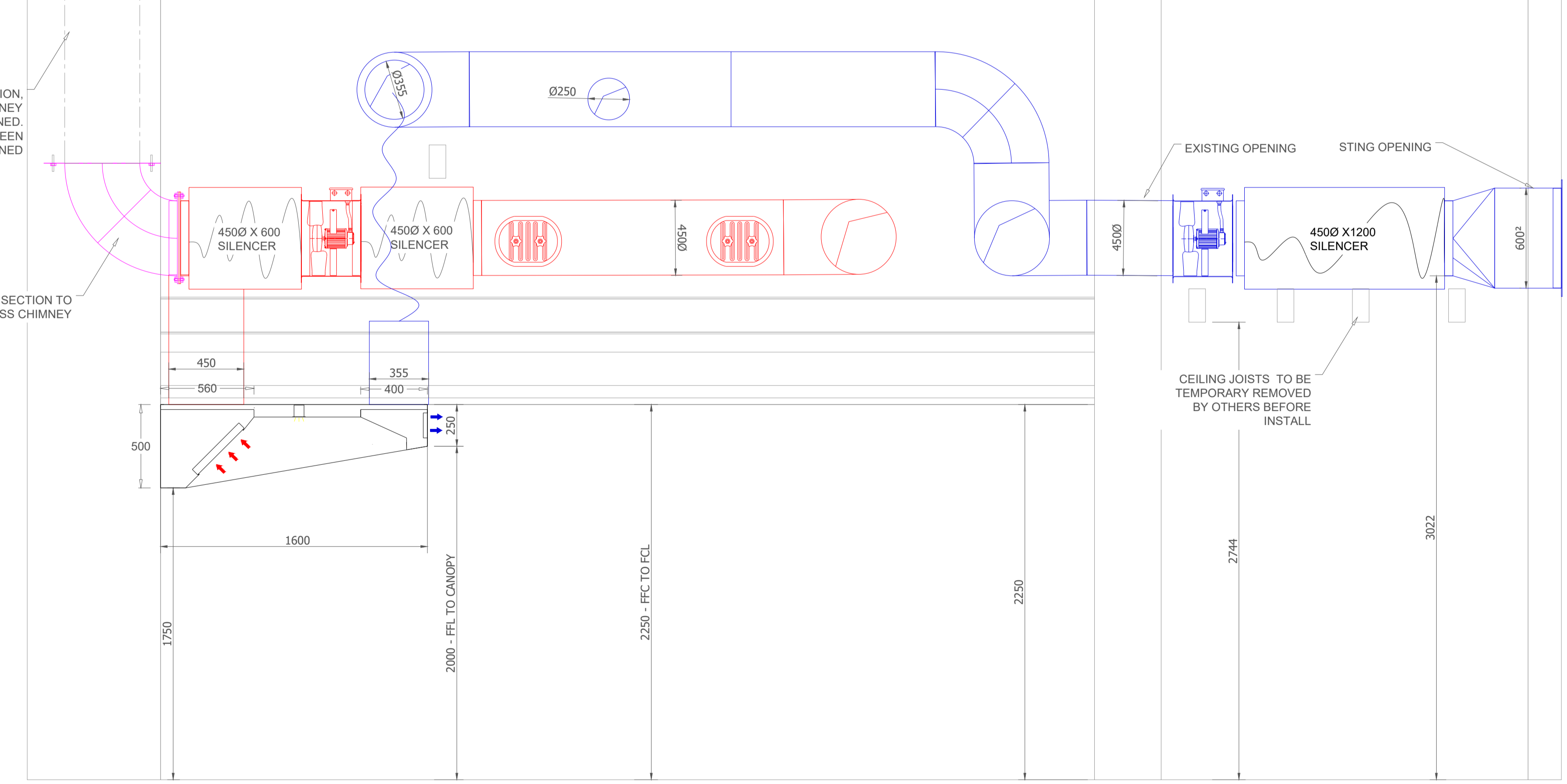


Canopy Details	
Model	Combined Air wall with full front perforation
Size	3400mm x 1600mm x 250/500mm
Extract Rate and Pressure Drop	120Pa
Extract Spigots	450mm dia
Supply Rate and Pressure Drop	80Pa
Supply Spigots	355mm dia
Filters	Type 2 495mm x 395mm
Lighting	9W LED Downlight IP65 COOL White & Chrome Bezel

Fan Details	
Kitchen Extract	
Model	Woods MaxFan 45
Air Flow Rate	1.23m <sup>3</sup> /s
Spigots Air Flow Rate	1.23m <sup>3</sup> /s
System Pa	250Pa
Kitchen Make-Up Air	
Model	Woods MaxFan 45
Air Flow Rate	1.04m <sup>3</sup> /s
Spigots Air Flow Rate	0.17m <sup>3</sup> /s & 0.34m <sup>3</sup> /s from ceiling grills

BY SITE ELECTRICIAN	
TYPE	GAS E-STOP
SERVING	GAS E-STOP - 02
LOCATION	WALL
HEIGHT	1500 FFFL
FIELD WIRING	1.0mm FLEX

**2 HEIGHT ELEVATION - INTERNAL VIEW A-A**  
SCALE - 1:20



BY SITE ELECTRICIAN	
TYPE	20AMP ROTARY ISOLATOR 3PH
SERVING	KEF - 01
LOCATION	CONTROLS WALL
HEIGHT	2050MM FFFL
FIELD WIRING	-

BY CK DIRECT	
TYPE	INVERTER 1PH
SERVING	KEF - 01
LOCATION	CONTROLS WALL
HEIGHT	2050MM FFFL
FIELD WIRING	-

BY CK DIRECT	
TYPE	INVERTER 1PH
SERVING	KMF - 01
LOCATION	CONTROLS WALL
HEIGHT	1750MM FFFL
FIELD WIRING	-

BY SITE ELECTRICIAN	
TYPE	20AMP ROTARY ISOLATOR 3PH
SERVING	KMF - 01
LOCATION	CONTROLS WALL
HEIGHT	1750MM FFFL
FIELD WIRING	-

BY SITE ELECTRICIAN	
TYPE	GAS E-STOP
SERVING	GAS E-STOP - 01
LOCATION	WALL
HEIGHT	1500 FFFL
FIELD WIRING	1.0mm FLEX

BY SITE ELECTRICIAN	
TYPE	13AMP SWITCHED FUSE SPUR
SERVING	KEF - 01
LOCATION	CONTROLS WALL
HEIGHT	1500 FFFL
FIELD WIRING	-

BY CK DIRECT	
TYPE	Merlin CT1250 Gas interlock panel
SERVING	KGP - 01
LOCATION	CONTROLS WALL
HEIGHT	1500MM FFFL
FIELD WIRING	-

BY SITE GAS ENGINEER	
TYPE	GAS SOLENOID VALE
SERVING	GSV - 01
LOCATION	GAS PIPE IN
HEIGHT	-
FIELD WIRING	1.0mm FLEX - FROM CONTROLS WALL
GAS SOLENOID VALVE SUPPLIED BY CKD FITTED BY MAIN CONTRACTOR/CLIENT	

**INSTALLATION NOTES**  
 • REVIEW ALL DETAILS BEFORE STARTING INSTALLATION

**CKDirect**  
 Tel: 01733 230378  
 Email: info@ckdirect.co.uk Web: www.ckdirect.co.uk

This drawing and all information herein is confidential and belongs to CK Direct Duct and Maintenance LTD. It is disclosed in confidence on terms that it will not be disclosed to any third party, used, sold, loaned, licensed, or reproduced in whole or in any part in any manner or form for manufacturing, tendering or for any other purpose without the written permission of CK Direct Duct and Maintenance LTD. The copyright is retained by CK Direct Duct and Maintenance LTD.

© CK Direct Duct and Maintenance LTD

**Colour Line Legend**

- Kitchen Extract
- Kitchen Ambient MUA
- Kitchen Tempered MUA
- General Extract
- General Supply Air
- Toilet Extract
- Toilet Supply

**Key Parts Legend**

- VCD - Volume Control Damper
- KEF - Kitchen Extract Fan
- KMF - Kitchen MUA Fan
- MUF - MUA Filter
- ACP - Access Cleaning Panel
- FDP - Fire Damper
- ATT - Attenuator
- FDC - Flexible Duct Connector
- AVM - Anti-Vibration Mounts

Revision Information		Drawing No and Revision		SLW177120-DRG-001-R1 APPROVAL	
Revision No	Revision Date	Revision Information			
R1	11/01/2022	First Issue			

Client	
Kings Arms	

Drawing Title	
ventilation Services & setting out	

Project Address	
The Green, 28 The Green, Shouldham, King's Lynn PE33 0BY	

Project Title	
SLW177120 Kings Arms	

Issue Date	
11/01/2022	

Scale - Paper Size	
1:20 - A1	

Drawn By	
Simon Locke-Wheaton	