

Vegetation protection
All existing vegetation to be retained is to be protected in line with the recommendations of BS5837. Protection shall remain in place until site works are complete.

Tree and Shrub Planting

Site Preparation for planting
Existing vegetation to be removed.
Soil - Existing soil to be used on site where possible.
The existing soils (subsoil and topsoil) are expected to be adequate for planting and should be to the following minimum depths:
Hedge (200mm topsoil)
Should depths of soils not fall within these minimum standards then depths are to be increased using imported soil to BS3882 or existing soil from elsewhere on site. Soil to be rotavated to a minimum depth of 450mm, raked and graded prior to planting.

Planting Generally:
Planting shall be carried out in accordance with BS4428:1989 General Landscape Operations.
Plant material shall be provided in accordance with BS3936 Part 1:1992 Nursery Stock Specification For Trees and Shrubs. Deciduous stock to be planted from 1st November to 31st March. Allow for earth to new banks to settle before planting. Do not plant if ground is water logged or frozen.
Clear all weeds and treat with suitable herbicide prior to planting. Care to be taken with clearance and any herbicide use to area adjacent to existing hedges/trees or water bodies.
Prevent roots from drying out prior to planting. Avoid planting in very dry, windy conditions to avoid root dessication.

Hedge:
Plant planting mix in groups of 3, 5 and 7 no. plants of same species in double staggered row on top of the bank at 500mm centres.
Water in new transplants immediately after planting and continue to water as necessary through the first two growing seasons, during dry spells, to ensure good establishment.
Plant protection: spiral guard and cane, min. 600mm high, where necessary. NB not required for Holly.

Tree Protection:
- Avoid damage by rabbits/rodents with plastic tube tree guard and stake, min. 0.6m high, where necessary.

Maintenance for planting
Weed Control shall be carried out in accordance with BS4428:1989 General Landscape Operations as follows:
Water in new plants immediately after planting and continue to water as necessary through the first two growing seasons, especially during dry spells, to ensure good establishment.
Regularly inspect newly planted areas and remove weeds until new plants are well established (2-3 growing seasons). Following planting establishment checks will be undertaken annually during August/September for a period of 5 years. Any plants found to be dead, dying or diseased shall be removed and replaced as per the above specification during the following planting season.

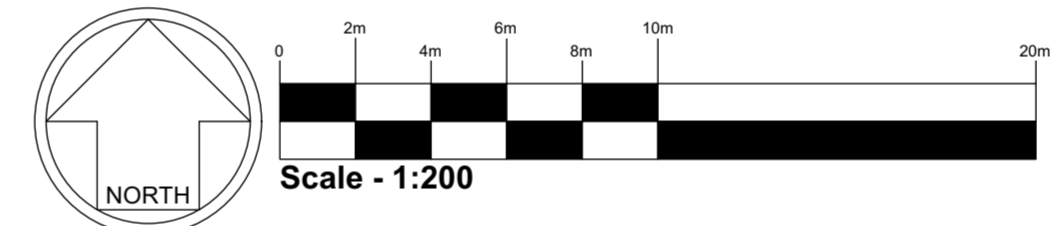
Grass Seeding
Site Preparation for Wildflower grass seeding
Existing vegetation to be removed by hand and weeds removed by cultivation.
Topsoil to be removed and used elsewhere on site.
Plough to bury surface vegetation, rake to a medium till and roll to produce a firm surface.

Maintenance
Yr 1: Mow newly sown meadow regularly throughout the first year of establishment to a height of 40-60mm, removing cuttings if dense. Carefully dig out or spot treat any residual perennial weeds such as docks.

Yr2 +: Unwanted perennial weeds (docks, thistles) controlled by occasional spot treatment with herbicide. To control scrub and bramble development, tussocky areas need cutting every 2-3 years between October and February. Cut on a rotational basis so that no more than half the area is cut in any one year leaving part as an undisturbed wildlife refuge.



PROPOSED SITE LANDSCAPE PLAN
SCALE: 1:200



KEY

Existing trees: to be retained

Tree Planting
Standard tree planting, single straight main trunk cleared of lower branches for the first 1.8m. Trees staked and tied

	Stock type	Stock type	Girth	Height
Prunus avium	Bird Cherry	rootballed	Heavy Std	12-14cm 3.0m - 4.0m
Acer campestre	Field Maple	rootballed	Heavy Std	12-14cm 3.0m - 4.0m
Sorbus aucuparia	Rowan	rootballed	Heavy Std	12-14cm 3.0m - 4.0m

Turf and Stone Faced Hedgebank
Hedgerow planted in double staggered row at 5 plants per lin.m.

	%	type	stock	height
Acer campestre	15%	BR	1+1	40-60cm
Prunus spinosa	10%	BR	1+1	40-60cm
Crataegus monogyna	40%	BR	1+1	40-60cm
Corylus avellana	15%	BR	1+1	40-60cm
Sambucus nigra	5%	BR	1+1	40-60cm
Ligustrum vulgare	5%	CG	2L	20-40cm
Quercus robur	10%	BR	1+1	40-60cm

Ornamental Shrub Beds
Bee and butterfly friendly planting mix, to ornamental shrub beds

Name	stock	stock	ultimate height
Lavandula angustifolia 'Hidcote'	Lavender	CG 3L pot	100cm
Lavandula x intermedia 'Alba'	Lavender	CG 3L pot	50cm
Buddleja x alternifolia Unique (Pmoore12)	Dwarf Buddleja	CG 2L pot	100cm
Buddleja davidii 'Ellen's Blue'	Dwarf Buddleja	CG 2L pot	150cm
Origanum vulgare	Marjoram	CG 1L pot	100cm
Ribes sanguineum 'Brocklebankii'	Flowering currant	BR 60-90cm	120cm
Rosmarinus officinalis 'Roseus'	Rosemary	CG 3L pot	100cm
Salvia officinalis	Sage	CG 1L pot	30cm
Thymus vulgaris	Thyme	CG 1L pot	50cm
Viburnum tinus 'Eve Price'	Viburnum	CG 3L pot	150cm

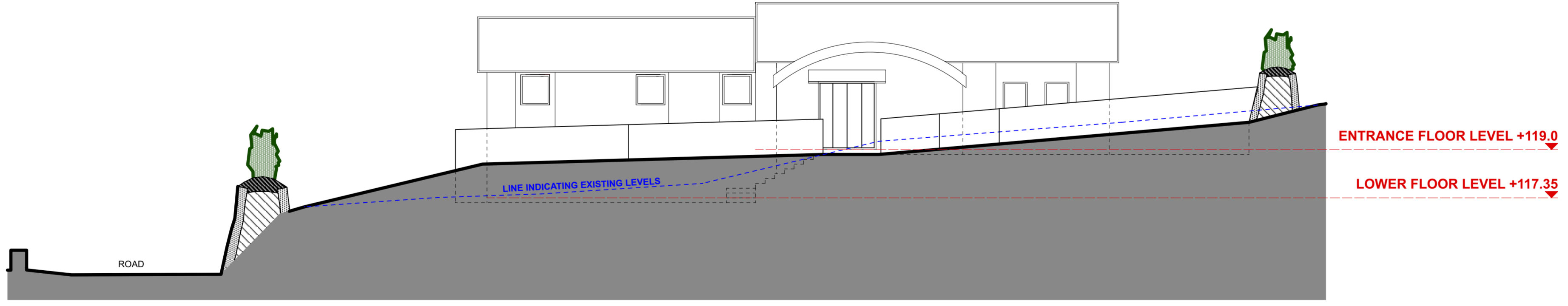
Domestic Garden:
Laid to grass seed / turfed lawn

New Driveway:
Tarmac driveway & vehicle turning and manoeuvring areas

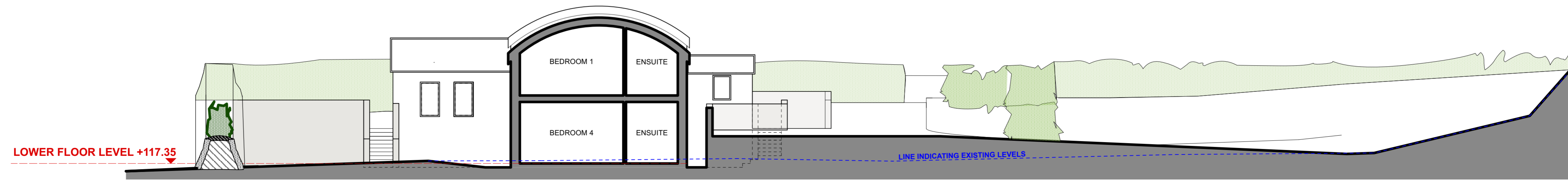
Block paver surfacing

Paving Slabs

Retaining Walls - stone faced blockwork



PROPOSED SECTION AA
SCALE: 1:100



PROPOSED SECTION BB
SCALE: 1:100

Rev	Date	Comments	Rev	Ch
P2	16.01.23	minor floor level changes	CS	PL
P1	12.01.23	Planning Issue	CS	PL
B	19.10.22	Amended with client comments & sections added	CS	PL
A	10.10.22	Issued for comment	CS	PL

Ownership
This drawing is copyright of David Wilson Partnership Limited. Permission is to be sought prior to using this document for anything other than what it was initially issued for.

Survey Information
It should be assumed that, no intrusive investigation work has been undertaken by David Wilson Partnership Limited. For example loft spaces not entered, floor boards not lifted, wall coverings not removed, original structural elements not surveyed etc. It should also be assumed that the premises has not been checked for hazardous substances such as High Alkaline Cement, Asbestos, Carbon Monoxide etc.

Planning
Drawings marked as 'Draft Issue' or 'Planning' are not to be used for construction purposes.

Construction
- Build only from 'Construction' drawings, not Planning, Tender or Building Regulations.
- For construction purposes use only figured dimensions.
- Do not scale off this drawing for construction purposes.
- Contractor is responsible for checking all dimensions on site.
- Discrepancies to be reported immediately to David Wilson Partnership Limited and await instruction prior before proceeding.

Record
Services information on David Wilson Partnership Limited Record Issue drawings is based on information provided from sub-contractors and should be assumed as inexact; a survey should be undertaken prior to commencing future works.

Project Title
Old Parsonage Barn

Project Address
The Old Parsonage, Beaford, Winkleigh

Drawing Title
Proposed Site Landscape Plan & Sections

Client Name/Organisation
Mr Rogers

Original Issue Date
10.10.2022

Drawing Number
1522.01.P2

Original Paper Size
A1 Landscape

Drawing Status
PLANNING

Scales
1:200 & 1:100 @ A1

Drawn By
CS

Checked
PL

