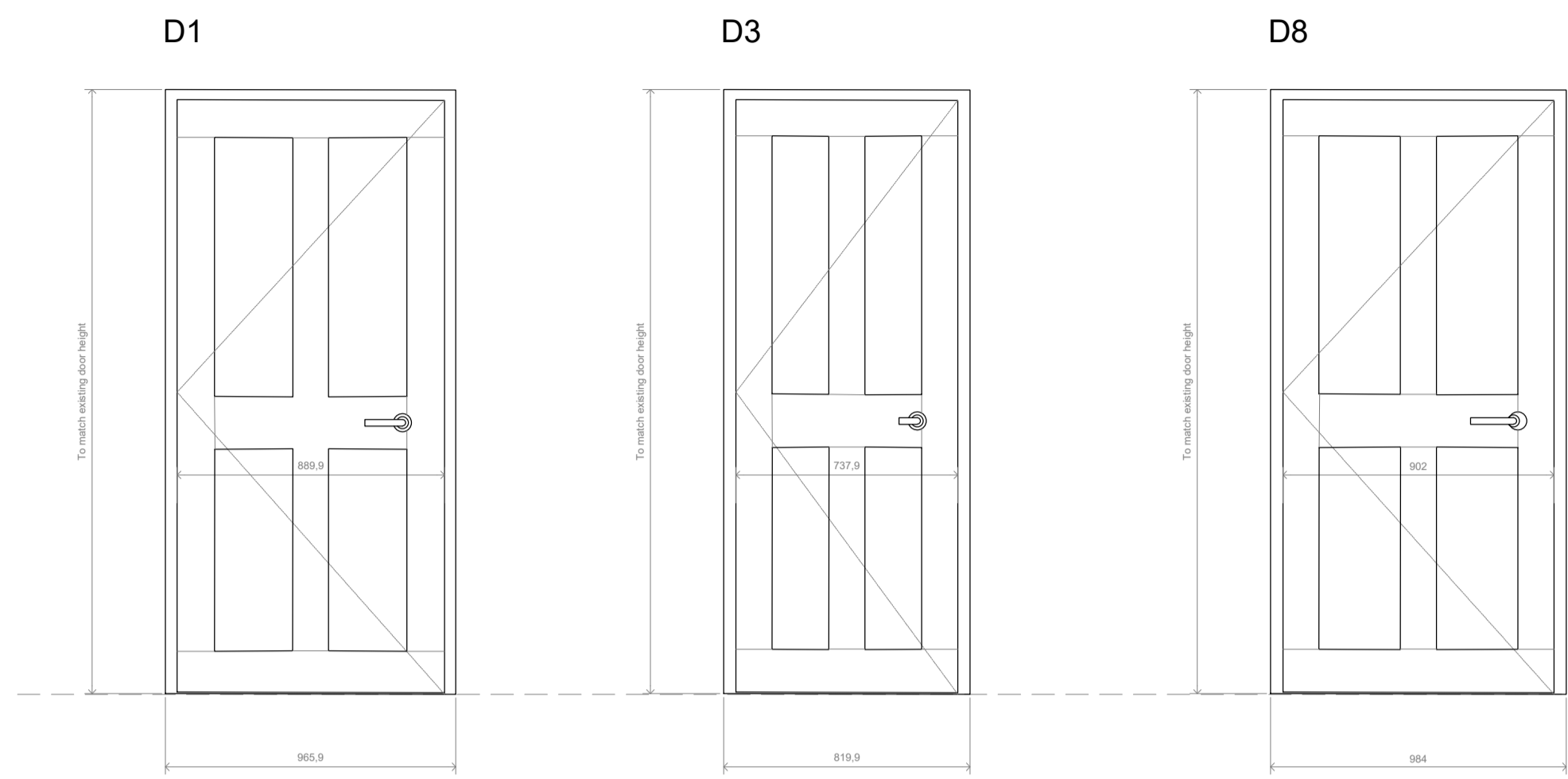


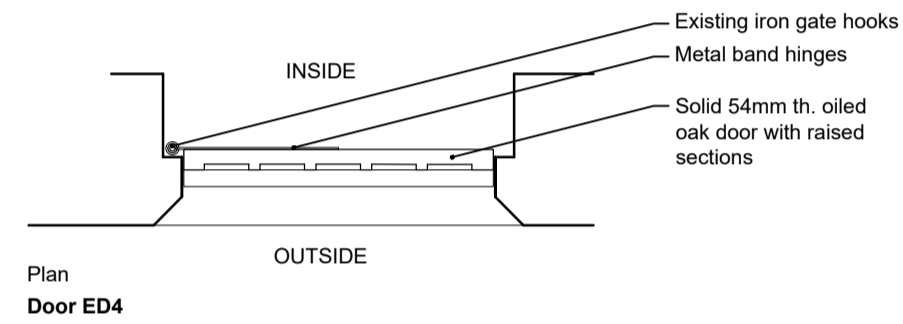
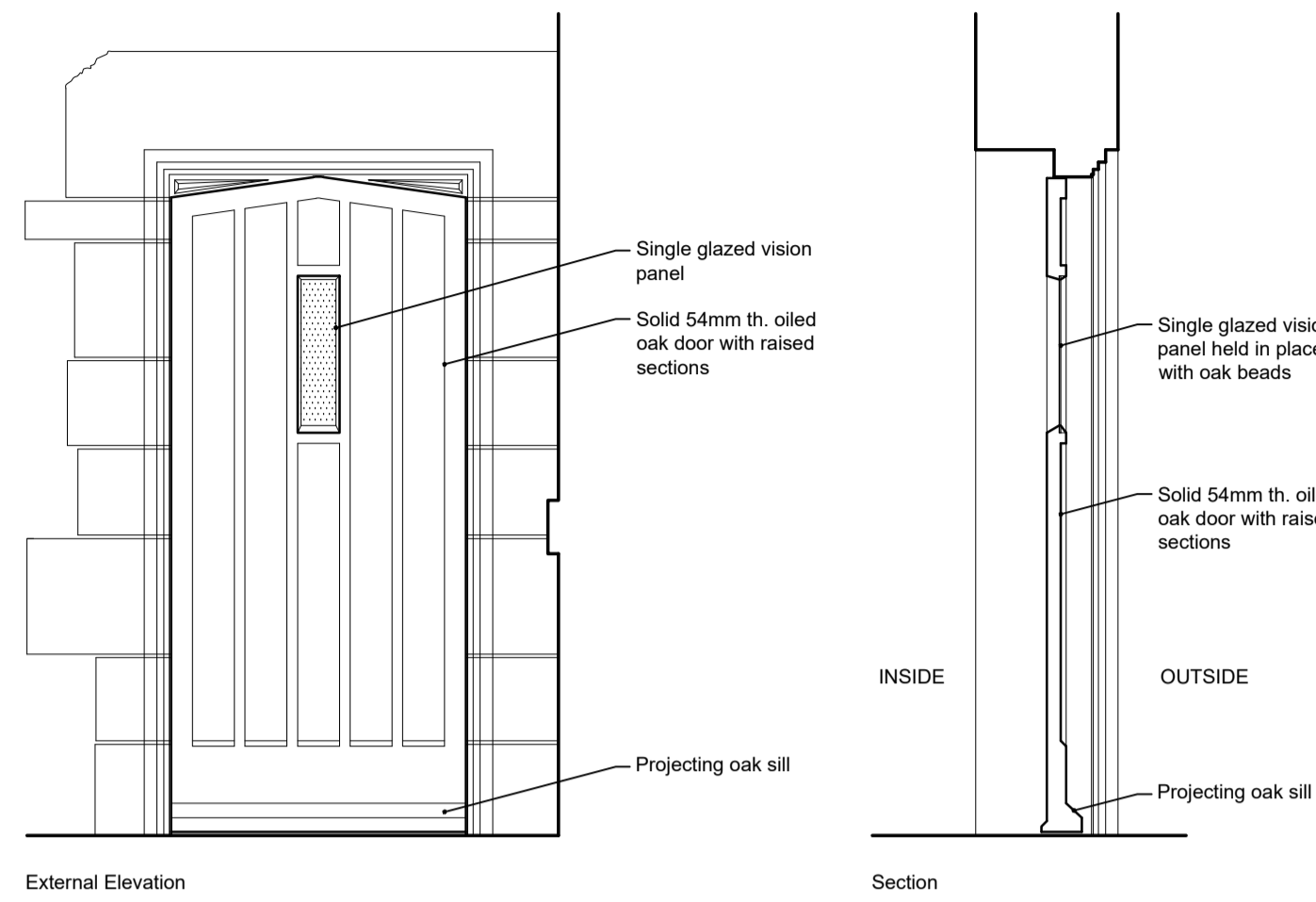
Internal Doors 1: 20



Single door single swing
 Painted timber 4 panel
 • 2 no. Butt hinges.
 All Ironmongery to be brass

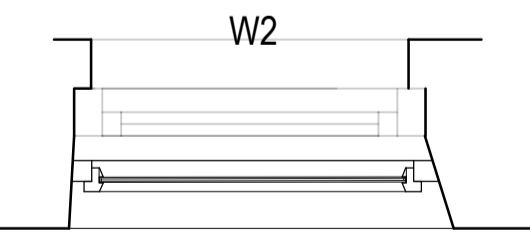
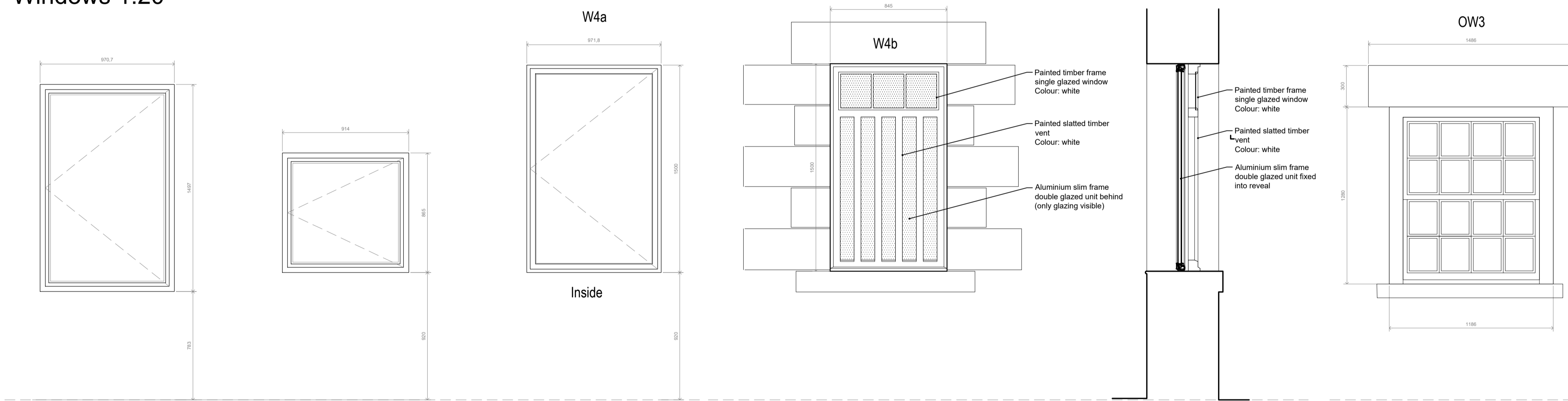
Single door single swing
 Painted timber 4 panel
 • 2 no. Butt hinges.
 All Ironmongery to be brass

Single door single swing
 Painted timber 4 panel
 (Reused D4 WC)
 • 2 no. existing butt hinges.
 All Ironmongery to be reused

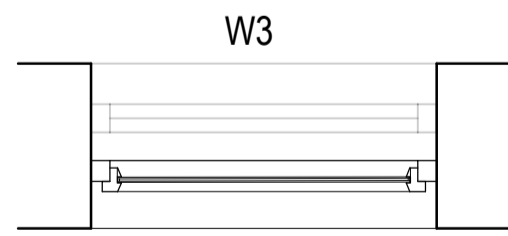


Plan Door ED4

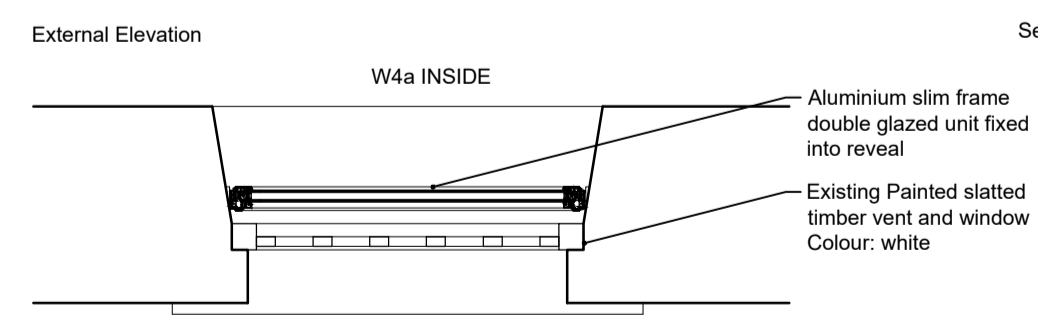
Windows 1:20



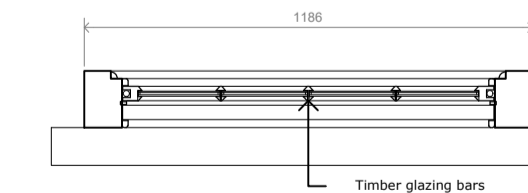
Aluminium Double-glazed casement unit installed behind



Aluminium Double-glazed casement unit installed behind



Plan Window W4



New timber sliding sash window in assumed original outbuilding opening. New stone or timber lintel over.

The window shall be timber double hung sliding sash with a painted finish, and shall be recessed into its openings by approximately 100mm. No trickle vents shall be attached to this window.

Project name
 Simonburn Rectory

Date	Drawn by	Scale
Oct 2022	AJB	1:20@A1
Job no	Drawing no	Rev
1349	TP05	B

For
 A Peile

Drawing title
 Proposed
 Door Schedule

Discrepancies, ambiguities and/or omissions between this drawing and information given elsewhere must be reported to the architect before proceeding.
 This drawing is copyright.
 Dimensions must be checked on site.
 Do not scale off dimensions from this drawing.