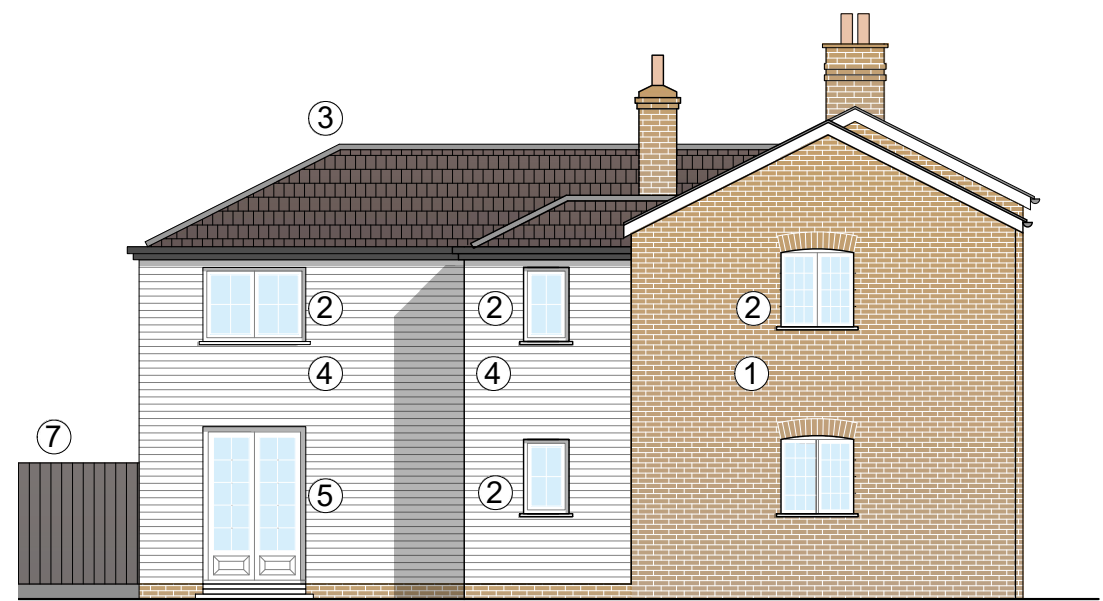




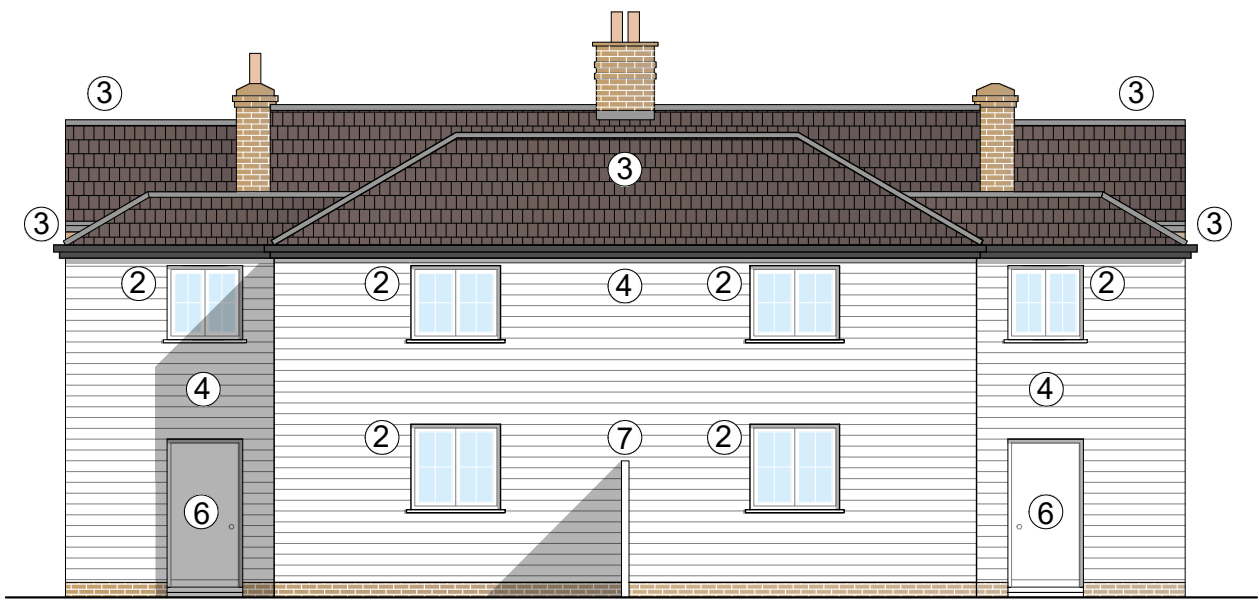
← 1 HOSKINS COTTAGE → ← 2 HOSKINS COTTAGE →

SOUTH ELEVATION



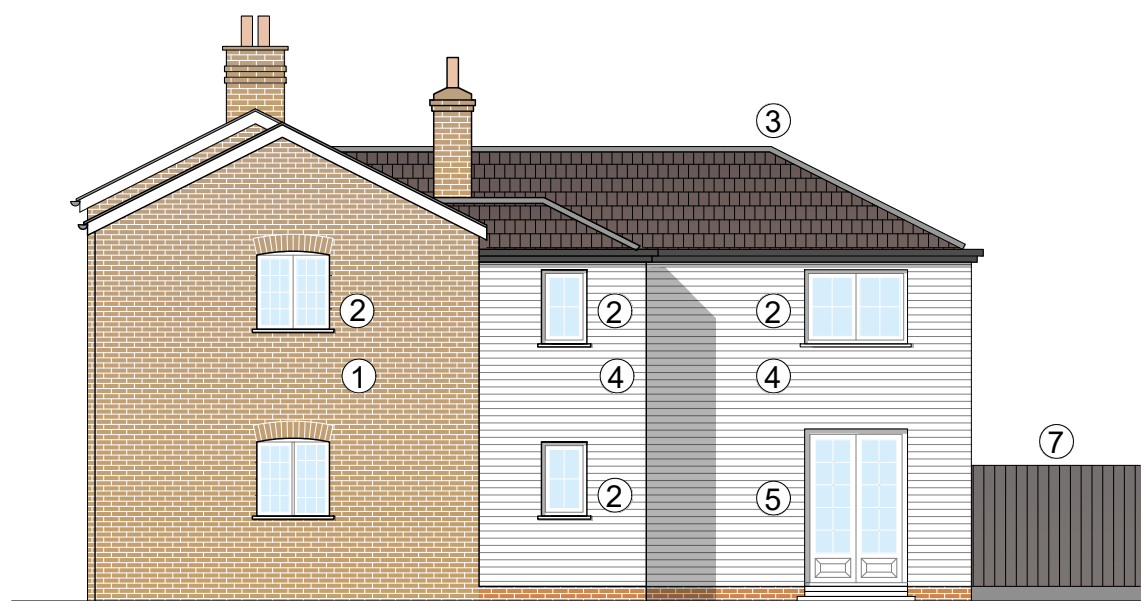
← 1 HOSKINS COTTAGE →

WEST ELEVATION



← 2 HOSKINS COTTAGE → ← 1 HOSKINS COTTAGE →

NORTH ELEVATION



← 2 HOSKINS COTTAGE →

EAST ELEVATION

- | | |
|---|---|
| 1. Handmade stock brickwork, flemish bond and lime pointing to match the existing | 4. White feather edge timber cladding |
| 2. White painted hardwood double hung traditional sash windows | 5. White painted hardwood glazed door to match the existing |
| 3. Natural slates to match the existing | 6. Timber door |
| | 7. Timber fence |



WENTWORTH ANDERSEN

PROJECT DESCRIPTION	1 AND 2 HOSKINS COTTAGE, SAWBRIDGEWORTH, CM21 0LD PROPOSED ELEVATIONS		
SCALE	1/100 - A3	DWG NO.	HC_103
DATE	17.01.2023	DRAWN	WA