



Front Elevation (Brick)
Scale 1:100



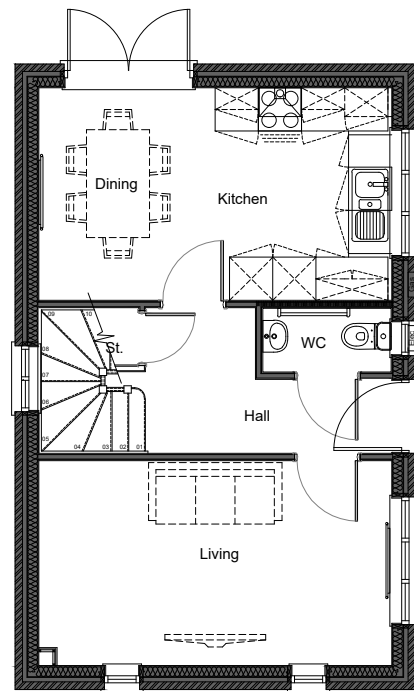
Side Elevation (Brick)
Scale 1:100



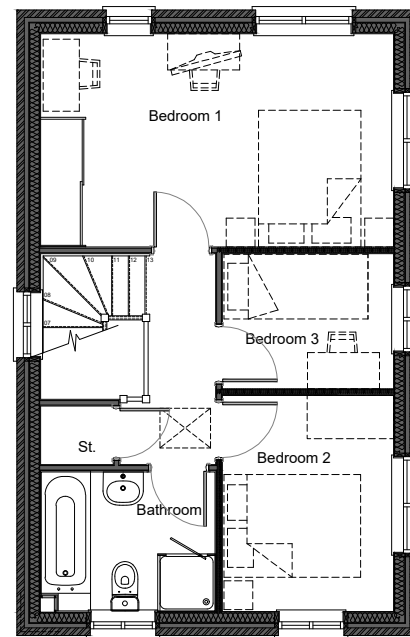
Rear Elevation (Brick)
Scale 1:100



Side Elevation (Brick)
Scale 1:100



Ground Floor Plan
Scale 1:100



First Floor Plan
Scale 1:100



1:100
0 2.5m

PARCEL 2A, WITHAM ST HUGHS, LINCOLNSHIRE
GRANTHAM HOUSE TYPE

ABA PROJECT NUMBER: P22-2456
ABA DRAWING NUMBER: WSH-981-014
DRAWING STATUS: PLANNING

CLIENT: COUNTRYSIDE CPPLC
SCALE: 1:100@A3
DATE: 13-10-2022

REVISION: A
DRAWN BY: ABA
CHECKED BY: ABA

REVISION: A
DRAWN BY: ABA
CHECKED BY: ABA

REV	DATE	DESCRIPTION	REVISED BY	CHECKED BY
A	11.11.22	DIMENSIONS AND ROOF PITCH INDICATIONS REMOVED	CR	CR

ARMSTRONGBURTONARCHITECTS
PART OF PEGASUS GROUP
MILFORD HOUSE, 260 LICHFIELD ROAD, BIRMINGHAM, B74 2UH
T:0121 323 2332 E:INFO@ARMSTRONGBURTON.CO.UK W:ARMSTRONGBURTON.COM

All intellectual Property Rights (including copyright) in or arising out of this drawing and the building works depicted are owned by Pegasus Planning Group Ltd / or Armstrong Burton Architects Ltd and may not be reproduced without a written licence to copy. Pegasus Group accepts no liability for any use of this document other than for its original purpose and by the original client except in circumstances where approval for use has been supplied by Pegasus in writing. © Pegasus Planning Group Limited. © Crown copyright and database rights OS 100042093. Promap Licence number 100020449; EmapiSite Licence number 0100031673; Terms & Conditions @ pegasusgroup.co.uk