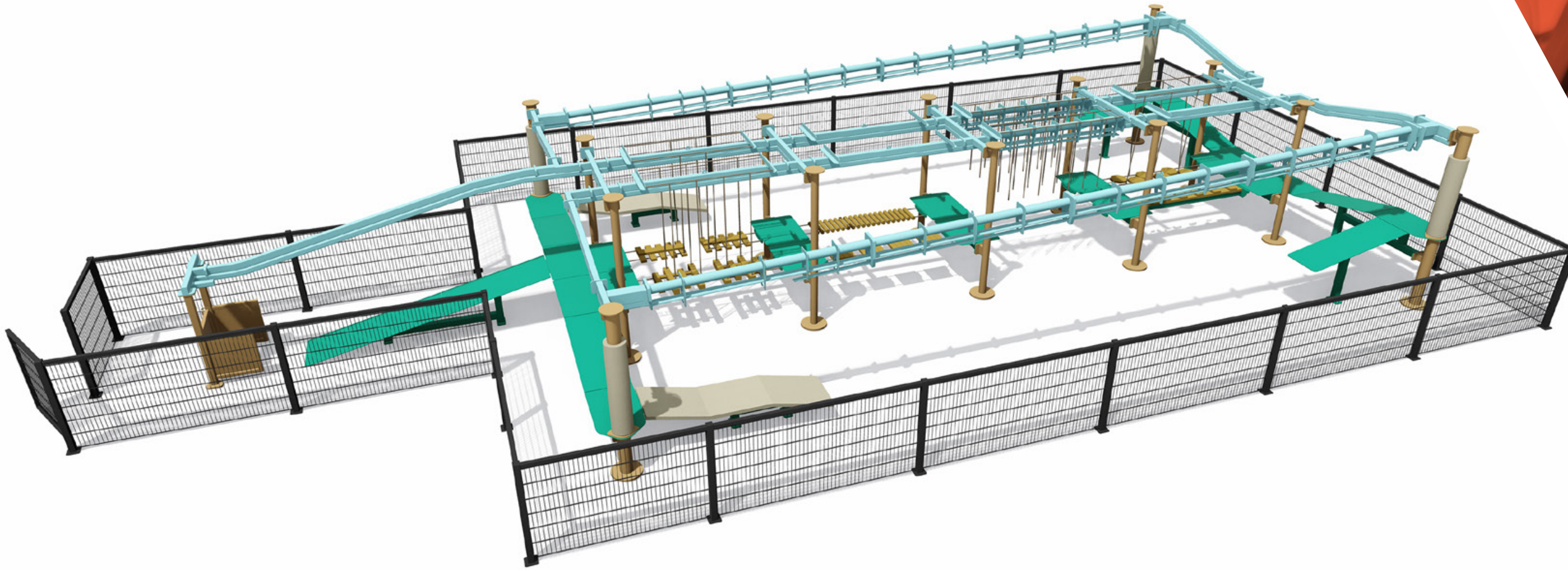


NOTES:

- CAD plan and section needed to confirm design accuracy



IL - Haven Holidays
10 POLE SKY TYKES® WITH (2) SKY RAILS®

**WE BUILD
ADVENTURE**



THE RCI DIFFERENCE

Since 1989, RCI has had a passion for custom manufacturing, installing and servicing innovative adventure products. Whether it's Sky Trail® aerial attractions or Clip 'n Climb® climbing activities, we are dedicated to finding the right product for you, your business and your customers no matter what industry you belong to because to us, you're like family. Giving you the best experience is a priority and our team of highly skilled sales personnel, designers, engineers, installers and account managers are here to provide support through each milestone to ensure you are both kept on budget and informed. To us, your success is important and at the end of the day, nothing beats a smile on the face of a happy customer.

REASONS TO PARTNER WITH RCI



Years of industry experience



Global collaborations with industry frontrunners



Lifetime quality customer support



New revenue streams



Install & training turnkey solutions



Patented, safety focused attractions



Custom design and theming options



Increase in secondary sales



TRUSTED BY GREAT COMPANIES WORLDWIDE

1000+ PRODUCTS IN OPERATION
400+ CLIENTS
33 COUNTRIES
5 CONTINENTS
1 AMAZING EXPERIENCE





PATENTED TECHNOLOGY

A steadfast commitment to safety and a firm adherence to the ever-changing amusement industry standards separates RCI from other adventure product manufacturers. RCI upholds technical safety standards under several governing body organizations, such as those shown below, for all product design, fabrication and installation.



RCI makes every effort to include the very best, latest and safest technology in our designs and employ redundant systems where applicable to ensure every single participant is kept secure while they have fun.

SINGLE REDUNDANT SLINGLINES

A lanyard that connects a participant's harness with their trolley slider assembly. The slingline uses dual webbing for redundancy and utilizes a series of webbing loops to allow for adjustment to fit each participant's specific height.

FIVE POINT HARNESS

A full body harness that adjusts in the back, on the legs, as well as on the hips to create maximum security for participants who choose to experience the Sky Trail®, Sky Tykes® or Clip 'n Climb® attractions.

GATE SYSTEM (SKY RAIL®)

Ensures that only one guest can ride the Sky Rail® at a time, that guests cannot ride the Sky Rail® before the brake system is reset and prevents guests from walking into the landing path of guests riding the Sky Rail®.

PASSING BELAY SYSTEM

Overhead tracking system with column rings that allow guests to pass each other and to traverse the course in any path they choose.

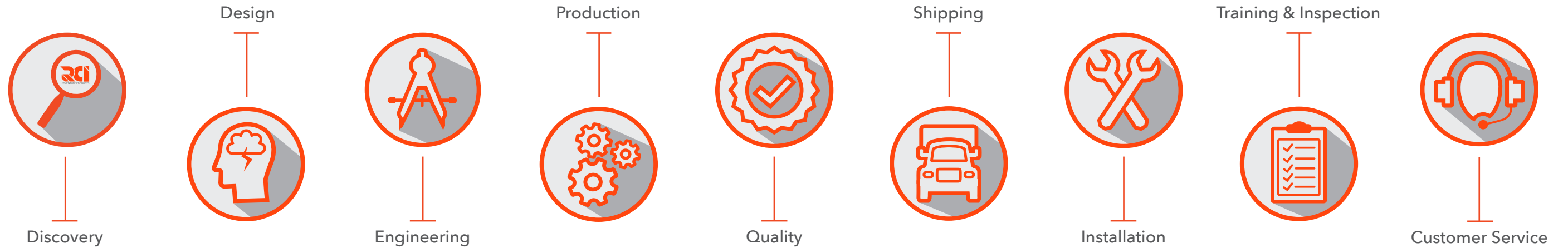
TROLLEY SLIDER ASSEMBLY

The slingline's redundant slider assembly can only be inserted or taken out of the track at the entrance/exit of the Sky Trail® or Sky Tykes® course.

ZIG ZAG TRACKING

Prevents participants from sliding uncontrolled down inclines.

ENVISION THE FUTURE WITH RCI



A representative works with you to kickstart your ideas and determine the best course of action. Facility specifications are taken into account so that the ideal adventure attractions are chosen for your business.

Site plans are carefully analyzed by RCI designers to generate a rendered drawing and ensure that the RCI attractions will fit within the allotted space. Specifications like desired colors and customized features are chosen and the price is calculated.

Finalized renderings are sent to our engineers for review before production can begin. Time in this stage varies depending on the scale of the project and the amount of attention that is required.

What was once a vision starts to become reality as detailed plans are developed and specific assembly instructions are dictated by engineers. With those put in place, the attraction is then carefully fabricated and painted.

Time is spent guaranteeing that the attractions produced meet national, state and industry standards as well as regulations before they are officially shipped. Safety and utmost quality are top priorities here at RCI so this stage is very much necessary before anything can be shipped off to the client.

Product components are prepared for delivery and loaded so all can be shipped to the site location. Depending on whether the final destination is domestic or international, this phase can of course vary on the project.

At last the time has come to physically bring the once designed rendering to life. RCI's Installation crew travels to the site location and builds the attraction in a few weeks time. The larger the project, the more time needed to properly install.

Once installation has been completed, our Services team steps in and arrives on site to thoroughly inspect the attraction and ensure all aspects are operational. Next, training of the client's staff takes place and each individual becomes certified as operators.

The recently installed and inspected attraction is finally able to open to the general public. Daily, monthly and annual inspections are now fulfilled by the client and RCI's Aftermarket Sales department stays in contact for any product repairs, replacements or upgrades the client may require.

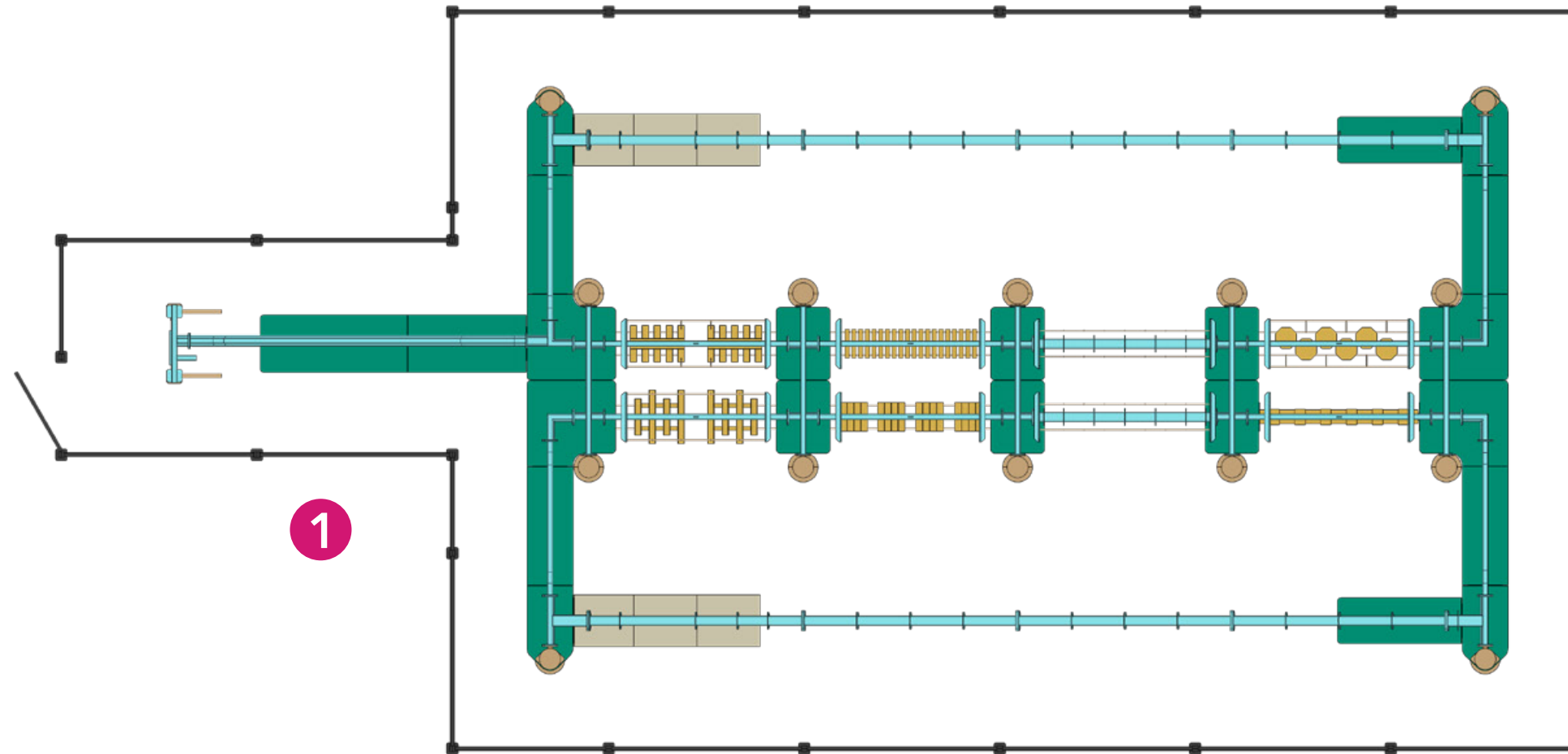


OUR PROPOSAL

NOTES:
CAD PLAN & SECTION NEEDED TO
CONFIRM DESIGN ACCURACY

LEGEND

1 Sky Tykes®



Notes:
Additional design work may be required
Final course design subject to change per engineering
Product pictured may contain custom components
Colors shown may vary from delivered product. Physical samples available upon request
Field verify all dimensions, heights and clearances prior to engineering

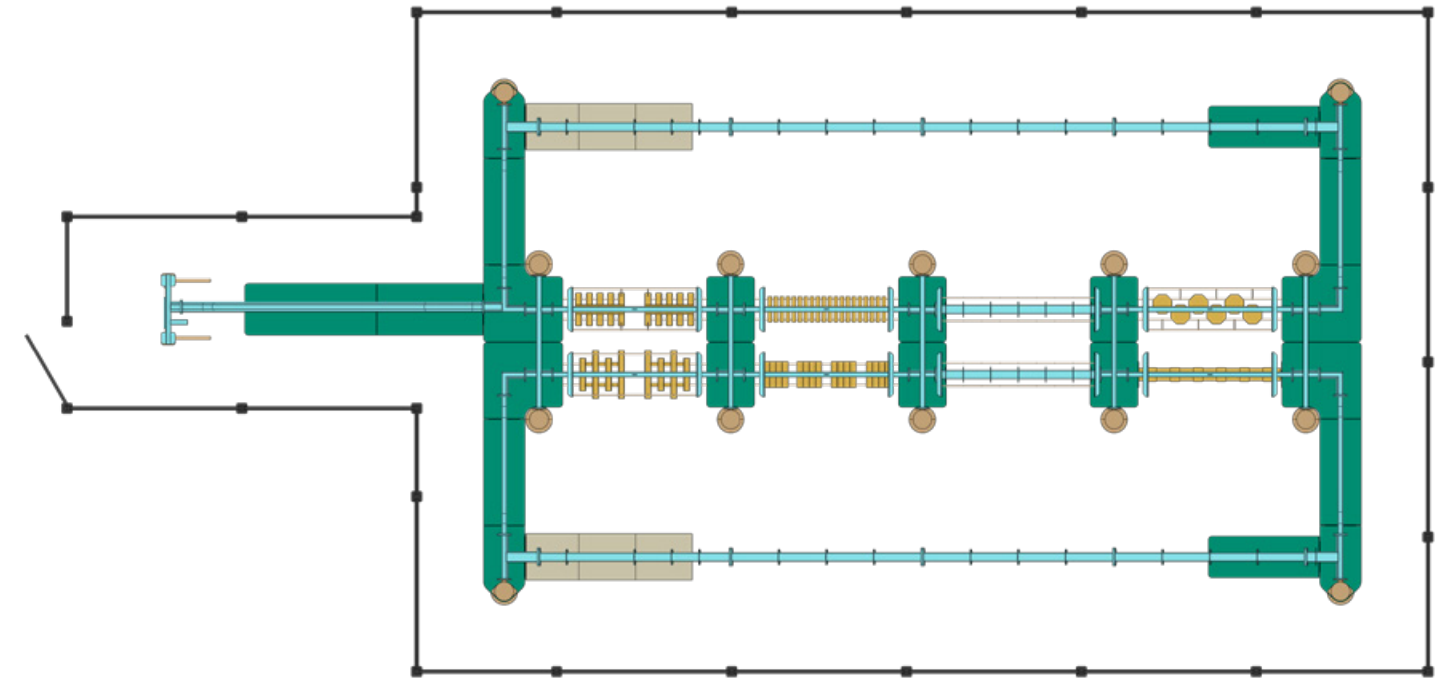
ST 10P (2) 40FT SR.skp

This drawing contains a confidential proprietary design that cannot be reproduced or divulged, in whole or in part, without written authorization from RCI Adventure Products. All design, manufacturing, reproduction, use, sale, or other rights regarding this design are expressly reserved. The information in this drawing may contain patents pending.

September 22, 2022



DIMENSIONS							
10 Pole Sky Tykes® with (2) Sky Rails®							
# of Elements	Capacity	Imperial (ft/in)			Metric (m)		
		Length	Width	Area	Length	Width	Area
8	15	66' 9"	32' 7"	2175 ft ²	20.35m	9.94m	203m ²
Distance Between Columns		9' 4"			2.85m		
Length of Sky Rails®		40' 0"			12.20m		
Platform Height		2' 8"			0.82m		
Top of Steel Height		9' 4"			2.85m		
Features		Sky Rail® Popular Elements: - Pass Throughs - Roller Rail					

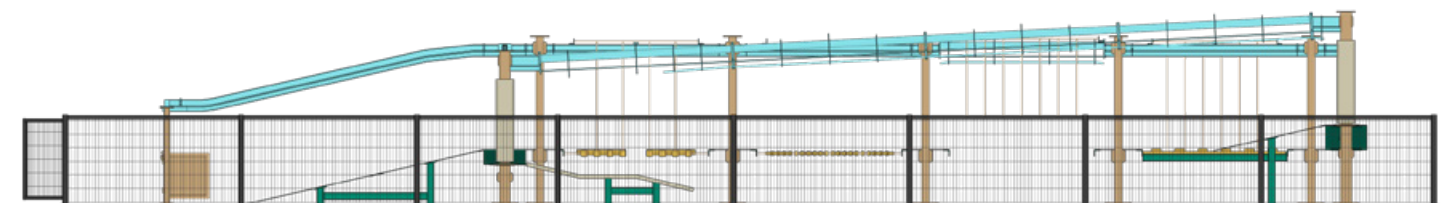


PLAN

Platforms: Aqua Waters	Horizontals: Aqua Whisper	Verticals: Mesa Tan	Plumber: Cedar	Slingline: Brown
			Rope: Tan	Pad: Tan

PRELIMINARY COLOR SCHEME

Notes:
 Additional design work may be required
 Final course design subject to change per engineering
 Product pictured may contain custom components
 Colors shown may vary from delivered product. Physical samples available upon request
 Field verify all dimensions, heights and clearances prior to engineering

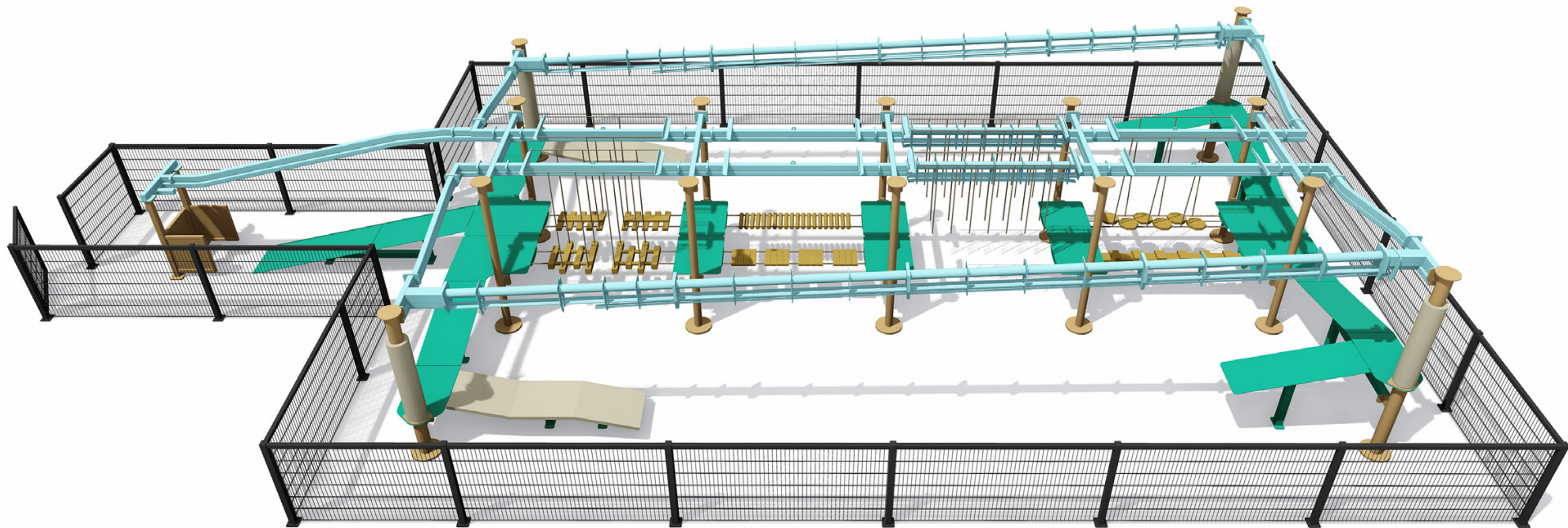


ELEVATION

ST 10P (2) 40FT SR.skp

This drawing contains a confidential proprietary design that cannot be reproduced or divulged, in whole or in part, without written authorization from RCI Adventure Products. All design, manufacturing, reproduction, use, sale, or other rights regarding this design are expressly reserved. The information in this drawing may contain patents pending.

September 22, 2022







1 Sky Tykes®

Catering to the pint-sized adventure seekers under 4' (1.2m) tall, Sky Tykes® utilizes the same specially engineered technology as Sky Trail® but shrinks elements to proportionally fit children. A safety track tailored to a smaller size keeps the little visitors feeling secure while still giving them a taste of independence. This attraction can stand alone, include a Sky Rail® or integrate as a Sky Trail® addition to introduce kids to an adventurous experience while at the same time allowing them to unleash their imagination.

Features & Benefits:

- **High profitability:** U.S. businesses typically charge \$5-7 per participant and participants stay on attraction for an average of 15-30 minutes
- **Secure & dependable:** Utilizes U.S. patented overhead tracking system and time-tested safety equipment
- **Low operator cost:** 1 operator recommended; 0 if paired with a Sky Trail®
- **Minimal maintenance:** Engineered with durable materials designed to withstand weather and high use
- **Unique entertainment:** Visually commanding and not common on most playgrounds.
- **Promotes exercise:** Offers a healthy and engaging activity for kids

A woman is climbing a rope structure on a ship's mast. She is wearing a harness and a helmet. The background is a warm, orange-red color. The text "KEY PROJECTS" is overlaid in white, bold, sans-serif font across the center of the image.

KEY PROJECTS



Hafan y Môr Holiday Park

Pwllheli, Gwynedd, North Wales

Attraction: 7 pole Sky Tykes® with Sky Rail®
Capacity: 15 participants at one time | Industry: Hotels & Resorts



Allegan Event Center

Allegan, Michigan, USA

Attraction: 16 pole, 2 level Sky Trail® with 2 Sky Rails®, Sky Tykes® and 17 Clip 'n Climbs
Capacity: 135 participants at one time | Industry: Family Entertainment Center

A young boy is climbing a rope structure, likely a zipline or ropes course. He is wearing a harness and is being assisted by an instructor who is also wearing a harness. The background shows other people on the structure, and the entire scene is overlaid with a warm, orange-red color. The text "Thank you for considering us." is centered in the middle of the image.

Thank you for considering us.



RCI Adventure Products
+1 877.203.0557
info@rciadventure.com
www.rciadventure.com