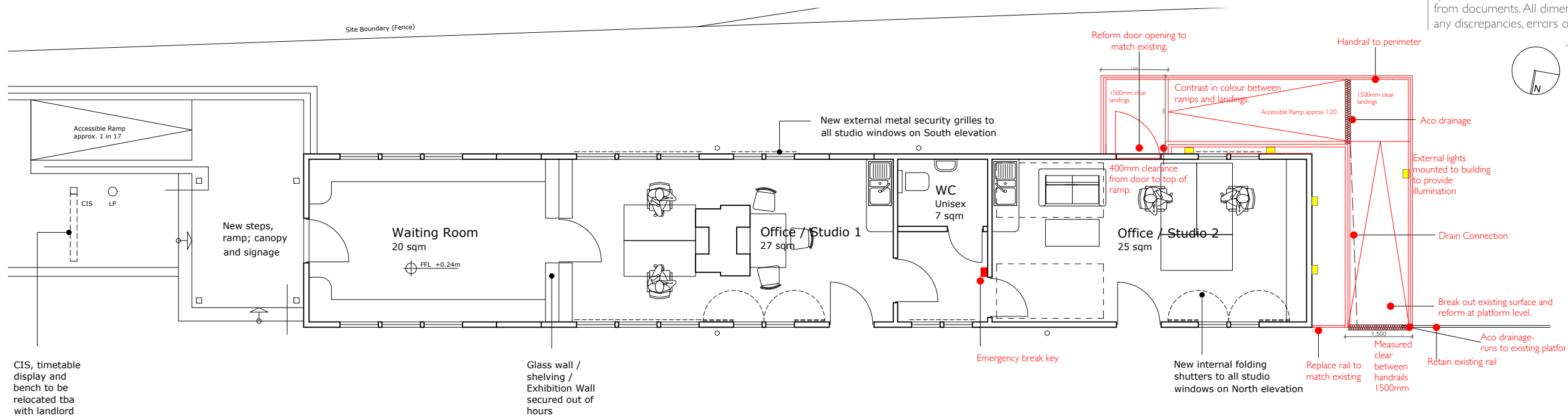


In addition to the hazard/risks normally associated with the types of work detailed on this drawing take note of the above. It is assumed that all works on this drawing will be carried out by a competent contractor working, where appropriate, to an appropriate method statement.

Safety Health and Environmental Information Box

Notes

This document and its design content is copyright ©. It shall be read in conjunction with all other associated project information including models, specifications, schedules and related consultants documents. Do not scale from documents. All dimensions to be checked on site. Immediately report any discrepancies, errors or omissions on this document to the Originator. If in



Plan

1:100



Existing Area

**Handrails to ramp and steps**

**Balustrade Stanchion:**

- RHS 60x60x4 at 1500 maximum centres
- Connection between RHS and spigot to be min - 50mm below top of concrete

**Top Rail:**

- HS 60x60x4 at 900 above ground level

**Handrails:**

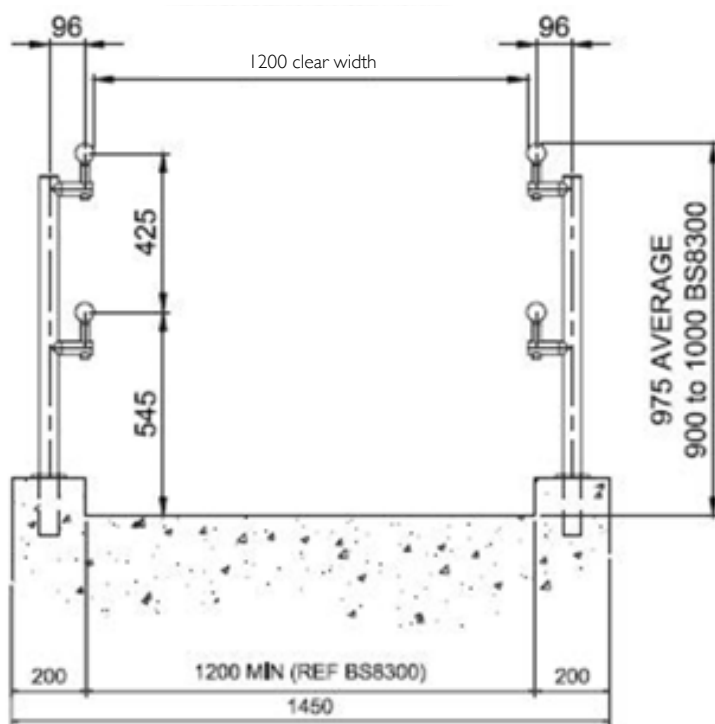
- at two levels
- 50 diameter stainless steel hollow section Warm to touch

**Proposed fixing:**

Spigot and ground sleeve connection into ground;

Note- there should be a colour contrast between the ramps and the landings.

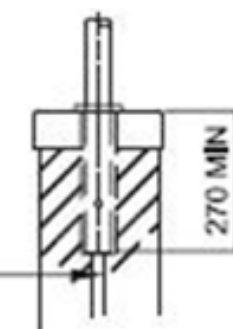
**Handrailing to ramp fixing**



Hand Rail Detail

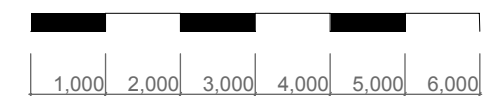
1:20

**VOID TO BE FILLED WITH STRUCTURAL CONCRETE**



Upstand Detail

1:20



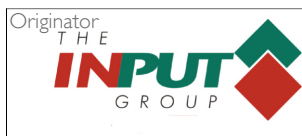
Scale Bar

1:100

APPROVED FOR CONSTRUCTION

PRINCIPLE CONTRACTOR	
SIGNED	TITLE
NAME	DATE
PRINCIPLE CONTRACTOR	
SIGNED	TITLE
NAME	DATE

Date	Description	Designed by	Drawn by	Checked by	Approved by	Revision
05.09.22	Additional Ramp		KM	CM	CM	/
07.09.22	Steps added, ramp removed.		KM	CM	CM	A
10.11.22	Ramp and notes amended.		KM	CM	CM	B



Project No. **2020- 1805**

Project **Haltwhistle**

Layout Title **Platform 2- Additional ramp**

Purpose of Issue **Approval**

Scales @ A3 **As Indicated**



Drawing Details						
Drawing Number	Date	Designed by	Drawn by	Checked by	Approved by	Revision
1085-02	10.11.22		KM	CM	CM	B