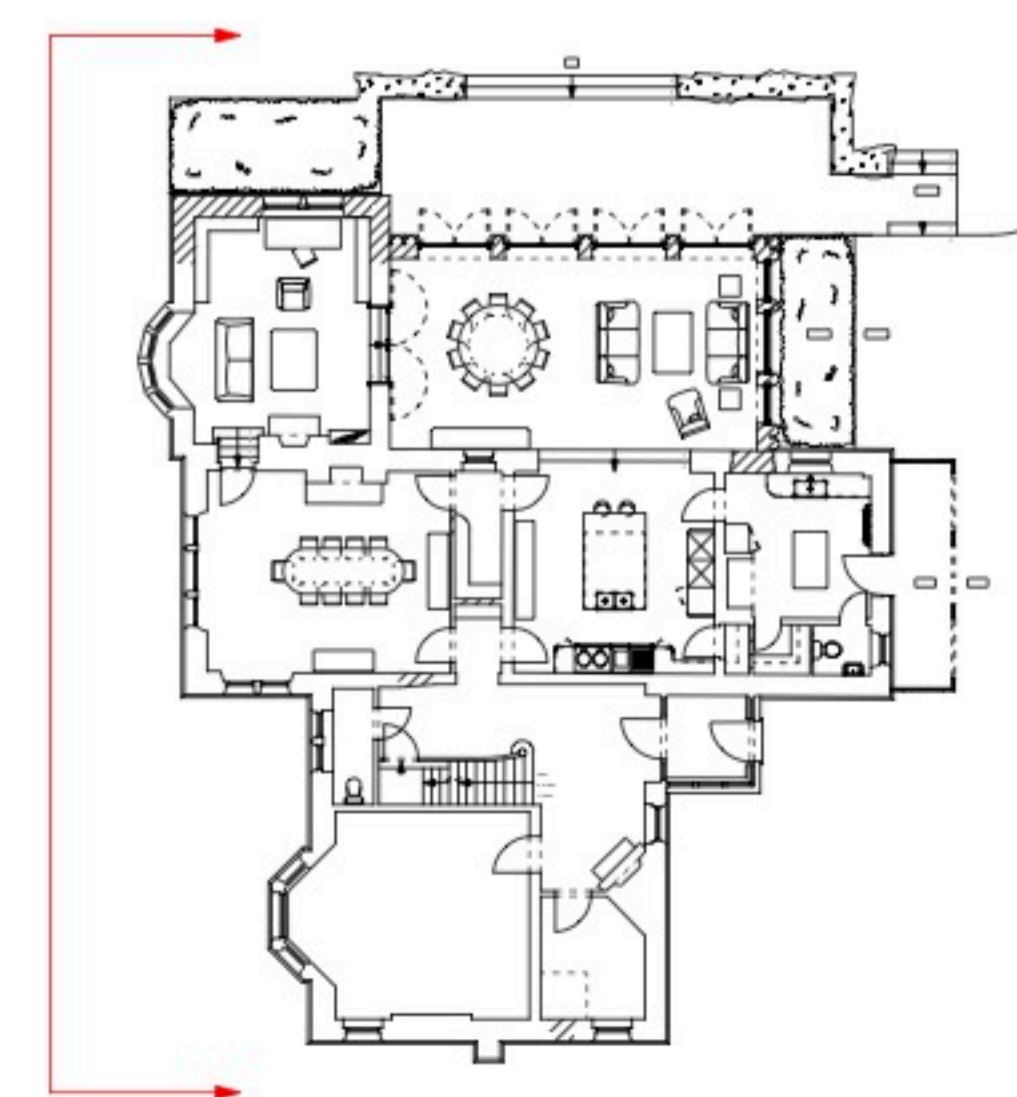


New dormers with painted timber facings and lead checks

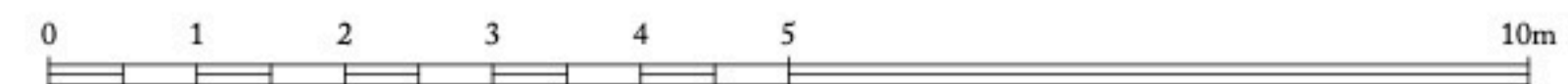


datum line
102.00m

datum line
102.00m



NOTE: All sash windows replaced with double glazed sashes using 14mm units from UA glass with glazing pattern as shown



Ben Pentreath		3 Lamp Office Court Lamb's Conduit Street London WC1N 3NF T +44 (0) 20 7430 2424 benpentreath.com	
PROJECT: BROKENHEUGH HALL			
TITLE: PROPOSED SOUTH EAST ELEVATION			
DRAWING NO: A-200.1	REV. NO: -		
SCALE: 1:50@A1 1:100@A3	DRAWN BY: AM		
DATE: APR 2020	CHECKED BY: RJC		
All dimensions to be checked on site. All designs © Ben Pentreath Ltd 2020. Not to be reproduced without permission			