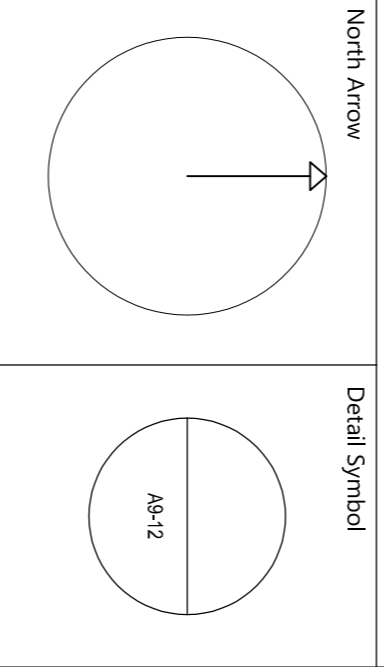


This drawing has been prepared solely for the use of:
 NORR Consultants Limited and there are no representations of any kind made by
 NORR Consultants Limited to any party with whom NORR
 Consultants Limited has not entered into a contract.
 This drawing must not be used, reproduced or revised
 without written permission.
 This drawing shall not be used for construction purposes
 until the "CONSTRUCTION" status appears under the
 Sheet Status.
 Contractors must only work to figured dimensions which
 are stated on site. Do not scale from hard copy
 drawings.

Keyplan



Consultants

NORR
 NORR Consultants Limited.
 An Ingenium International Company
 Percy House, 8th Floor Percy Street
 Newcastle NE1 4PY
 England, UK
 norr.com

| | | | |
|---------|------------|------|------------|
| Drawn | sm | Date | 16.02.2023 |
| Checked | | Date | |
| Scale | 1:200 @ A1 | | |

Client
 Alexander and Annabel Dickinson

Project
 Styford Hall
 Air Source Heat Pump Installation

Drawing Title
 Proposed Site Plan

Sheet Status
 Planning approval

Project No.
 IAN23-0020

Drawing No. 23-0020-A9-12
 Rev. A

