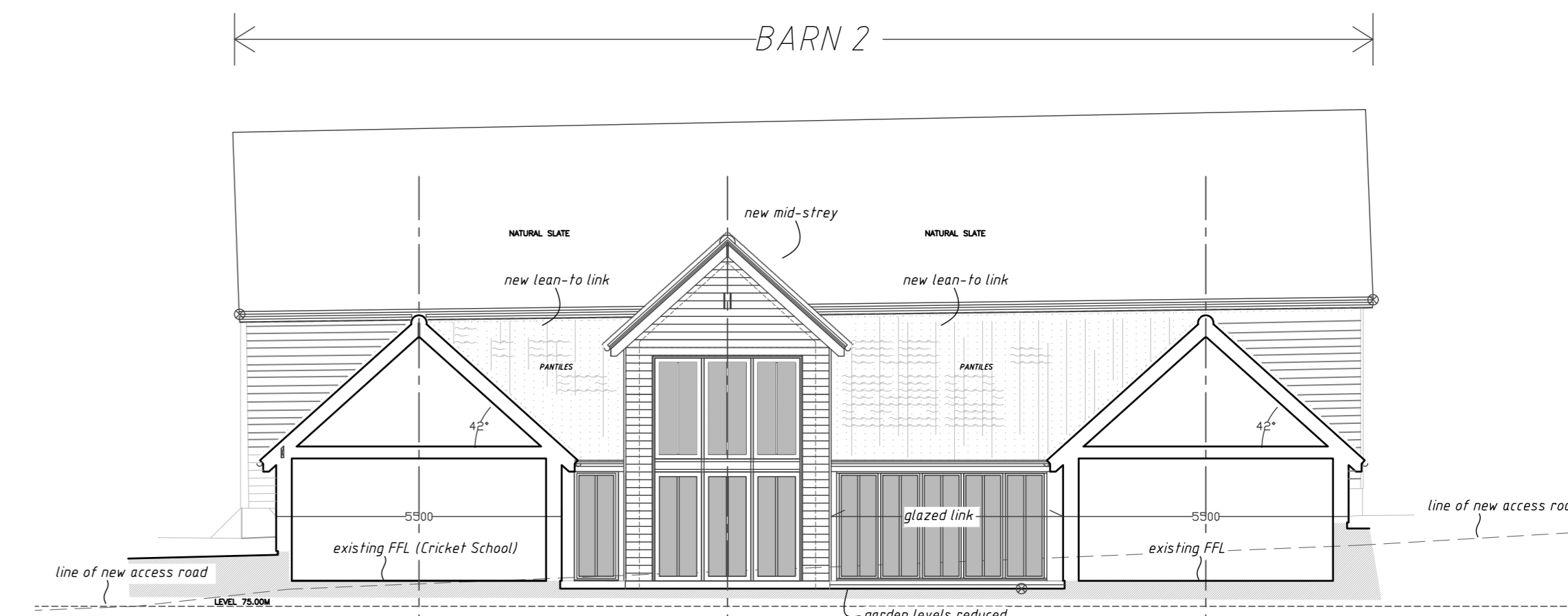
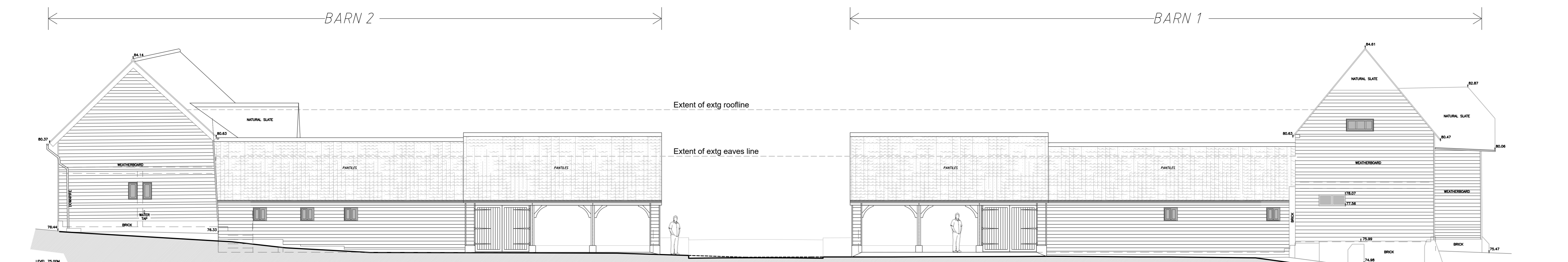


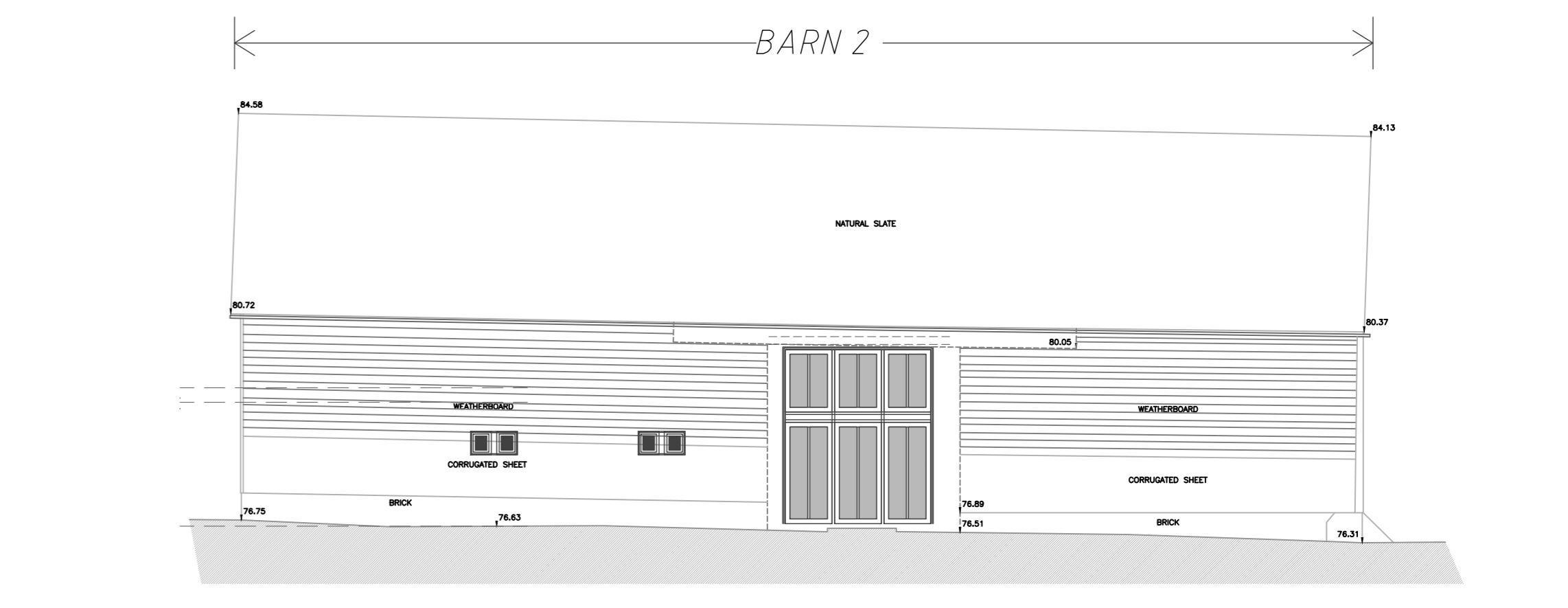
EAST ELEVATION (YARD)



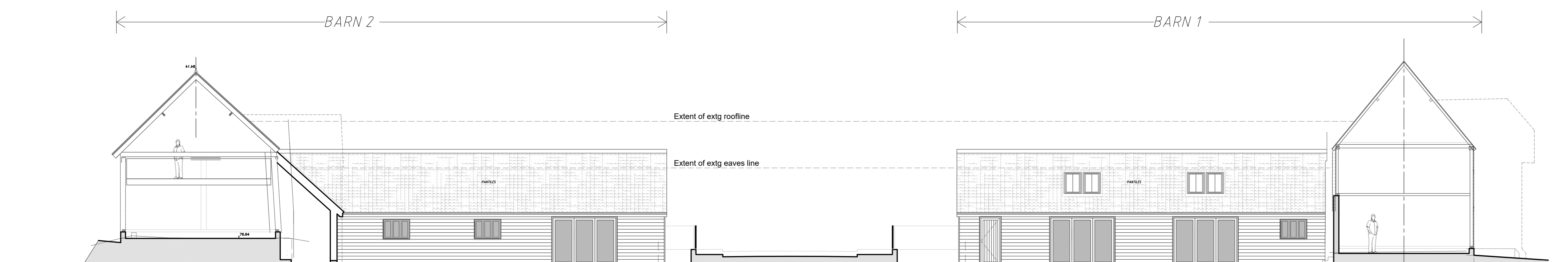
SOUTH ELEVATION - INTERNAL COURTYARD (BARN 2)



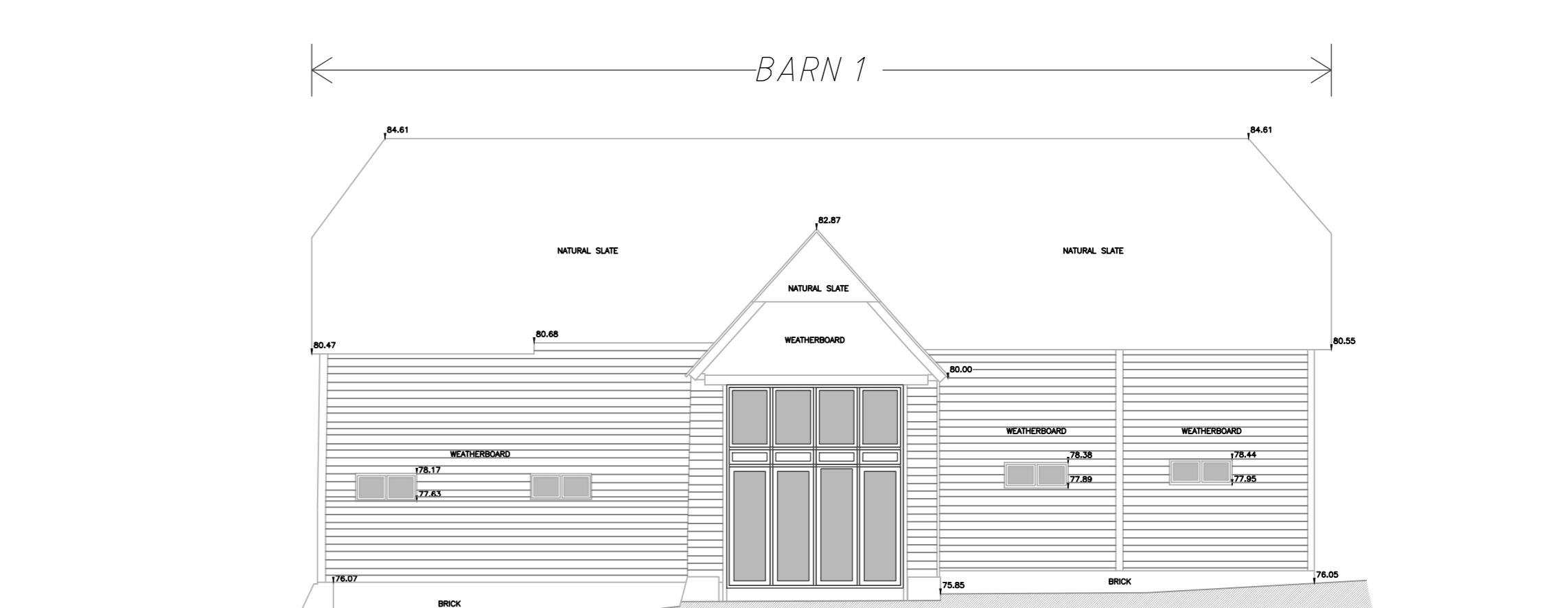
WEST ELEVATION (NEW ACCESS)



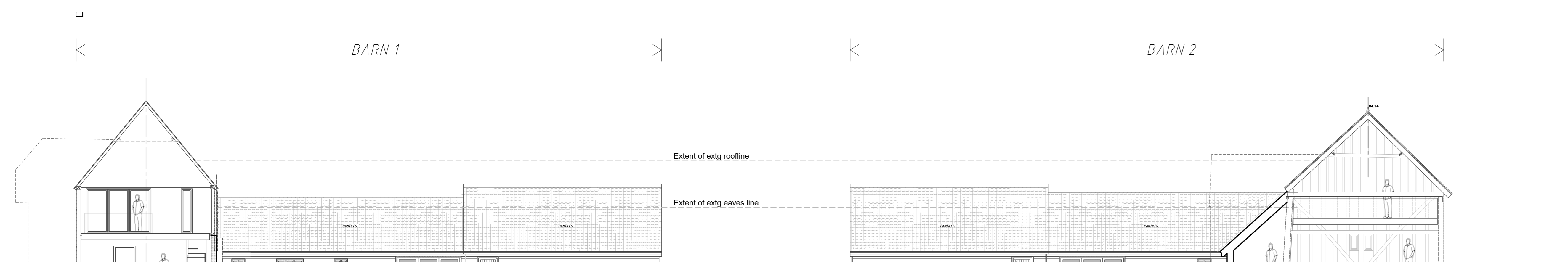
NORTH ELEVATION - (BARN 2)



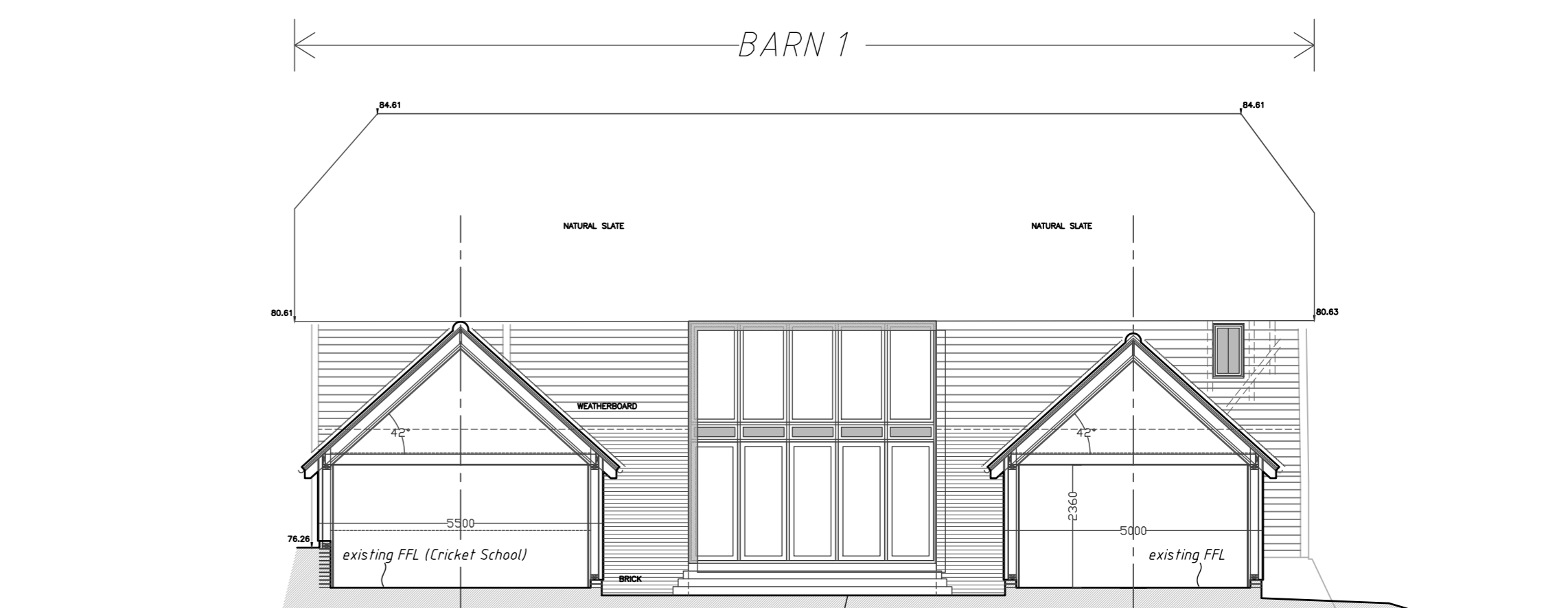
WEST ELEVATION - INTERNAL COURTYARD/GARDEN



SOUTH ELEVATION - (BARN 1)

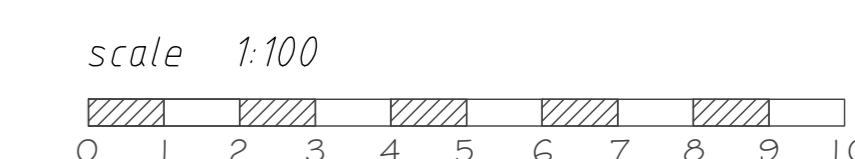


EAST ELEVATION - INTERNAL COURTYARD/GARDEN



NORTH ELEVATION - INTERNAL COURTYARD (BARN 1)

PROPOSED ELEVATIONS 1:100



RevE: 31.01.23 - cartshed revised
 RevD: 30.01.23 - general revisions
 RevC: 23.01.23 - minor revisions
 RevB: 16.01.23 - materials/windows revised
 RevA: December '22 - windows revised

Threebies Barns
 Roak End, High Wycombe
 Herts. MK21 0LL

Proposed Elevations
 SCALE 1:100 @ A1 DWG No. 1907_14E

DONALD PURRISS
 ARCHITECTS

14 KING STREET
 HAMPDEN PALACE, HIGH WYCOMBE
 TEL: 01799 528001 & 527760
 EMAIL: DONALD@DONALDPURRISS.CO.UK

Copyright - Donald Purriss and Associates