

Stone Cladding | General Specification

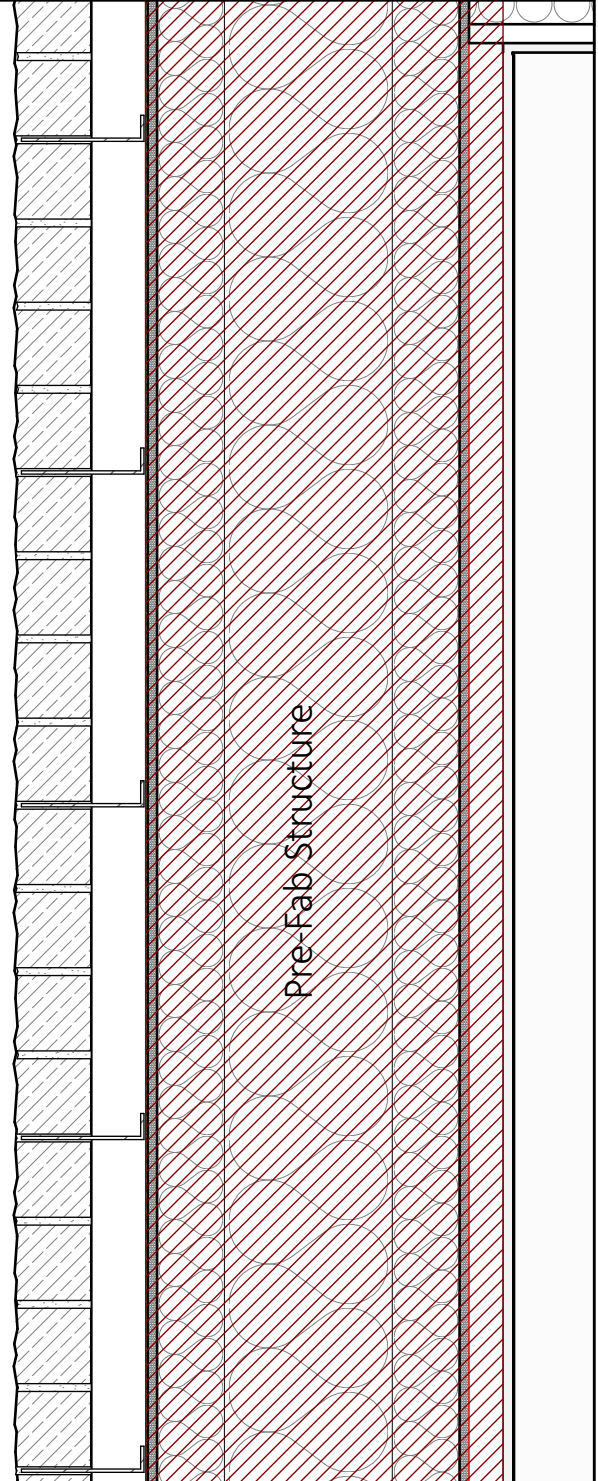
This specification must be read in conjunction with the detail drawings highlighted in the adjacent issue schedule, as well as the General Arrangement Drawings



Stone Cladding Details

AT.500	Stone Cladding: General Specifica...	A
AT.501	Stone Cladding: Plot 2 Key Drawing	A
AT.502	Stone Cladding: Plot 3 - Key Draw...	A
AT.503	Stone Cladding: Typical Ground J...	A
AT.504	Stone Cladding: Typical Parapet D...	A
AT.505	Stone Cladding: Typical Window ...	A

- Natural Sandstone Facing Stone
 - Supplier: Hutton Stone- To client specification
 - Split faced, sawn back & sides
 - Bed depth: 100mm
 - Course height: 65mm
 - Length: Random, between 200-500mm
 - Coursing: Stretcher bond, perp joints always staggered
 - Setting out: On bed at FFL, as per GA Elevations
 - Corners & Ends: All faces to have split face to match
 - Compressive Strength: To SE Requirements
 - Frost Resistance: Required
 - Quality: Seasoned and free from vents, cracks, fissures or other defects deleterious to strength, durability or appearance.
 - Storage: Keep dry, secure and away from contaminants
 - Adverse weather: Do not lay frozen, or on frozen materials.
 - Do not lay at temperatures below 5°
- Natural Hydraulic Lime Mortar- Site Mixed
 - 1:2.5 Mix
 - 1 part NHL2 Lime
 - Supplier: Secil / Ty Mawr (or Similar Approved)
 - 2.5 part sand
 - Washed sharp sand, mixed with Hutton Stone rock sand to provide desired texture/colouration
 - Water quantity: Only sufficient to produce a workable mix
 - Bed thickness: 10mm
 - Flush finish, beaten hard with churn brush to expose agregates and comporess mortar
 - Sample panel built on site to test mix to clients approval, 2 weeks prior to final installation
 - Working & curing temperatures: Above 5°
 - Treatment: Hessian covering during curing for min 2 weeks
 - Working time: Within limits recommended by the hydraulic lime manufacturer
 - Mixing: Mix materials thoroughly to uniform consistency, free from lumps
 - Mixing: Follow the lime manufacturer's recommendations.
 - Batching: By volume. Use clean and accurate gauge boxes or buckets.
 - Contamination: Prevent intermixing with other materials, including cement.
- 75mm Drained & Ventilated Cavity
 - Ancon Staifix timber frame cavity ties
 - Max 900mm horizontal centers and 450mm vertical centers
 - Cavity to maintained clear and free of snots or other obstructions.



CROFT
design collective

info@croftdesigncollective.co.uk

01144 895026

Notes:

- Do not scale from this drawing, work to figured dimensions only
- All information is to be checked on site for accuracy
- Report any discrepancies or omissions to Croft Design Collective
- Unless noted, changes made to the design intent on site have not been incorporated into this drawing
- Unless noted, information on this drawing is intended as 'design intent' and not to be used for Construction

Project Number:			
1912WRK			
Rev	Description	Date	By
A	First Issued	01/03/2023	JK

Drawing Title	
Stone Cladding: General Specification	
Drawing Status	Technical Design
Drawn By	Checked By
JK	-
Scale (@A4)	Date
1:10	Jan 2023
Drawing no.	Rev
AT.500	A