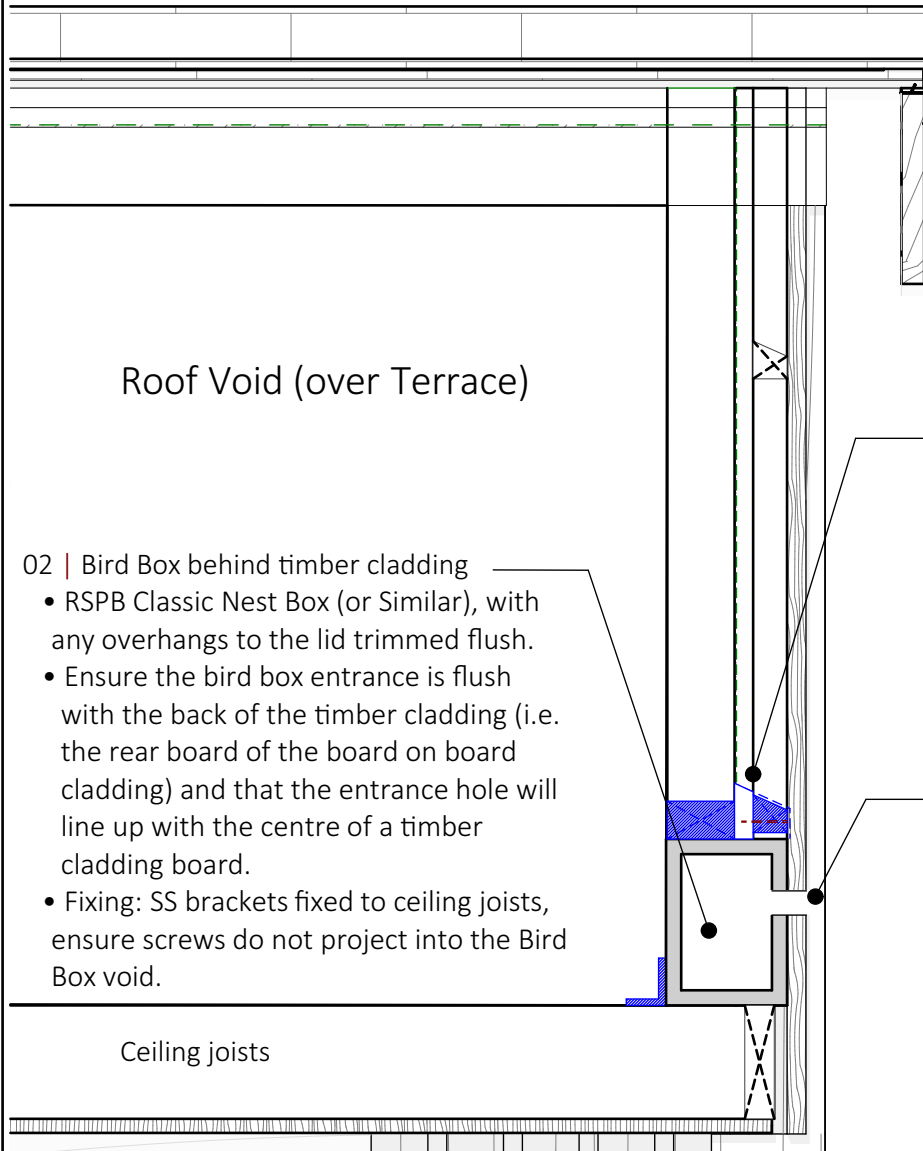


Bird Box located in Attic Void above terrace

Plot 2 South East View |



Roof Void (over Terrace)

- 02 | Bird Box behind timber cladding
- RSPB Classic Nest Box (or Similar), with any overhangs to the lid trimmed flush.
 - Ensure the bird box entrance is flush with the back of the timber cladding (i.e. the rear board of the board on board cladding) and that the entrance hole will line up with the centre of a timber cladding board.
 - Fixing: SS brackets fixed to ceiling joists, ensure screws do not project into the Bird Box void.

Ceiling joists

- 01 | Trim studwork and cladding battens
- Trim studwork to allow for space to install Bird Box over ceiling joists
 - Trim vertical cladding batten above opening for Bird Box
 - Install horizontal cladding batten (and timber packer) above bird box, ensuring membrane laps over as shown.
- 03 | Entrance hole in timber cladding
- Drill Ø32mm hole to align precisely with bird box entrance hole (also 32mm)
 - Ensure hole is located centrally on a timber cladding board.

Bird Box Detail Section | 1:10

CROFT
design collective

✉: info@croftdesigncollective.co.uk

☎: 01144 895026

Notes:

- Do not scale from this drawing, work to figured dimensions only
- All information is to be checked on site for accuracy
- Report any discrepancies or omissions to Croft Design Collective
- Unless noted, changes made to the design intent on site have not been incorporated into this drawing
- Unless noted, information on this drawing is intended as 'design intent' and not to be used for Construction

Project Number:

1912WRK

Rev	Description	Date	By
A	Issued for Planning	03/03/2023	

Drawing Title

Timber Cladding: Bird Box Details

Drawing Status

Planning

Drawn By

EW

Checked By

JK

Scale (@A4)

1:10

Date

Mar 2023

Drawing no.

AT.521

Rev

A