

Timber Cladding | General Specification

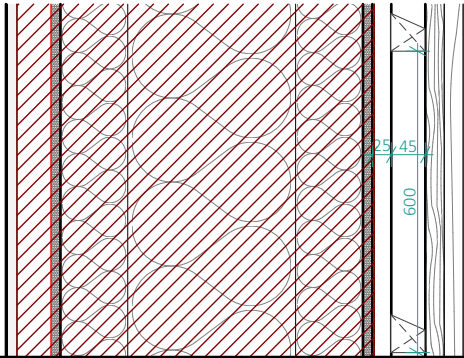
This specification must be read in conjunction with the detail drawings highlighted in the adjacent issue schedule, as well as the General Arrangement Drawings

Timber Cladding Details

AT.510	Timber Cladding: General Specification	A
AT.511	Timber Cladding: Plot 2 Key	A
AT.512	Timber Cladding: Plot 3 Key	A
AT.513	Timber Cladding: Typical Corner Junction Details	A
AT.514	Timber Cladding: Typical Ground Junction Detail	A

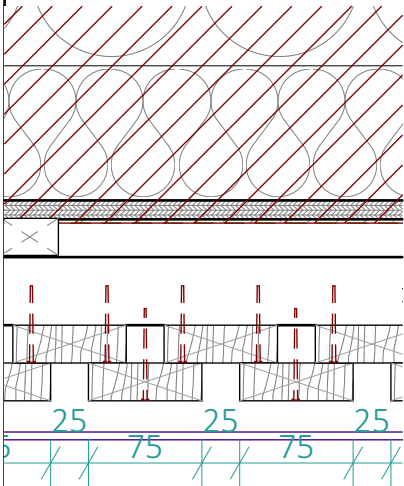
AT.515	Timber Cladding: Undercroft 'Eaves' Junction	A
AT.517	Timber Cladding: Typical Window Sill & Head	A
AT.518	Timber Cladding: Typical Window Jamb Details	A
AT.520	Timber Cladding: Outward Opening Door Details	A

Vertical Timber Cladding | 1:10

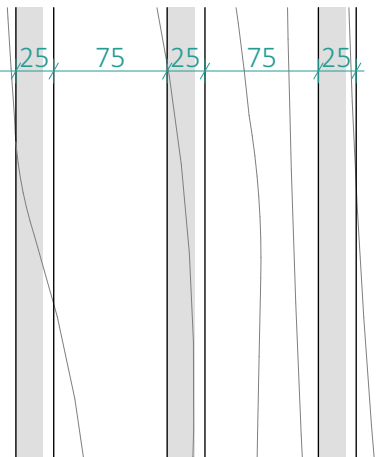


- 45 x 45mm Treated Timber Horizontal Cladding Batten
 - Installed at max 600mm c's
 - Top surface of batten angled to enhance durability
 - FSC, Graded to BS5534:2014
 - Pressure Treated to BS8417
 - Fixing: SS Screw Fixings
- 25 x 38mm Treated Timber Cladding Batten
 - Installed at max 600mm vertical c's or to match tile gauge
 - FSC, Graded to BS5534:2014
 - Pressure Treated to BS8417
 - Fixing: SS Screw Fixings

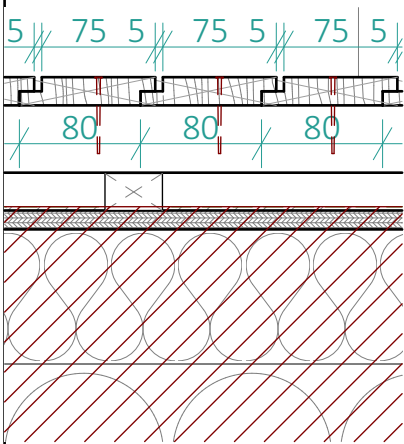
Type 1 | Board on Board | 1:5



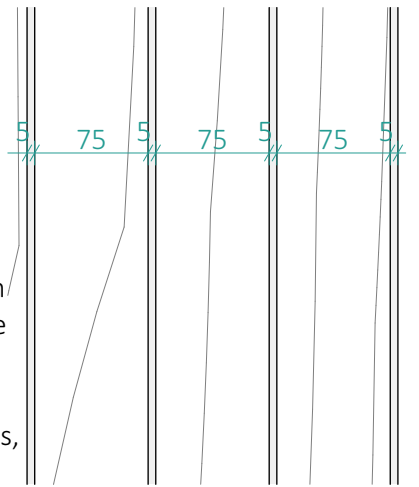
- Homegrown FSC sawn larch board on board cladding:
- Supplier: Abbey Timber (Or similar approved)
 - Specification: British grown profiled larch, finger jointed where the length exceeds standard sizes
 - Standards: FSC Certified. BS 1186-3
 - Fixing: Fixing: 50mm stainless steel ring shank nail, arrangement as shown.
 - Installation: Moisture content 16% ±4% upon fixing. Top & bottom ends chamfered to enhance durability. Max length timber to reduce jointing.
 - Finish: SiOO:X Original
 - Application: To manufacturers recommendations, prior to installation.



Type 2 | Rebated Lap | 1:5



- Homegrown FSC profiled half-lap larch cladding
- Supplier: Abbey Timber (Or similar approved)
 - Specification: British grown sawn larch, finger jointed where the length exceeds standard sizes
 - Standards: FSC Certified. BS 1186-3
 - Fixing: 50mm stainless steel ring shank nail, 25mm in from outer lap edge.
 - Installation: Moisture content to be 16% ±4% upon fixing. Top and bottom ends chamfered to enhance durability. Max length timber to reduce jointing.
 - Finish: SiOO:X Original
 - Application: To manufacturers recommendations, prior to installation.



CROFT
design collective

info@croftdesigncollective.co.uk

01144 895026

Notes:

- Do not scale from this drawing, work to figured dimensions only
- All information is to be checked on site for accuracy
- Report any discrepancies or omissions to Croft Design Collective
- Unless noted, changes made to the design intent on site have not been incorporated into this drawing
- Unless noted, information on this drawing is intended as 'design intent' and not to be used for Construction

Project Number: 1912WRK			
Rev	Description	Date	By
A	First Issued	01/03/2023	JK

Drawing Title Timber Cladding: General Specification	
Drawing Status Technical Design	Checked By JK EW
Scale (@A4) 1:5, 1:10	Date Jan 2023
Drawing no. AT.510	Rev A