

I

DATE: 1860 -1960  
MATERIAL: STONE AND PLASTERBOARD  
HISTORIC FEATURES / SIGNIFICANCE: ARCHED OPENING FORMED IN STONE ABUTS PLASTERBOARDED WALL WHICH CARRIES A NEW STEEL/CONCRETE BEAM. DATE OF ARCH UNKNOWN BUT LOCATION AND COURSING APPEAR TO BE LATER THAN ORIGINAL

O

DATE: 1771 -1860  
MATERIAL: WALL STRUCTURE CONCEALED BEHIND PLASTERED FINISH - ASSUME STONE WALL CONSTRUCTION WITH STONE ARCH ABOVE BLOCKED OPENING  
HISTORIC FEATURES / SIGNIFICANCE: EVIDENCE OF ARCHED OPENING - BLOCKED UP AT AN UNKNOWN DATE

A

DATE: 1771 -1860  
MATERIAL: WALL STRUCTURE CONCEALED BEHIND PLASTERED FINISH - ASSUME STONE WALL CONSTRUCTION WITH STONE ARCH ABOVE BLOCKED OPENING  
HISTORIC FEATURES / SIGNIFICANCE: EVIDENCE OF ARCHED OPENING - BLOCKED UP AT AN UNKNOWN DATE

A2

DATE: 1771 -1860  
MATERIAL: WALL STRUCTURE CONCEALED BEHIND PLASTERED FINISH - ASSUME STONE WALL CONSTRUCTION  
HISTORIC FEATURES / SIGNIFICANCE: NONE VISIBLE. THIS SECTION OF WALL WAS LIKELY TO HAVE ORIGINALLY BEEN AN EXTERNAL [COURTYARD] WALL

J

DATE: 1860 -1960  
MATERIAL: PLASTER ON STONE WALL  
HISTORIC FEATURES / SIGNIFICANCE: EXISTING ARCHED OPENING IN [ASSUMED] STONE WALL.

B

DATE: 1771 -1860  
MATERIAL: WALL STRUCTURE CONCEALED BEHIND PLASTERED FINISH - ASSUME STONE WALL CONSTRUCTION  
HISTORIC FEATURES / SIGNIFICANCE: NONE VISIBLE.

K

DATE: 1860 -1960  
MATERIAL: PLASTER ON ASSUMED STONE WALL  
HISTORIC FEATURES / SIGNIFICANCE: EXISTING ARCHED OPENING IN [ASSUMED] STONE WALL.

O

DATE: 1961 - 2020  
MATERIAL: CONCRETE STAIR WITH STEEL RAILINGS  
HISTORIC FEATURES / SIGNIFICANCE: NONE

H

DATE: 1771 -1860  
MATERIAL: WALL STRUCTURE CONCEALED BEHIND PLASTERED FINISH - ASSUMED STONE WALL  
HISTORIC FEATURES / SIGNIFICANCE: NONE VISIBLE. ASSUMED ORIGINAL OPENING WAS FORMED WITH STONE ARCH - THIS SECTION OF WALL HAS A MODERN STRUCTURAL INTERVENTION [STEEL BEAM ASSUMED] RESTING ON THE EXISTING WALL / PIER

G

DATE: 1771 -1860  
MATERIAL: EXISTING OPENING IN STONE WALL WITH STONE LINTEL - BLOCKED UP WITH MODERN BRICKS  
HISTORIC FEATURES / SIGNIFICANCE: STONE LINTEL APPEARS TO BE MORE RECENT THAN THE OPENING. BRICK INFILL TO BE REMOVED WITH OPENING RETAINED

F

DATE: 1771 -1860  
MATERIAL: EXISTING OPENING IN STONE WALL WITH TIMBER LINTEL  
HISTORIC FEATURES / SIGNIFICANCE: TIMBER LINTEL APPEARS MORE RECENT THAN THE OPENING. THIS SECTION OF WALL WAS LIKELY TO HAVE ORIGINALLY BEEN AN EXTERNAL [COURTYARD] WALL

E

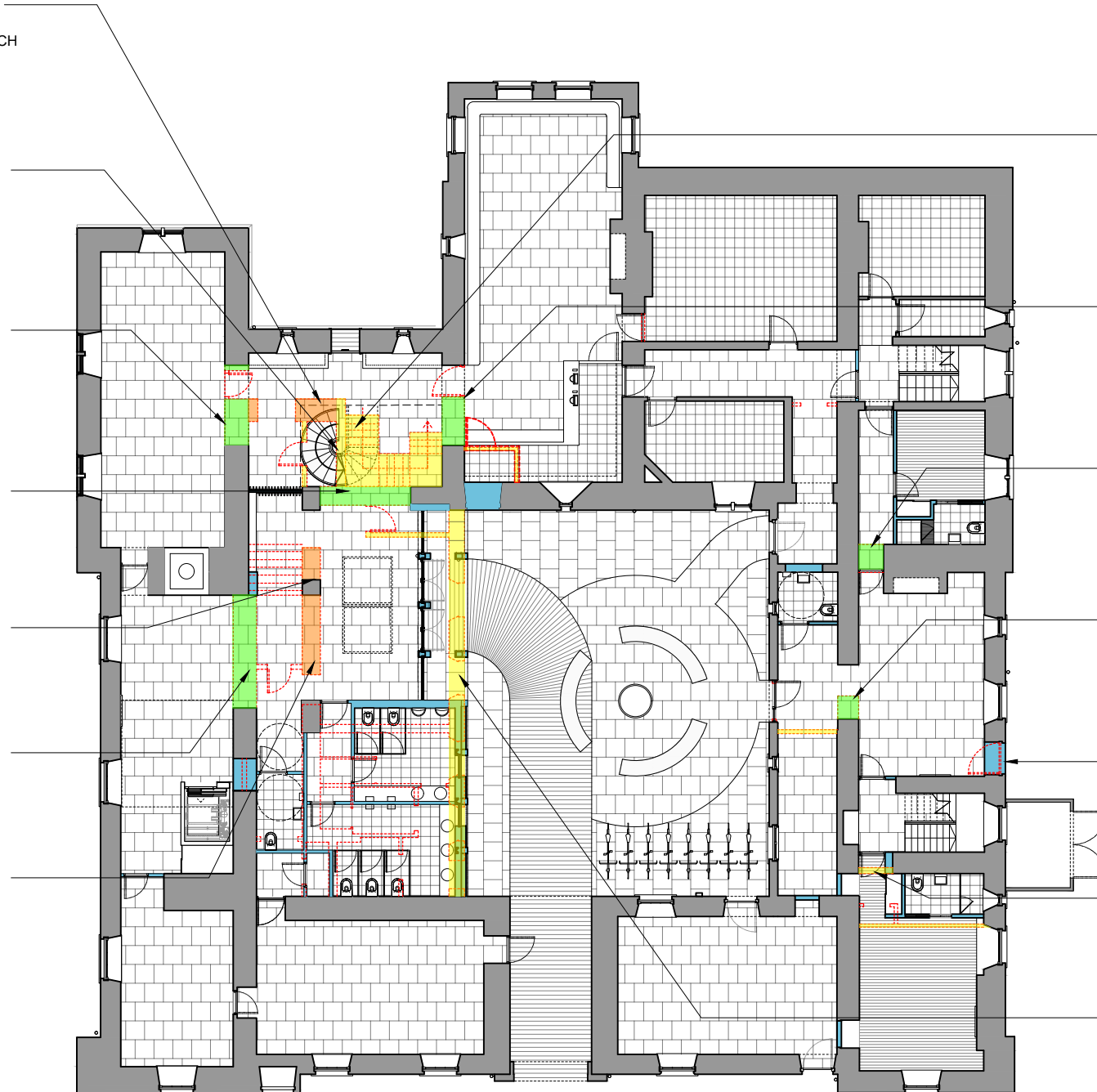
DATE: 1961 - 2020  
MATERIAL: TIMBER DOOR WITH CONCRETE LINTEL INSTALLED WITHIN STONE WALL  
HISTORIC FEATURES / SIGNIFICANCE: MODERN CONSTRUCTION TO BE INFILLED WITH STONE

D

DATE: 1961 - 2020  
MATERIAL: MODERN BRICK INFILLING OF DOOR OPENING WITH TIMBER LINTEL WITHIN STONE WALL  
HISTORIC FEATURES / SIGNIFICANCE: TIMBER LINTEL TO BE RETAINED

N

DATE: 1961 - 2020  
MATERIAL: STONE EXTERNAL WALL WITH TIMBER WINDOWS AND DOORS  
HISTORIC FEATURES / SIGNIFICANCE: NONE. STONE CILLS AND MULLIONS



MAILEN DESIGN

www.mailendesign.com info@mailendesign.com

Do not scale from drawing.

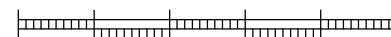
The author of this drawing takes no responsibility for any dimensions obtained by measuring or scaling from this drawing and no reliance may be placed on such dimensions. If no dimension is given it is the responsibility of the recipient to ascertain the dimension specifically from the author or by site measurement.

The sizing of all structural and service elements must always be checked against the relevant engineer's drawings. No reliance should be placed upon sizing information shown on this drawing.

All areas are approximate and measured off preliminary drawings. They relate to the likely area of the building at the current state of the design and using the stated option either in accordance to client standards or the RICS Code of Measuring Practice, 6th Edition, RICS/ISVA. Any decisions to be made on the basis of these predictions, whether as to project viability, pre-letting, lease agreements or the like should include due allowances for the increases and decreases inherent in the design development and building process.

Report all drawing errors, omissions and discrepancies to the architect.

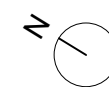
0 2m 10m



SCALE 1:200

- DEMOLITION
- NEW CONSTRUCTION
- 1771 -1860
- 1860 - 1960
- 1961 - 2020

FOR PLANNING



REV	DATE	NOTES
1	14.01.20	ISSUED TO LOCAL AUTHORITY FOR LBC
2	24.11.22	ISSUED FOR PLANNING
3	06.12.22	UPDATED FOR PLANNING
4	03.01.23	UPDATED WC LAYOUT
5	03.03.23	UPDATED FOR PLANNING
6	06.03.23	UPDATED FOR PLANNING

INT TM HL BJ BJ AC AC	PROJECT TITLE KIELDER CASTLE KIELDER, NORTHUMBERLAND	
	DRAWING TITLE HERITAGE SCHEDULE GROUND FLOOR PLAN	DRAWN TM CHECKED BM
	DRAWING NO. 1100	SCALE 1:200 @ A3 REVISION 6