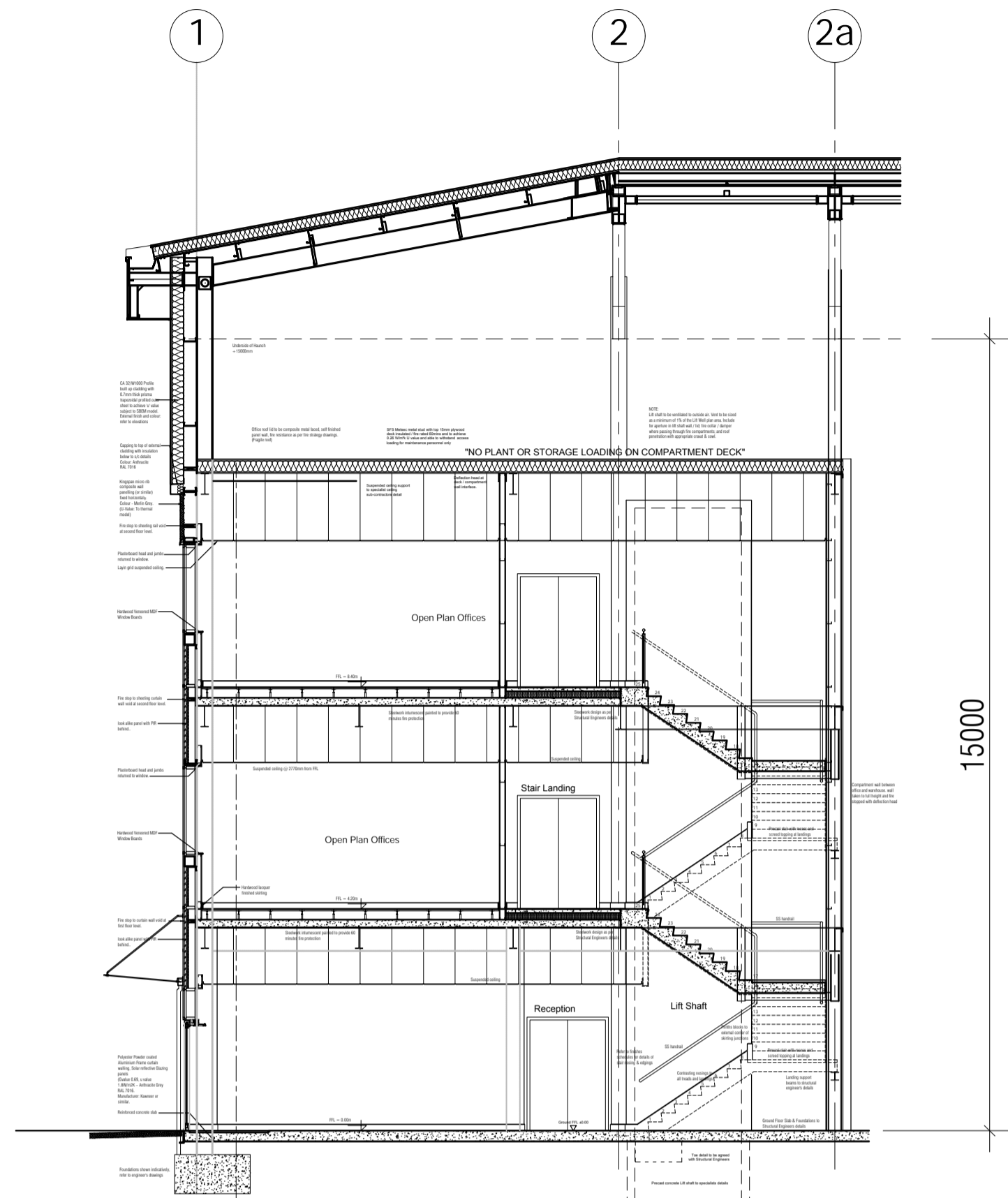
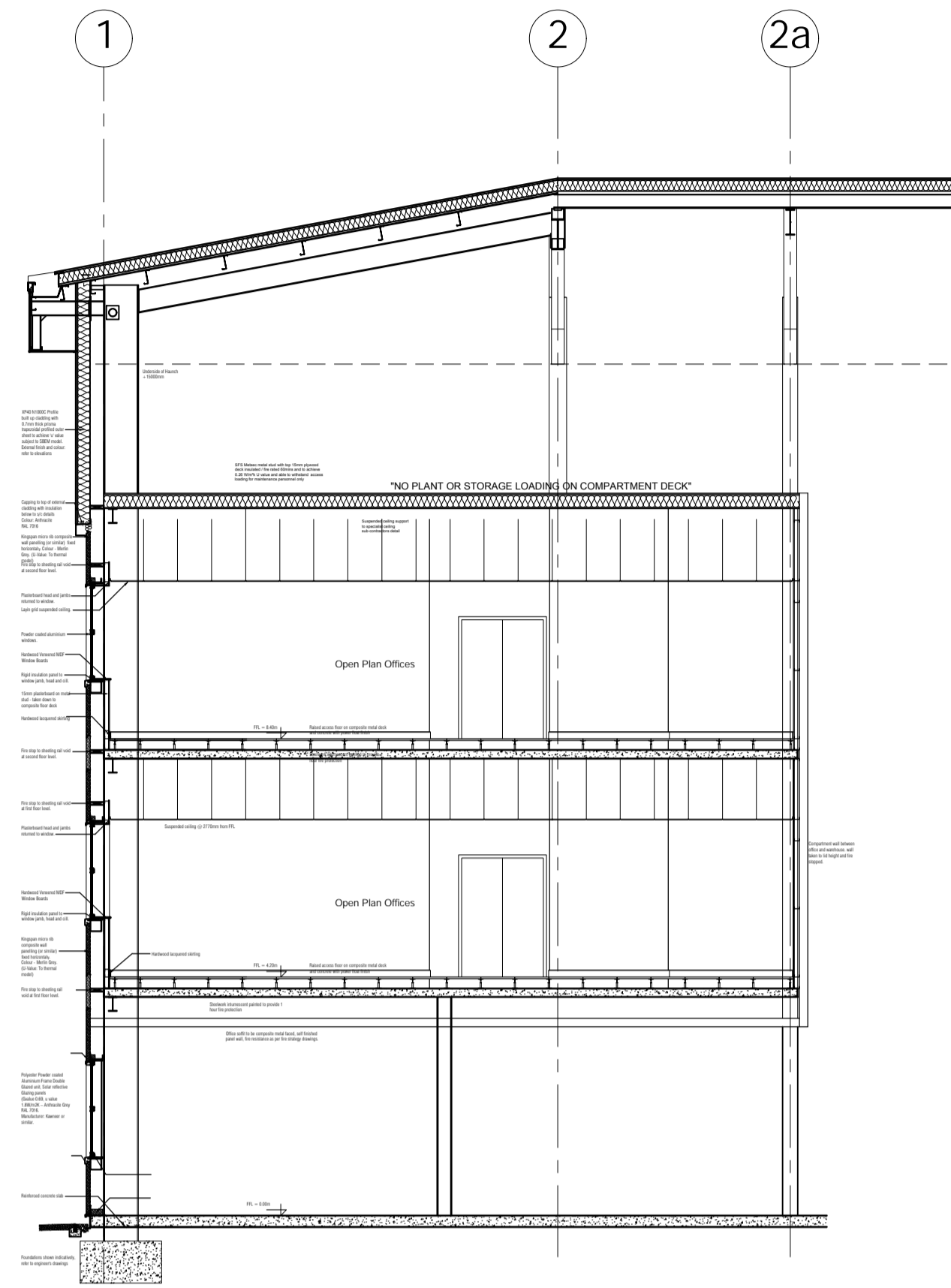


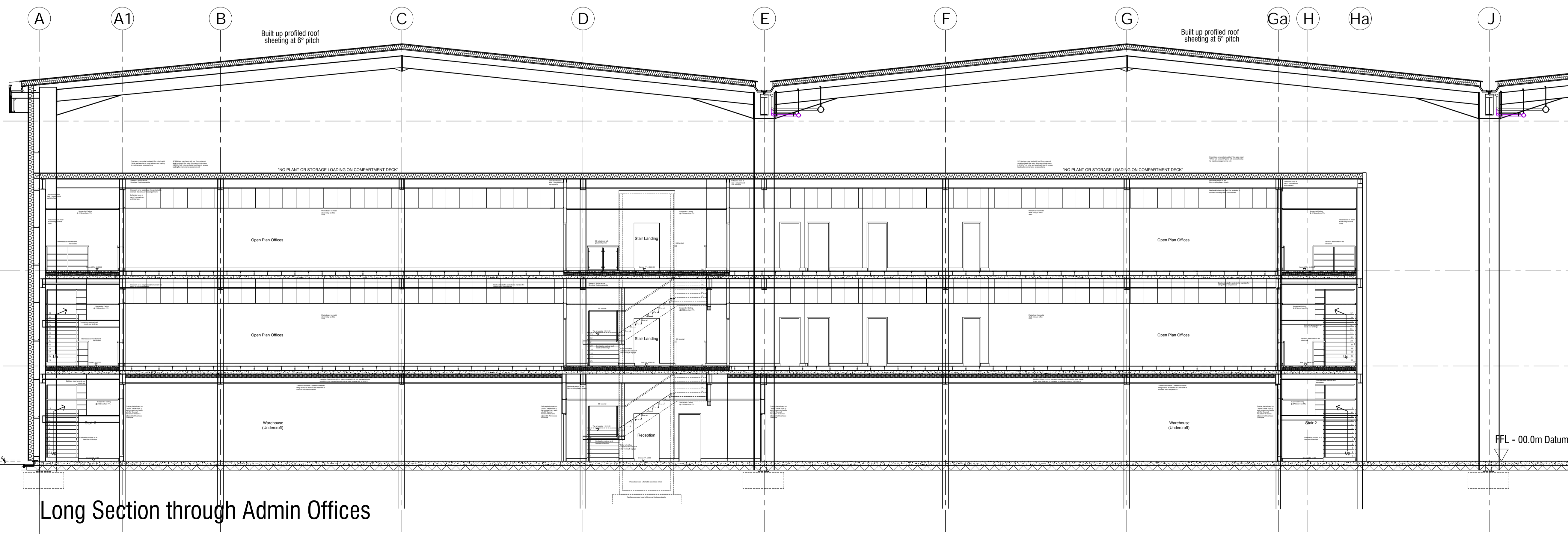
notes  
 This drawing and design is the copyright of aja architects llp and must not be reproduced in part or in whole without prior written consent. Contractors must verify all dimensions on site before commencing work or preparing shop drawings. If in doubt ASK.  
 Where this drawing contains any Ordnance Survey mapping material, it has been reproduced under license number 100052278.  
 Ordnance Survey © Crown copyright



Cross Section @ Reception Area



Cross Section through Admin Offices



Long Section through Admin Offices

C	08/12/2022	Updated to suit construction drawing.	rp
B	22/04/2022	Updated to indicate "Canopy" & notes.	CdeM
A	07/04/2022	Updated to "PLANNING" status.	CdeM
no.	date	revision	by



aja architects llp  
 1170 Elliott Court  
 Herald Avenue  
 Coventry Business Park  
 COVENTRY CV5 6UB  
 E: aja@aja-architects.com  
 W: www.aja-architects.com

AJA Architects is the trading style of AJA Architects Consulting Limited (a limited company no. 1047275) and AJA Architects LLP (a limited liability partnership registered in England No. OC334721).  
 client

INTEGRA 61 (DURHAM) Ltd

project

INTEGRA 61, BOWBURN

drawing

Proposed Admin Office  
 Sections  
 Unit DC5

scale 1:100 @ A1 drawn CdeM

checked SPP date 24.03.2022

no

7069-12 - C  
 PLANNING