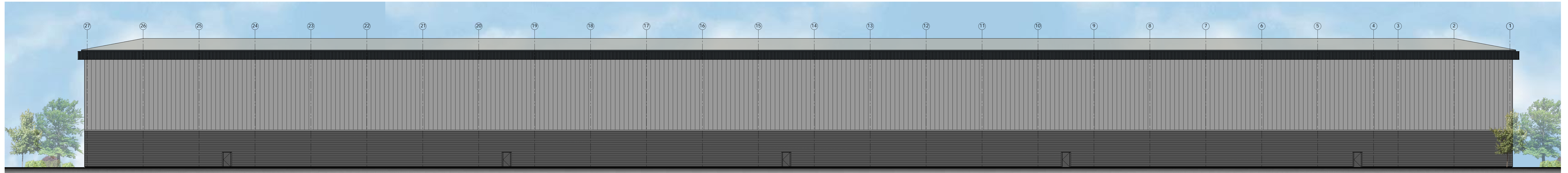


notes
 This drawing and design is the copyright of oja architects ltd and must not be reproduced in part or in whole without prior written consent. Contractors must verify all dimensions on site before commencing work or preparing shop drawings.
 Where this drawing contains any Ordnance Survey mapping material, it has been reproduced under licence number 100022778.
 Ordnance Survey © Crown copyright



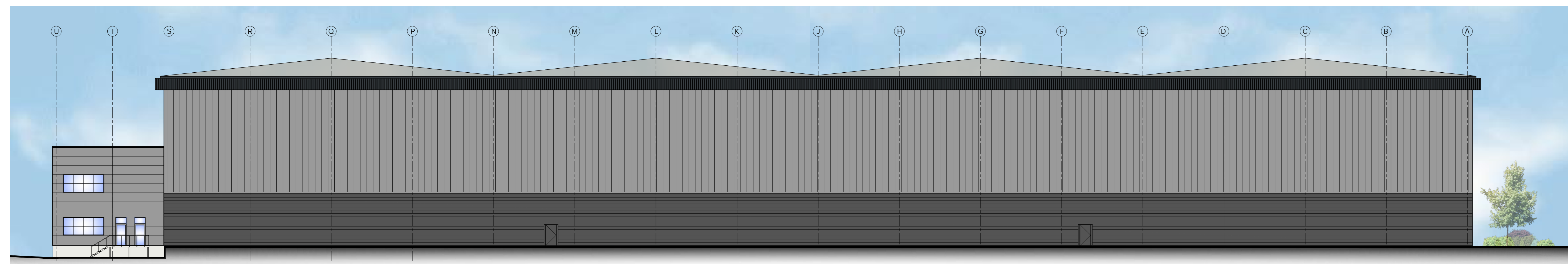
Side Elevation (North West)



Side Elevation (South East)



Front Elevation (South West)



Front Elevation (North East)



SCHEDULE OF MATERIAL

ROOF	HPS200 Ultra Prefinished Profiled Steel Cladding Colour - Copperwing Grey RAL 7038
FEATURE FLASHING	Pressed metal Flashing to projecting eaves. Colour - Anthracite RAL 7016
EXTERNAL WALLS WAREHOUSE	HPS200 Ultra Prefinished Sinusoidal Profiled Steel Cladding Horizontally Laid Colour - Merin Grey (Vertically laid)
EXTERNAL WALLS OFFICES/DC OFFICES	HPS200 Ultra Prefinished Sinusoidal Profiled Steel Cladding Horizontally Laid Colour - Anthracite RAL 7016
CURTAIN WALLING / WINDOWS / DOORS	Micronib Profiled Cladding with pre-formed mitred corners. Merin Grey (Horizontally laid)
CURTAIN WALLING WAREHOUSE	Polyester Powder Coated Aluminium Frame Double Glazed Unit Solar Reflective Glazing Panels (G Value - 0.69), U-value - 1.8 W/m ² K Colour - Anthracite Grey RAL 7016
FIRE EXIT EXTERNAL DOORS	Rockwell Interlocking Polycarbonate Translucent Panels, vertically laid. Module - 500-40 (Above Docks & Building Corners) Colour - White
LOADING DOORS	Polyester Powder Coated Aluminium Frame Double Glazed Unit Colour - Anthracite Grey RAL 7016
	Insulated electrically operated Loading Doors Colour - Anthracite Grey RAL 7016

B: 08/12/2022 Updated to suit construction drawings. rp
 A: 07/04/2022 Updated to 'PLANNING' status. CdeM
 no. date revision by

oja architects
 oja architects ltd
 1170 Elliott Court
 Herold Avenue
 Coventry Business Park
 COVENTRY CV5 6UB W: www.oja-architects.com
 E: oja@oja-architects.com
 OJA Architects is the trading name of OJA Architects Consulting Limited (a limited company
 no. 10079762) and OJA ARCHITECTS LTD is an equal opportunity employer (England No. 05263072)
 client

INTEGRA 61 (DURHAM) Ltd
 project
 INTEGRA 61, BOWBURN
 drawing

Proposed Building Elevations
 Unit DC5
 scale: 1:200 @ A0 drawn: ZJ
 checked: spp date: 18.03.2022
 no.