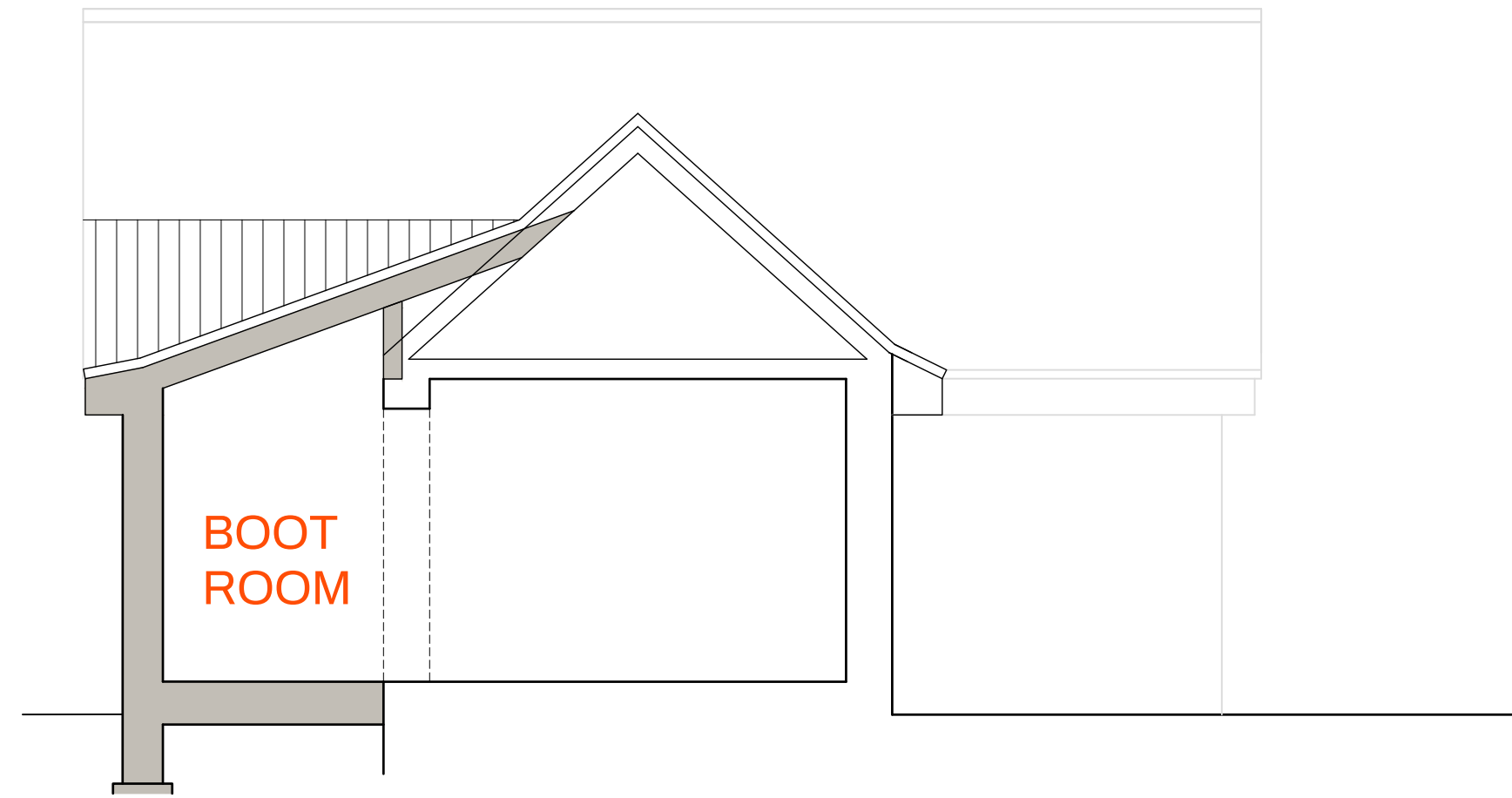
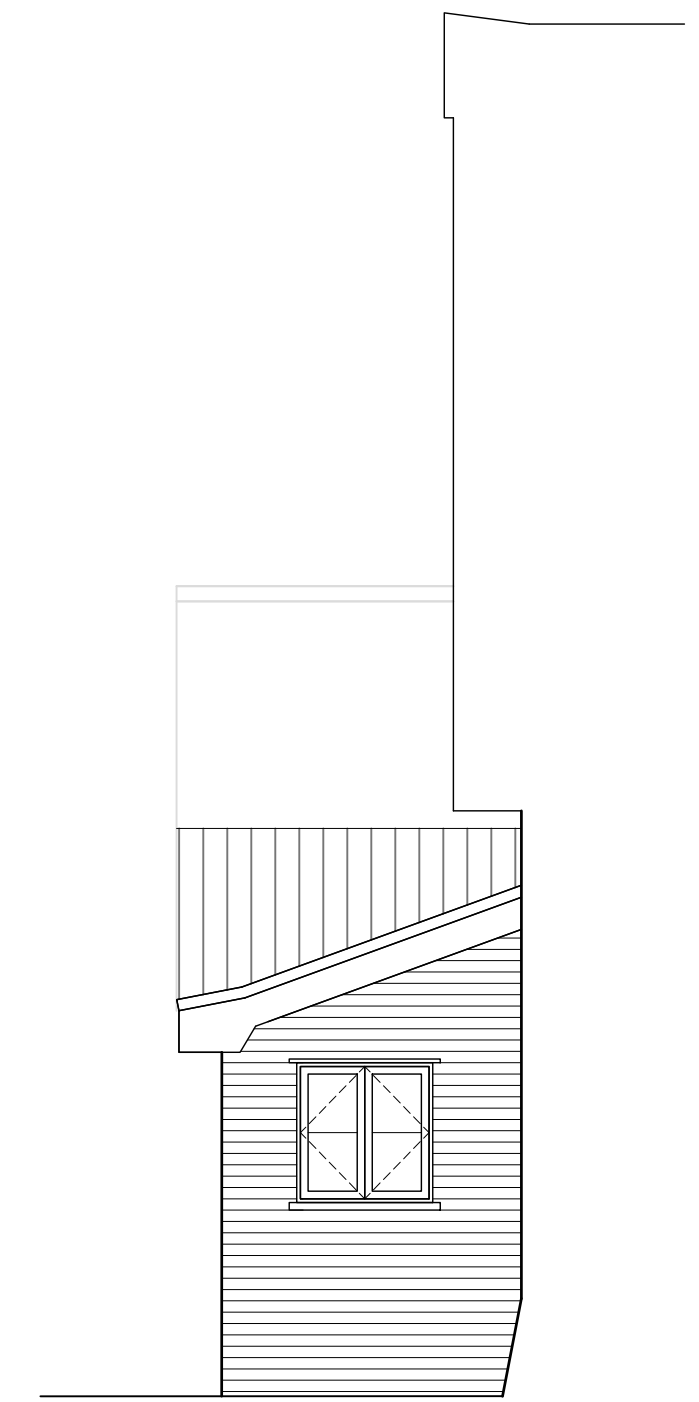




WEST ELEVATION (1)



NORTH ELEVATION (2)



NORTH ELEVATION (2)

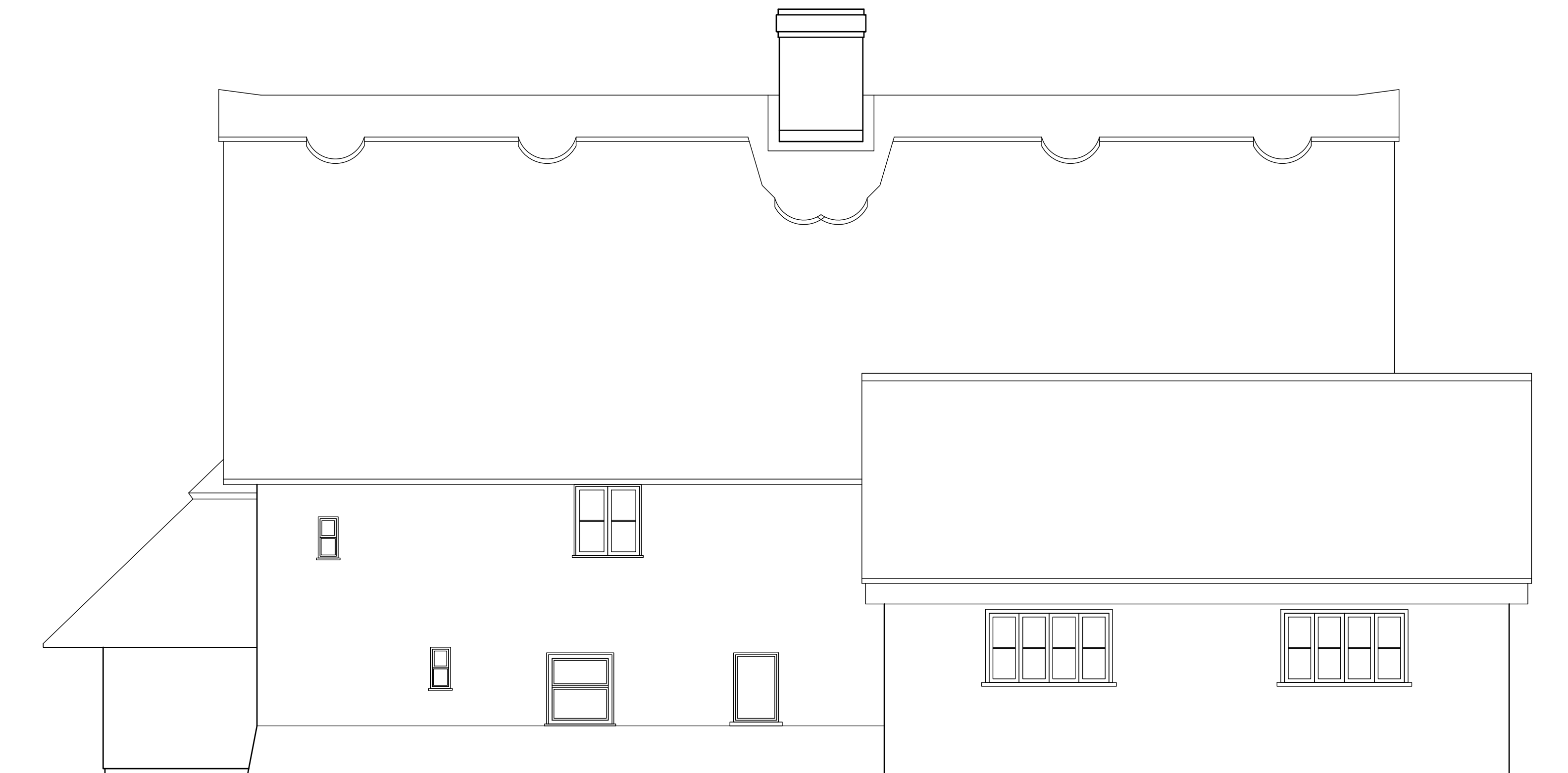
NOTE:

FRONT EXTENSION (SOUTH) NOT ALTERED BY THE WORKS

REFER TO PHOTOGRAPHIC SCHEDULE DRAWING 1030 FOR FURTHER DETAILS



EAST ELEVATION (3)



SOUTH ELEVATION (4)