

Helmingham Primary School

School House office project

Proposed exterior changes



Canopy to be removed.

Fencing to be removed.

Section of low wall to be removed

Shed to be removed

North elevation of School House, showing location of exterior works



Rear of School House from north



Example of fencing to be removed



Example of fencing to be removed



Section of low wall to be removed, adjacent to shed and fencing to be removed



East elevation of School House showing canopy to be removed



Section of low wall to be removed

East elevation of School House



West elevation of School House

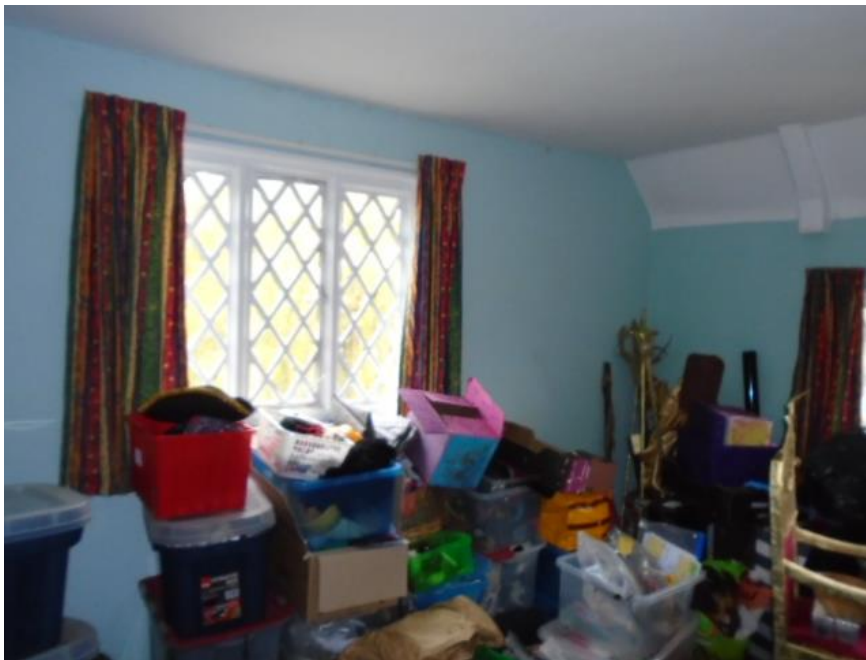


School House interior

Upper floor bathroom, showing window to receive internal secondary glazing (window facing east)



Upper floor Room 20 to be refurbished, including internal secondary glazing (window facing west)



Upper floor Room 21 showing window facing west to receive secondary glazing



Upper floor Room 22 to be refurbished



Upper floor Room 23 to be refurbished



Lower floor Room 16 to be refurbished and repurposed as a Staff Room

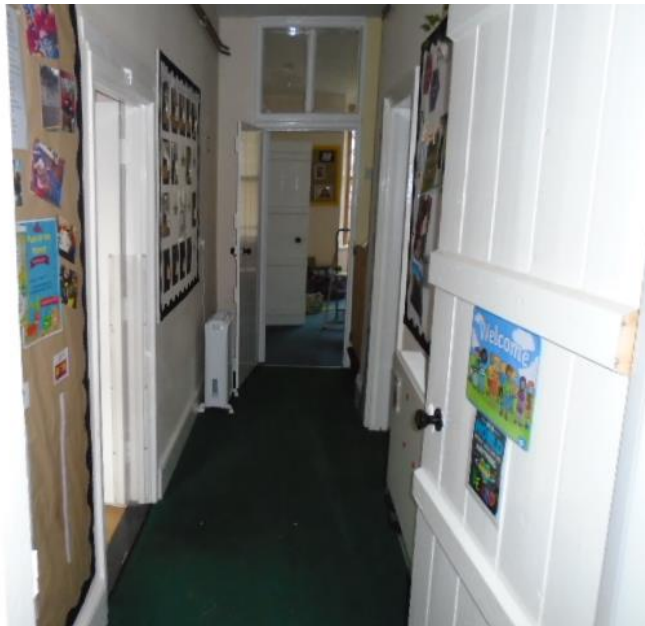


Window facing north to receive secondary glazing

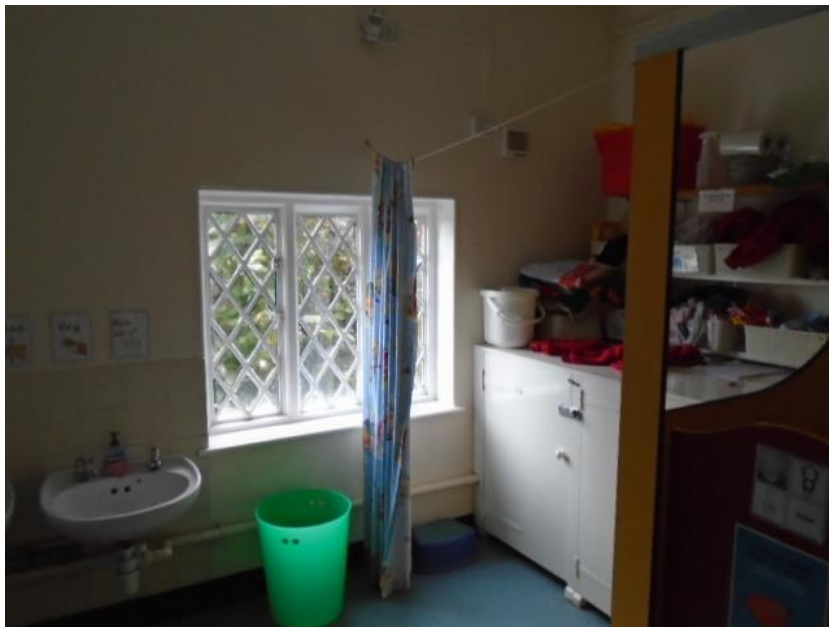
Oil-fired boiler to be replaced with new

Brick floor to remain and be covered in non-permanent material

Lower floor corridor from Room 16 looking west towards Room 17



Lower floor WC to be refurbished, including accessible toilet



Lower floor Room 17 showing bay window facing west to receive replacement secondary glazing



Main staircase



Lower floor lobby



Existing heating distribution system to be extended throughout School House

Lower floor Room 18 showing bay window facing west to receive replacement secondary glazing



Lower floor: existing lighting to be replaced with LED



Lower floor Room 13 to be refurbished



Lower floor Room 13 to be refurbished and repurposed as a Reception



Lower floor Room 15 to be refurbished



Lower floor Room 15 to be refurbished

