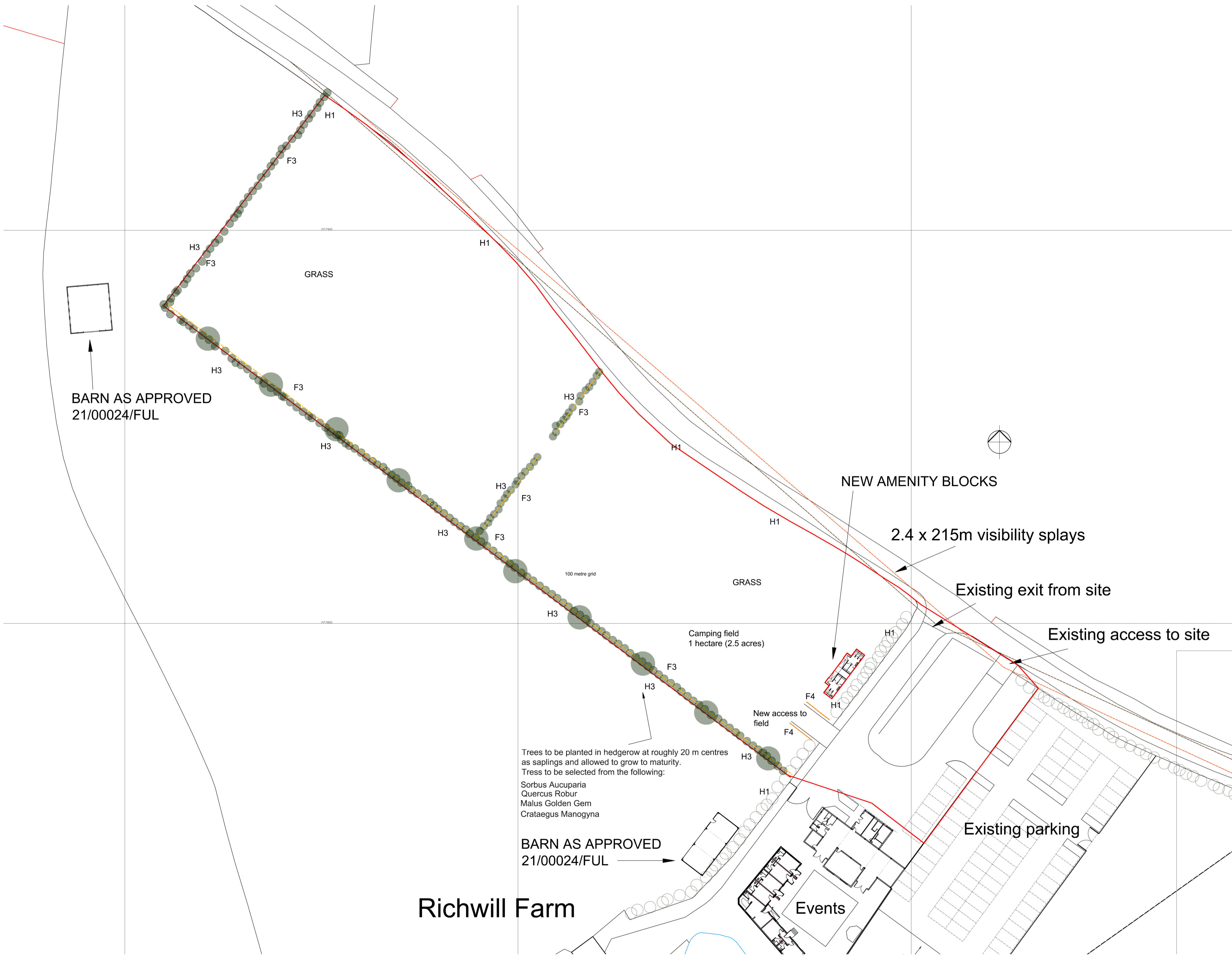


KEY	
F1 -	
F2 -	
F3 - POST & RAIL FENCE. 1.2M HIGH WITH RABBIT WIRE	
F4 - TIMBER POST AND SINGLE DIAMOND RAIL 600MM HIGH	
W1 -	
W2 -	
G - GATE	
H1 - EXISTING HEDGEROW MANAGED AND REINFORCED WITH NATIVE SPECIES AS REQUIRED	
H2- NEW HEDGE TAXUS BACCATA 45cm-60cm PLANTED 4 PER M	
H3 - NEW HEDGE MIX : 50% CHERRY PLUM PRUNUS DOMESTICA 20% HAZEL CORYLUS AVELLANA 10% CRABAPPLE MALUS SYLVESTRIS 10% RUBUS FRITICOSUS 10% WILDFEAR PYRUS COMMUNIS PLANTED 5 PER M DOUBLE ROW STAGGERED.	



BARN AS APPROVED
21/00024/FUL

NEW AMENITY BLOCKS

2.4 x 215m visibility splays

Existing exit from site

Existing access to site

Camping field
1 hectare (2.5 acres)

Existing parking

Trees to be planted in hedgerow at roughly 20 m centres as saplings and allowed to grow to maturity. Trees to be selected from the following:
Sorbus Aucuparia
Quercus Robur
Malus Golden Gem
Crataegus Manogyna

BARN AS APPROVED
21/00024/FUL

Richwill Farm

Events

PROPOSED CAMPING AND CARAVANING SITE

RICHWILL FARM
OAKLEY ROAD
WIX

SITE PLAN
LANDSCAPE

Tim Snow Architects
9A High Street, Brightlingsea
Colchester, Essex CO7 0AF

Scale: 1:500 @ A1
Date: MARCH 2021
Drawing No. 789 / C / 02 A

This drawing and design thereon is copyright and shall not be reproduced without written consent.