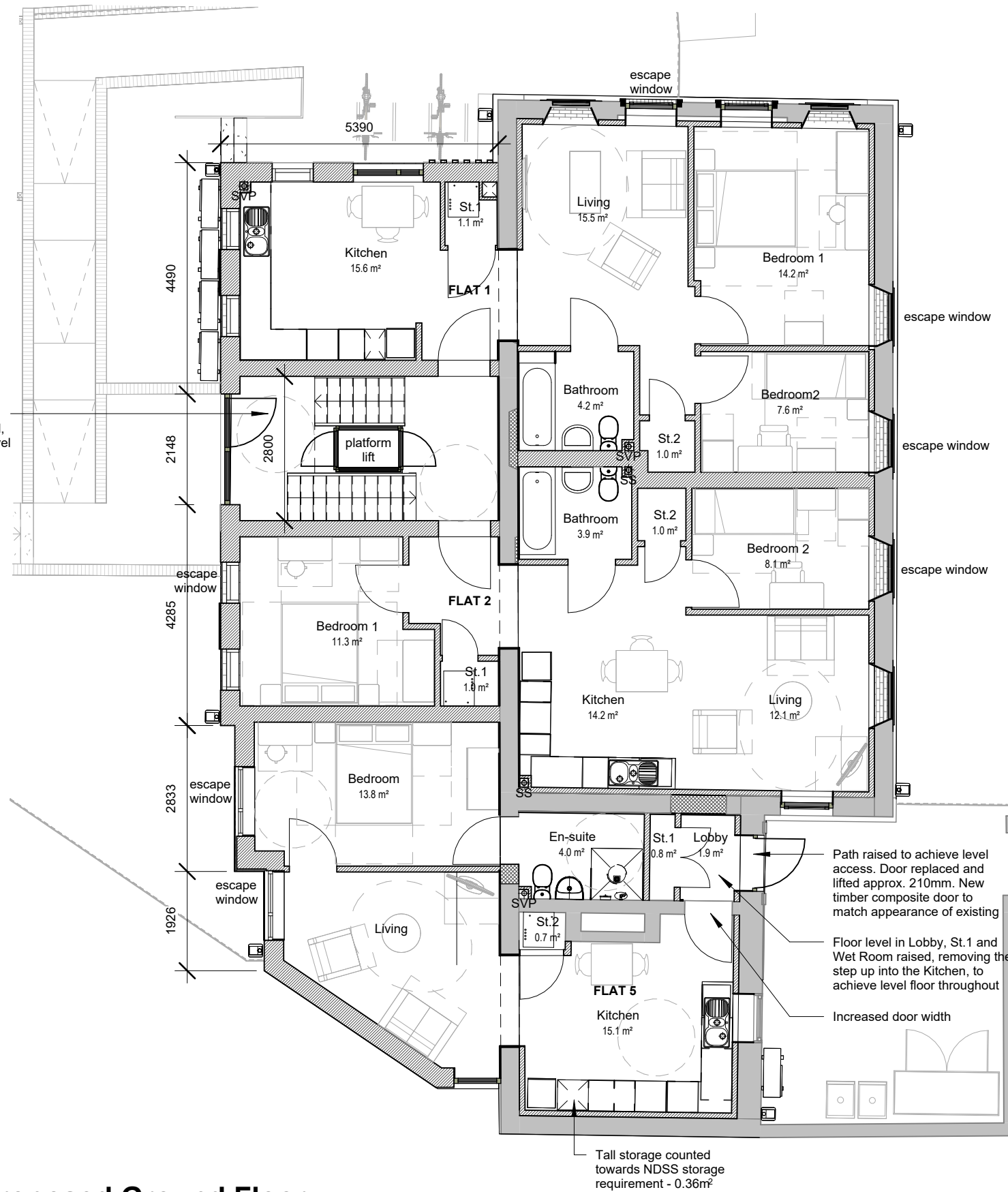
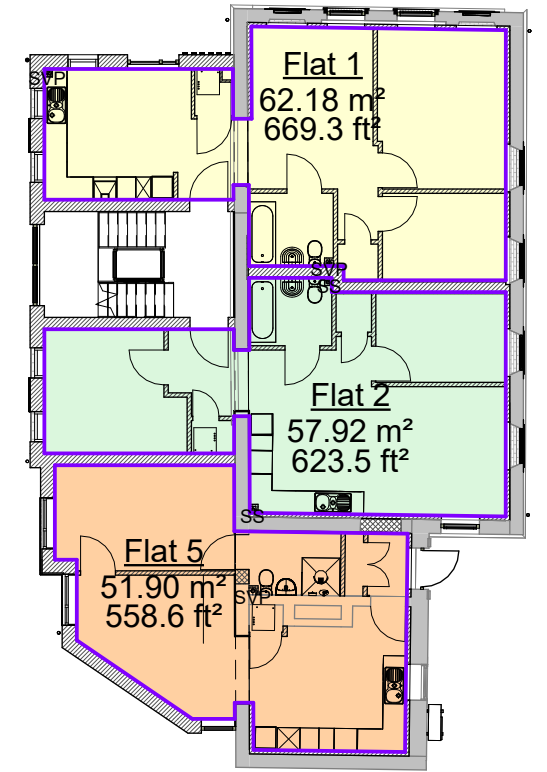


Entrance level 1860mm below ground floor level, allowing for ramped, level access.

3 -1 - Proposed Lower Ground
1 : 100



1 00 - Proposed Ground Floor
1 : 100



2 0 - Ground Floor GIA
1 : 200

Flat 1 - 2B3P Flat @ 62.18m²
 Flat 2 - 2B3P Flat @ 57.92m²*
 Flat 5 - 1B2P Flat @ 51.90m²

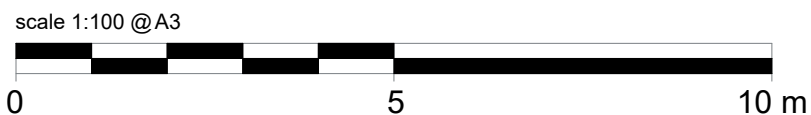
All to Nationally Described Space Standards* and AD M(4) Cat.2 for accessibility.

* Flat 2 below GIA for a 2B3P single storey dwelling (61sqm).

NDSS GIA (single storey dwelling):
 1B2P - 50sqm
 2B3P - 61sqm

P02	24-02-23	Planning drawings updated
P01	20-01-23	Issue for Planning

Rev	Date	Description
Revision Schedule		



Proposed Ground Floor Plan

Project Organisation Function Ref/Level Type Role Number
4018 - HMH - DD - GFX - DR - A - 2010

Karbon Homes
 Apartment Development/ Conversion
 Ebenezer Chapel, Prudhoe

Suitability **S1**
 Suitable for Co-ordination
 Scale **As indicated**
 Revision **P02**
 Preliminary
 Sheet Size **A3**

HMH architects
 HMH Architects, Design Works, William Street, Felling, Gateshead, NE10 0JP
 t: 0191 4870062 e: hmh@hnharchitects.co.uk w: www.hnharchitects.co.uk
 COPYRIGHT HMH ARCHITECTS DIMENSIONS NOT TO BE SCALED SHEET SIZE A3
 P:4018 - Ebenezer Chapel\BIM\01-WIP\BIM-REVIT\4018-HMH-DD-XX-M3-A-0001_EbenezerChapel-S0-P01.01.rvt