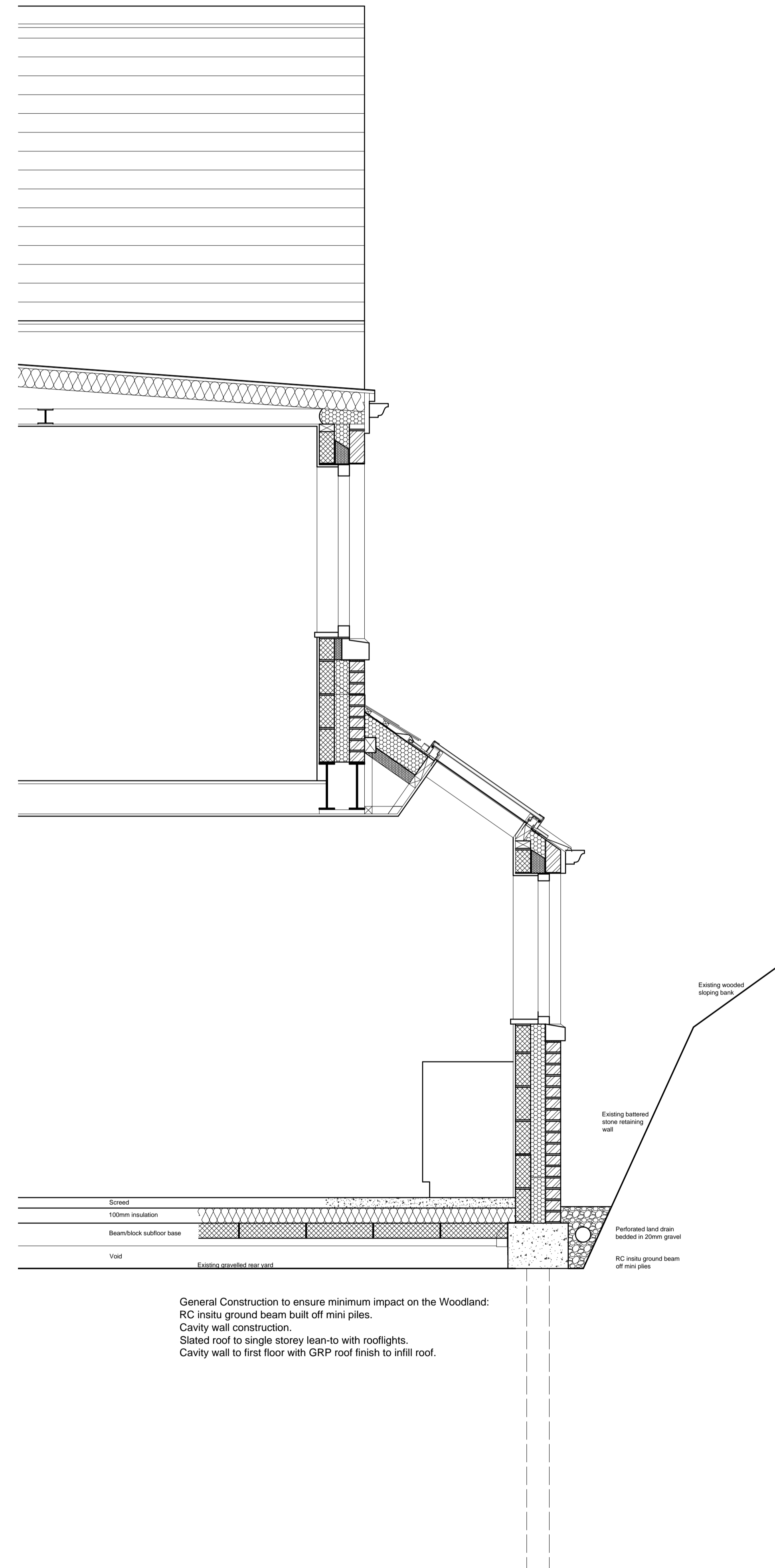
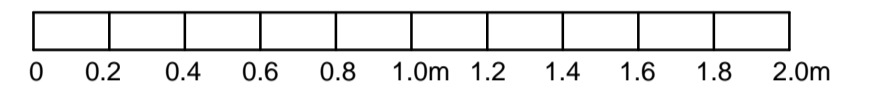


Project name		
Eden House		
Alterations, Extension and New Garage		
Date	Drawn by	Scale
November 2022	KLD	1:20@A1
Job no	Drawing no	Rev
1379	PP15	

For
 Claire & Scott Birch

Drawing title
 Proposed - Planning
 New construction Detail EE

Discrepancies, ambiguities and/or omissions between this drawing and information given elsewhere must be reported to the architect before proceeding.
 This drawing is copyright.
 Dimensions must be checked on site.
 Do not scale off dimensions from this drawing.



General Construction to ensure minimum impact on the Woodland:
 RC insitu ground beam built off mini piles.
 Cavity wall construction.
 Slated roof to single storey lean-to with rooflights.
 Cavity wall to first floor with GRP roof finish to infill roof.