

# NOTES

## Common Hornbeam - *Carpinus Betulus*

Stock type: 10-12cm girth select standard

Planting: To be undertaken between November and February (inclusive).  
Not to begin until after the completion of the construction and after all heavy equipment has been removed from site.

The tree pit is to be wide and deep enough to comfortably accommodate the entire root spread and depth of the roots.  
The base of the pit is not to be disturbed and, if possible, the sub soils and top soils are to be separated.

The tree root collar is to remain at the level of the finished soil allowing for a post planting settlement of up to 10% volume. Back-fill sequence - sub soil first followed by top soil. During planting the back-fill material should be lightly firmed periodically and on completion, ensuring that a depression has not formed around the stem.

Support: Where required the tree should be staked/supported and tied as instructed by the nursery and appropriate to the site conditions.  
Ties are to be flexible and adjustable and the highest tie position must not be more than 1/3rd the height of the tree.

Guards: Tree protection, as instructed by the nursery, should be installed at the time of planting and maintained for at least two years.

Irrigation: The tree must be watered immediately after planting and a second time within 48hrs, then watered once a week during the first two years when no appreciable rainfall is recorded for 10 days or more. In addition, watering must take place at least once every two weeks during the first summer (May-August).

Weed Control: Control of competing vegetation appropriate to site conditions should be implemented and maintained for at least two growing seasons after planting.

## Cherry Laurel (*Prunus Laurocerasus*) hedging

Stock type: Bare root; 40/60cm height

Planting: To be undertaken between September and November (inclusive). Equipment exclusions as before.

Roots to submerged in water for 30 minutes before planting.

Planting distance: 80 - 100cm with the planting hole to wide and deep enough to easily accommodate the root width and height, making sure that the top of the roots are 25 - 50mm below the existing soil level with an allowance for settlement and firming as noted previously.

Water well.

The back-filling top soil is to be mixed with bone-meal or a slow release fertiliser.

Water well when the adjacent soil dries out superficially.

## Gravel parking area (SUDS)

Gravel/shingle laid to a maximum depth of 50mm on a SUDS compliant crushed stone base

Timber edging with hand dug peg fixing

## Permeable paver area A (SUDS)

Permeable concrete pavers laid on a SUDS compliant crushed stone base

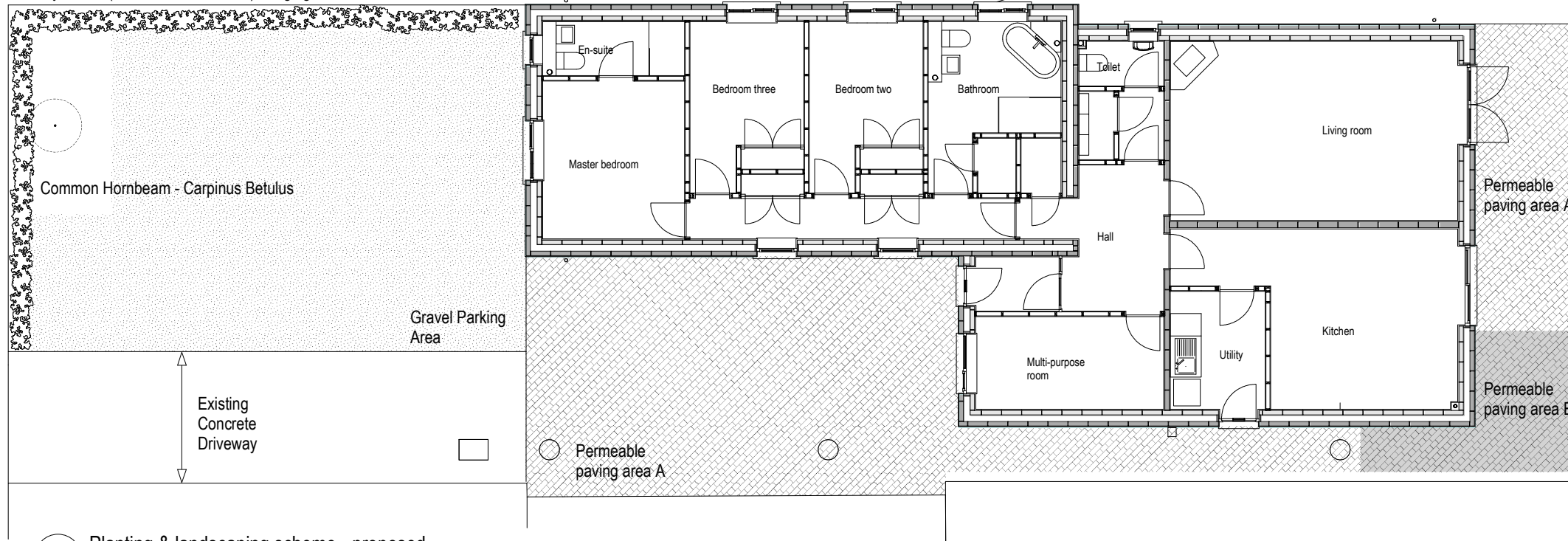
Concrete or brick paver kerbing/edging on a haunched concrete foundation for which the trench is to be dug by hand.

During excavation, roots (or clumps of roots) encountered <25 mm diameter may be pruned back, making a clean cut with a suitable sharp tool (e.g. bypass secateurs or handsaw). Roots (or clumps of roots) encountered >25mm diameter should be severed only following consultation with an arboriculturist

## Permeable paver area B (SUDS) - root protection area

Permeable pavers must be laid using a no-dig technique which allows the removal of a maximum of 50mm of turf/surface vegetation. To allow air and moisture penetration, the pavers are to be laid dry-jointed on a sharp sand or coarse aggregate no-fines foundation. Any such surfacing situated beyond the protective fence must only be laid when the main construction phase has finished and the fencing has been removed

## Cherry Laurel (*Prunus Laurocerasus*) hedging



1 Planting & landscaping scheme - proposed  
Scale 1 : 125

0 1 5m

green igloo

87, Beacon Hill Road, Newark NG24 2JN  
t: 01636 650244  
e: enquiries@green-igloo.co.uk  
e: www.green-igloo.co.uk

Key/ Notes

Rev	Date	Revision

Rev	Date	Revision

30, Thorpe Lane, South Hykeham

Drawing Title

Proposed planting & landscaping scheme - PLANNING

Drawn	Date	Scale	Job Ref	Drawing Number	Rev
CY	Mar 23	1:125 @A3	2206	2206/413	-

Contractors must verify all dimensions on site before commencing any work or making any shop drawings: no dimensions are to be scaled from the drawing. All materials specified on this drawing are to be used strictly in accordance with the manufacturers recommendations and current codes of practice.  
This drawing and the design thereon is the copyright of Green Igloo Limited and must not be reproduced without their written consent.  
All rights reserved.