

LANDSCAPE CONCEPT PROPOSALS

Existing Site

The garden is framed by a road to the north, a farm lane to the east, a barn to the south and open fields to the west. The garden is framed by trees to the west, north and east including poplars, maples and a cluster of fruit trees centrally on the western boundary. The views out to the west are of countryside.

Proposals

The garden will be enclosed by post and rail fencing with a field gate of the farm lane to the east, leading into a gravel arrival, parking courtyard allowing space for cars to turn and park.

The parking court will be framed by a broad shrub border framing the extension elevation and contain white and red plants to provide a complementary contrast to the black timber cladding. A mixed native hedge will soften the western boundary south of the parking court gate.

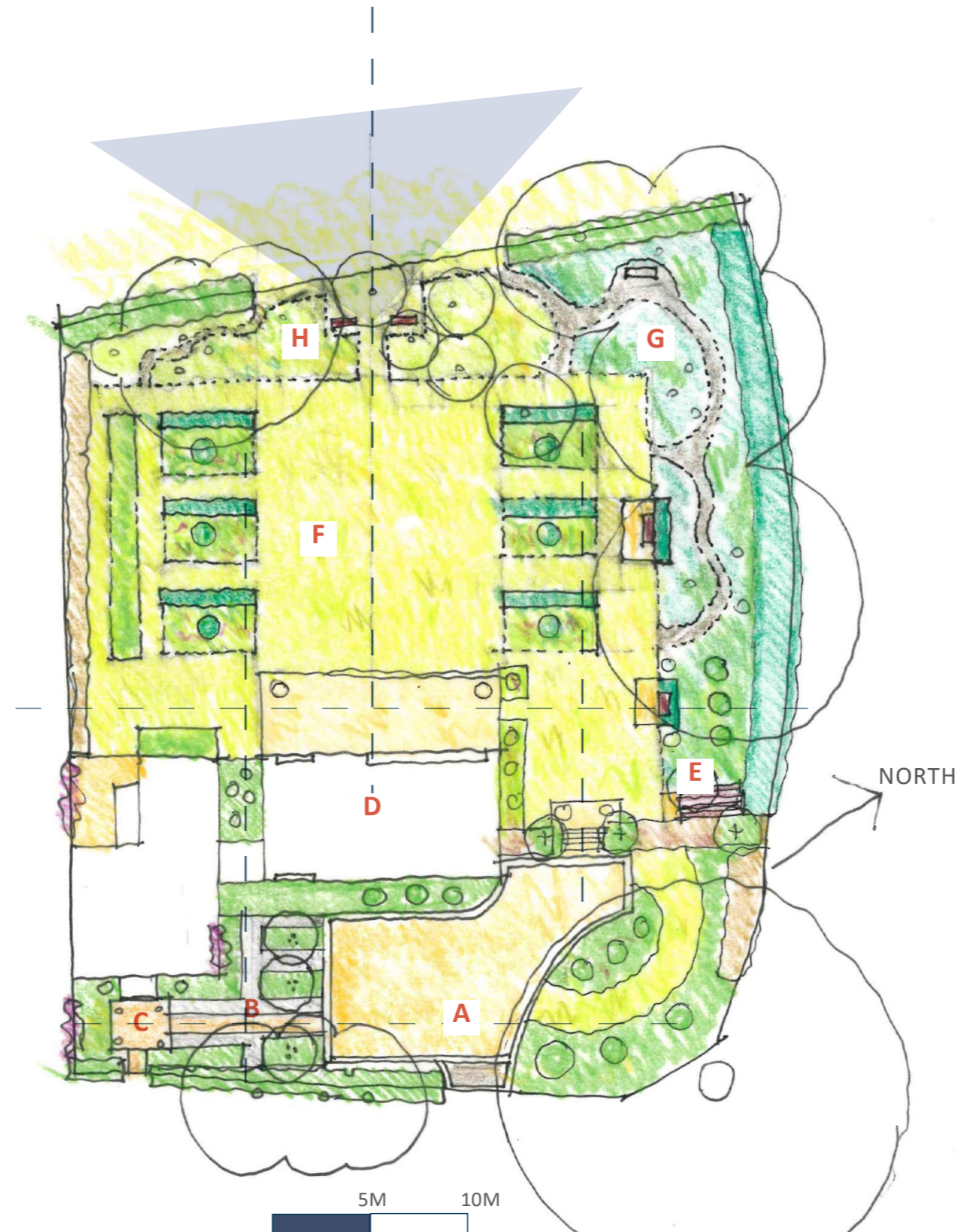
To the south of the parking area will be a terraced landscape with parterre beds and conical holly specimens. A path will lead south to the front door, announced by a square arrival terrace and architectural pots. Climbers will soften blank building elevations and boundary fences.

The mature tree, north east of the site will be protected with the permeable gravel arrival court terminating at the canopy edge and the area beneath being planted with woodland groundcovers and shrubs and a shade tolerant lawn path.

A gate, through a beech hedge will lead into the back garden.

A mixed native hedge containing Holly and Yew will frame the northern boundary with a woodland groundfloor allowed to establish beneath the existing trees.

A broad, sun terrace, in porcelain / stone tiles will be located directly to the rear of the extension overlooking the lawn.



Concept plan

The lawn will be framed by ordered rows of perennial and grass beds containing structural taller grasses or hedges and feature shrubs.

The lawn will lead to a meadow along the western boundary with a cut path leading to an intimate seating space under the fruit trees.

The mixed native hedgerow will frame the view.

A beech hedge will be planted along the southern boundary to screen the fence line and provide seasonal contrast to the lawn and perennial / meadow beds.

The space between the glass link and the new extension will be planted with an evergreen, shade groundcover such as pachysandra sp and clipped, low hedges. Native bulbs will be planted through the groundcover and also in the wider lawn and woodland edge.

The key spaces are listed below:

- A Arrival Court
- B Arrival Terrace
- C Front Terrace
- D Extension
- E Shed and oil tank location
- F Rear lawn with flower beds
- G Woodland garden with bark paths
- H Meadow with informal seating area