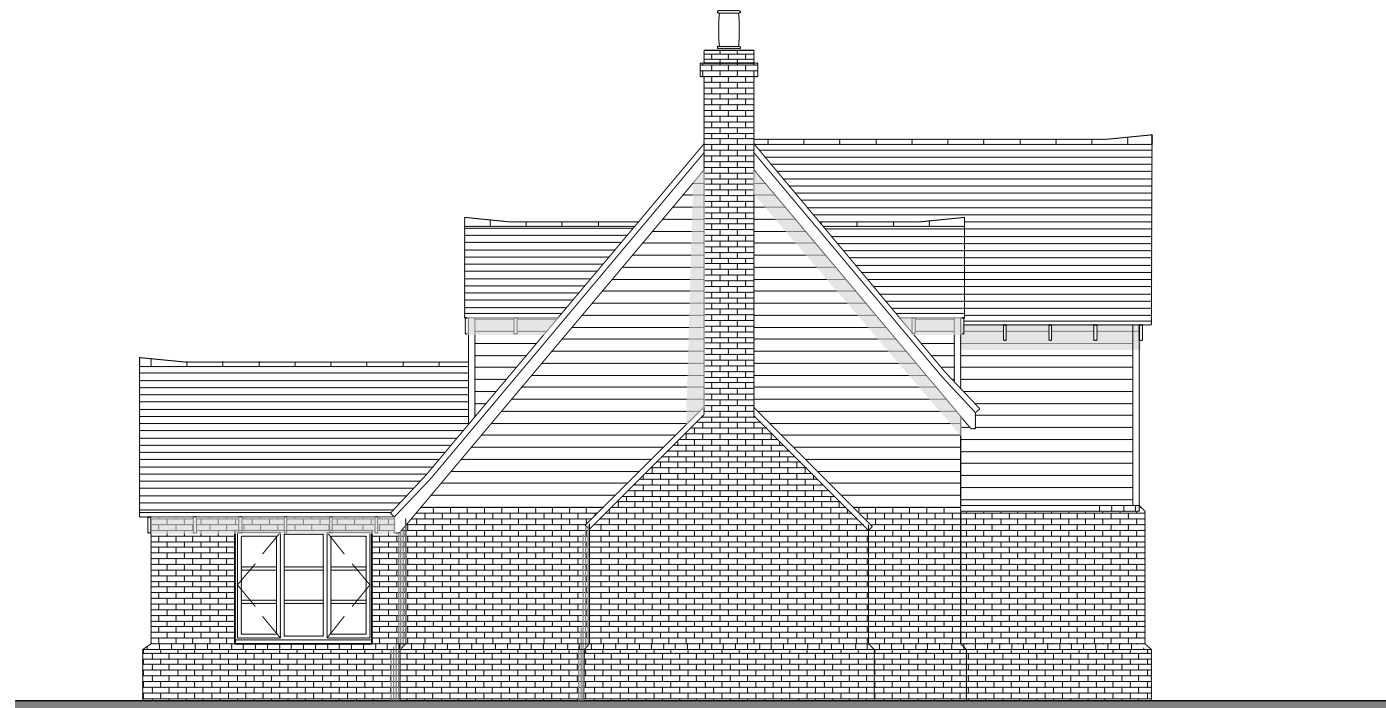


Key.



Side Elevation



Side Elevation

F	12/1/23	Study window size reduced to match utility. I'nook beam removed. Lounge & bed.3 gable windows removed. Sanitaryware relocated. Lounge recess adjacent staircase reduced. reduced width front door sidelights added. Dining rear window depth increased.	KDH	n/a
E	19/12/22	Kitchen rear window replaced by 2no. narrower items.	KDH	n/a
D	15/8/22	Kitchen/utility partition repositioned.	KDH	n/a
C	10/8/22	Structural beam mod to kitchen reversed. Hall/lounge partition & doorway revised.	KDH	n/a
B	4/8/22	Structural beam reoriented to kitchen to accommodate wider rear window.	KDH	n/a
A	18/7/22	Structural post added to kitchen island. Window added to kitchen rear. Stairwell rooflight added. Remaining elevations compiled.	KDH	n/a
SK04	20/6/22	GF internal dimensions indicated. Dining bi-folds removed. Minor layout adjustments to FF.	KDH	n/a
SK02	6/6/22	Lounge depth reduced & render panel indicated to front. Lobby converted to open porch. Internal layout rearranged at GF.	KDH	n/a
SK01	31/5/22	Initial sketch plan.	KDH	n/a
Rev:	Date:	Description:	Drawn:	Checked:

Site Address:
1 Stringers Lane,
Aston, Hertfordshire, SG2 7EF

Drawing Title:
Side Elevations

Job Number: 22-036 Drawing Number: E2 Revision: F

Drawing Scale (UNO): 1:100@A3

POTTON

Potton
Eltisley Road,
Great Gransden,
Beds, SG19 3AR

Tel: 01767 676400
E-mail: sales@potton.co.uk
Web: www.potton.co.uk

This document is the copyright of Kingspan Timber and is made available on the express condition that it shall not be used in connection with the erection of any building or the production of any components for such a building unless the building to be erected or the components are supplied by Kingspan Timber Solutions Ltd.

© Kingspan Timber Solutions Ltd.

PLANNING

This drawing has been prepared to support the planning application. This drawing is not to be used for construction purposes, detailed construction drawings will be provided dependent on planning permission and order placement.