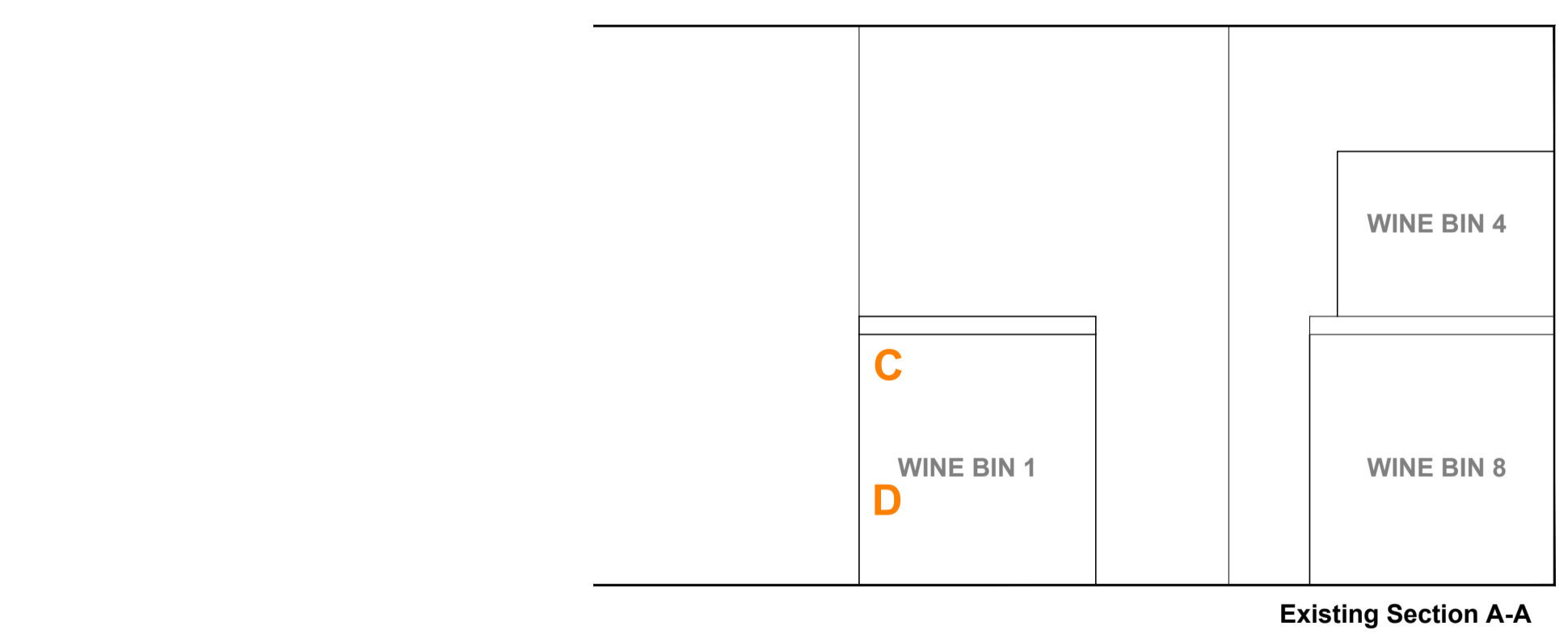
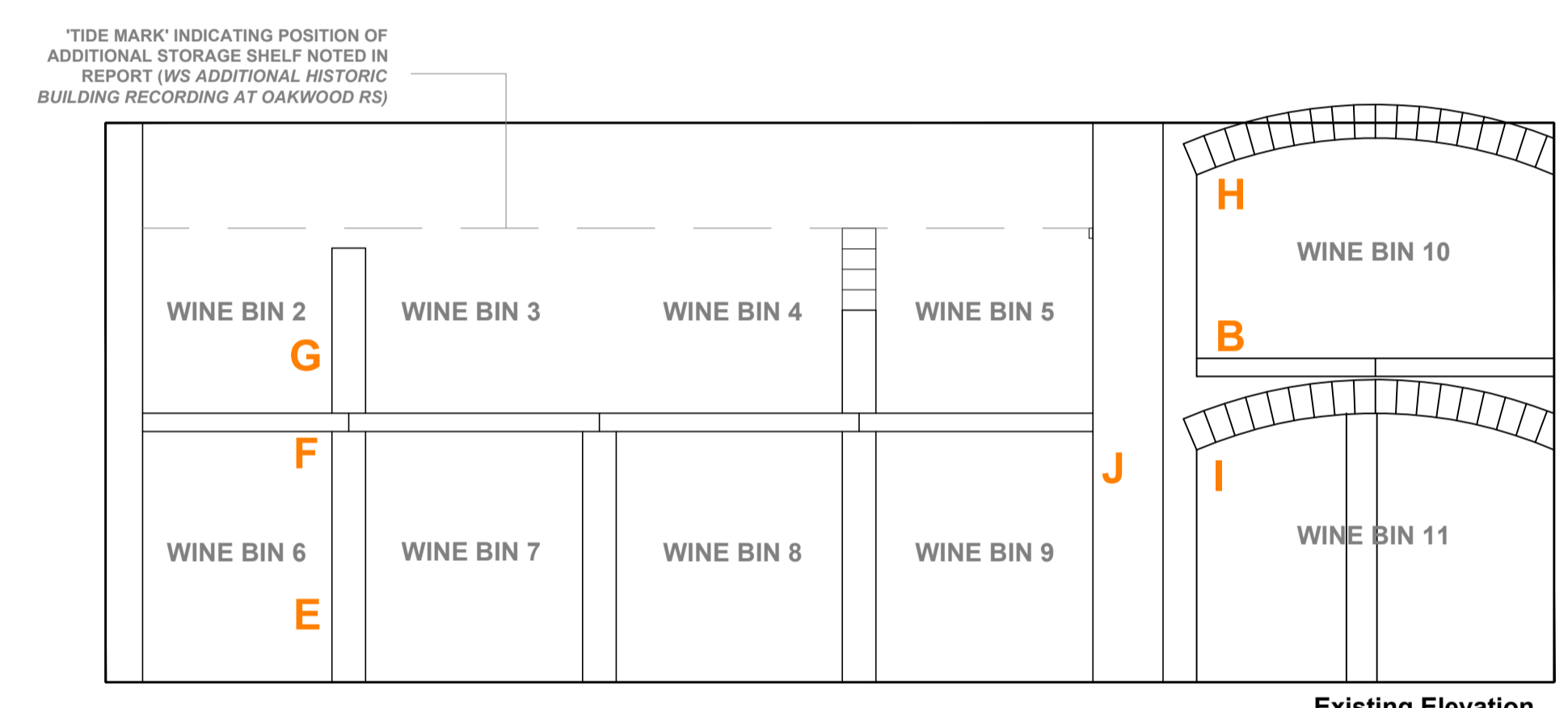
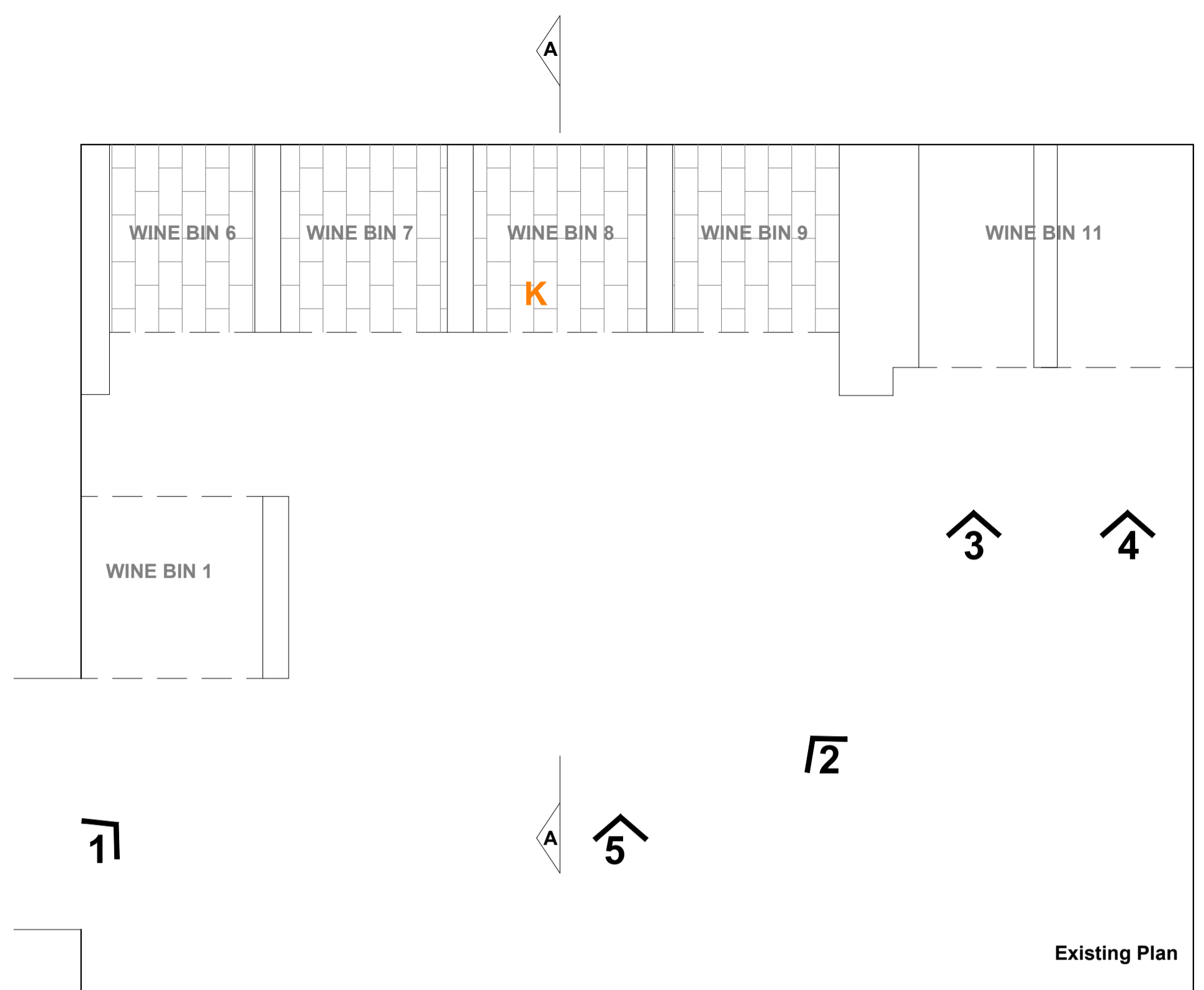
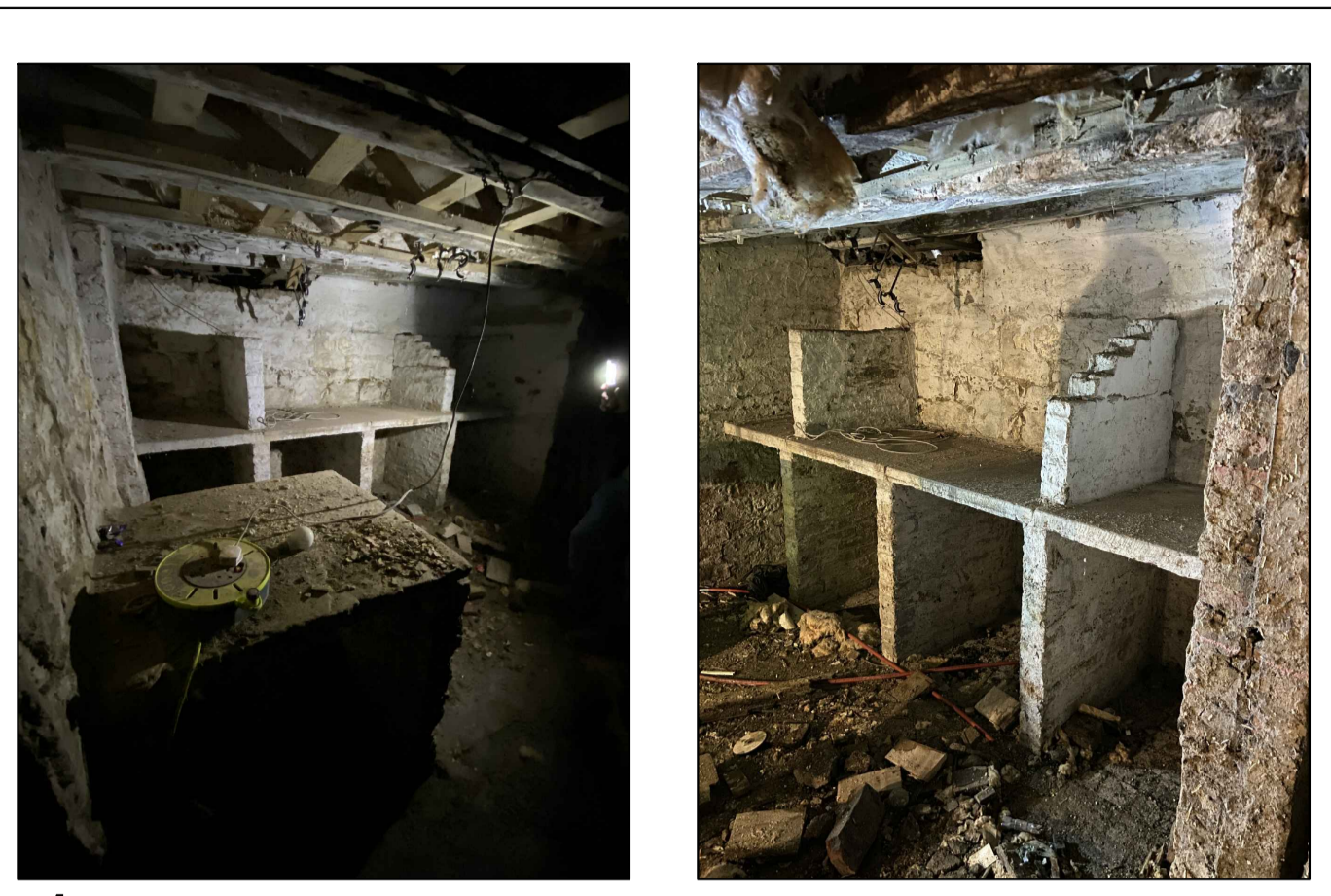


Do not scale the drawing. Use figured dimensions in all cases. Check all dimensions on site. Report any discrepancies to BH Architecture before proceeding. Please note that this layout has been based upon survey information received from the Client. This drawing is subject to full consultation with statutory bodies and associated consents.

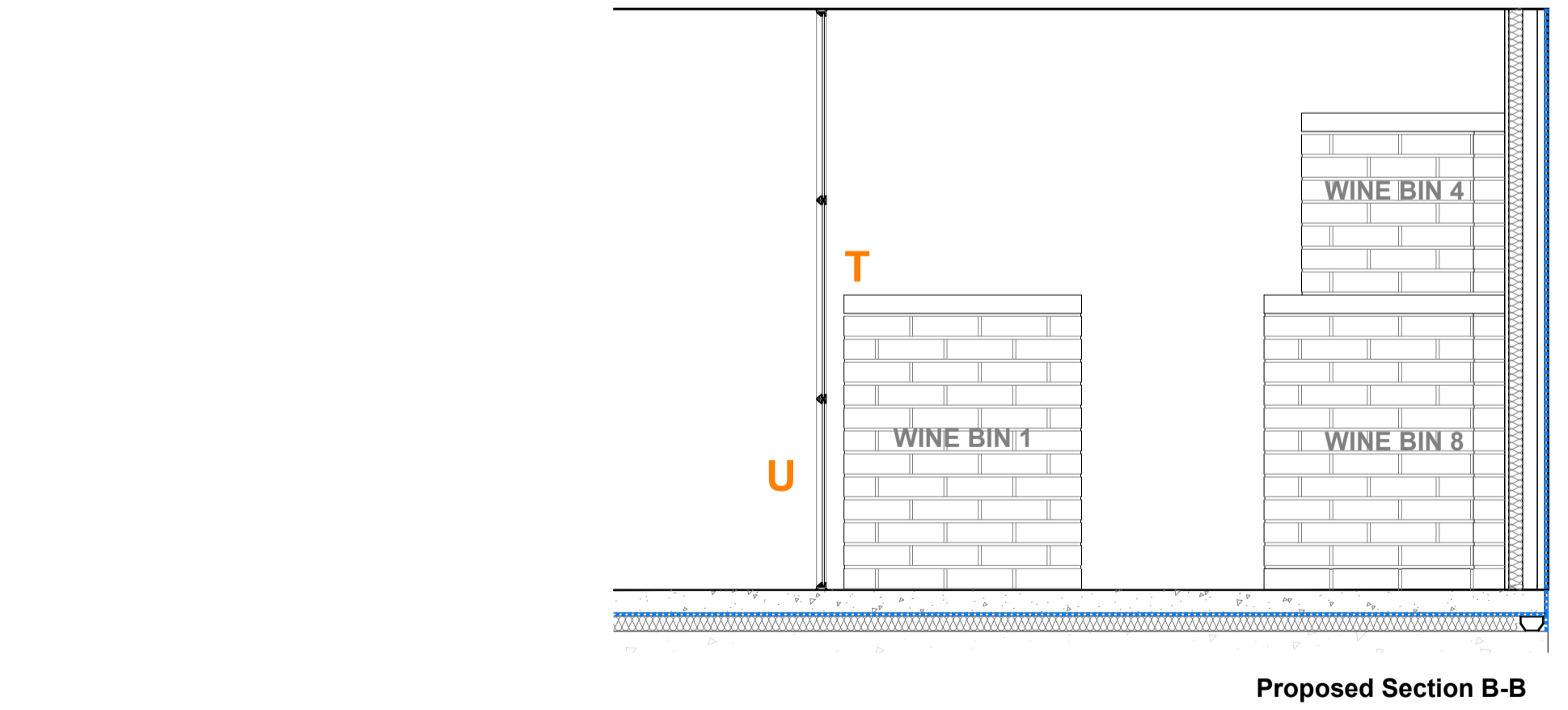
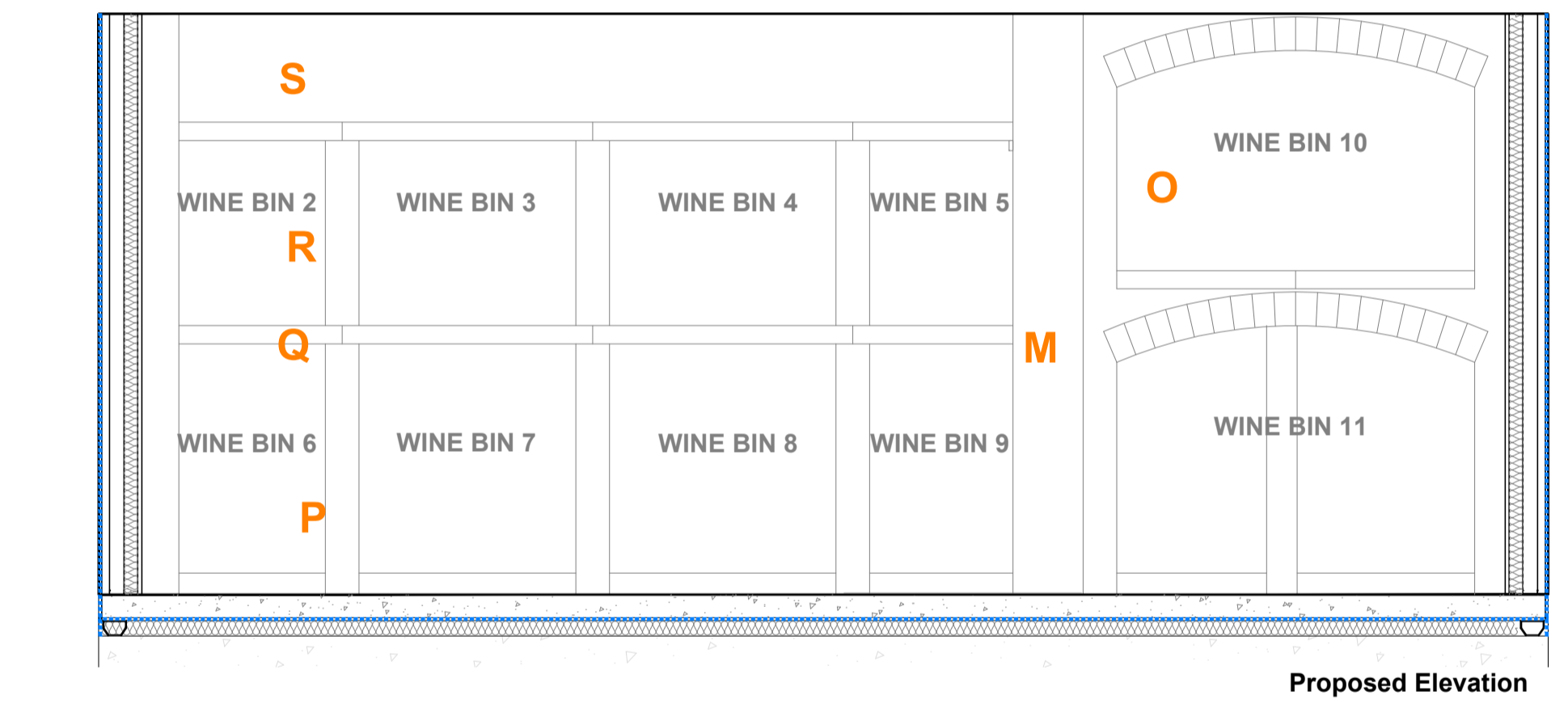
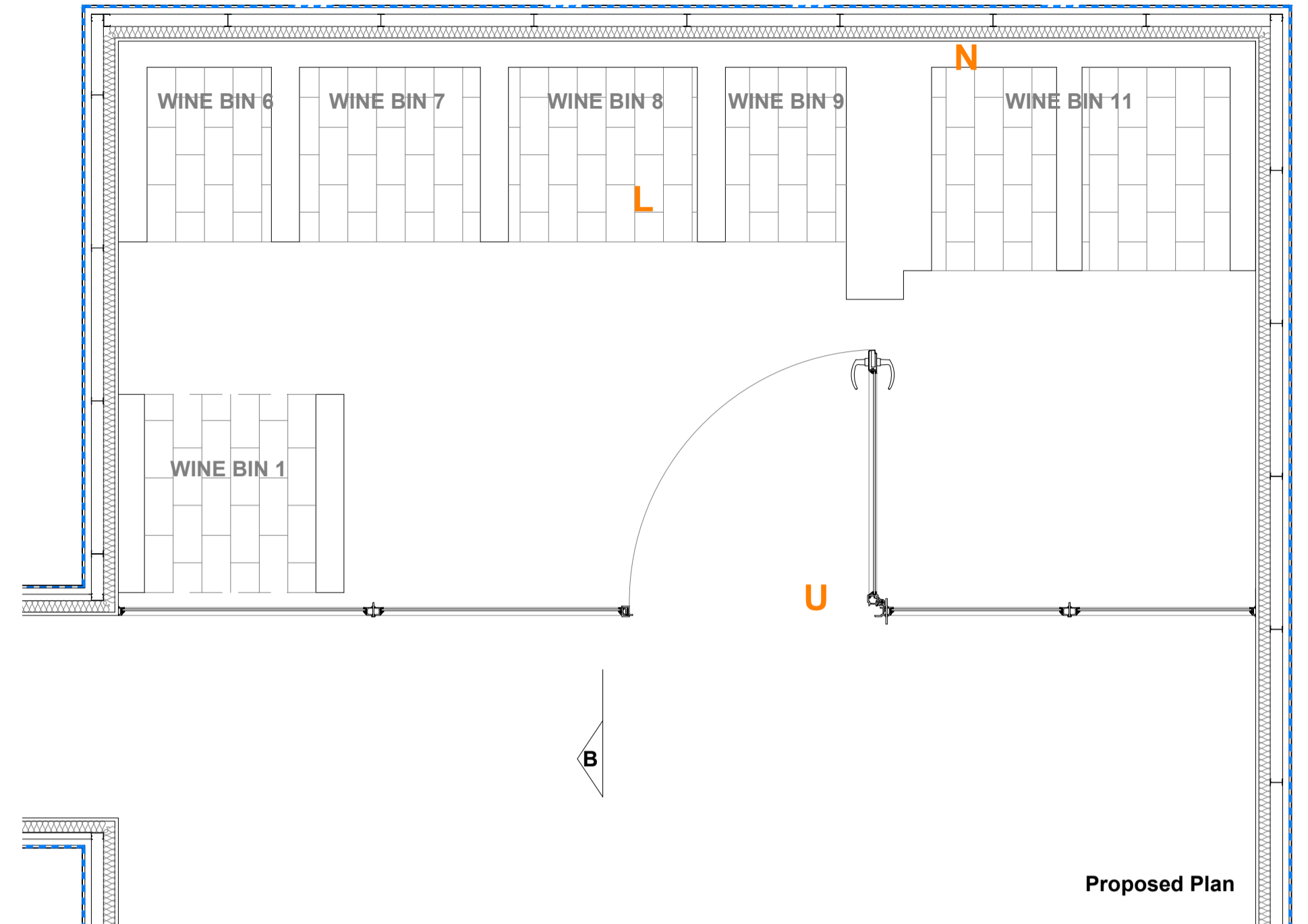


EXISTING



EXISTING PHOTOGRAPHS

PROPOSED



PROPOSED METHOD STATEMENT FOR THE CAREFUL REMOVAL AND REINSTATEMENT OF WINE BINS WITHIN THE BASEMENT

- | | | | |
|--|---|--|---|
| <p>A FULL SET OF PHOTOGRAPHS TO BE TAKEN OF WINE BINS WITH IDENTIFICATION NUMBERS</p> <p>B TEMPLATE CREATED FOR ARCHES TO BINS 10 AND 11.</p> <p>C NUMBER AND LABEL SANDSTONE TOP TO BIN 1. CAREFULLY REMOVE AND STORE SAFELY FOR REINSTATEMENT</p> <p>D LABEL BRICKS WITHIN DWARF WALLS TO BIN 1. CAREFULLY REMOVE, CLEAN, ASSESS USABILITY AND STORE SAFELY FOR REINSTATEMENT</p> <p>E LABEL REMAINING BRICKS WITHIN DWARF WALLS TO BINS 2-5. CAREFULLY REMOVE, CLEAN, ASSESS USABILITY AND STORE SAFELY FOR REINSTATEMENT</p> <p>F NUMBER AND LABEL SANDSTONE TOPS TO BINS 6-9. CAREFULLY REMOVE AND STORE SAFELY FOR REINSTATEMENT</p> | <p>G LABEL BRICKS WITHIN DWARF WALLS TO BINS 6-9. CAREFULLY REMOVE, CLEAN, ASSESS USABILITY AND STORE SAFELY FOR REINSTATEMENT</p> <p>H LABEL BRICKS TO ARCHED BIN 10. CAREFULLY REMOVE, CLEAN, ASSESS USABILITY AND STORE SAFELY FOR REINSTATEMENT</p> <p>I LABEL BRICKS TO ARCHED BIN 11, INCLUDING DWARF WALL. CAREFULLY REMOVE, CLEAN, ASSESS USABILITY AND STORE SAFELY FOR REINSTATEMENT</p> <p>J LABEL BRICKS TO SEPARATING WALL BETWEEN WINE BINS 5/9 AND 10/11. CAREFULLY REMOVE, CLEAN, ASSESS USABILITY AND STORE SAFELY FOR REINSTATEMENT</p> <p>K CAREFULLY DIG UP BRICKS WITHIN FLOOR TO WINE BINS, CLEAN, ASSESS USABILITY AND STORE SAFELY FOR REINSTATEMENT</p> | <p>L ONCE NEW SCREED IS IN PLACE USE BRICKS RECLAIMED FROM FLOOR TO REBUILD THE BASE OF THE WINE BINS.</p> <p>M REBUILD THE THICK SEPARATING WALL USING EXISTING BRICKS OR WHERE BRICKS UNUSABLE SIMILAR AND APPROVED</p> <p>N BUILD SUPPORTING WALL TO REAR OF WINE BINS USING RECLAIMED SIMILAR AND APPROVED BRICKS.</p> <p>O REBUILD ARCHED WINE BINS 10 AND 11 TO TEMPLATE, USING EXISTING BRICKS OR WHERE BRICKS UNUSABLE SIMILAR AND APPROVED</p> <p>P REBUILD DWARF WALLS TO WINE BINS 6-9 USING EXISTING BRICKS OR WHERE BRICKS UNUSABLE SIMILAR AND APPROVED</p> | <p>Q CAREFULLY CUT DOWN SANDSTONE TOPS TO WINE BINS 6 AND 9 AND FIT INTO PLACE ALONGSIDE TOPS TO 7 AND 8.</p> <p>R REBUILD DWARF WALLS TO BINS 2-5 AND TAKE THE WALLS UP TO SHADOW LINE INDICATED IN HERITAGE STATEMENT. USE SIMILAR AND APPROVED BRICKS TO BUILD ADDITIONAL WALL BETWEEN BINS 3 AND 4</p> <p>S SOURCE SIMILAR AND APPROVED SANDSTONE TOPS FOR WINE BINS 2-5</p> <p>T REBUILD WINE BIN ONE. INCLUDE SUPPORTING WALL TO REAR OF WINE BIN USING SIMILAR AND APPROVED BRICKS.</p> <p>U INSTALL NEW GLAZED SCREEN TO FRONT OF WINE BINS WITH DOOR ACCESS</p> |
|--|---|--|---|

[S4]	[P03]	04/04/2023	CK	DB
PLANNING ISSUE				
[S4]	[P02]	30/03/2023	CK	DB
ADDITIONAL NOTES INCLUDED				
[S4]	[P01]	15/03/2023	CK	DB
[P01] FIRST ISSUE				
Revision				
<p>BLAKE HOPKINSON BH+</p> <p>architecture + design ltd</p> <p>11 New Quay North Shields-Tyne&Wear-NE28 6LQ - 0191 2570022</p> <p>ARCHITECTURE: www.bharchitects.co.uk</p> <p>INTERIOR DESIGN: www.blakehopkinson.co.uk Company No. 6493963</p> <p>BHA Project No: RES997</p> <p>Project Name: Oakwood Hall</p> <p>Holeyn Hall Road, Wylam</p> <p>Drawing Title: Wine Bins - Details</p> <p>Existing and Proposed works</p> <p>Model File Name: [RES997-BHA-V1-ZZ-DR-A-5000]</p> <p>Drawn By: CK Date Drawn: 15/03/23</p> <p>Checked By: DB Date Checked: 15/03/23</p> <p>Scale at A1: 1:20 Suitability: S4 Revision: P03</p> <p>File Name: RES997-BHA-DT-ZZ-DR-A-4001</p> <p>© Blake Hopkinson Architecture + Design Ltd</p>				