

Main roof finished with Natural slates

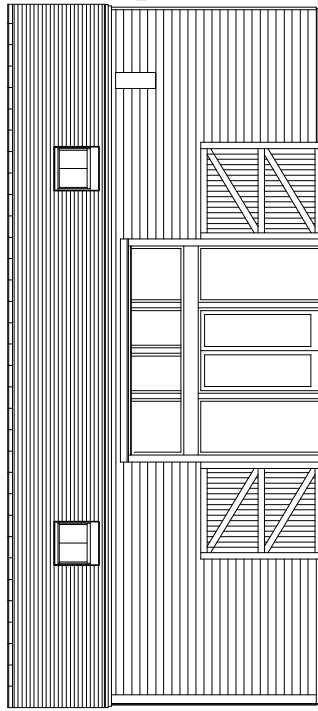
Gutters and downpipes to be in cast iron painted black

bat box

External walls finished with horizontal feather-edge boarding stained black

Windows and doors to be timber painted black

PROPOSED FRONT (north facing) ELEVATION



Conservation style roof windows

bat box

External walls finished with horizontal feather-edge boarding stained black

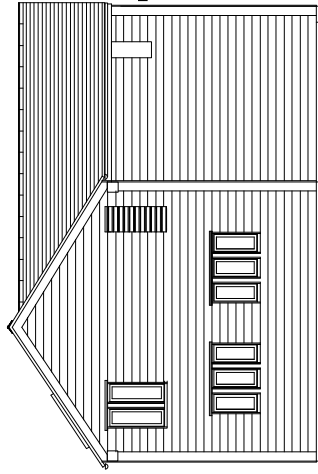
External walls finished with horizontal feather-edge boarding stained black

Existing glazing to be removed from front frame and doors clad with vertical timbers. Doors to be fixed back in the open position.

These glazed screens

PROPOSED REAR (south facing) ELEVATION

PROPOSED SIDE (west facing) ELEVATION



bat box

# Grove Barn

Rev. A - Revised elevations - 24.10.2021

PROJECT

Proposed barn conversions at Lakehouse Farm, Finchingfield Road, Hempstead, CB10 2PR

CLIENT

Humphrey Homes Ltd

DETAIL

Proposed Elevations for Grove Barn

Alan Baker  
Architectural Services  
55, Back Road, Linton,  
Cambridge, CB21 4JF

01223 893516

DATE DRAWN BY

May 2021 Alan Baker

SCALE CHECKED BY

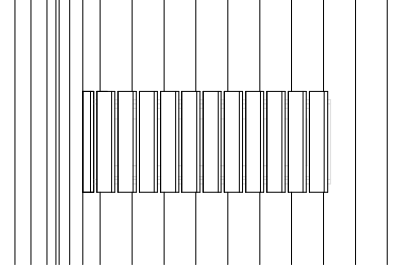
1 : 100 at A3

DRAWING NO. REVISION

2021/231 - 05

A

PROPOSED SIDE (east facing) ELEVATION



Outline of window behind louvres

Actual view of louvres with window behind.

WINDOW ELEVATIONS WITH TIMBER LOUVRES OVER

