

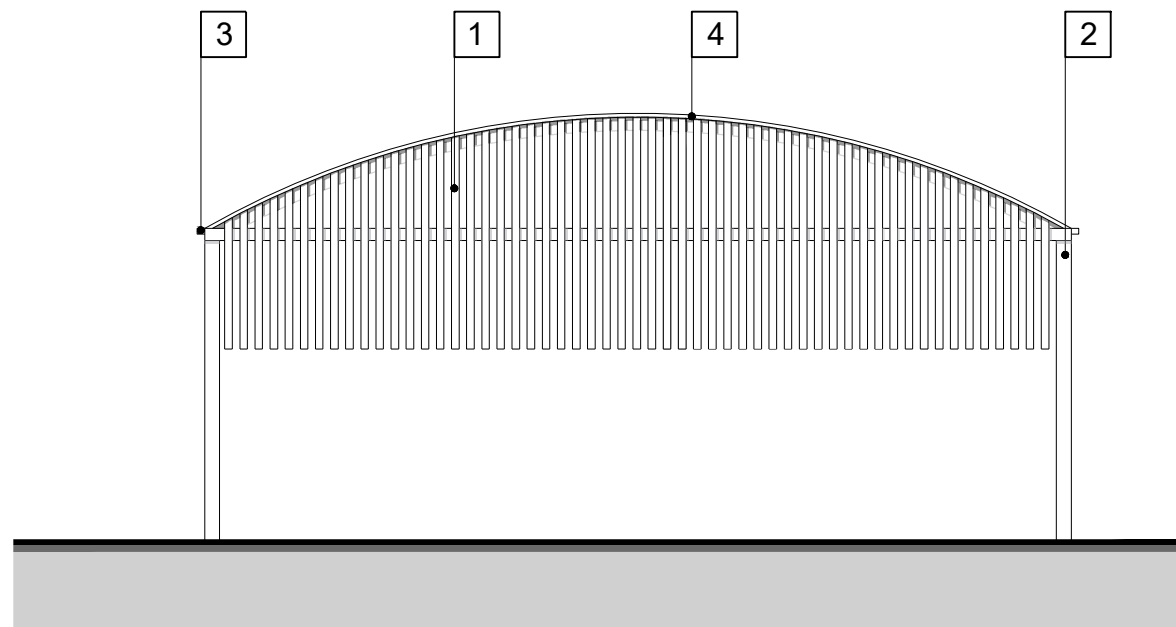
This line should measure 50mm when printed correctly

This drawing is the copyright of Roberts Limbrick Ltd and should not be reproduced in whole or in part or used in any manner whatsoever without their written permission.

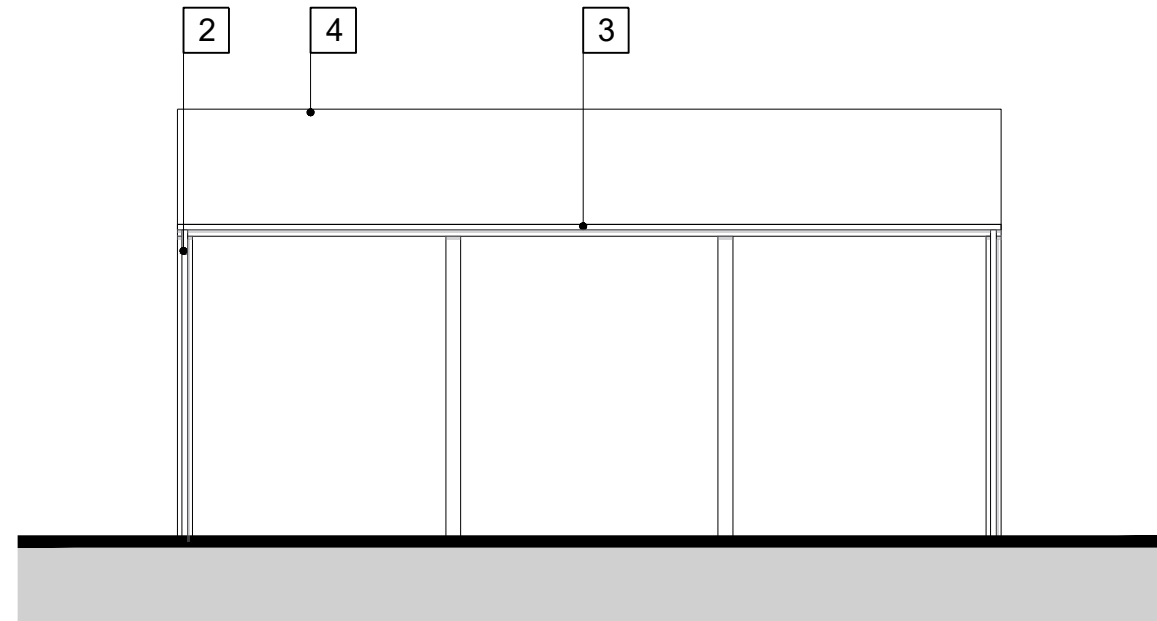
Responsibility is not accepted for errors made by others in scaling from this drawing. Use only figured dimensions and report any discrepancies or omissions to the Architect immediately.

Rev Date By Chk Description

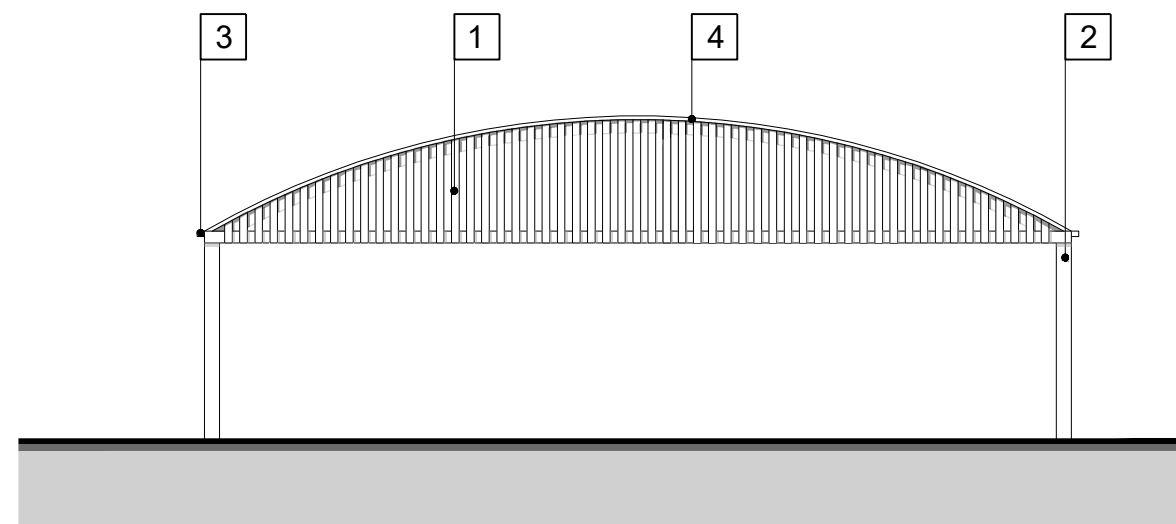
C01 10.05.2023 FG DW First Issue



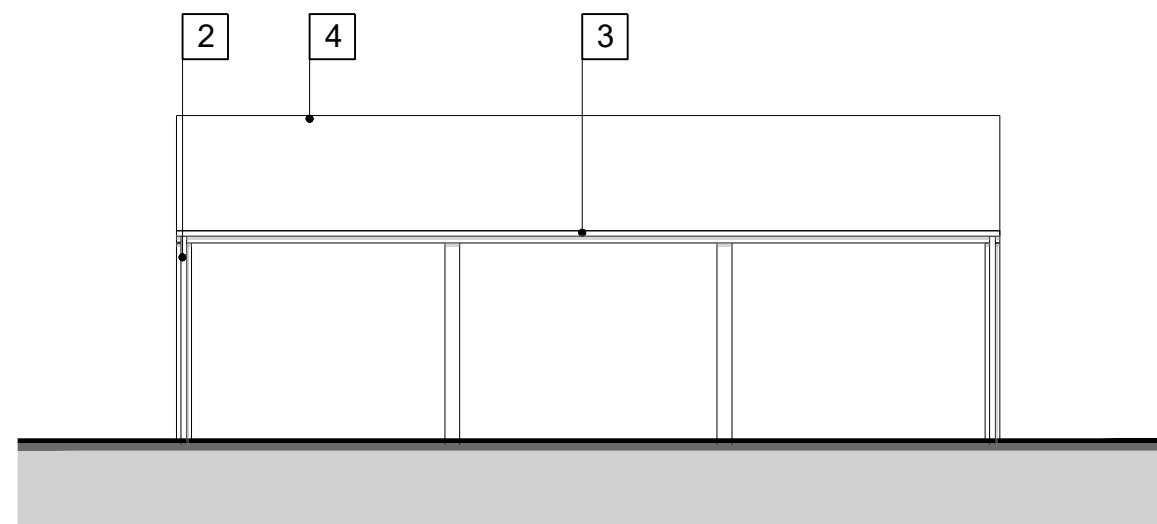
Elevation A-A



Elevation B-B



Elevation C-C

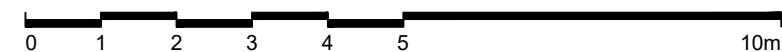
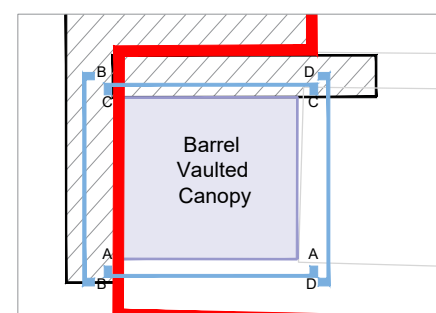


Elevation D-D

MATERIAL KEY

- 1 Timber Hit and Miss Cladding
- 2 Pale Grey Canopy Structure
- 3 Pale Grey Powder Coated Rainwater Goods
- 4 Fabric Covering

KEY PLAN - NTS



Roberts Limbrick

03333 405 500
mail@robertslimbrick.com
robertslimbrick.com

Registered Office: England No. 06658029

Project Name

Sixth Form Expansion
-

Client Name

Burford School
-

Drawing Title

Proposed Canopy Elevations
Sheet 1 of 2
-

Scale

1/100 • A3

Project No.

10637

Status

A3

Purpose Of Issue

Issued for Planning

Project	Org	Vol	Level	Form	Role
10637	RL	XX	00	DR	A

Number

P2410

Revision

C01