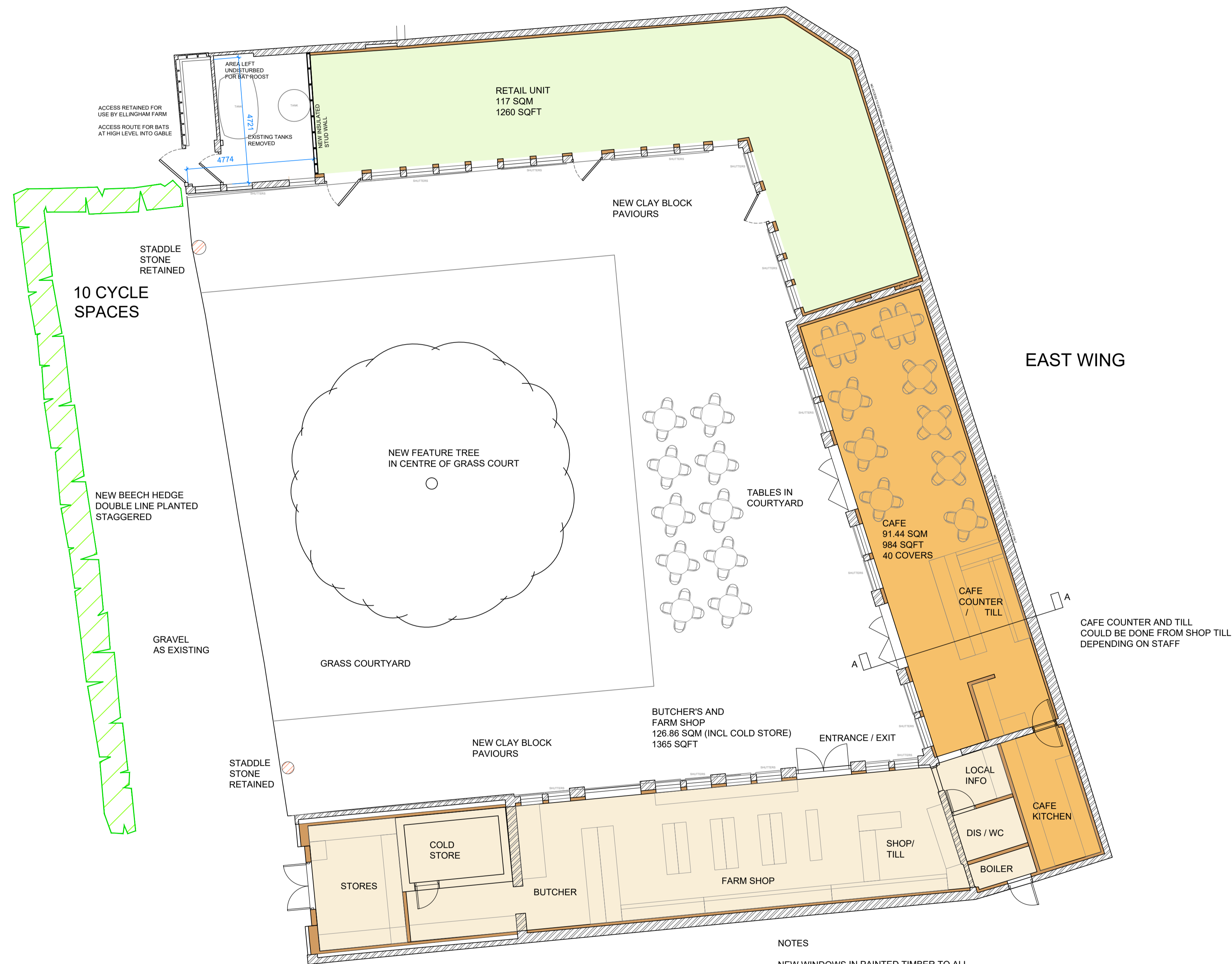


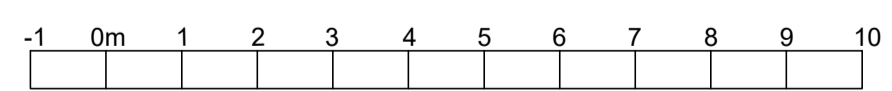
NORTH WING



SOUTH WING

NOTES

- NEW WINDOWS IN PAINTED TIMBER TO ALL EXISTING AND AMENDED APERTURES
- NEW GLAZED DOORS IN PAINTED TIMBER DOORS TO STORES AND BAT ZONE (BOTH GABLE ENDS) IN HORIZONTAL SHIPLAP TIMBER BOARDING
- NEW PAINTED TIMBER SHUTTERS
- NEW INTERNAL DRY LINING FOR INSULATION



B	21.03.23	Materials Notes Amended	CPL	CPL
A	08.12.22	Rev for Bat Preservation	CPL	CPL
Rev.	Date	Details	Drawn	Checked

Issued for: **PLANNING**

Project/Client:	Project No:
SOMERLEY ESTATE	2112
ELLINGHAM FARM COURT	Dwg No: Rev:
FARM SHOP	101 B
Scale:	1/100 @ A1
North:	
Drawing:	Proposed Plans
Drawn By: Date:	CPL 08.04.22
Checked By: Date:	CPL 08.04.22

**CPL ARCHITECTURE**

CHRIS LITTLEMORE BA(Hons) BArch MSc RIBA  
CHARTERED ARCHITECT